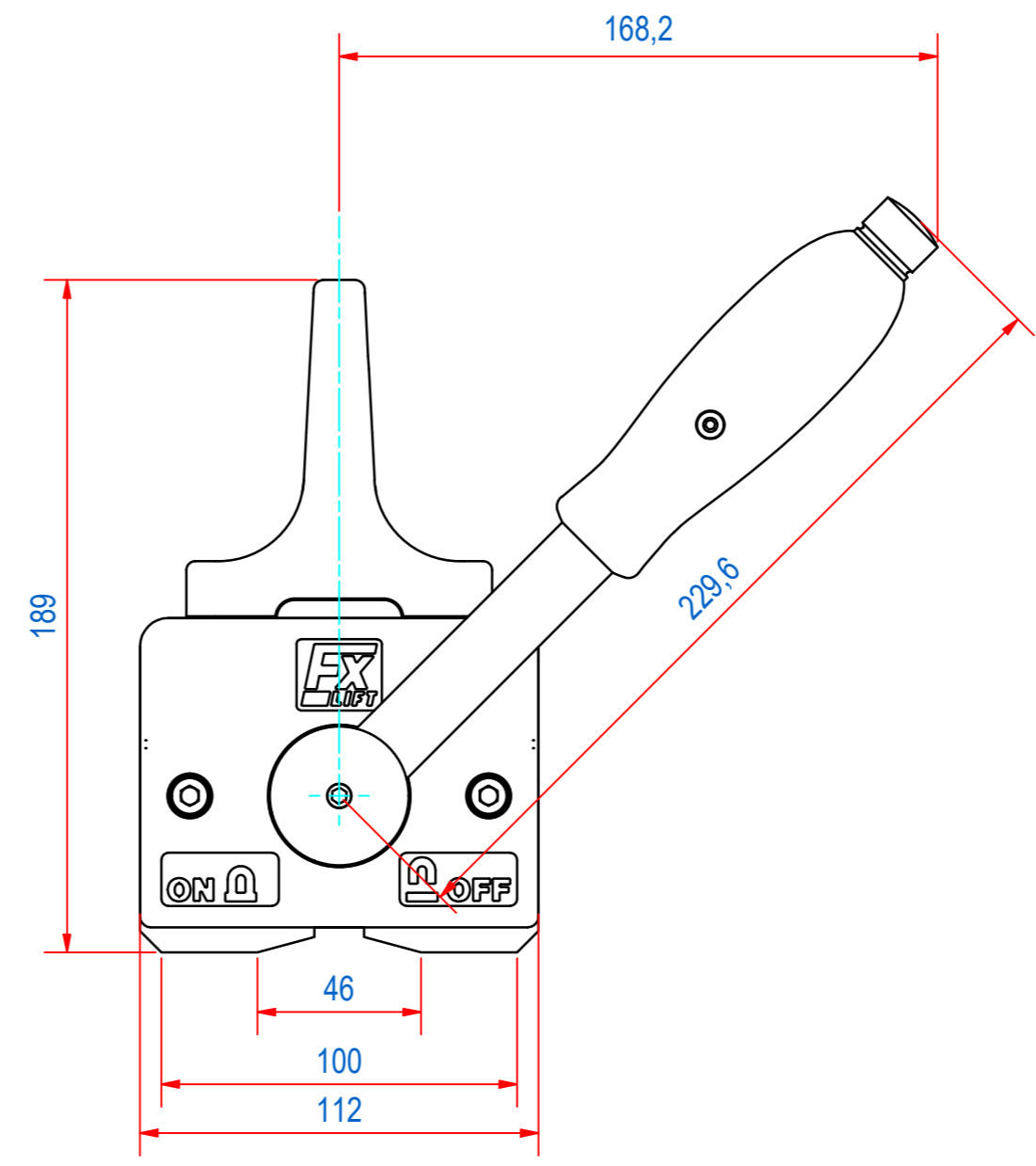
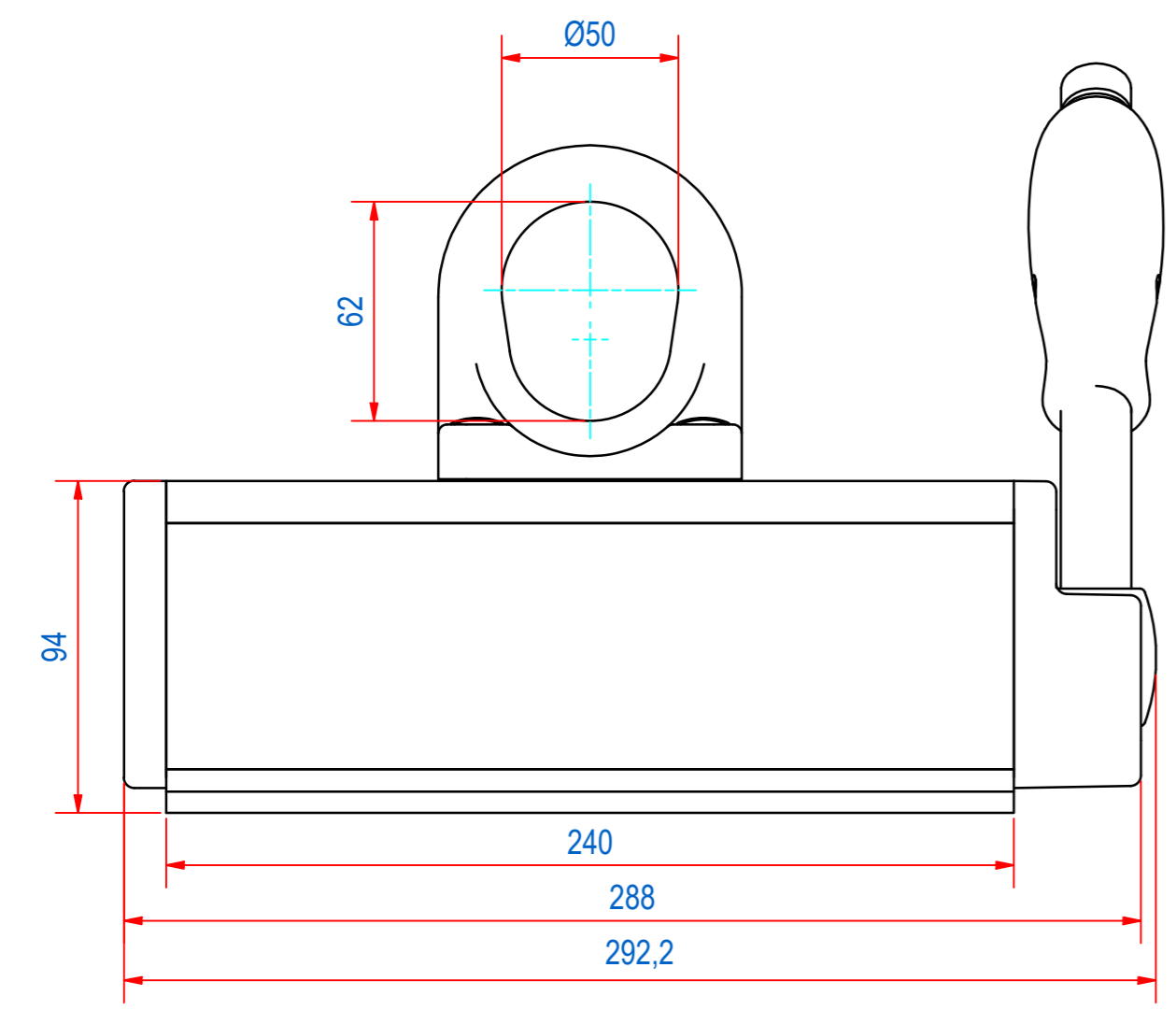
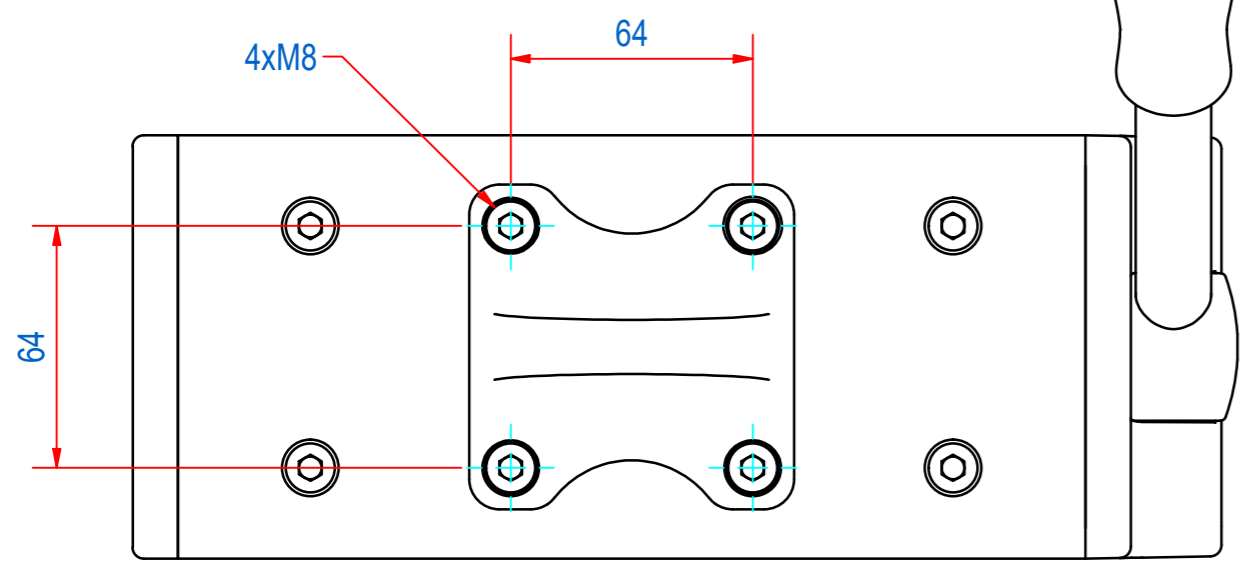
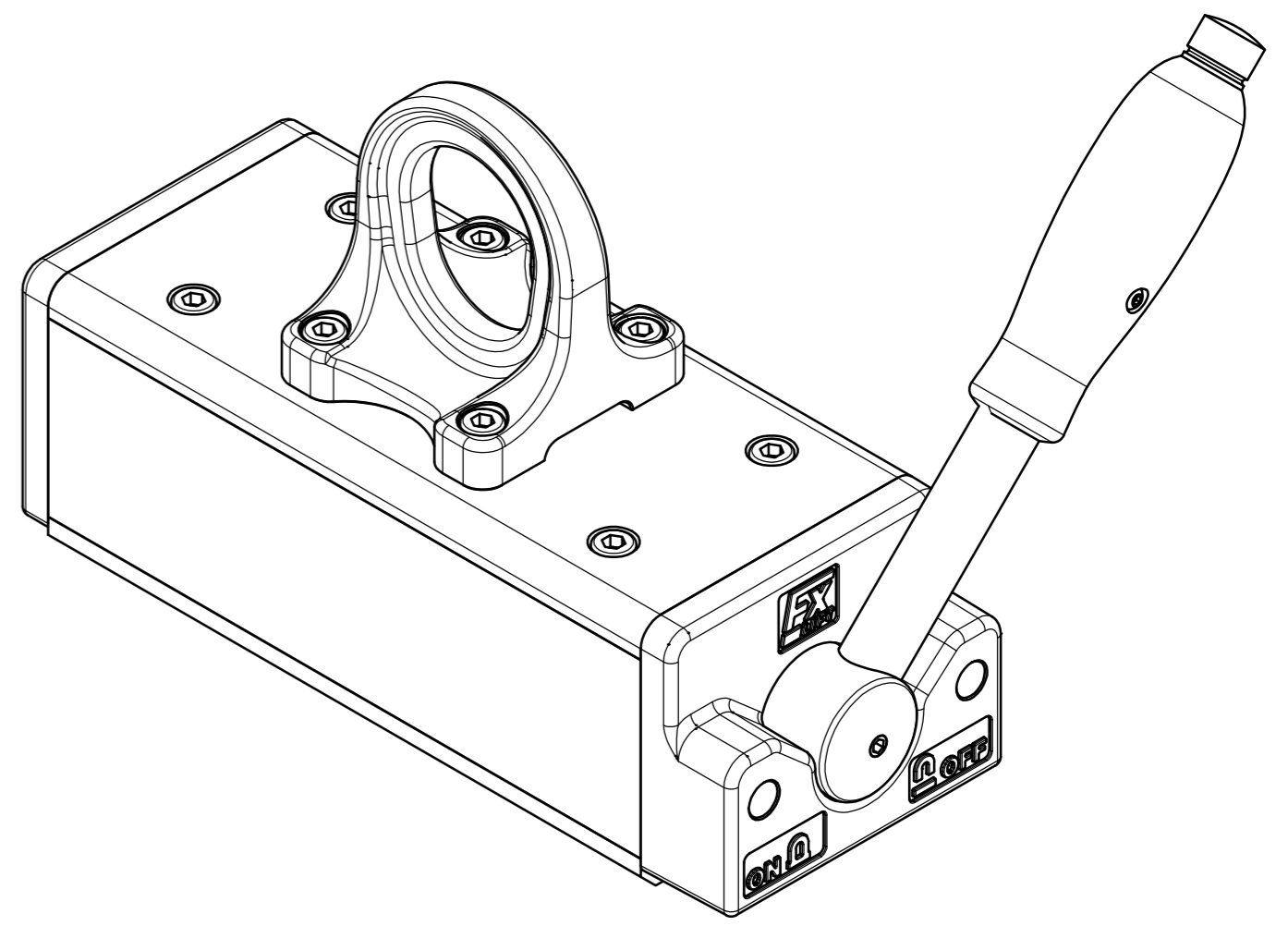


DOC.NR.	REV	DATE	BY	DESCRIPTION
E0161871	-	16-10-2024	EP	ORIGINAL DRAWING
E0161871	A	16-10-2024	EP	ADDED CORRECT WEIGHT



FX600	Air gap <0,2mm			Air gap 0,2- 0,3mm			Air gap 0,3- 0,6mm		
Material Thickness (mm)	Max. Load (kg)	Max. L (mm)	Max. B (mm)	Max. Load (kg)	Max. L (mm)	Max. B (mm)	Max. Load(kg)	Max. L (mm)	Max. B (mm)
>=6	150	1800	1500	120	1800	1250	100	1500	1250
>=10	300	2250	1500	250	2250	1250	210	2000	1250
>=15	500	2500	1500	440	2500	1250	350	2000	1250
>=20	600	3000	1500	520	3000	1250	440	2500	1250
Ø80-400	300	4000	-	250	3500	-	200	3000	-

RAW MAT.	Quantity	Material Number	Material Description	Length (mm)	Width (mm)
1					
Sheet:	A2		Extra info:		
Drawn:	EP		Weight (kg): 19		
Date:	13-10-2023		General tolerance: ISO 2768- mK		
Spare part:	False		Drawn according: ISO286; ISO1101; ISO2553		
Quick search:	FX-600		Status: Released		
Description:	HPL-RA-0600-112x288-094-FE		Customer reference number:		
			Document number: E0161871		Doc.Rev: A
			Part number: E0161871		Rev: A



© All rights reserved. Reproduction is not permitted without written permission of GOUDSMIT Magnetic Systems BV