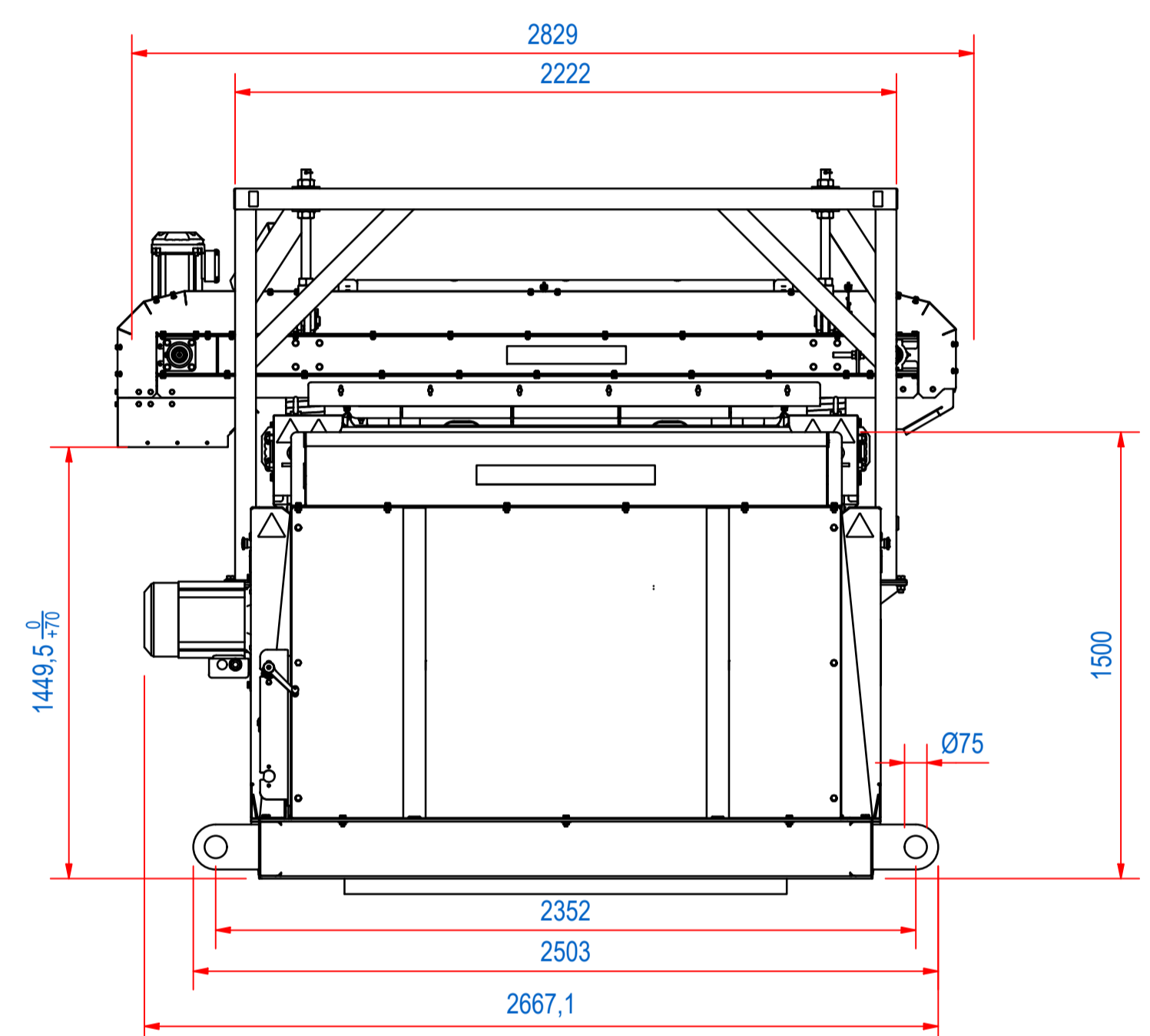
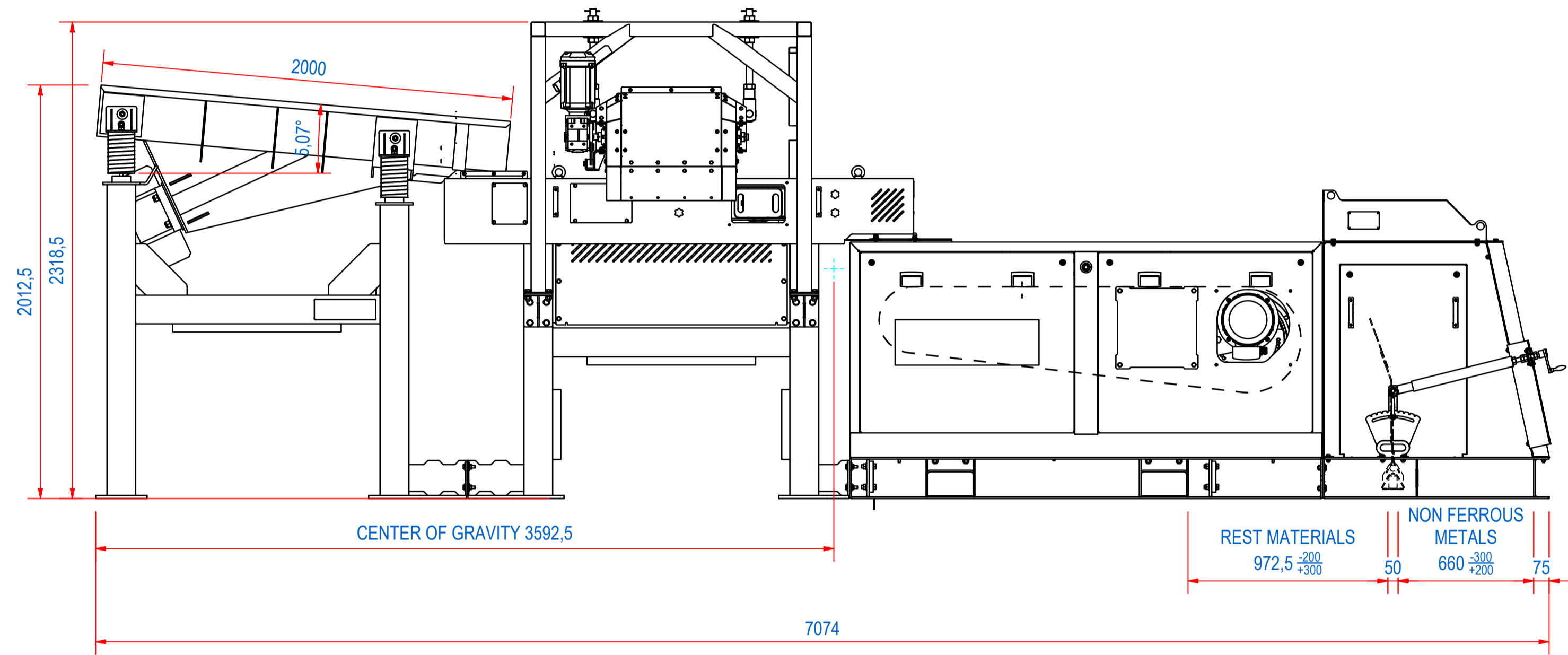
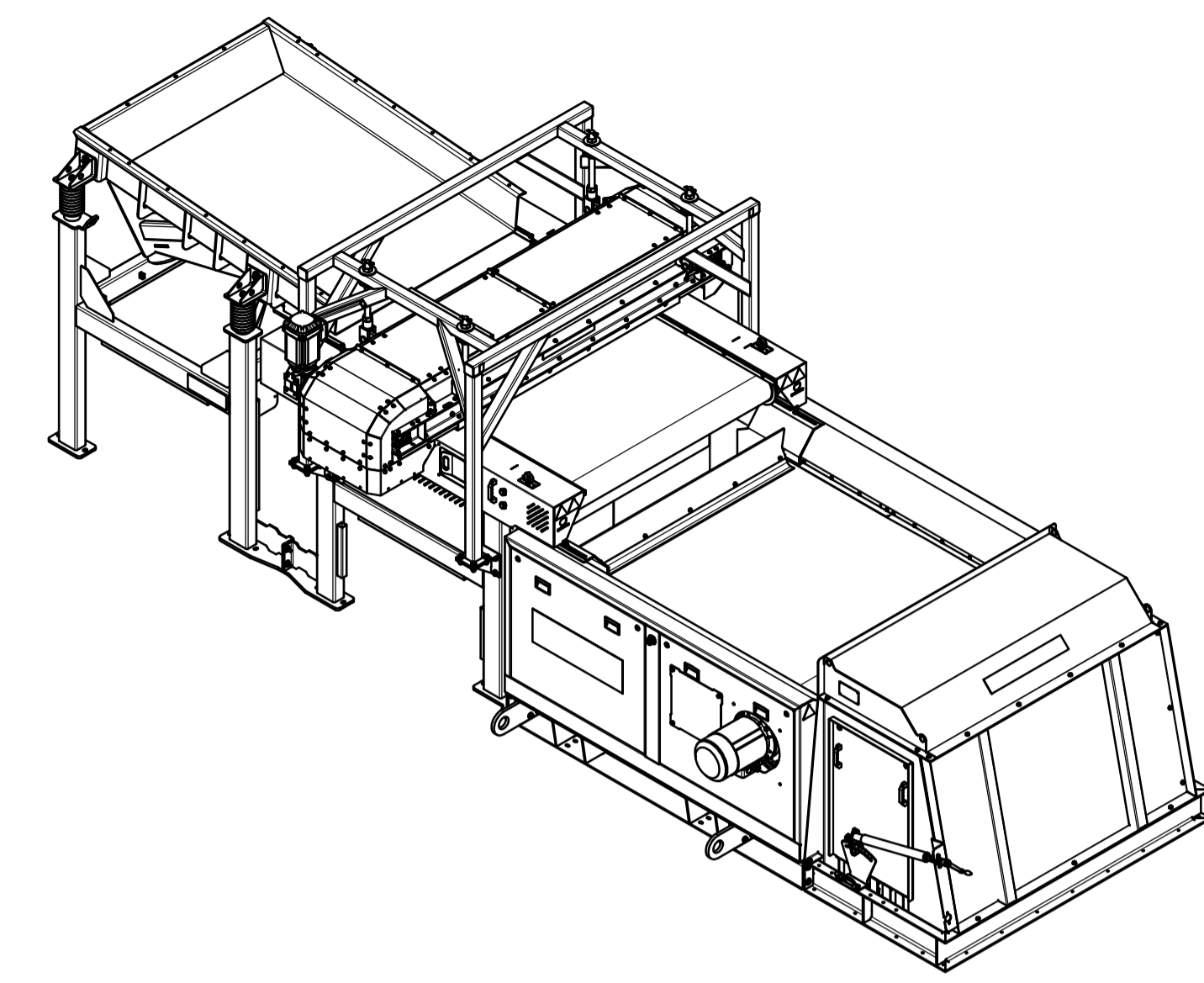
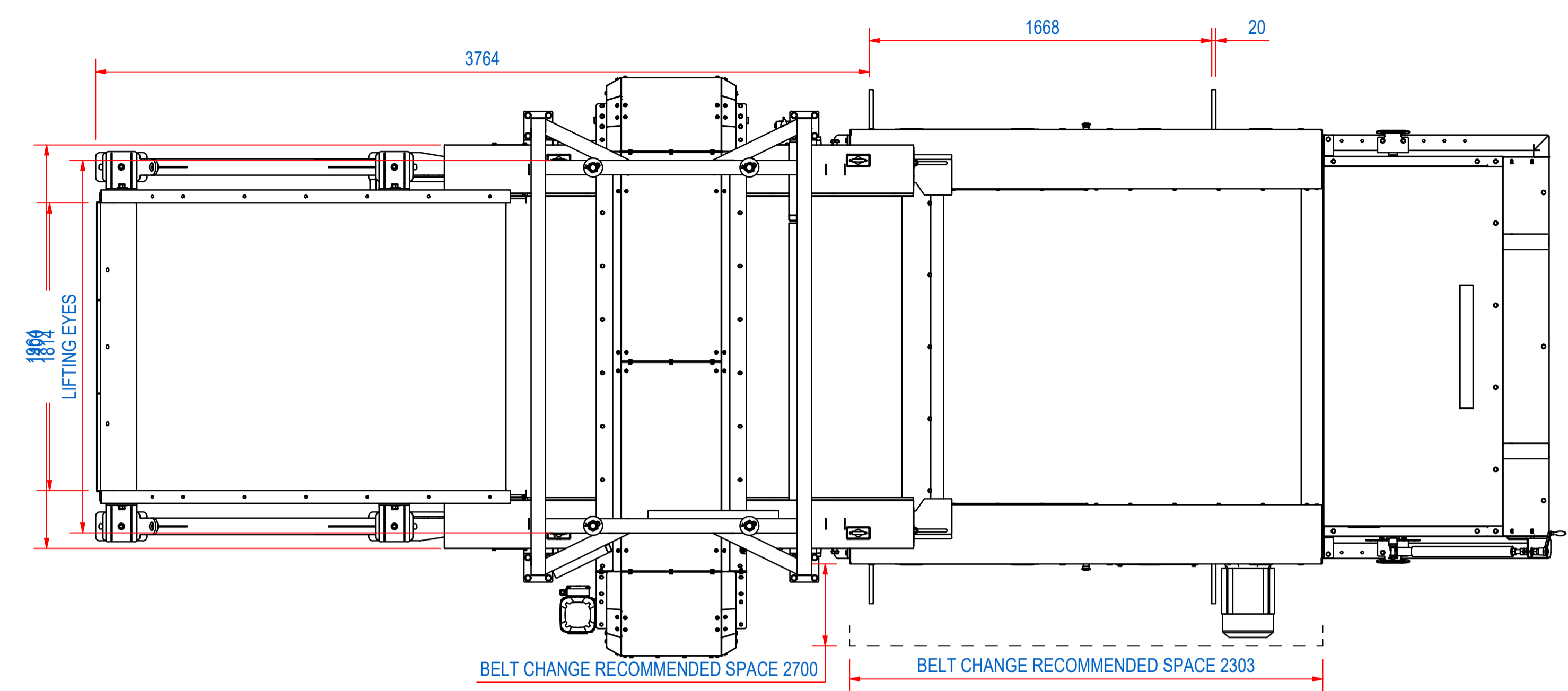
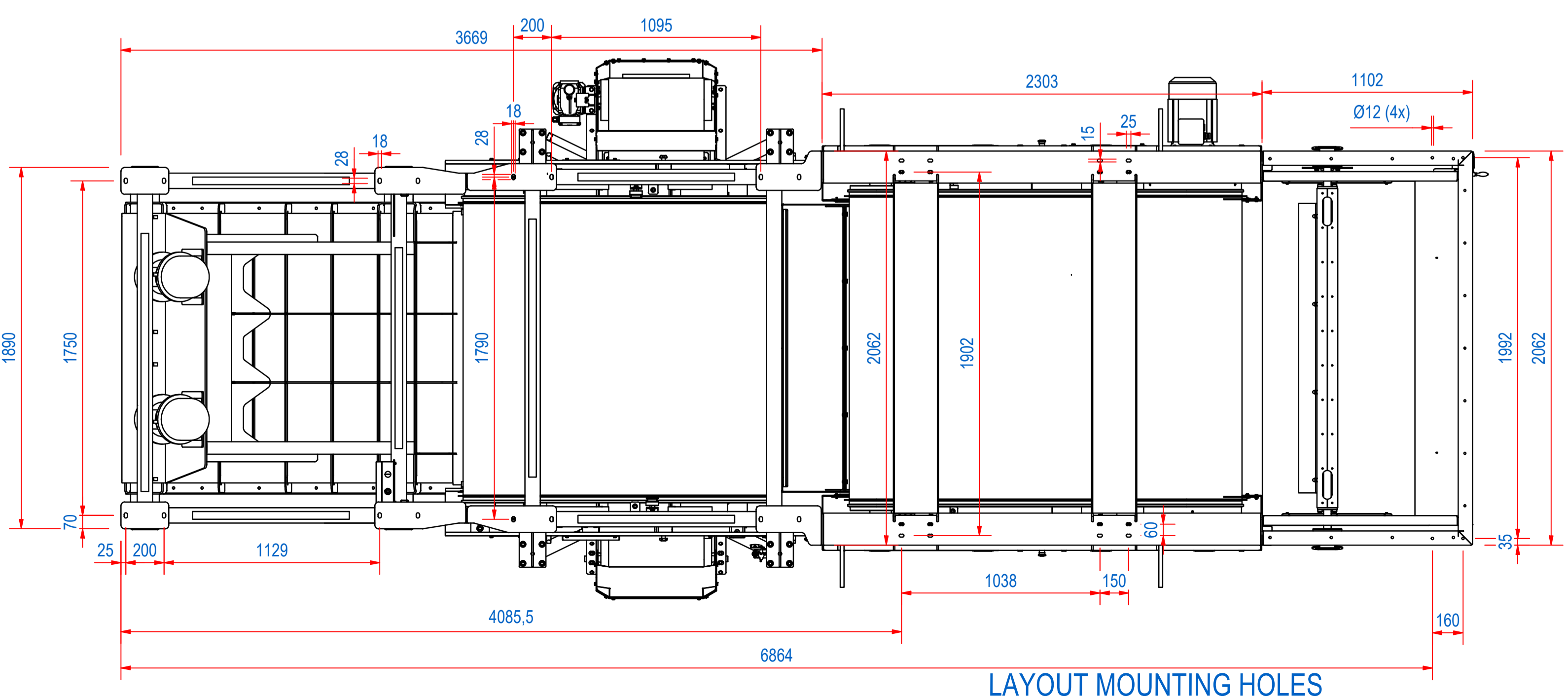


DOC.NR.	REV	DATE	BY	DESCRIPTION
E0163811	-	22-2-2024	TK	ORIGINAL DRAWING
E0163811	A	17-10-2024	TK	CHANGED FROM A 12P TO 22HI

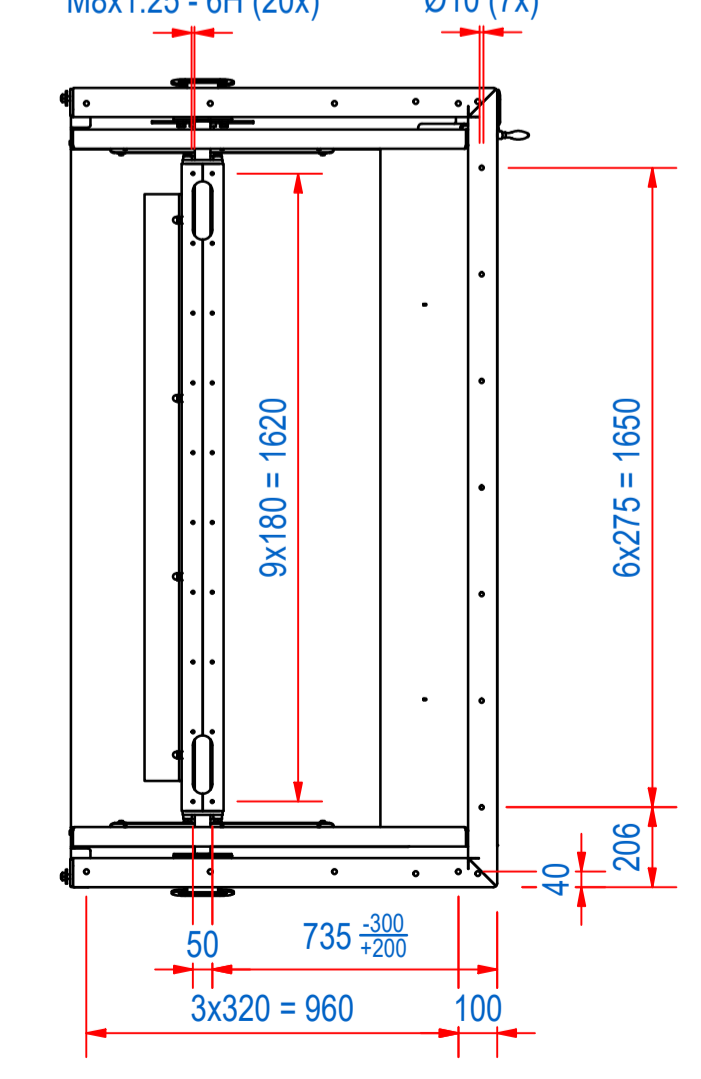


RECOMMENDED FREE SPACE AROUND THE MACHINE FOR INSPECTION IS 800 MM

Transportation Specification				
Main Module	Length	Width	Height	Mass
ECS Module	2303 mm	2667 mm	1248 mm	1985 kg
Bovenband Module	2829 mm	730 mm	553 mm	1177 kg
HG Feeder Module	2282 mm	2667 mm	1248 mm	1243 kg
Conveyor Feeder Module	2019 mm	1400 mm	2012 mm	864 kg
Separation Box	1102 mm	2107 mm	1500 mm	410 kg



LAYOUT MOUNTING HOLES FUNNEL



ELECTRICAL PROPERTIES
CURRENT: 32 A
POWER: 17.5 kVA

ITEM	QTY	PART NUMBER	DESCRIPTION	Dimensions
16	2	E0129382	STICKER ECS HOISTING	
15	1	E0098479	REC-DATA PLATE	
14	1	E0112456	REC-MR-15-E22HI	
12	2	E0120504	STICKER EDDYXPRT W700 H222 WHITE	
11	1	E0107821	REC-EF-15-X-R	
10	2	E0120519	STICKER GOUDSMIT MAG. W600 WHITE	
9	1	E0134050	REC-VE-G-N	
8	1	E0106804	REC-VB-15-VM20-05-N	
7	1	E0161919	REC-VF-08-MD	
6	1	E0075432	REC-SB-15-M-ST	
5	1	E0108037	REC-SA-S-R	
4	1	E0146627	REC-SP-15-FT	
3	1	E0160500	BOVENBAND MODULE 15	
2	1	E0148391	WELDING FRAME	
1	1	45.1800047	REC-EB-15-X-PU-30	

RAW MAT.	Quantity	Material Number	Material Description	Length (mm)	Width (mm)
1	1				

General tolerance: ISO 2768 - mK
Drawn according to: ISO286; ISO1101; ISO2553
Status: Released
Customer reference number:
Document number: E0163811 Doc.Rev: A
Part number: E0163811 Rev: A

Quick search: REC-15
Description: REC-15-22HI-O-VB-FTS-PU-N-R