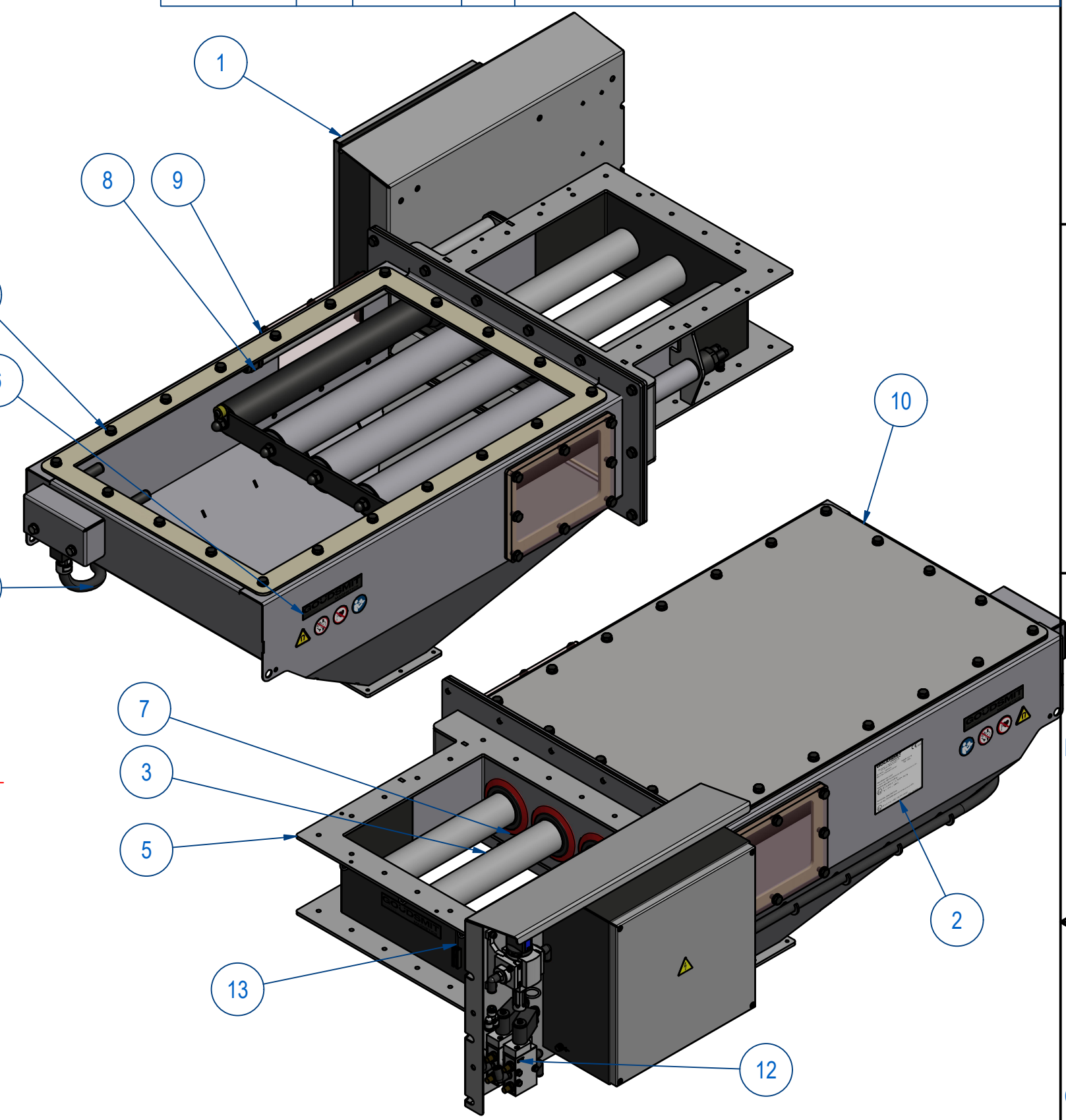
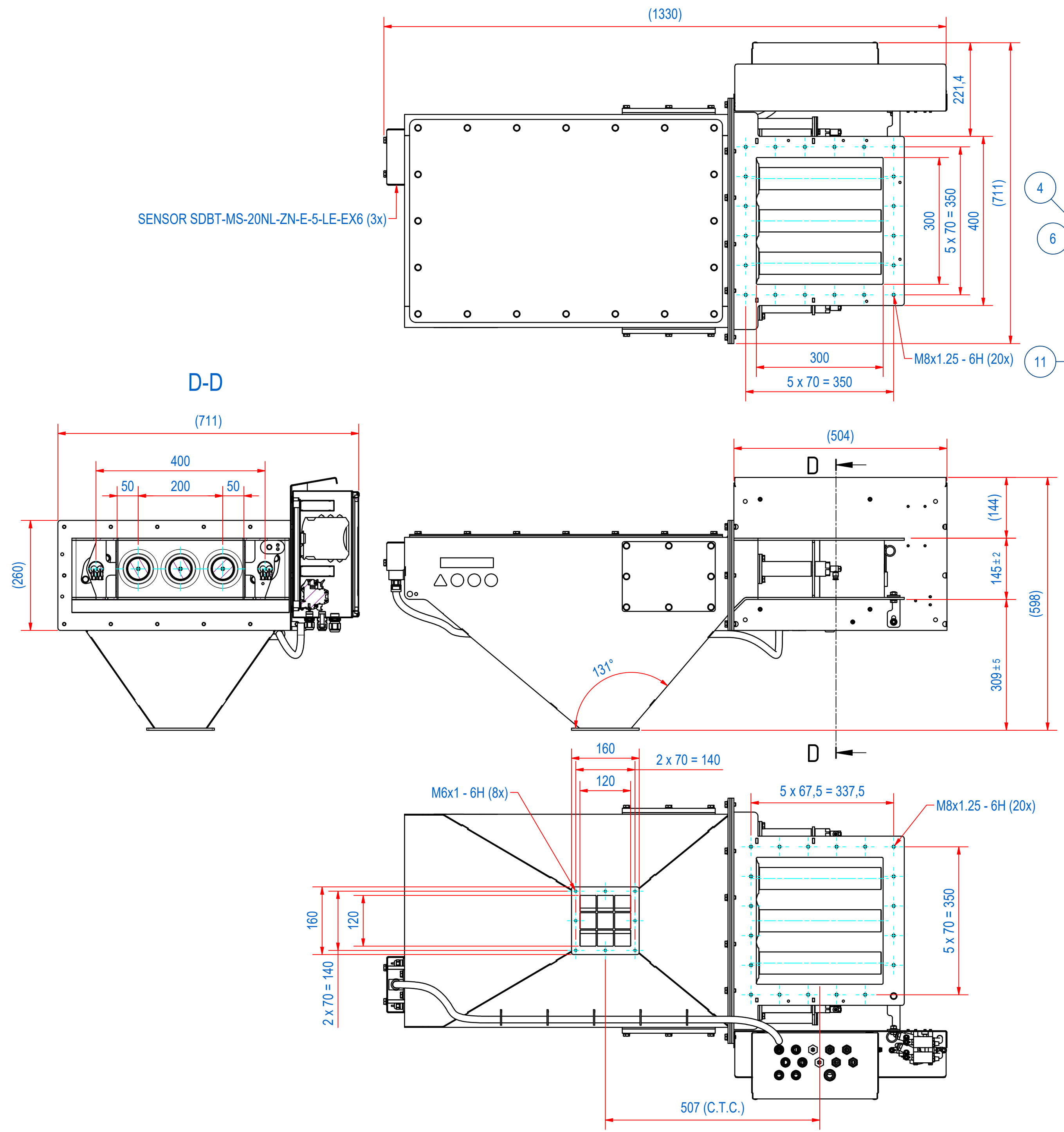


DOC.NR.	REV	DATE	BY	DESCRIPTION
E0164673	-	27-5-2024	LH	REFERENCE DRAWING E0078078
E0164673	A	10-10-2024	LH	PRODUCT KEY UPDATED

SENSOR SDBT-MS-20NL-ZN-E-5-LE-EX6 (3x)

D-D



NO PRODUCT FLOW DURING CLEANING CYCLES OF MAGNETS

THIS DRAWING CORRESPONDS WITH ATEX DRAWING E0141563 (MECHANICAL ASSEMBLY)

ITEM	QTY	PART NUMBER	DESCRIPTION	Dimensions
13	3	83.9900058	SENSOR SDBT-MS-20NL-ZN-E-5-LE-EX6	
12	1	E0105723	SECA PNEUMATIC DIAGRAM	
11	1	E0099706	FLEX. HOSE PA11 AD15.8 Ex L1100	
10	1	E0103607	SECA-3030-TOP COVER 316L	
9	2	E0104184	SECA-SIDE COVER GRIPHEN EC1935	
8	1	EIYR392001	CABLE GL HSK-M-MULTI-EXM20x1.5	
7	3	E0049709	SECE-S-SEAL Ø75 SIL RED EC1935	
6	1	E0103549	SECA-000-STICKERS	
5	1	E0099070	SECA-3030-HOUSE-B	
4	1	E0103503	SECA-3030-DISPOSAL HOUSING-S	
3	1	E0103537	SECA-S-3030-03V-ES MAGNET INSERT	
2	1	E0135057	SECA-TYPE PLATE ATEX Ex-X4-G1-G4-Y-Y4	
1	1	E0164668	SECA-000-PNEU-Ex CONTROL UNIT	

RAW MAT.	Quantity	Material Number	Material Description	Length (mm)	Width (mm)
1	1				

Sheet: A2	Extra info: CLEANFLOW MAGNET STATIC AUTOMATIC CLEANING Ex - ATEX	General tolerance: ISO 2768 - mK
Drawn: LH	Weight (kg): 105	Drawn according: ISO286; ISO1101; ISO2553
Date: 26-3-2024	Source: MC-C	Status: Released
Spare part: False	Quick search: SECA-3030	Customer reference number:
Description: SECA-3030-03V-ES-F1m-B-P-ST-B-SR-B-S-C-Ex		Document number: E0164673
		Doc.Rev: A
		Part number: E0164673
		Rev: A