

**PRODUCT KEY**  
FINISHING: SURFACE TREATMENT & WELDS

General code for recycling & handling products:

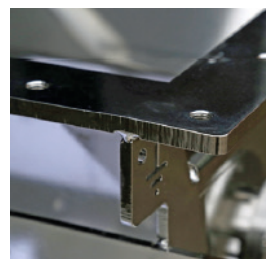
**FS** (Finishing Specific)

- Welds according to drawing
- Surface treatments according to specifications

	Preference
	Optional
	Optional: expensive - long delivery
	Improper choice
	Hygienic version

Welded shut  
Product chute: continuously welded  
Outside the product chute: intermittent welding  
Product chute: continuously welded  
Outside the product chute: welded shut  
Product chute: continuously welded  
Outside the product chute: continuously welded  
All welds: continuously welded  
Product chute: continuously welded  
Welds including finishing  
Outside the product chute: continuously welded  
All welds: continuously welded  
Welds inside product chute and finishing  
Special weld instruction

	WB	WE	WH	Wm	WM	Wt	WT	WZ
Grit blasted Ra 3 (m (inside/outside))	<b>S1</b> F1B	F1E	F1H	F1m	F1M	F1t	F1T	F1Z
Pickled and passivated Ra 0,8 (m (inside/outside, excluding welds / end faces))	<b>S3</b> F3B	F3E	F3H	F3m	F3M	F3t	F3T	F3Z
Polished with vibratory finishing Ra 0,4 (m (inside/outside, excluding welds / end faces))	<b>S5</b> F5B	F5E	F5H	F5m	F5M	F5t	F5T	F5Z
Electrolytic polished Ra 0,6 (m (inside/outside, excluding welds / end faces))	<b>S7</b> F7B	F7E	F7H	F7m	F7M	F7t	F7T	F7Z
Hygienic wet blasted Ra 0,6 (m (inside/outside, excluding welds / end faces))	<b>S8</b> F8B	F8E	F8H	F8m	F8M	F8t	F8T	F8Z
Manually polished Ra 0,4 (m (inside/outside, excluding welds / end faces outside product chute))	<b>S9</b> F9B	F9E	F9H	F9m	F9M	F9t	F9T	F9Z
Special treatment/coating – To be described in article specifications	<b>SZ</b> FZB	FZE	FZH	FZm	FZM	FZt	FZT	FZZ



Excluding welds and end faces outside the product chute, means:

- on end faces some laser beam markings will remain
- on welds some weld pool markings will remain