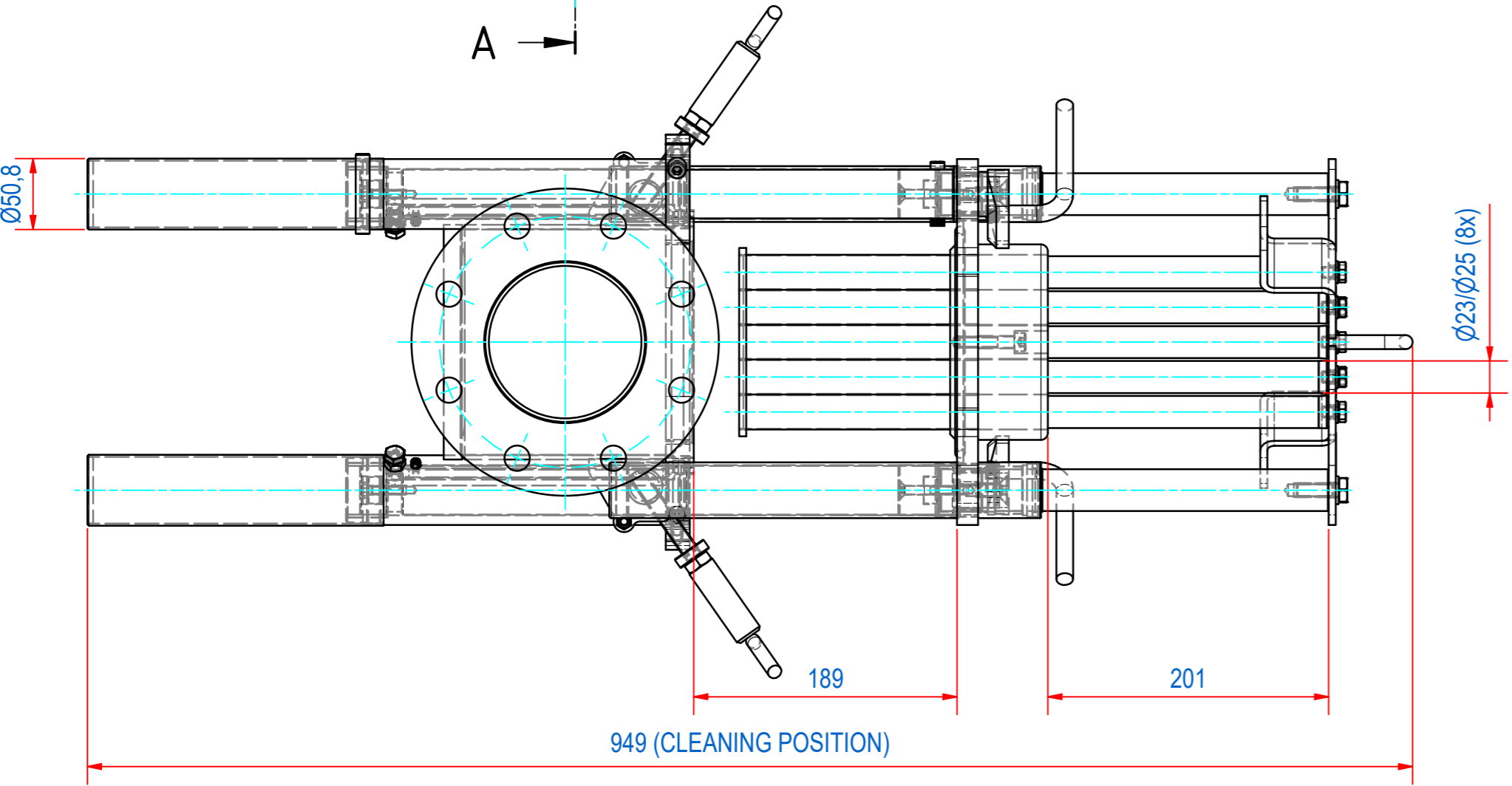
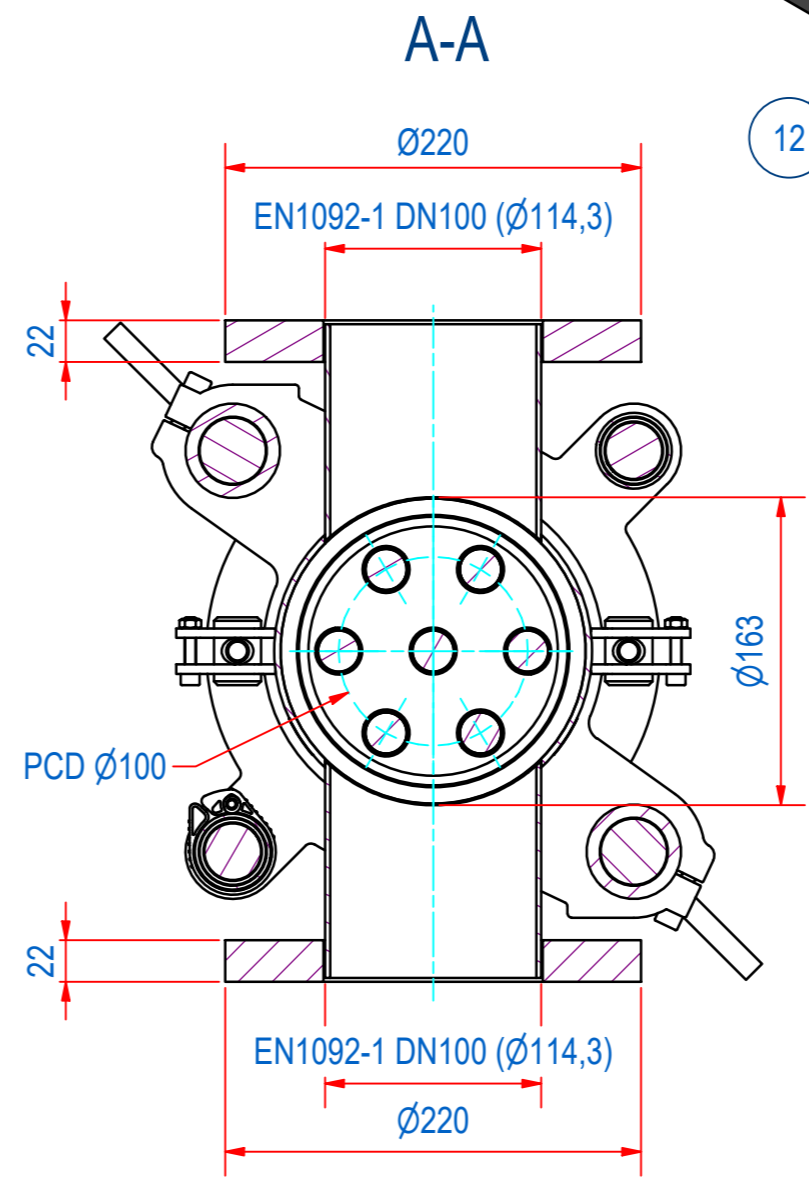
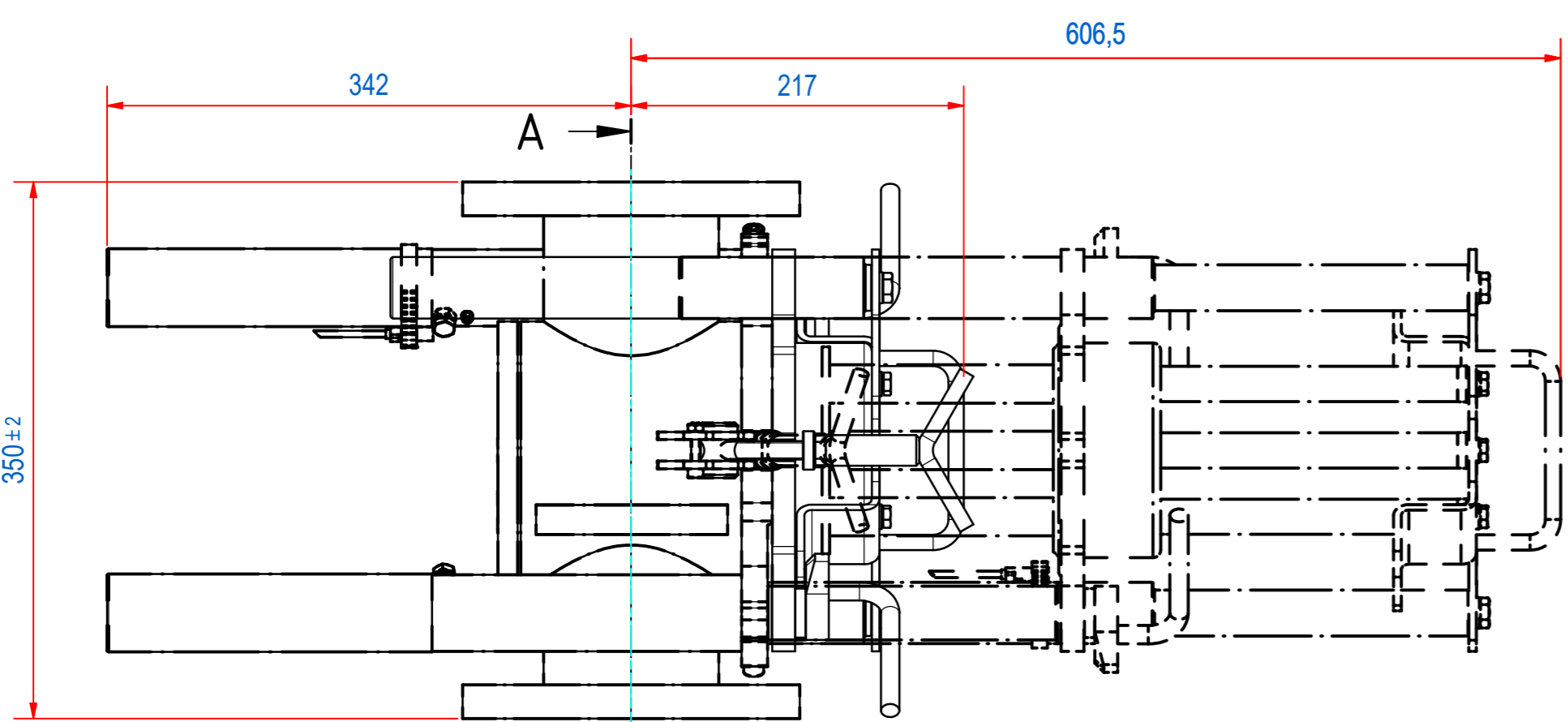
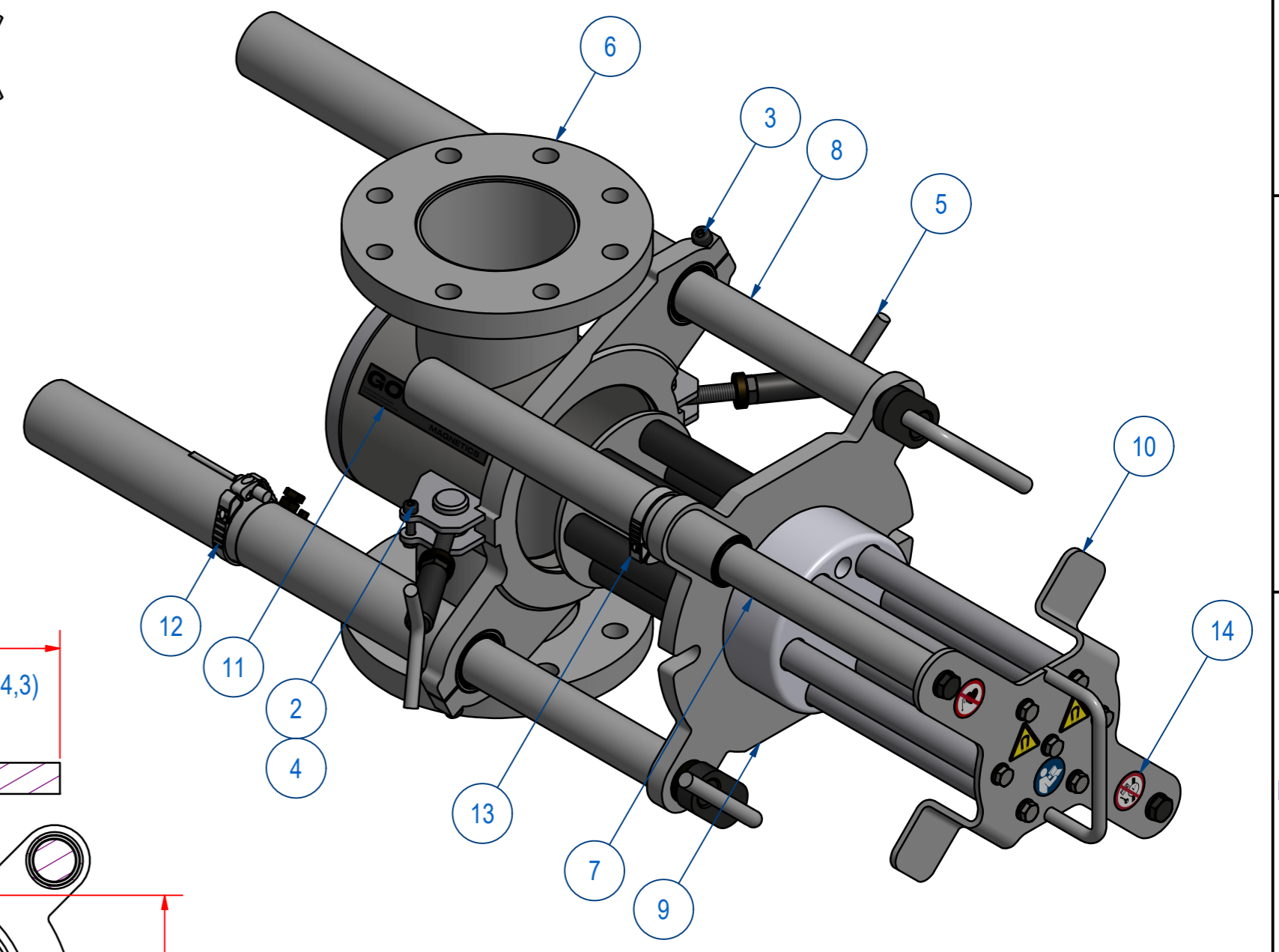
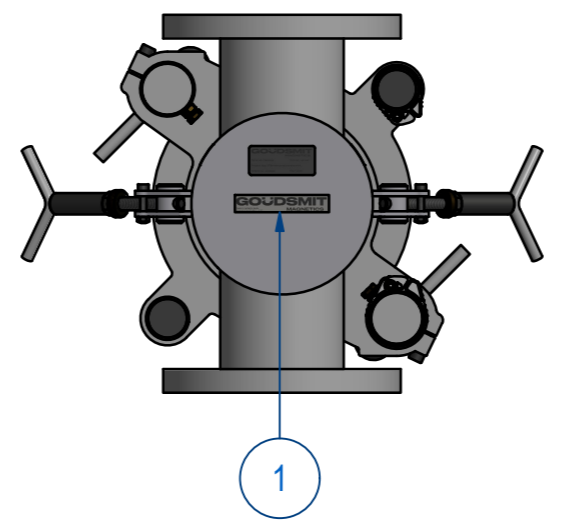
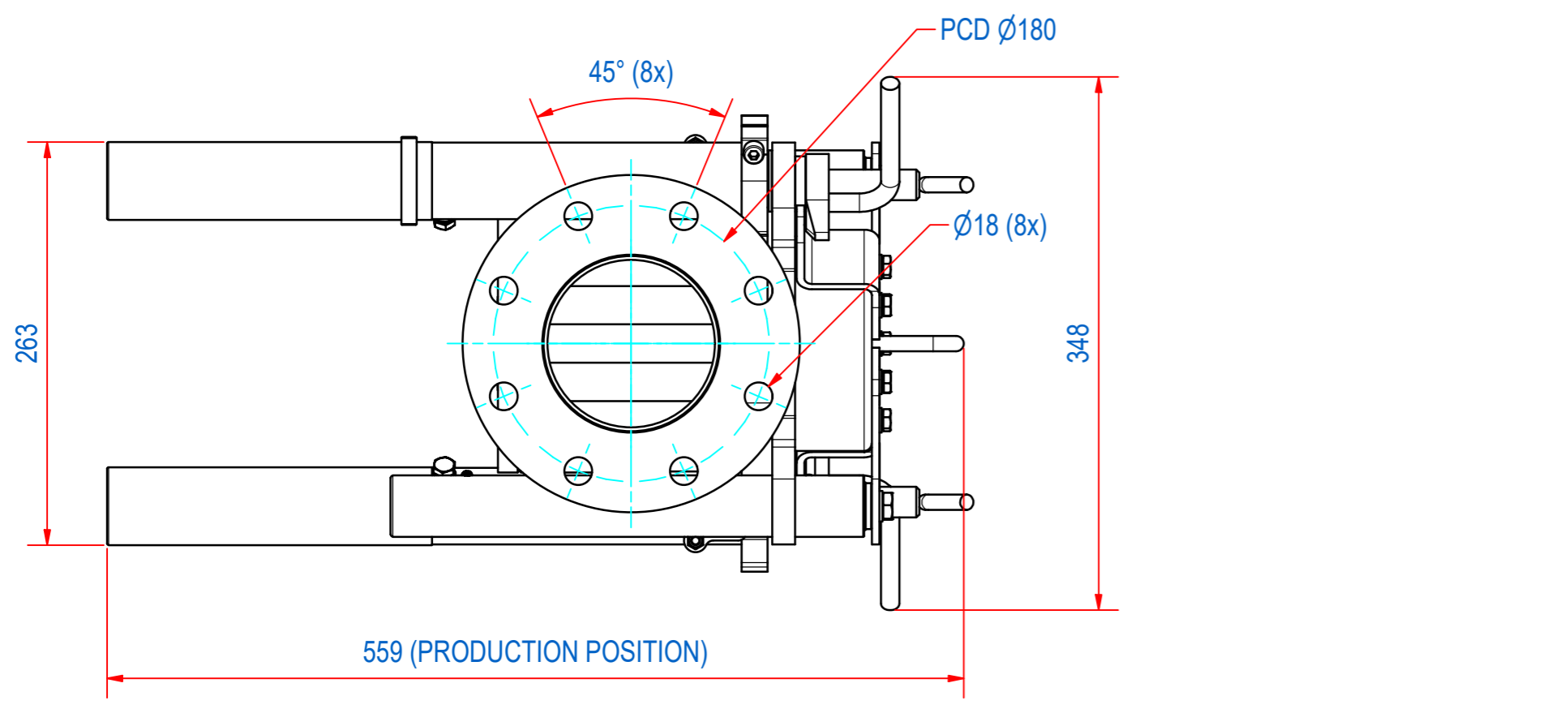


REV	DATE	BY	DESCRIPTION
A	10-10-2013	AvD	CLAMPING BLOCK (IN ITEM 8) AND MAGNET MOUNTS (IN ITEM 3) CHANGED
B	17-10-2018	CR	TYPE PLATE AND WARNING STICKERS ADDED
C	22-8-2024	CR	ADDED WARNING STICKERS AND SENSOR ASSY



ITEM	QTY	PART NUMBER	DESCRIPTION	Dimensions
14	1	E0167247	STICKER ASSY SSFNG	
13	1	E0167203	SENSOR MOUNTING ASSY	
12	1	E0167200	SENSOR MOUNTING ASSY	
11	2	E0086456	STICKER SFN-080 GSM	
10	1	A140149	FS100 MAGNET PLATE ASSY	
9	1	A140148	FS100 EXTRACTOR ASSY	
8	2	A120942	FS100 GUIDING ROD D35	
7	2	A120941	FS100 MAGNET PLATE ROD	
6	1	A120930	FS100 FILTER POT MILLING	
5	2	A120739	SSFNG-000-TOGGLE M12	
4	2	60.0300006	NUT, HEX M6 - A4	M6
3	2	51.0308030	SCREW, HEX SH M8x30-A4	M8 x 30
2	2	51.0306030	SCREW, HEX SH M6x30-A4	M6 x 30
1	1	1215.00406	NAME PLATE GOUDSMIT 87x16	

RAW MAT.	Quantity	Material Number	Material Description	Length (mm)	Width (mm)
1	1				

Sheet: <b>A2</b>	Extra info:	General tolerance: <b>ISO 2768 - mK</b>
Drawn: <b>AvD</b>	Weight (kg): <b>49</b>	Drawn according: <b>ISO286; ISO1101; ISO2553</b>
Date: <b>23-7-2012</b>		Status: <b>Standard</b>
Spare part: <b>False</b>	Source:	Customer reference number:
Quick search: <b>FSN100</b>		
Description: <b>SSFNG-100-IF-07E-HT-F1M-S-B-B</b>	Document number: <b>SSFNG10038</b>	Doc.Rev: <b>C</b>
	Part number: <b>SSFNG10038</b>	Rev: <b>C</b>