

GOUDSMIT

MAGNETICS

Customer name: -
Customer number: -
Country: The Netherlands
Language: English

Project Name: -
Project Number: -
Product: SWITCH BOX CR FOR SAFETY SWITCH
Item number: A240048
ATEX: ATEX II 2D Ex tb IIIC T80°C Db

Designer: MV	Supply Voltage: 400 VAC
Design date: 11-12-2017	Nominal Power: 0,37 kW
Revision number: H	Max. supply Current: 2,5 A
Status: Released	Control Voltage: 230 VAC

Total pages: 011

Prev. sheet:

Next Sheet: 002

Designer: MV
Design date: 11-12-2017
Rev. nr.: H
Status: Released

Project name : -
Project number : -
Customer: -
Customer number: -



Product: SWITCH BOX CR FOR SAFETY SWITCH
Item number: A240048
Doc. number: A240048_Page-001.dwg

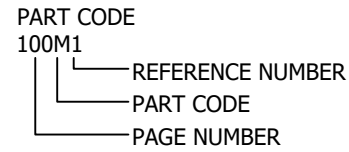
Drawing descr.: Front page

Sheet: 001
Inst.:
Loc.:

General specifications

PAGE NUMBERING	
1	Front page
2	Project specifications
10	Drawing list
100	Main circuit
150	Power supplies
200	Control circuit
300	-
400	PLC overview
500	PLC I/O
600	-
700	-
800	Spare connections
900	Bill of material
910	Components list
950	Terminal plan

TERMINAL NUMBERING	
X0	Main supply
X1	Main power
X2	Control voltage 230VAC
X3	Control voltage 24Vac
X4	Control voltage 24Vdc
X5	Analog signals
X6	External supply
X7	EEx i
X8	?
X9	?

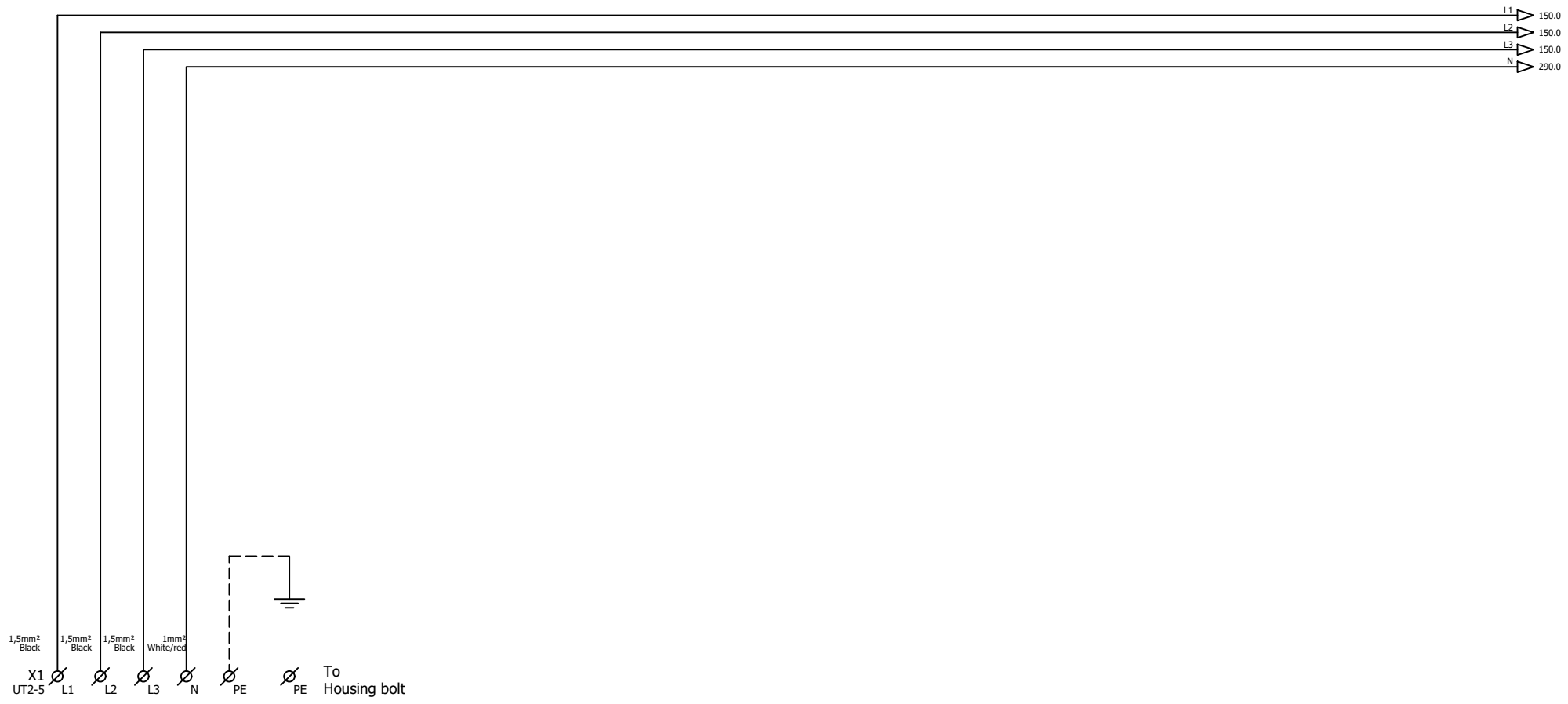


COLOR CODE INTERNAL WIRING				
Main current 400/230V	Phase	Black	>=	1.5mm ²
	Neutral	Lightblue	>=	1.5mm ²
	Earth	Yellow/Green	>=	1.5mm ²
Control voltage 230Vac	Phase	Red	>=	..mm ²
	Switch wire	Red	>=	..mm ²
	Neutral	Red/White	>=	..mm ²
Control voltage 24Vac	Phase (L)	Yellow	>=	..mm ²
	Switch wire	Yellow	>=	..mm ²
	Neutral (N)	Yellow	>=	..mm ²
Control voltage 24Vdc	Phase (+)	Darkblue	>=	..mm ²
	Switch wire	Darkblue	>=	..mm ²
	Neutral (-)	Darkblue/White	>=	..mm ²
Measurement		Grey	>=	..mm ²
External suply (Potential free contacts)		Orange	>=	..mm ²
EEx i		Blue	>=	..mm ²

Drawing list

Installation	Location	Page	Description 1	Description 2	Description 3
		001	Front page		
		002	Project specification		
		010	Drawing list		
		100	Main Switch		
		110	Power supplies		
		800	Spare connections		
		900	Bill of material		
		910	Components list		
		950	Terminal plan		
		990	Text plate		





Power Supply
 3x400V+N 50/60Hz
 Fuse max. 16A

Designer: MV
Design date: 11-12-2017
Rev. nr.: H
Status: Released

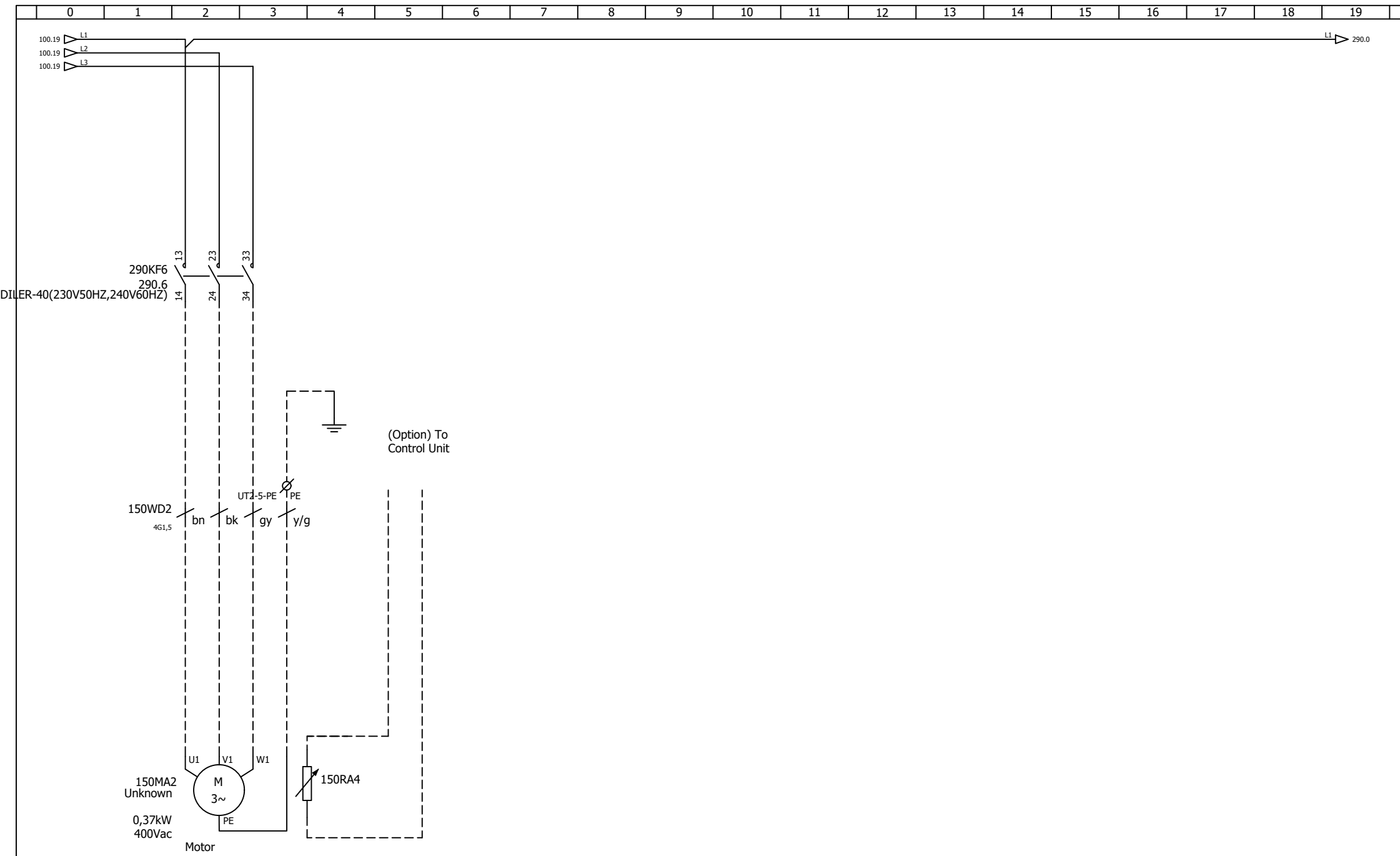
Project name : -
Project number : -
Customer: -
Customer number: -



Product: SWITCH BOX CR FOR SAFETY SWITCH
Item number: A240048
Doc. number: A240048_Page-100.dwg

Drawing descr.: Main Switch

Sheet: 100
Inst.:
Loc.:



Prev. sheet: 100

Next Sheet: 290

Designer: MV
Design date: 11-12-2017
Rev. nr.: H
Status: Released

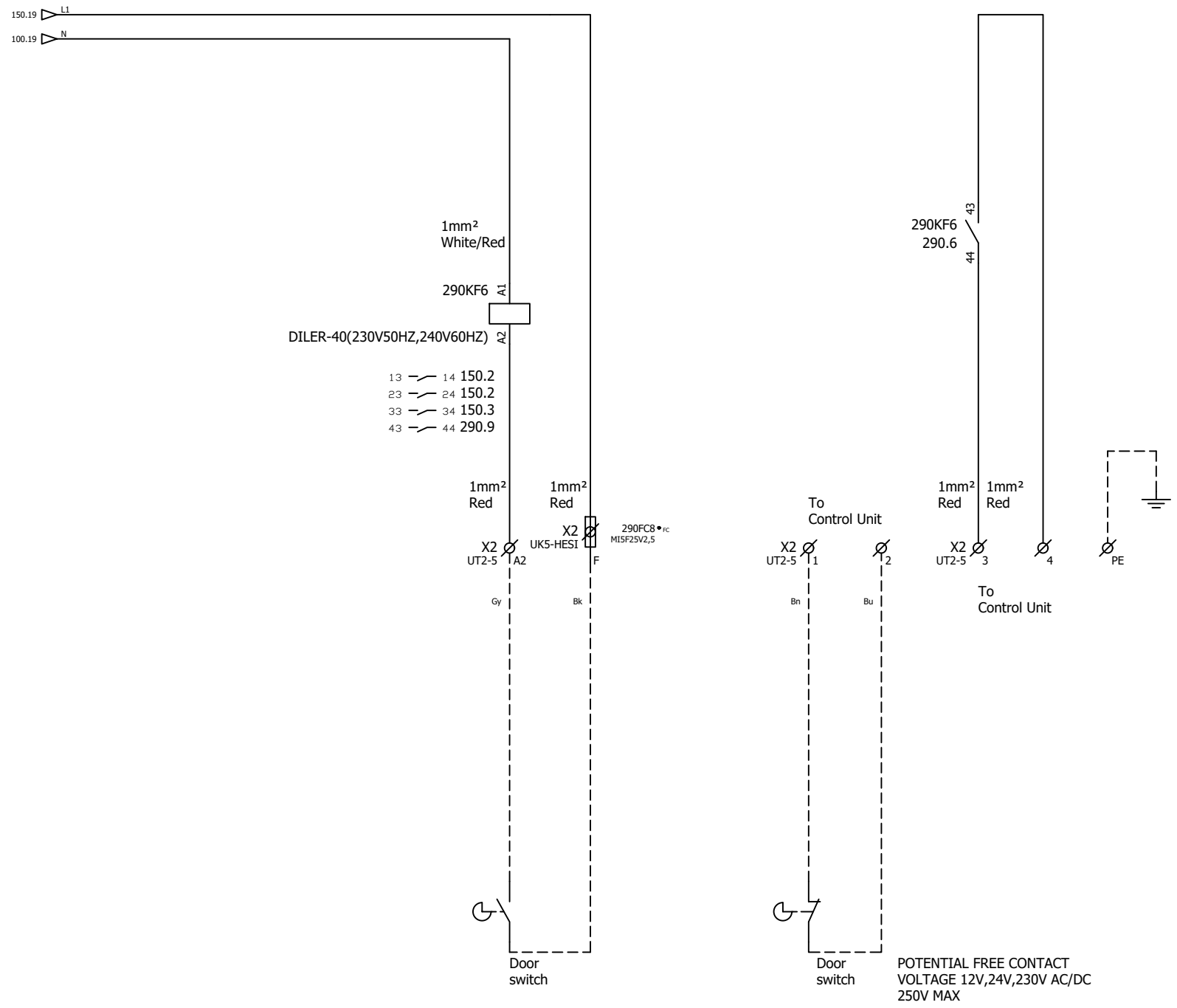
Project name : -
Project number : -
Customer: -
Customer number: -



Product: SWITCH BOX CR FOR SAFETY SWITCH
Item number: A240048
Doc. number: A240048_Page-150.dwg

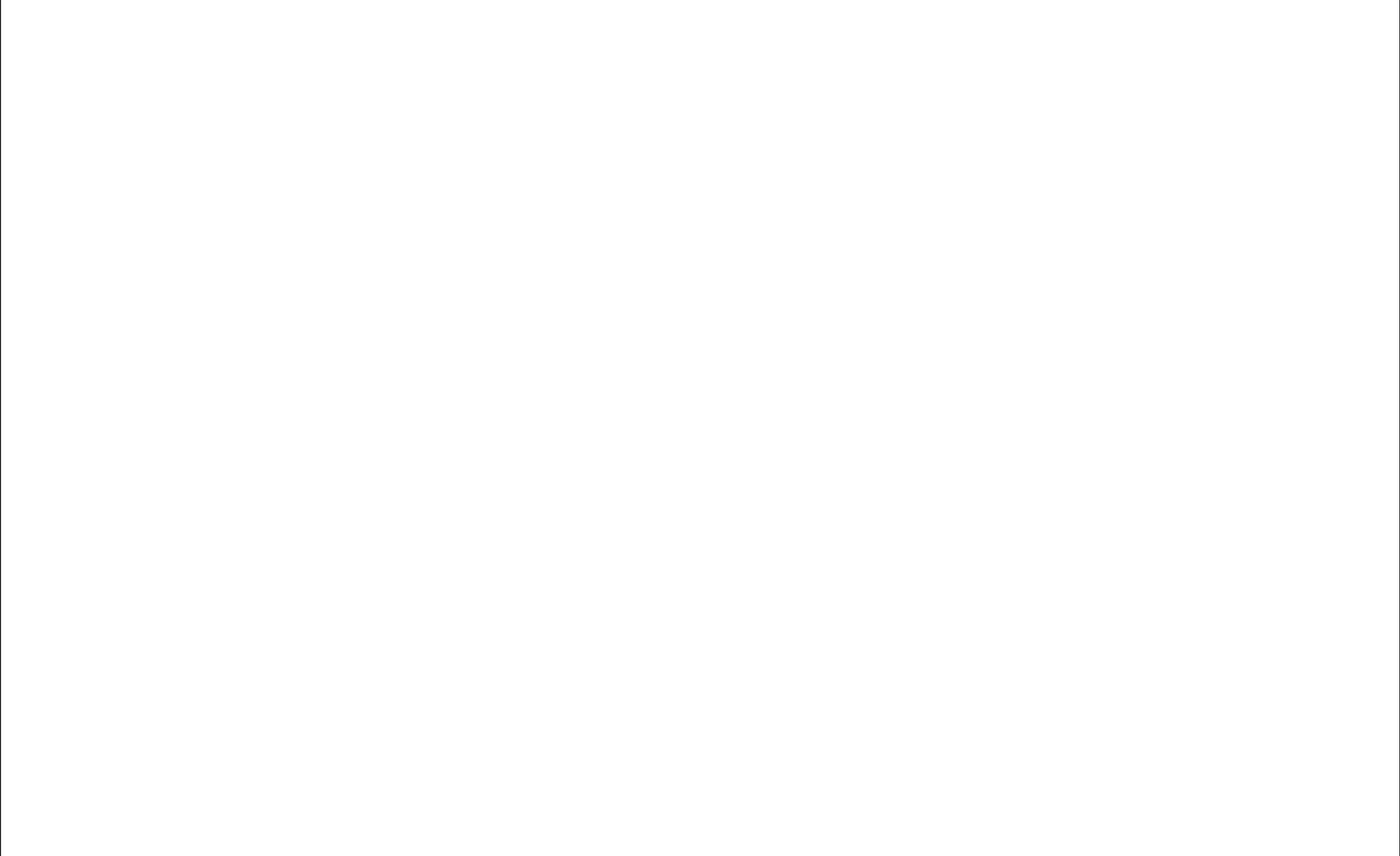
Drawing descr.: Main circuit


Sheet: 150
Inst.:
Loc.:



POTENTIAL FREE CONTACT
VOLTAGE 12V,24V,230V AC/DC
250V MAX

0	1	2	3	4	5	6	7	8	9	10	11	12	13	14	15	16	17	18	19
---	---	---	---	---	---	---	---	---	---	----	----	----	----	----	----	----	----	----	----



Prevl. sheet: 290		Next Sheet: 900			
Designer: MV Design date: 11-12-2017 Rev. nr.: H Status: Released	Project name : - Project number : - Customer: - Customer number: -		Product: SWITCH BOX CR FOR SAFETY SWITCH Item number: A240048 Doc. number: A240048_Page-800.dwg	Drawing descr.: Spare connections	Sheet: 800 Inst.: Loc.:

Bill of Material

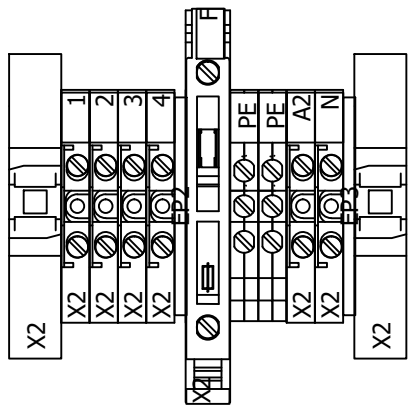
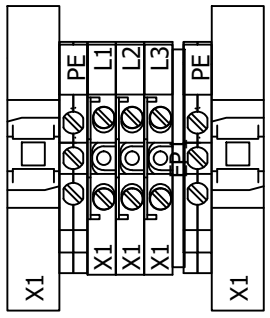
#	Item number	Manufacturer	Product Code	Custom code	Description
1	Unshielded 4G1,5	Default	UNSHIELDED 4G1,5	UNSHIELDED 4G1,5	UNSHIELDED 4G1,5
1	E0078896	EATON	051759	DILER-40(230V50HZ,240V60HZ)	4NO, AC CURRENT
1	EIHF620204	FERRAZ	Q215110Q	MISF25V2,5	FAST ACTING 5X20mm 2,5A
4	EI0M100002	PHOENIX	3022218	CLIPFIX 35	END CLAMB FOR 35MM DIN RAIL, CLIPFIX 35
3	EI0M040000	PHOENIX	3047028	D-UT 2-5-10	END COVER FOR UT 2,5-10 TERMINALS
1	EI0J010002	PHOENIX	3004100	UK5-HESI	FUSE HOLDER 5 X 20-25-30MM
9	EI0J010010	PHOENIX	3044076	UT2-5	1 LEVEL - SCREW 0.14 - 4mm²
4	EI0J310002	PHOENIX	3044092	UT2-5-PE	1 LEVEL - SCREW, GROUND, 0.14 - 4mm²
1	E0078679	_Unknown	X	SEE PAGE 990 FOR DETAILS	SEE E-DWG PAGE 990 FOR DETAILS
2	E0078659	_Unknown	?	UNKNOWN	FOR INVENTOR / ACADE TREE VALIDATION

Components list

Component code	Item number	Manufacturer	Product Code	Custom code	Description
150MA2	E0078659	_UNKNOWN	?	UNKNOWN	UNKNOWN UNKNOWN _UNKNOWN
150RA4	E0078659	_UNKNOWN	?	UNKNOWN	UNKNOWN UNKNOWN _UNKNOWN
150WD2	UNSHIELDED 4G1,5	DEFAULT	UNSHIELDED 4G1,5	UNSHIELDED 4G1,5	CABLE UNSHIELDED 4G1,5 DEFAULT
290FC8	EIHF620204	FERRAZ	Q215110Q	MI5F25V2,5	FUSE MI5F25V2,5 FERRAZ
290KF6	E0078896	EATON	051759	DILER-40(230V50HZ,240V60HZ)	CONTACTOR DILER-40(230V50HZ,240V60HZ) EATON
990TEXTPLATE2	E0078679	_UNKNOWN	X	SEE PAGE 990 FOR DETAILS	TEXT PLATE SEE PAGE 990 FOR DETAILS




Terminals
inside
Switch box
A240048




- ▣ X1 EP1 D-UT 2-5-10
- ▣ X1 ES1 CLIPFIX 35
- ▣ X1 ES2 CLIPFIX 35

- ▣ X2 EP2 D-UT 2-5-10
- ▣ X2 EP3 D-UT 2-5-10
- ▣ X2 ES3 CLIPFIX 35
- ▣ X2 ES4 CLIPFIX 35

990TEXTPLATE2

<p>CE 0344 BARTEC D-P2209</p> <p> II 2D Ex tb IIIC T80°C Db</p> <p>DEKRA 13 ATEX 0209</p> <p>Ex tb IIIC T80°C Db 400-230VAC/50Hz</p> <p>IECEX DEK 13.0075kW../2015 Ta -20°C ... +40°C</p> <p>SERIAL Nr.:</p> <p>SEE INSTALLATION INSTRUCTION DOCUMENT</p>	<p>BARTEC Boelewerf 25 2987 VD Ridderkerk www.bartec.nl</p>
--	---

- CE sticker Bartec

Designer: MV Design date: 11-12-2017 Rev. nr.: H Status: Released	Project name : - Project number : - Customer: - Customer number: -		Product: SWITCH BOX CR FOR SAFETY SWITCH Item number: A240048 Doc. number: A240048_Page-990.dwg	Drawing descr.: Text plate	Sheet: 990 Inst.: Loc.:
--	---	---	---	----------------------------	-------------------------------