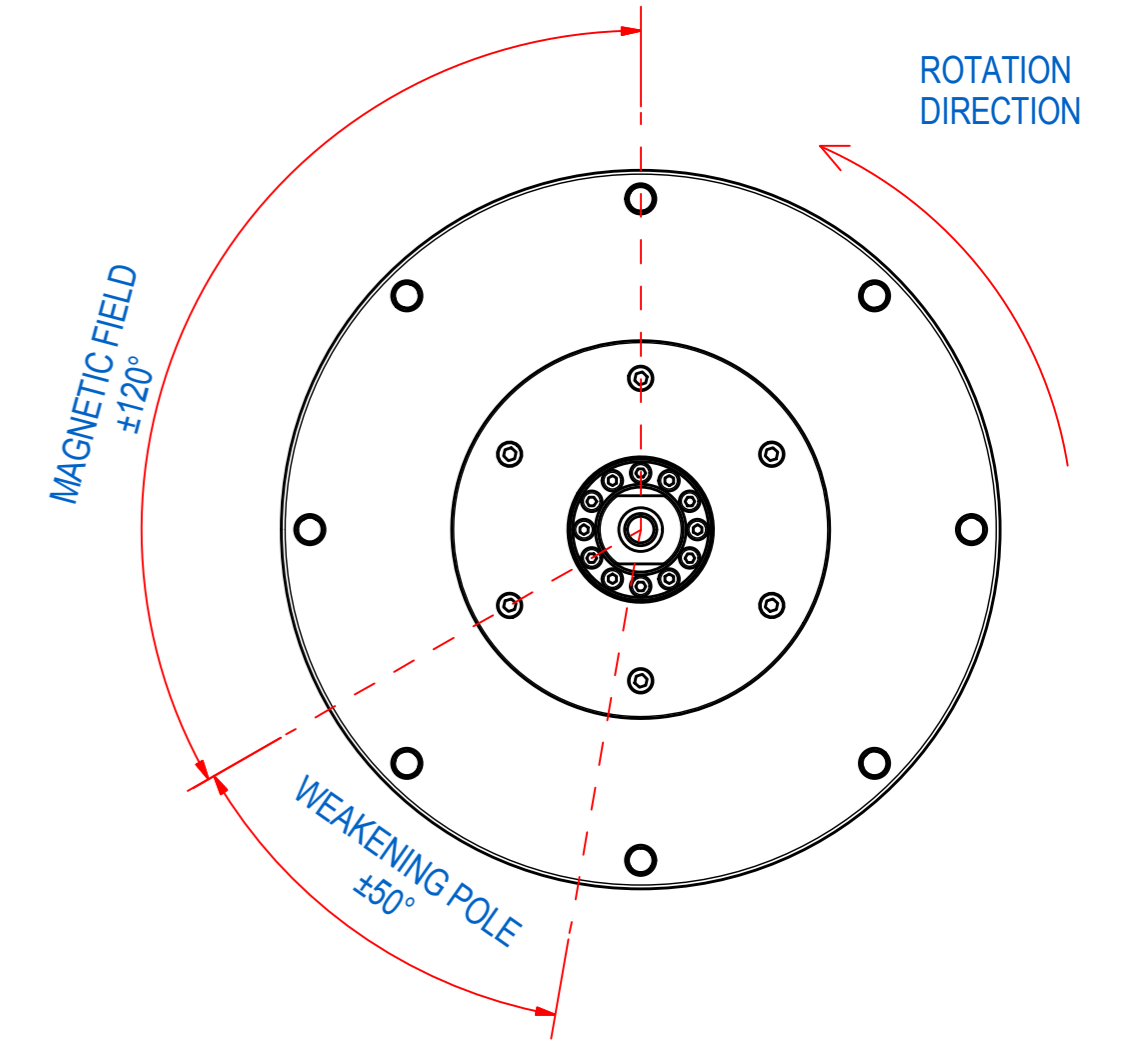
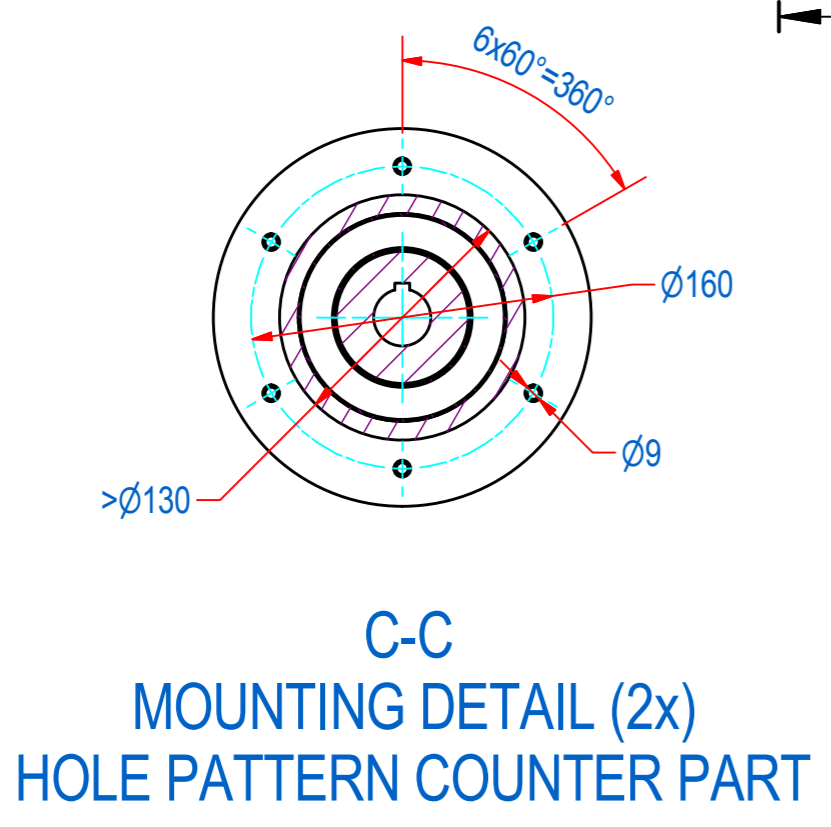
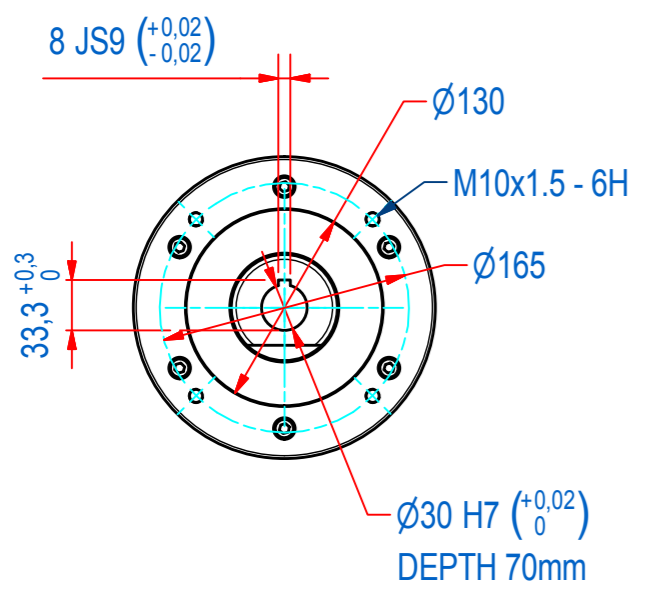
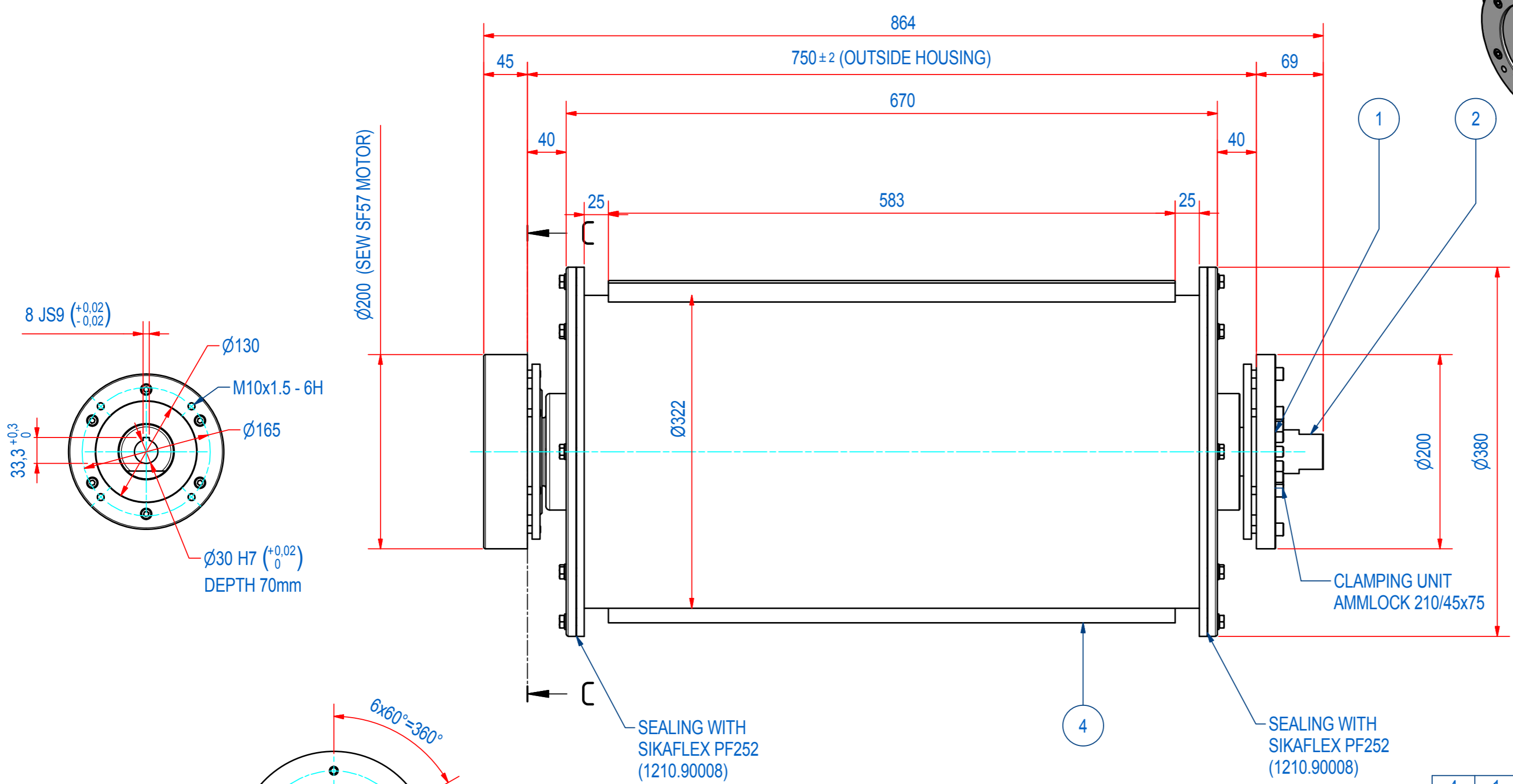
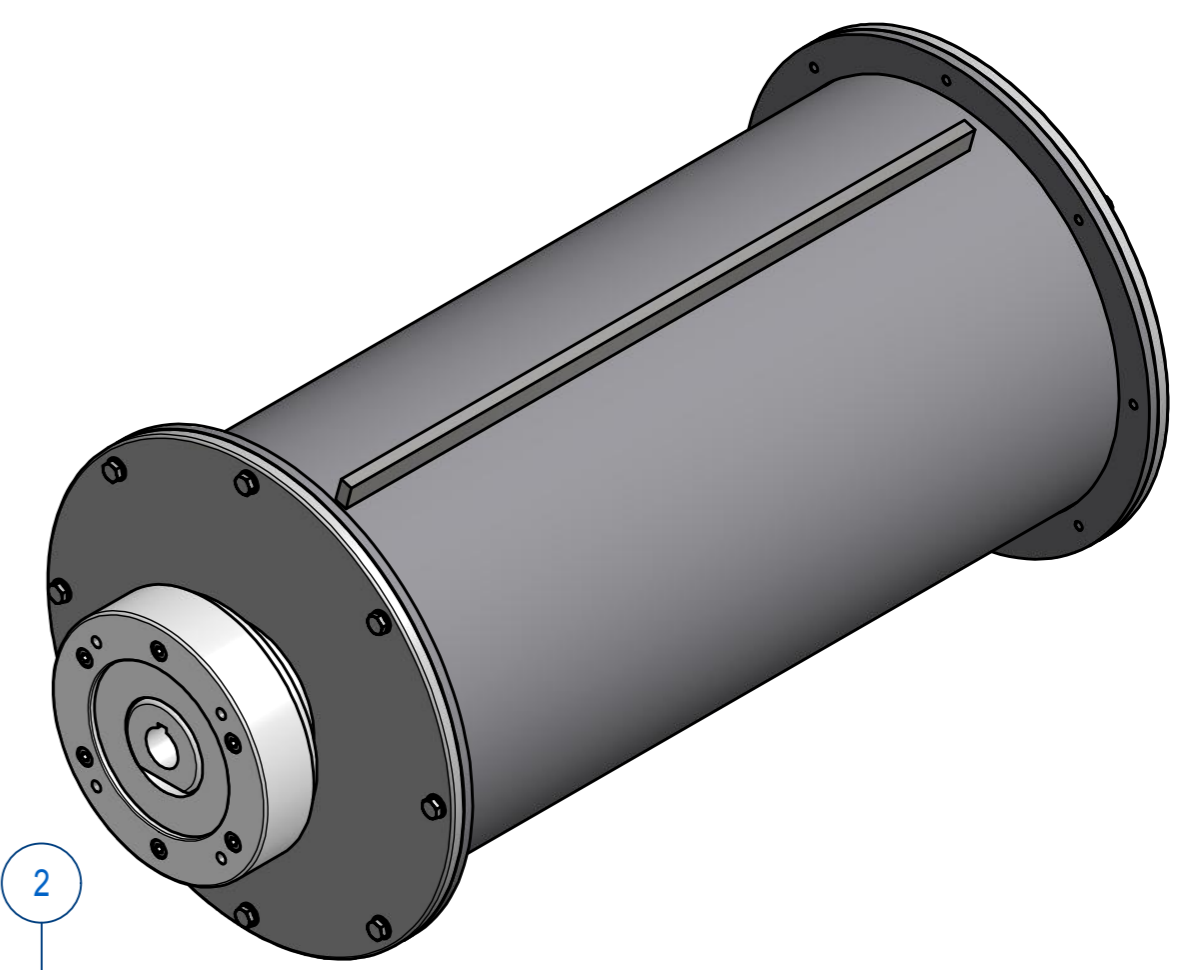


REV	DATE	BY	DESCRIPTION
-	9-12-2014	TD	Reference drawing = E0025948
A	23-9-2015	TD	
B	27-9-2016	DD	SHELL CHANGED, PRODUCT KEY CHANGED



ITEM	QTY	PART NUMBER	DESCRIPTION	Dimensions	
4	1	E0060208	SHELL WITH CLEATS RECD 06		
3	1	E0018022	DR-06-B DRUM ASSY		
2	1	E0017822	DR-06 AXLE R304		
1	1	E0011058	DR-00 FLANGE ASSY ALU		
RAW MAT.	QTY	MAT. NUMBER	MAT. DESCRIPTION	LENGTH (mm)	WIDTH (mm)
⊕	1				
Sheet:	A2		Extra info:	General tolerance: ISO 2768 - mK	
Drawn:	TD		Weight (kg): 126,2	Drawn according: ISO268; ISO1101; ISO2553	
Date:	9-12-2014			Status: Released	
Spare part:	False			Customer reference number:	
Quick search:	RMD-06		<b>GOUDSMIT</b> MAGNETIC SYSTEMS <small>© All rights reserved. Reproduction is not permitted without written permission of GOUDSMIT Magnetic Systems BV</small>	File number:	E0025948
Description:	RMD-06-32-RN-B-OR-30S2			Part number:	E0025947
				Rev:	B
				Rev:	B