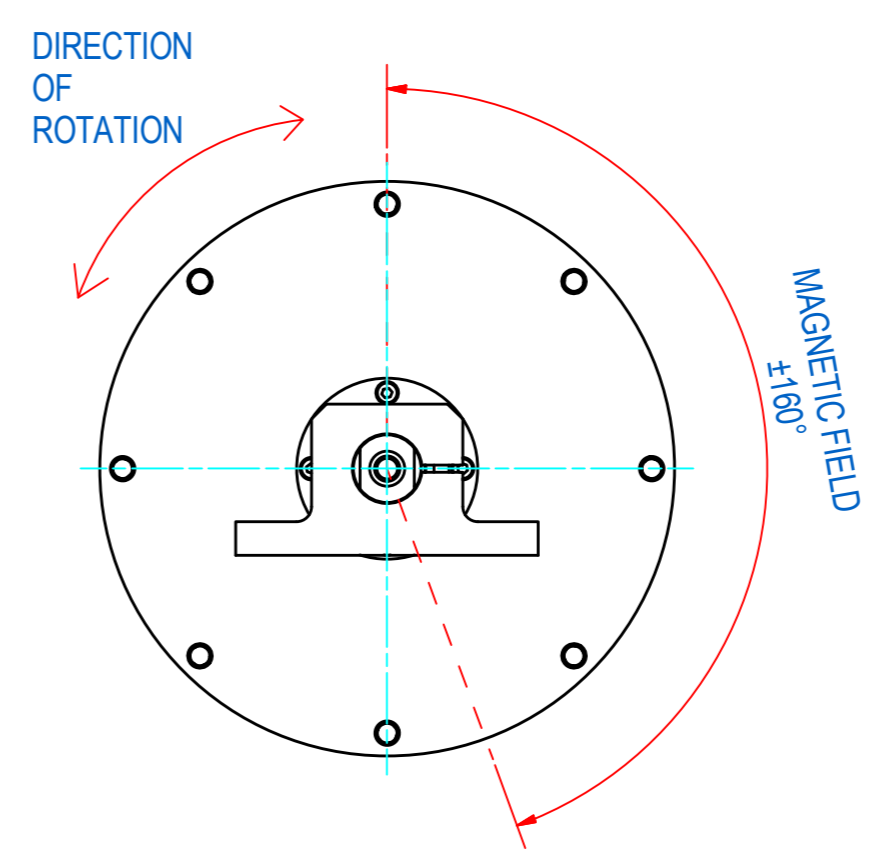
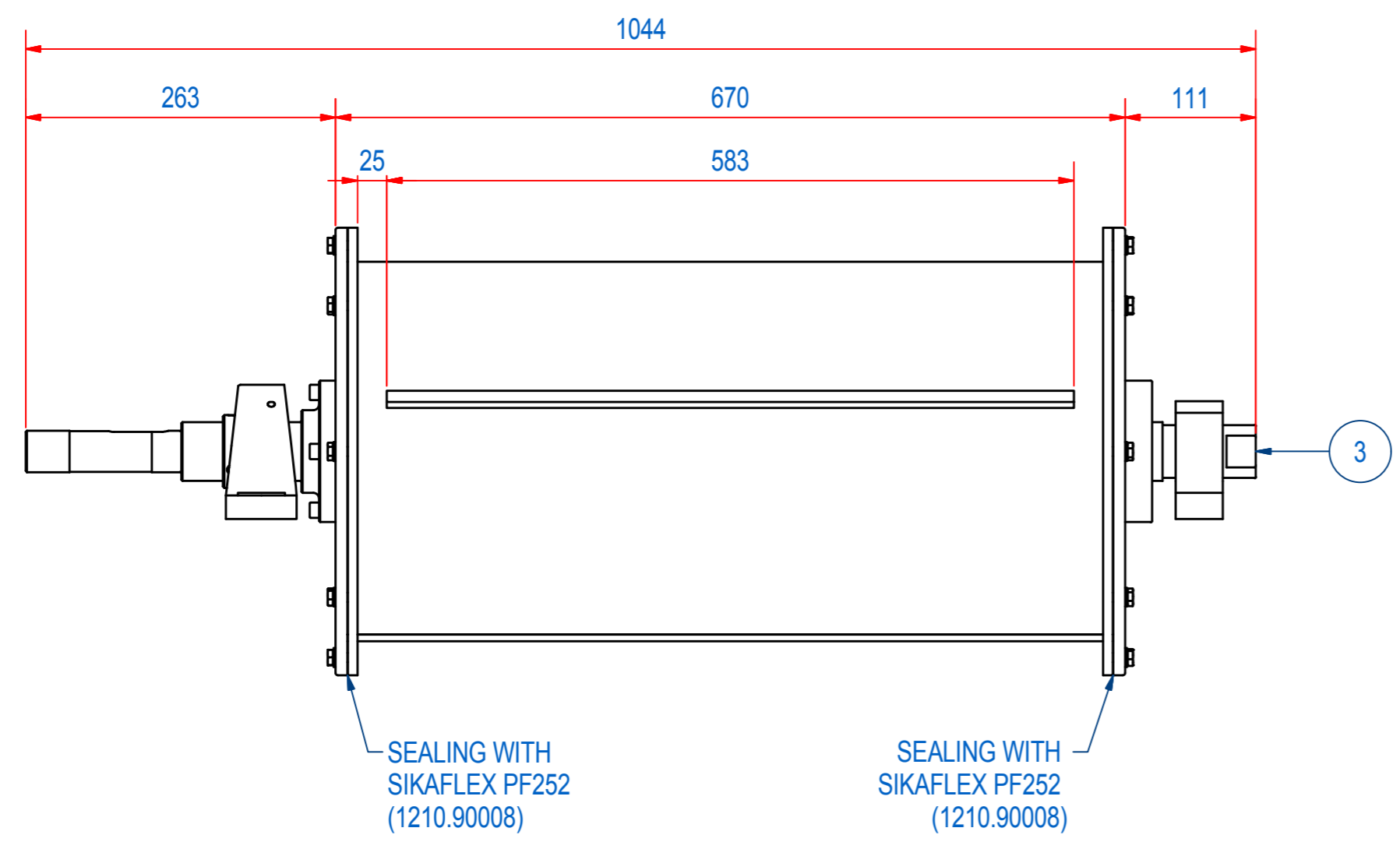
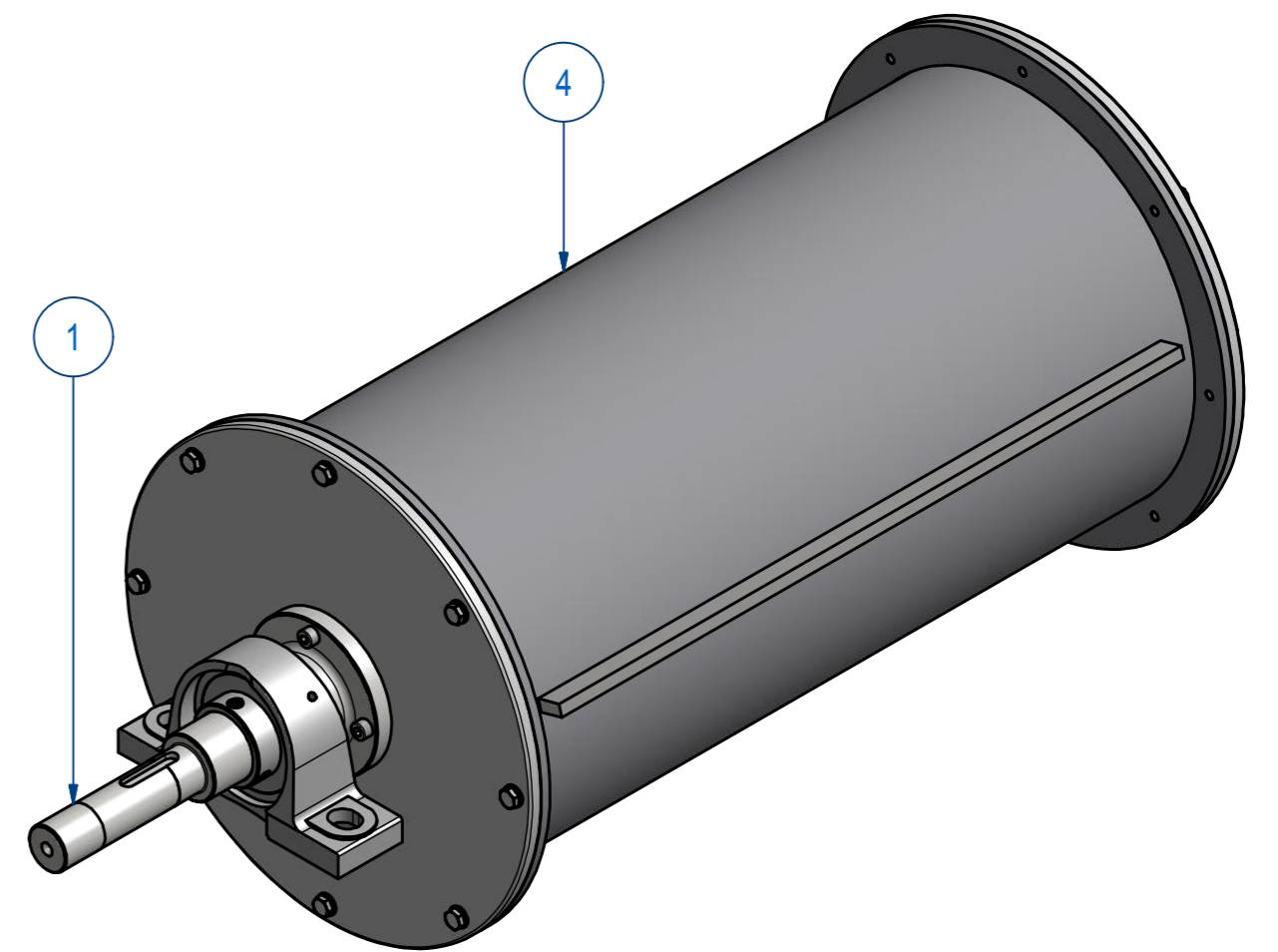
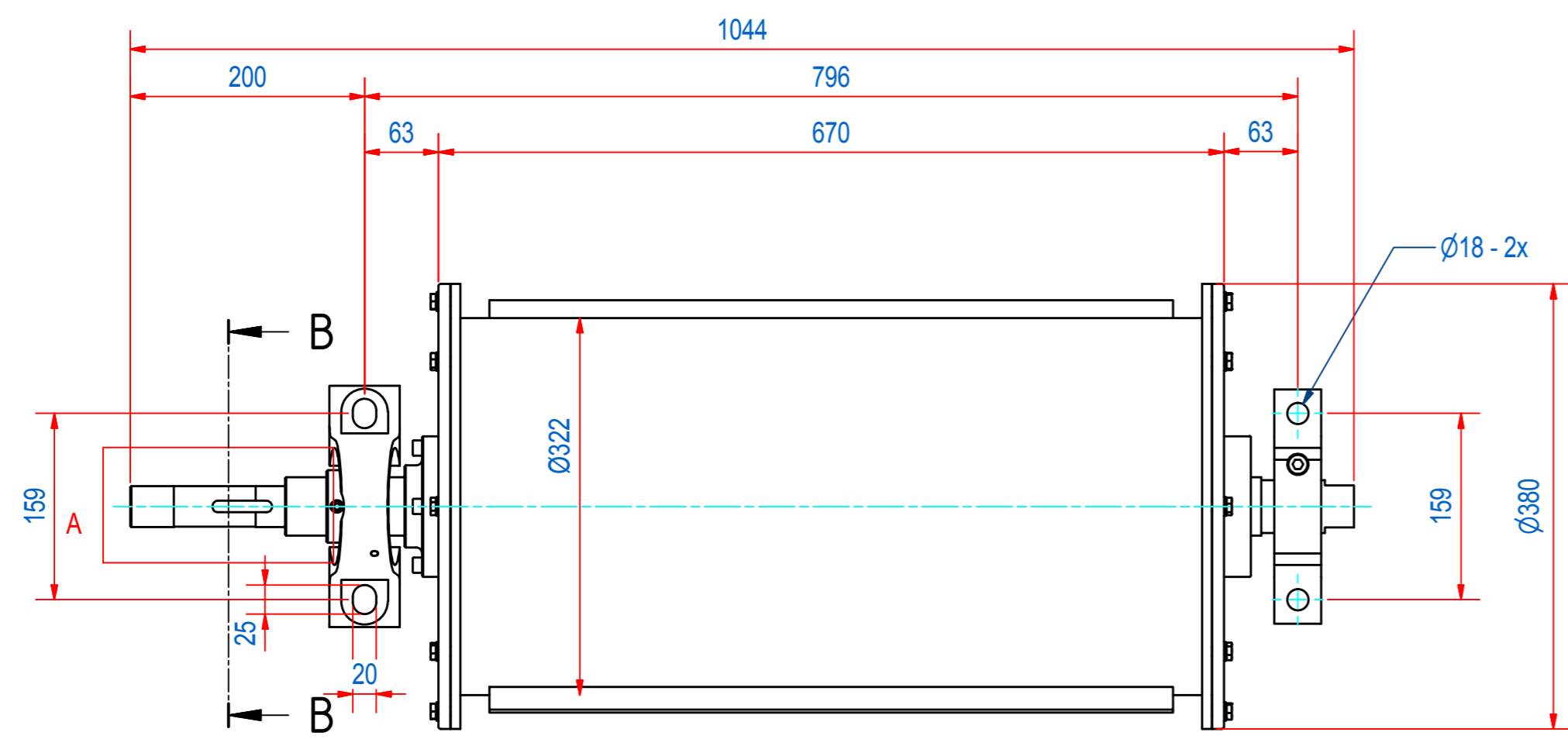
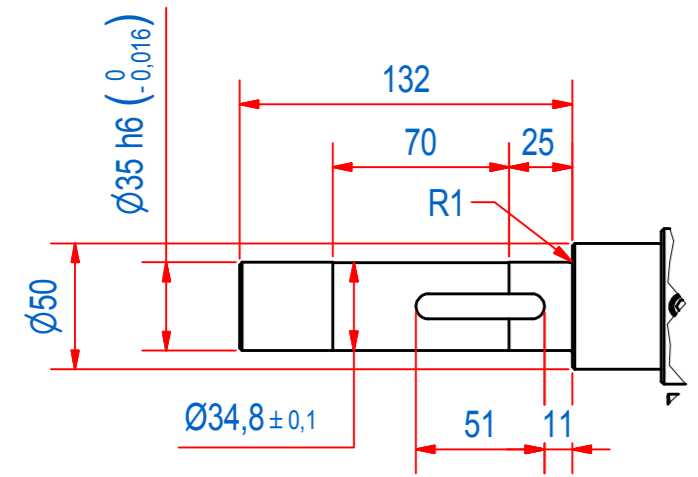


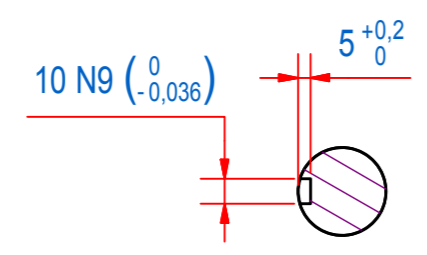
3	DOC.NR.	REV	DATE	BY	2	DESCRIPTION	1
	E0061078	-	30-9-2016	DD		ORIGINAL DRAWING	



A (1:3)



B-B (1:3)



4	1	E0060208	SHELL WITH CLEATS RECD 06		
3	1	E0017822	DR-06 AXLE R304		
2	1	E0026021	DR-06-F DRUM ASSY		
1	1	E0061072	DR-00 FLANGE WITH AXLE ASSY		
ITEM	QTY	PART NUMBER	DESCRIPTION	Dimensions	
RAW MAT.	1			Length (mm)	Width (mm)
Sheet: A2		Extra info:		General tolerance: ISO 2768 - mK	
Drawn: DD		Weight (kg): 97,4		Drawn according: ISO268; ISO1101; ISO2553	
Date: 28-9-2016				Status: Released	
Spare part: False				Customer reference number:	
Quick search: RMD-06		© All rights reserved. Reproduction is not permitted without written permission of GOUDSMIT Magnetic Systems BV		Document number: E0061078 Doc.Rev:	
Description: RMD-06-32-RS-F-OR-30S2				Part number: E0061054 Rev:	