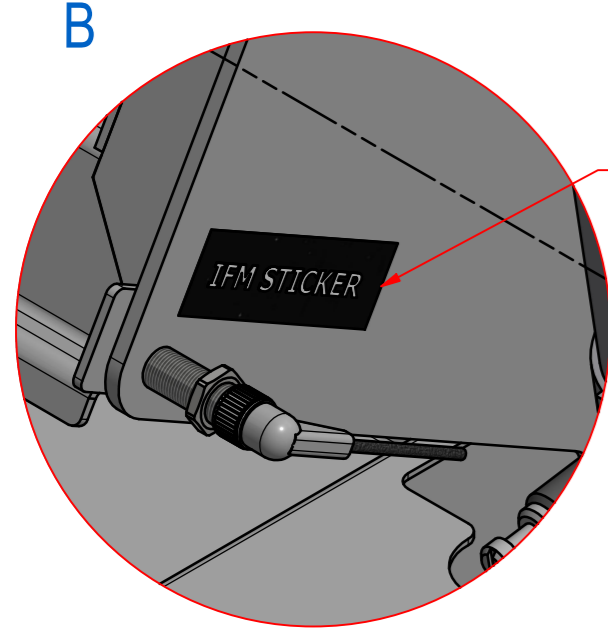
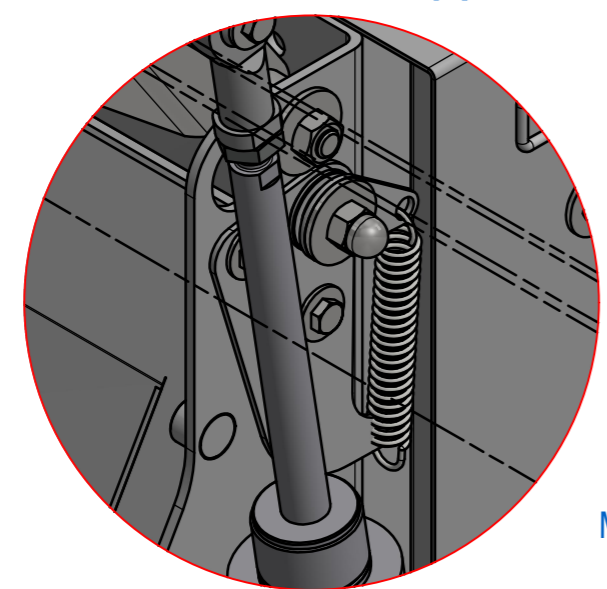
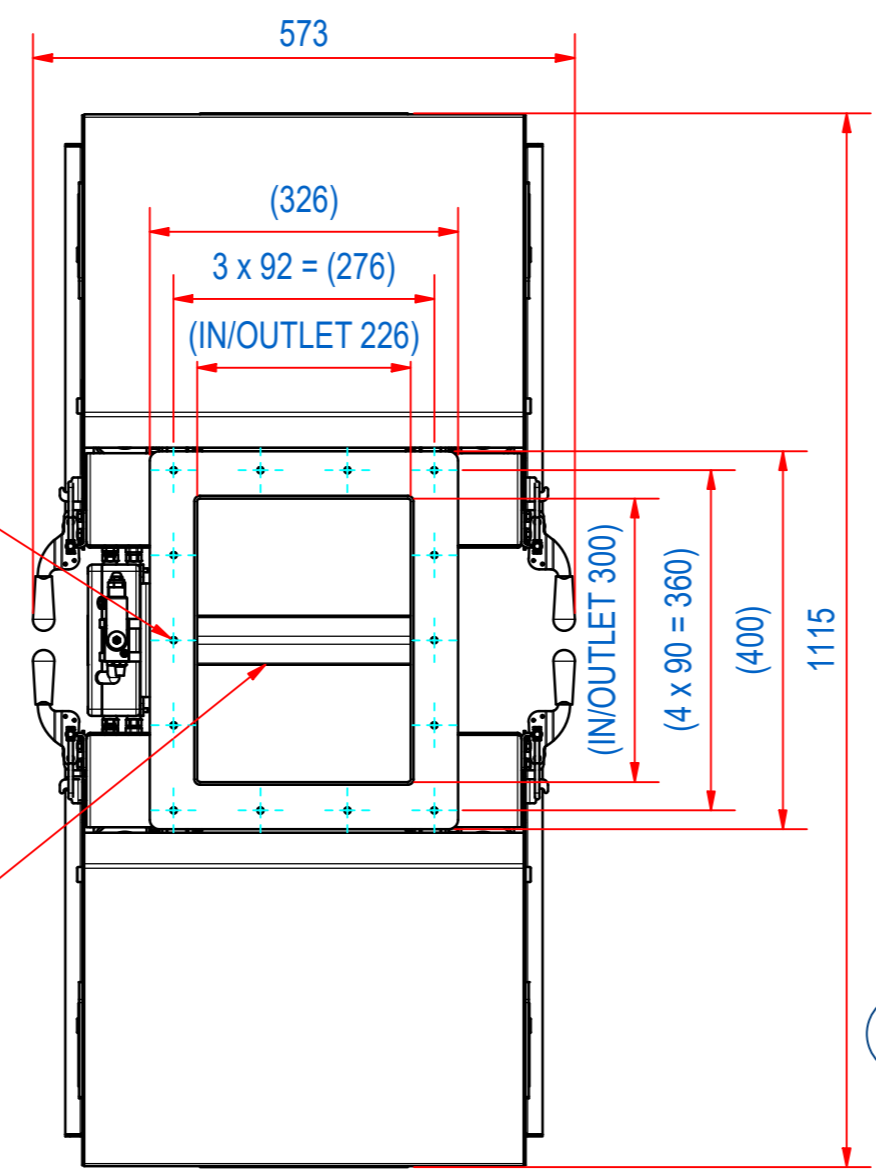


| DOC.NR. | REV | DATE | BY | DESCRIPTION |
|----------|-----|------------|----|---|
| E0119744 | - | 31-7-2019 | RO | REFERENCE DRAWING E0102164 |
| E0119744 | A | 18-8-2022 | CR | BOM CHANGED (UNDERLYING DRAWINGS CHANGED) |
| E0119744 | B | 27-11-2023 | CR | MC-C SOURCE CODE AND WARNING STICKERS ADDED |

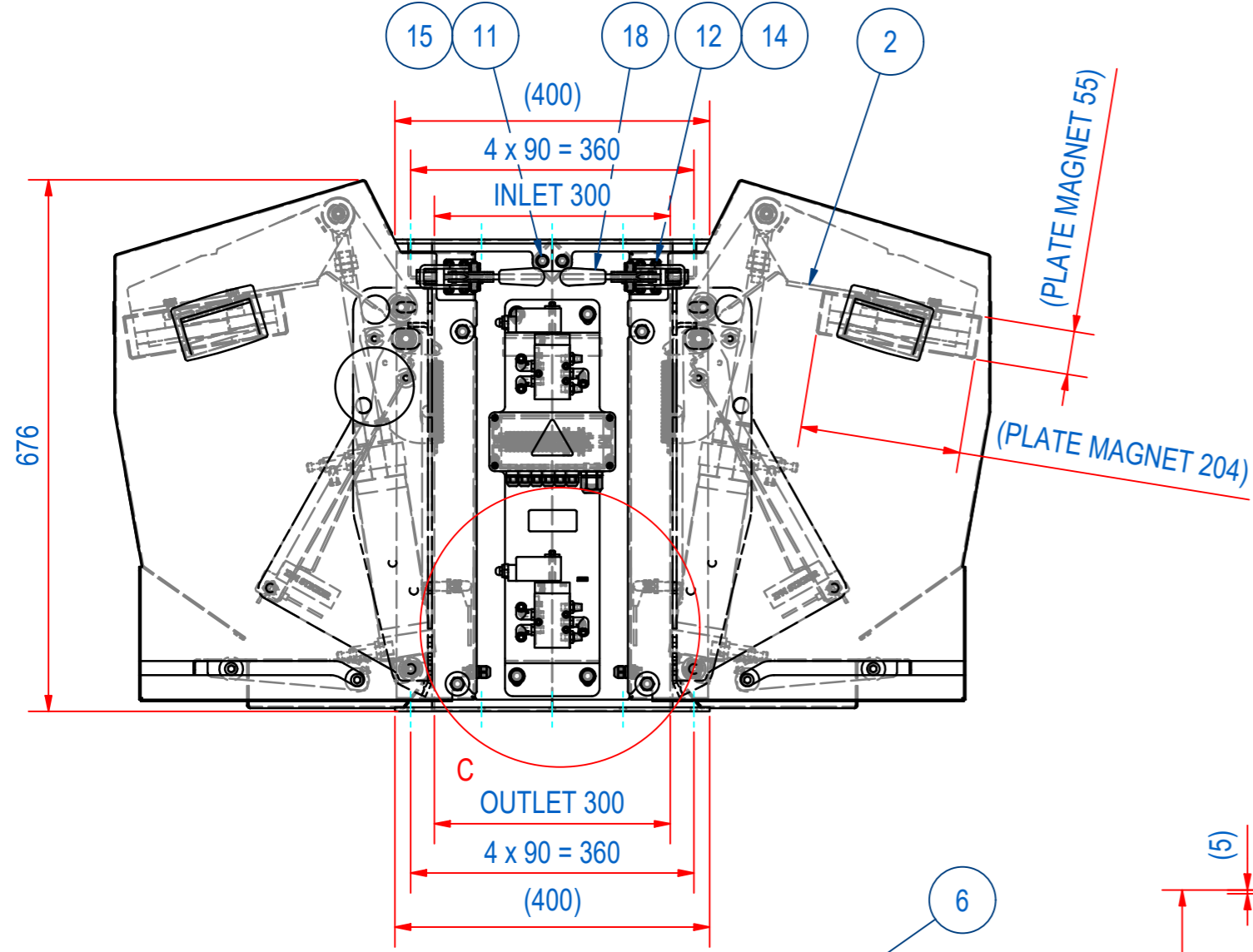
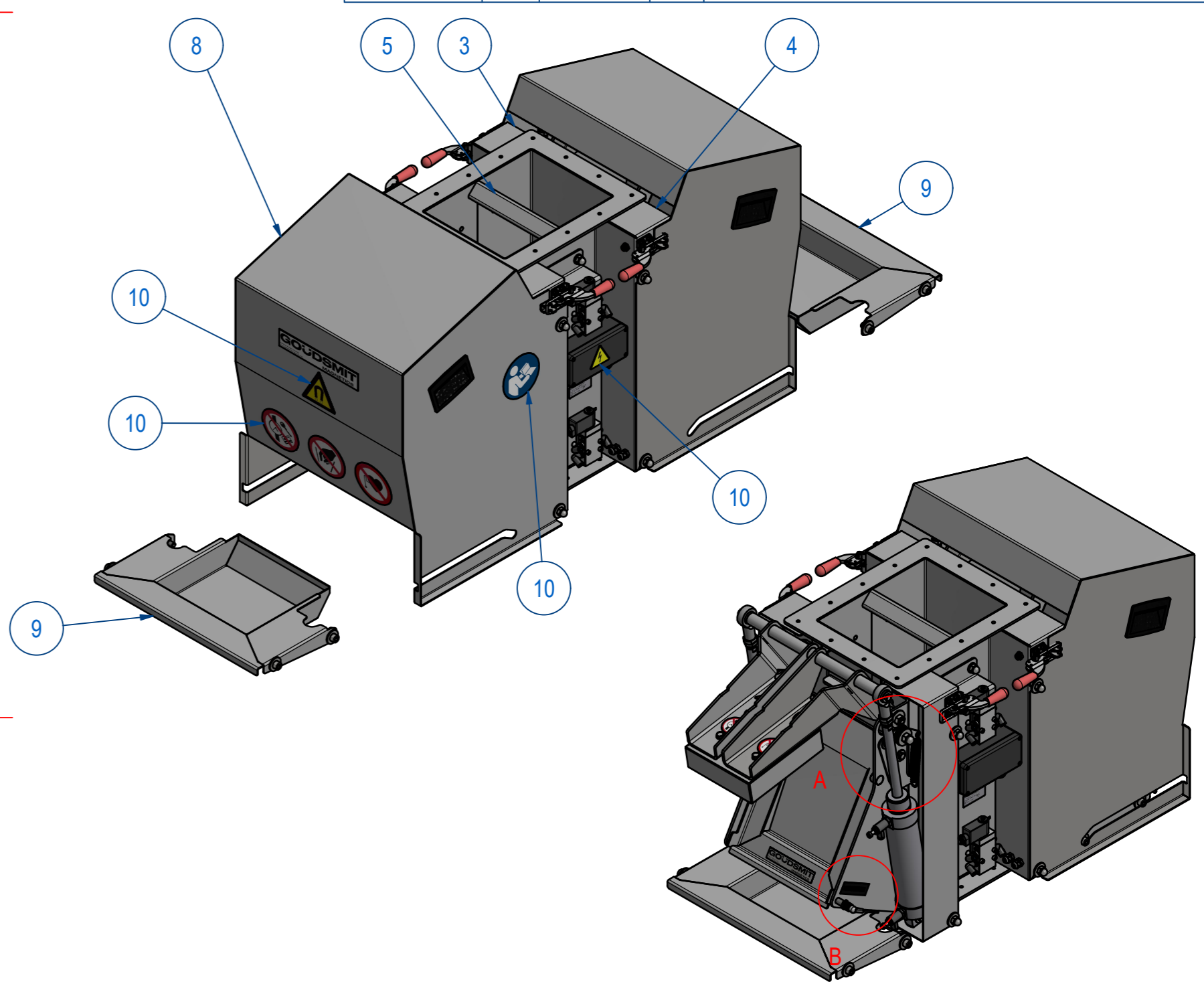


PLACE STICKER AT SENSOR (4x)
PLAATS STICKER BIJ SENSOR (4x)



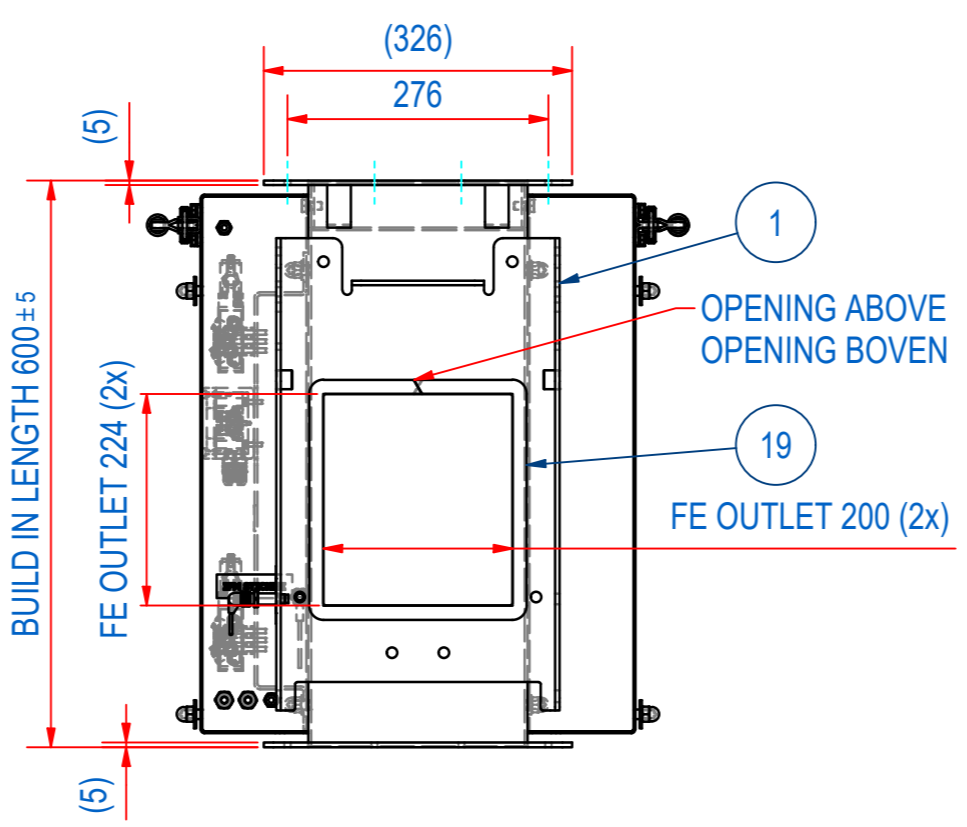
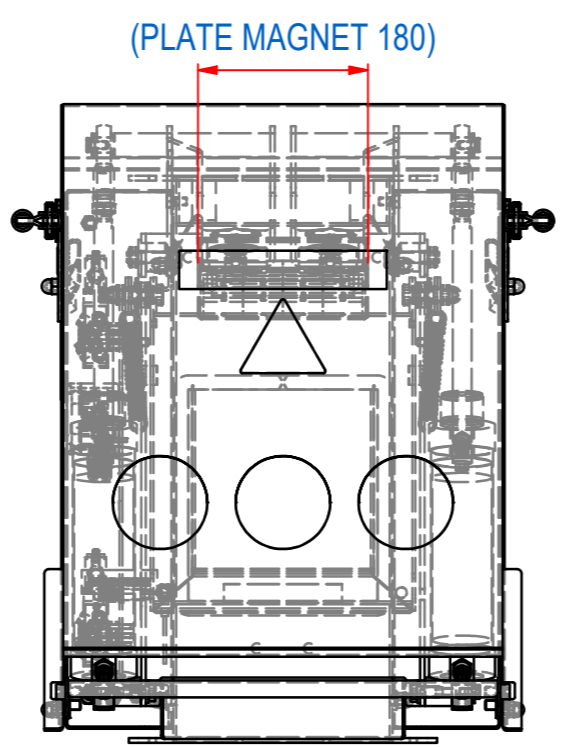
M8x1.25 - 6H (14x) (2x)

DEFLECTOR



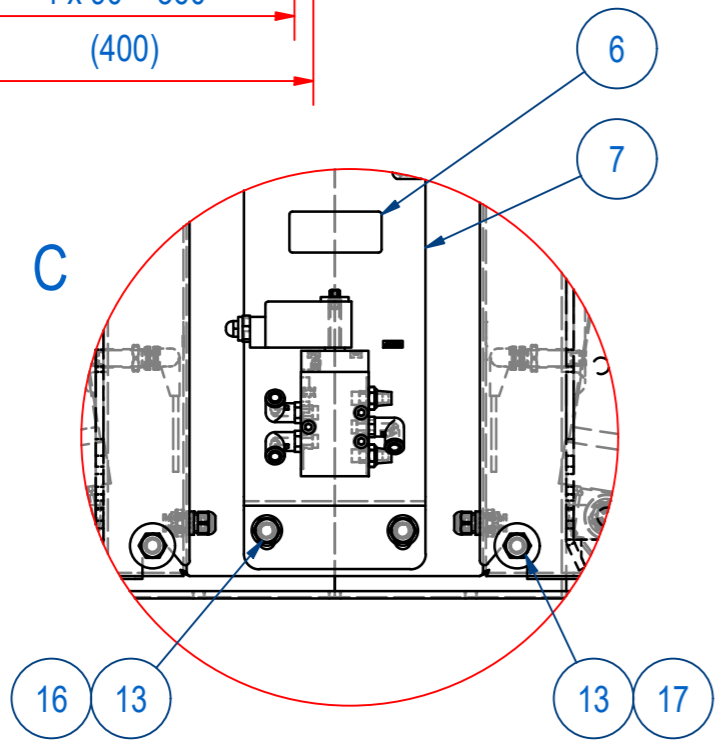
(PLATE MAGNET 55)

(PLATE MAGNET 204)



OPENING ABOVE
OPENING BOVEN

FE OUTLET 200 (2x)



| | | | | |
|----|----|------------|------------------------------------|---------|
| 19 | 2 | E0154307 | SBPA-S GASKET FOR VMN22-200 WHITE | |
| 18 | 4 | 1003.10006 | QUICK ACTING CLAMP 331-SS | |
| 17 | 8 | 70.8300010 | WASHER 3xd M10x30 - A4 | M10x30 |
| 16 | 8 | 70.0300010 | WASHER M10 - A4 | M10 |
| 15 | 4 | 70.0300008 | WASHER M8 - A4 | M8 |
| 14 | 16 | 70.0300006 | WASHER M6 - A4 | M6 |
| 13 | 16 | 60.3300010 | NUT, HEX CAP M10 - A4 | M10 |
| 12 | 16 | 60.0300006 | NUT, HEX M6 - A4 | M6 |
| 11 | 4 | 50.1308016 | BOLT, HEX M8x16-A4 | M8 x 16 |
| 10 | 1 | E0149152 | SBPA-000 WARNING STICKERS | |
| 9 | 2 | E0154303 | SBPA-0200 COLLECTOR TRAY | |
| 8 | 2 | E0154305 | SBPA-0200 COVER | |
| 7 | 1 | E0149151 | SBPA-000 CONTROL UNIT EX I13GD | |
| 6 | 1 | E0154524 | SBPA-TYPE PLATE Ex 1/3D | |
| 5 | 1 | E0120314 | SBPA-S-0200 DEFLECTOR 40x40 | |
| 4 | 1 | E0119946 | SBPA-SUPPORT PLATE CHUTE WELD ASSY | |
| 3 | 1 | E0119970 | SBPA-ASSY SUPPORT PLATE CHUTE | |
| 2 | 2 | E0119695 | SCHZ-P-N-204x55-0200-B-B-B | |
| 1 | 1 | E0119684 | SBPA-2330 HOUSE CHUTE | |

| ITEM | QTY | PART NUMBER | DESCRIPTION | Dimensions |
|-------------------|----------------------|-----------------|----------------------|---|
| RAW MAT. | 1 | | | |
| Quantity | | Material Number | Material Description | Length (mm) Width (mm) |
| Sheet: | A2 | Extra info: | | General tolerance: ISO 2768 - mK |
| Drawn: RO | Weight (kg): 155 | | | Drawn according: ISO286; ISO1101; ISO2553 |
| Date: 30-7-2019 | | | | Status: Standard |
| Spare part: False | Source: MC-C | | | Customer reference number: |
| Quick search: | | | | Document number: E0119744 Doc.Rev: B |
| Description: | SBPA-2330-N-F1E-B-D3 | | | Part number: E0119744 Rev: B |



© All rights reserved. Reproduction is not permitted without written permission of GOUDSMIT Magnetic Systems BV