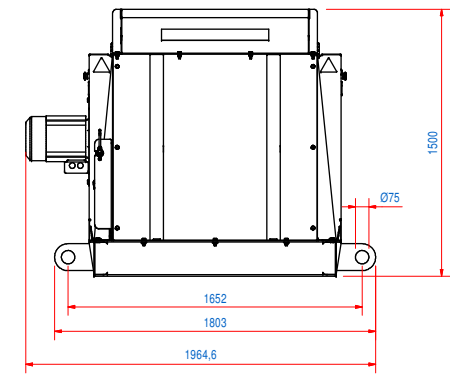
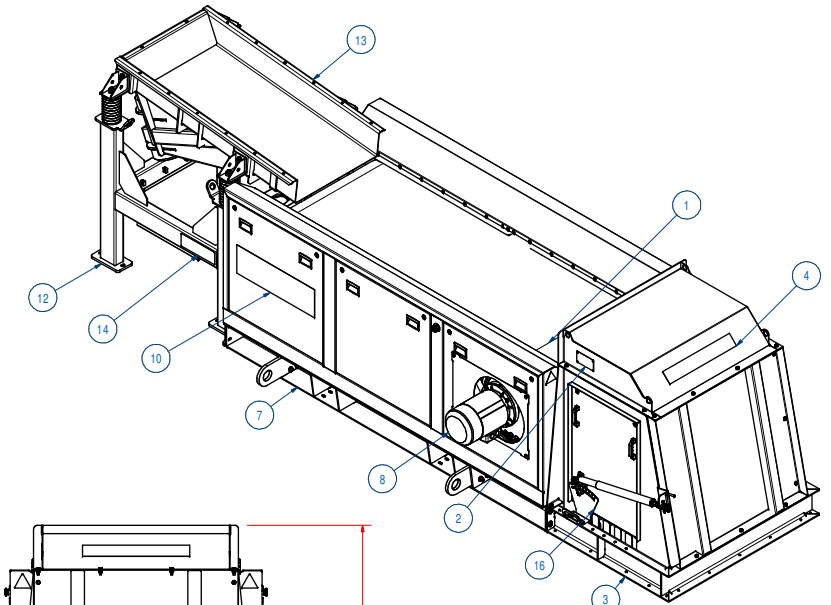
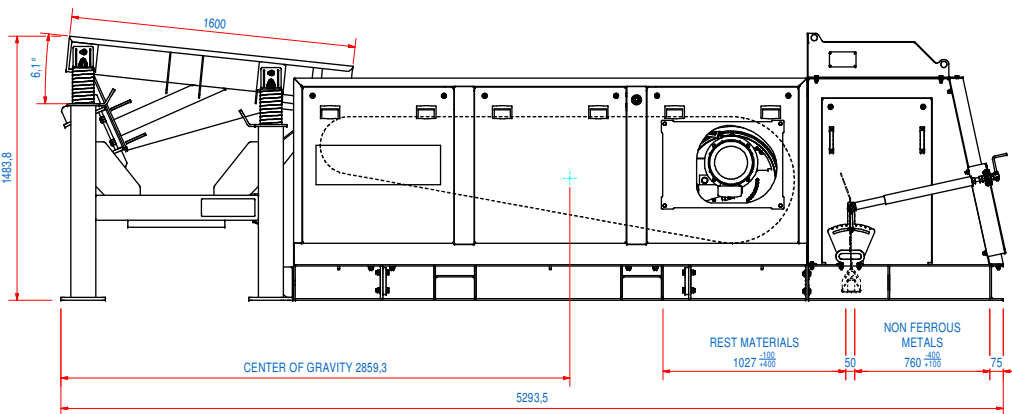
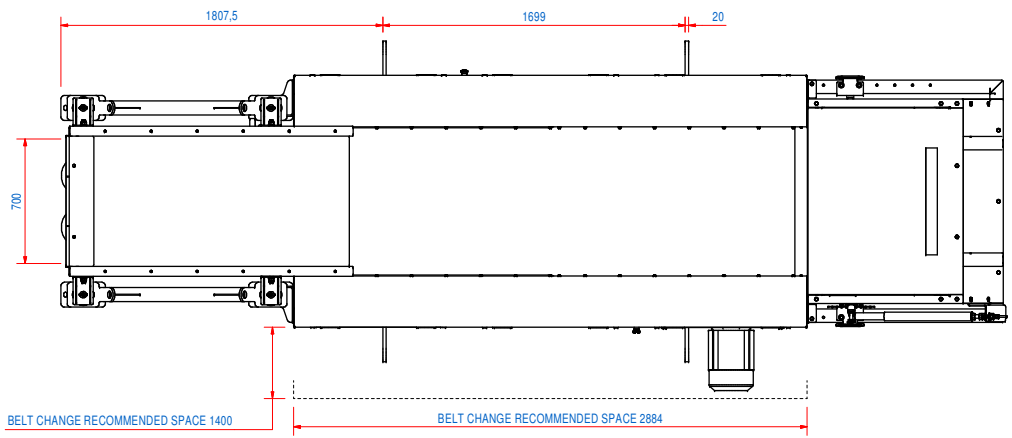
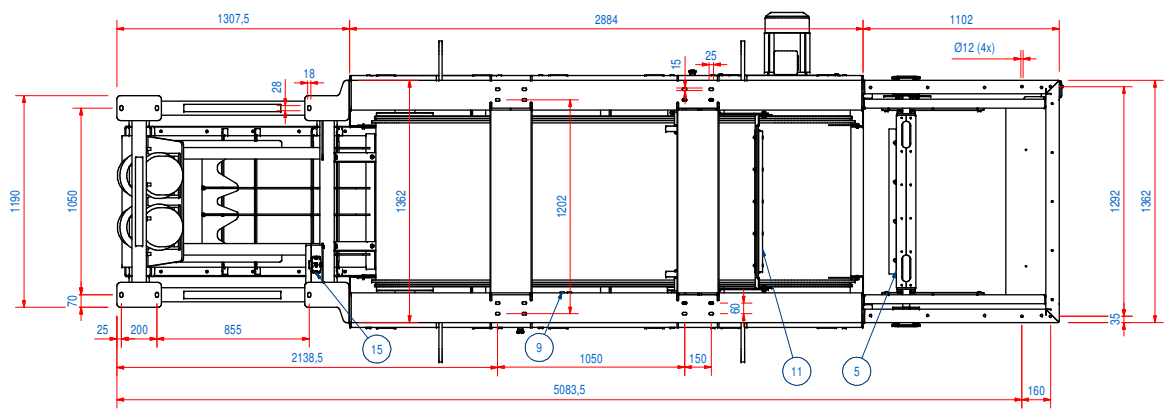


DOC. NR.	REV	DATE	BY	DESCRIPTION
E0136839	-			ORIGINAL DRAWING

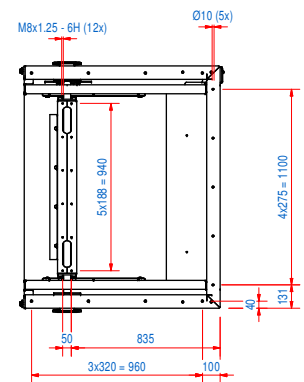


RECOMMENDED FREE SPACE AROUND THE MACHINE FOR INSPECTION IS 800 MM

LAYOUT MOUNTING HOLES



LAYOUT MOUNTING HOLES FUNNEL



ITEM	QTY	PART NUMBER	DESCRIPTION	Dimensions
16	1	E0108037	RECE-SA-S-R	
15	1	E0134176	RECV-CS-C-N	
14	2	E0129382	STICKER ECS HOISTING	
13	1	E0122479	RECV-VB-08-VM16-05-N	
12	1	E0122567	RECV-VF-08-N	
11	1	E0123391	RECE-BS-08-F-NBR	
10	2	E0120506	STICKER EDDYFINES W700 H222 WHITE	
9	1	E0109220	RECE-CS-C	
8	1	A200691	RECMS-08-E38HI	
7	1	E0122808	RECE-EF-08-F-R	
5	1	E0123426	RECE-SP-08-FM	
4	2	E0120519	STICKER GOUDSMIT MAG. W600 WHITE	
3	1	E0123226	RECE-SB-08-M-ST	
2	1	E0098479	DATA PLATE	
1	1	E0122682	RECE-CB-08-F-PU-24	

RAW MAT.	Quantity	Material Number	Material Description	Length (mm)	Width (mm)
Sheet: A1 Drawn according to: ISO 2768- mK Weight (kg): 3040 Date: 22-10-2020 Status: Work in Progress Spare part: FMSI Source: MC-C Customer reference number: Document number: E0136839 Part number: E0136839 Disc No:					
Electrical Properties CURRENT: 25 A POWER: 16,5 kVA Description: REC-08-E38HI-N-MAB-FMS-PU-R Part number: E0136839 Rev:					