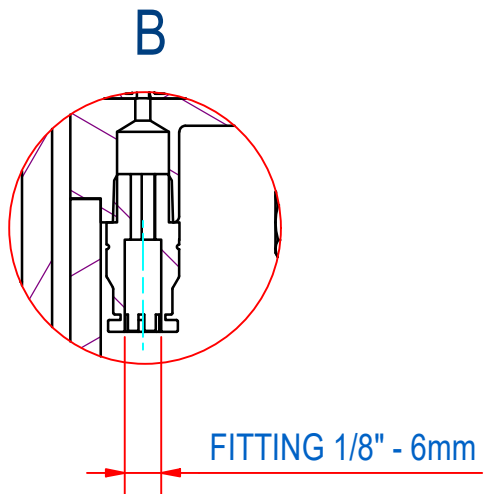
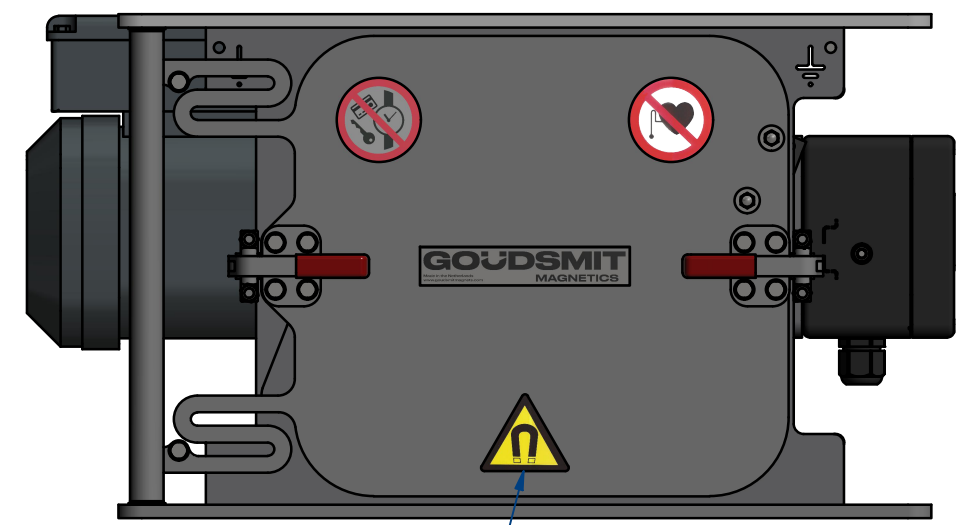
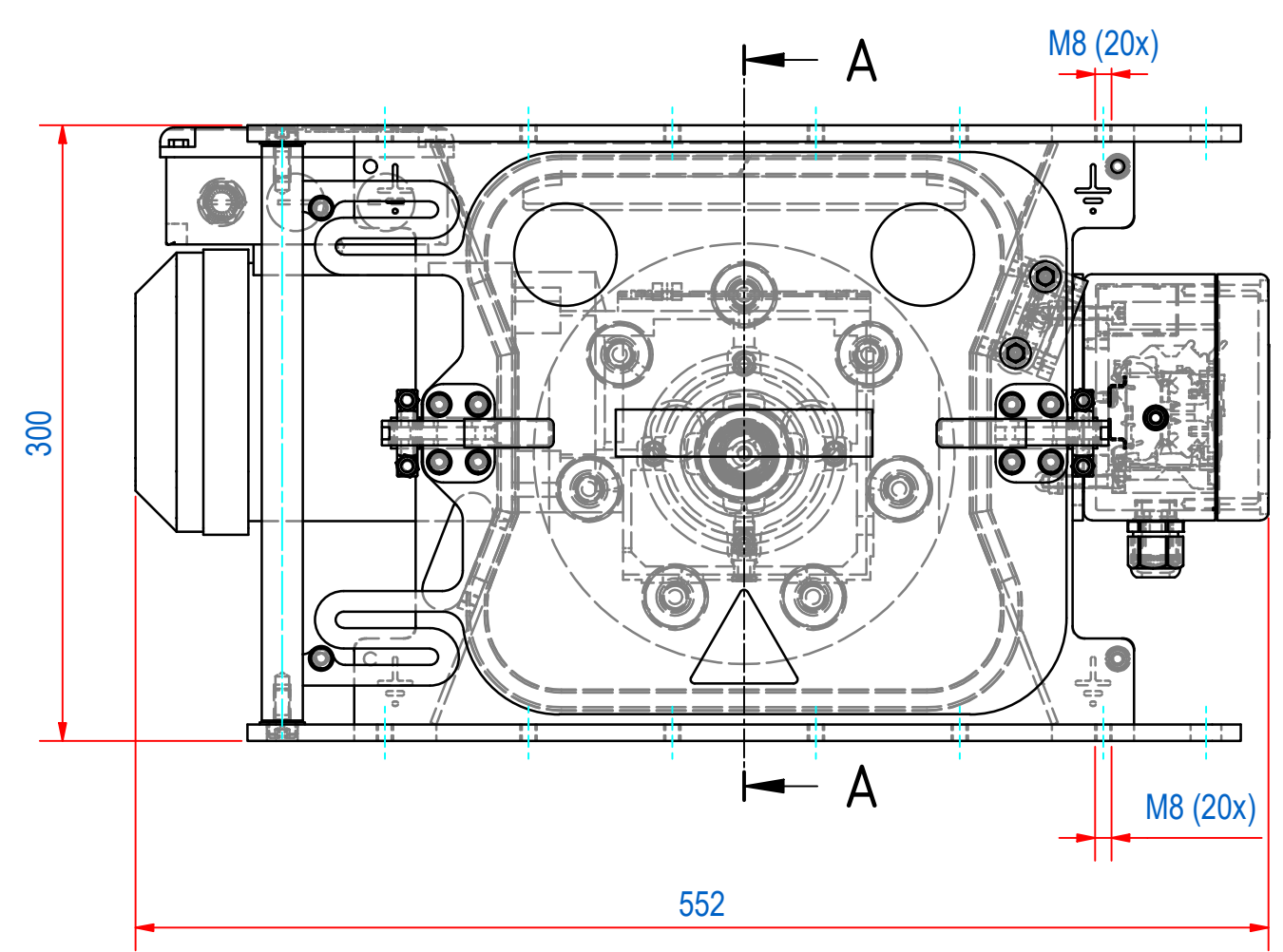
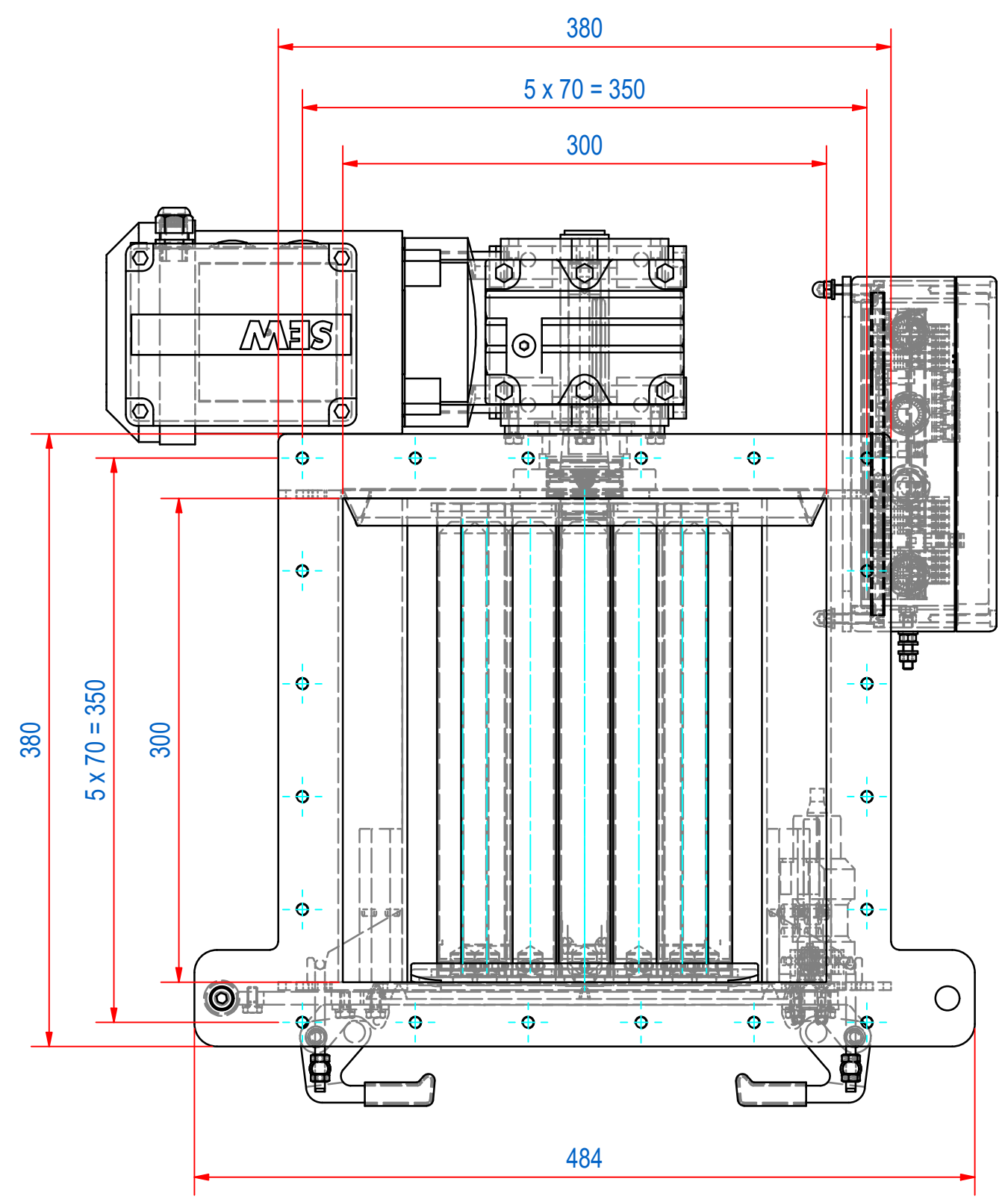
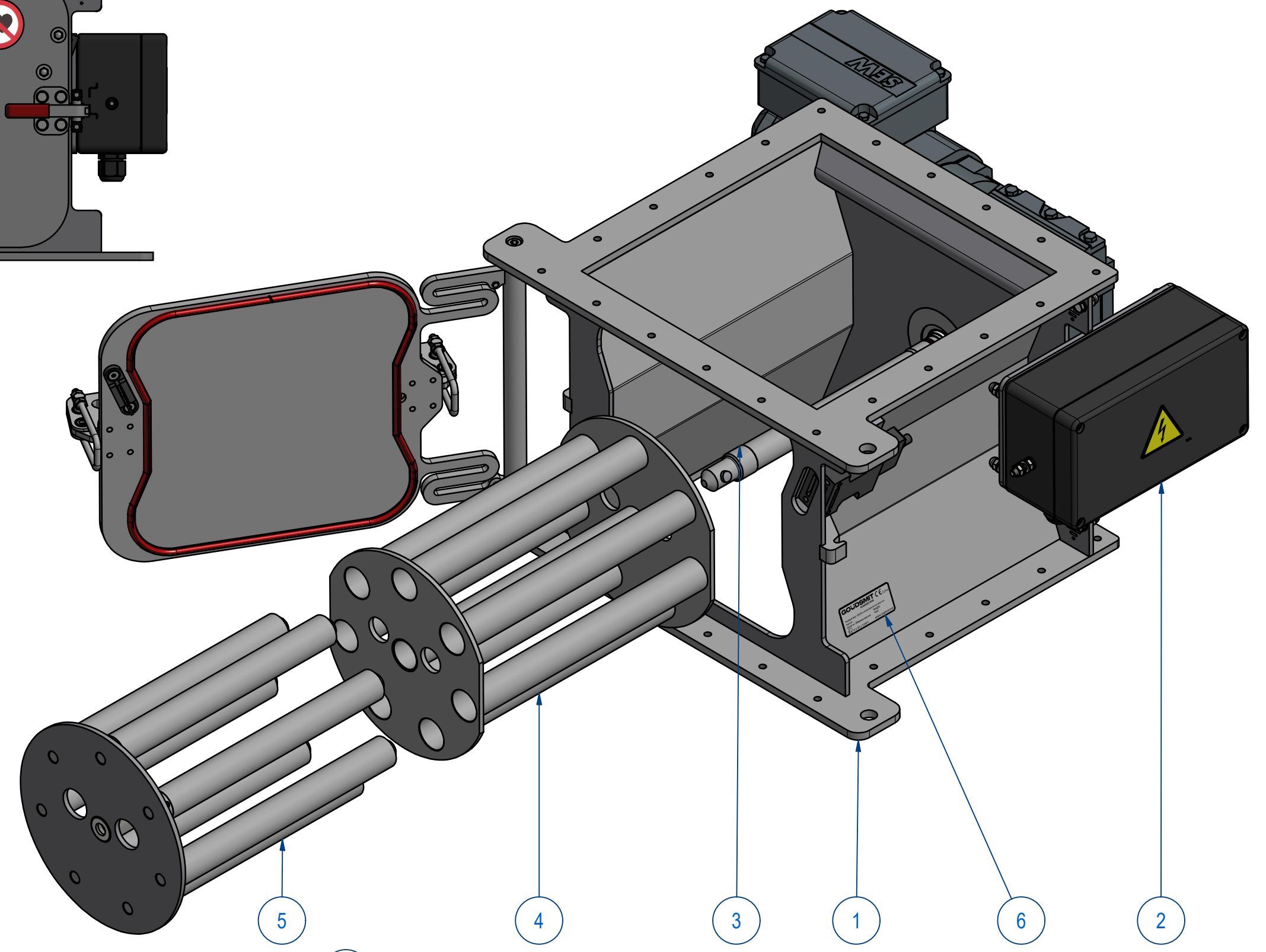
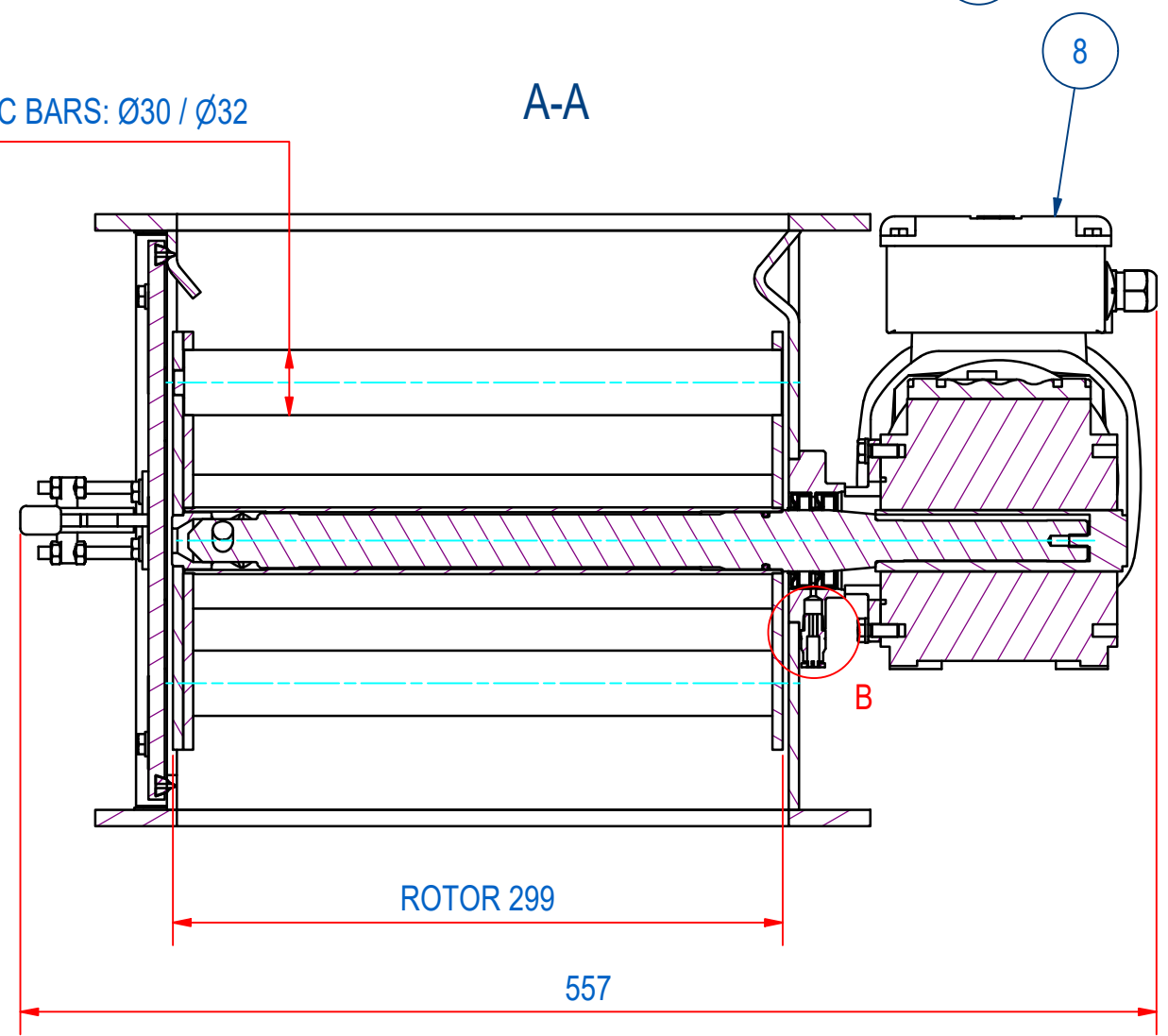


REV	DATE	BY	DESCRIPTION
-	2-2-2023	AvD	REFERENCE DRAWING SCRA3030012



MAGNETIC BARS: Ø30 / Ø32



THIS DRAWING CORRESPONDS WITH ATEX SCHEDULE DRAWING **M53674**

ITEM	QTY	PART NUMBER	DESCRIPTION	Dimensions
8	1	MO03704202	WA30/II2GD EDNR71M4/2GD/KCC/AL 42RPM	
7	1	E0090159	STICKERS FOR SCRA/SCRB	
6	1	E0090155	TYPE PLATE SECR II 1/2D c T140°C	
5	1	E0153215	SECR-S-3030-07C-HT MAGN PLATE	
4	1	E0152633	SECR-S-3030-07C-B EXTRACTOR	
3	1	A240060	SECR-S-3030 SHAFT	
2	1	A240059	TERMINAL BOX MOUNT ASSY	
1	1	A240057	HOUSE + DOOR CR3030	

RAW MAT.	Quantity	Material Number	Material Description	Length (mm)	Width (mm)
1	1				

Sheet: A2	Extra info: <i>Cleanflow magnet rotating Manual cleaning</i>	General tolerance: ISO 2768 - mK
Drawn: AvD	Weight (kg): 55	Drawn according: ISO268; ISO1101; ISO2553
Date: 2-2-2023	Source: False	Status: Released
Quick search: CR3030	Customer reference number:	
Description: SECR-B-3030-07C-HT-Ex-F1m-B-B-M1-SR-B	Document number: E0157624	Doc.Rev: -
	Part number: E0157624	Rev: -