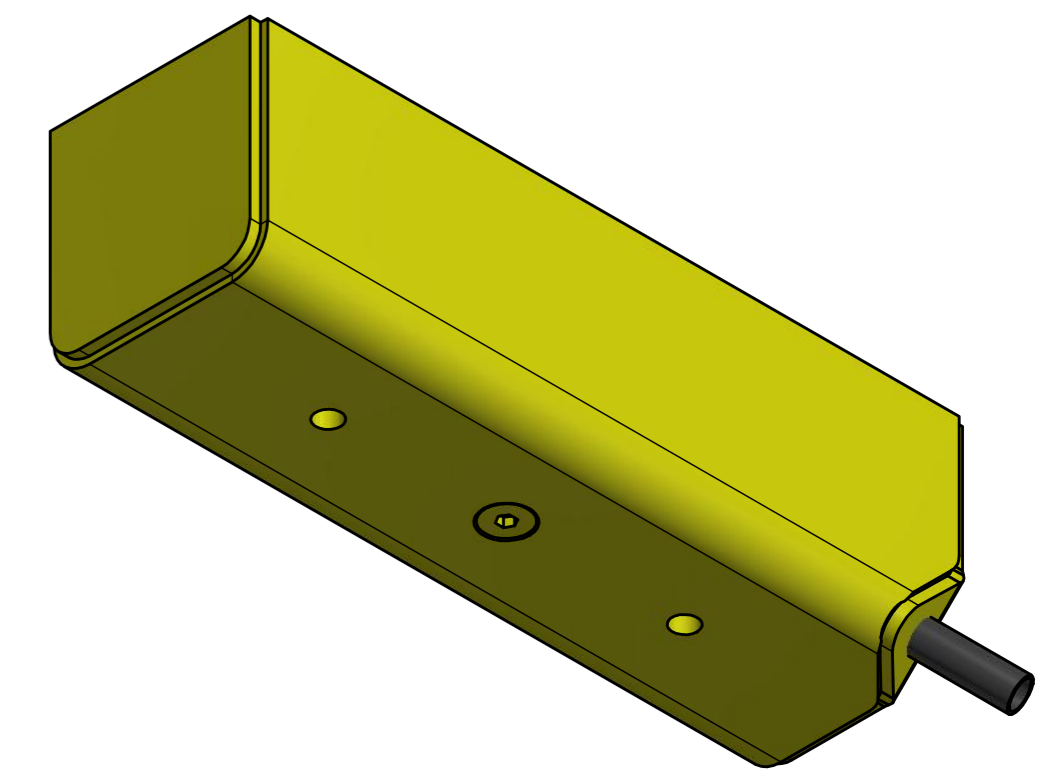
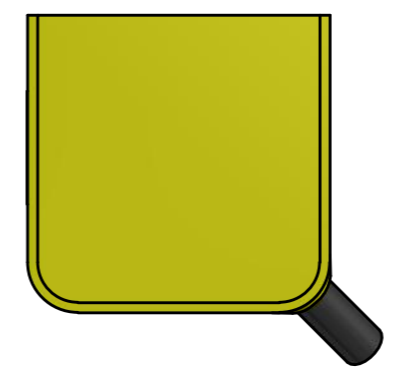
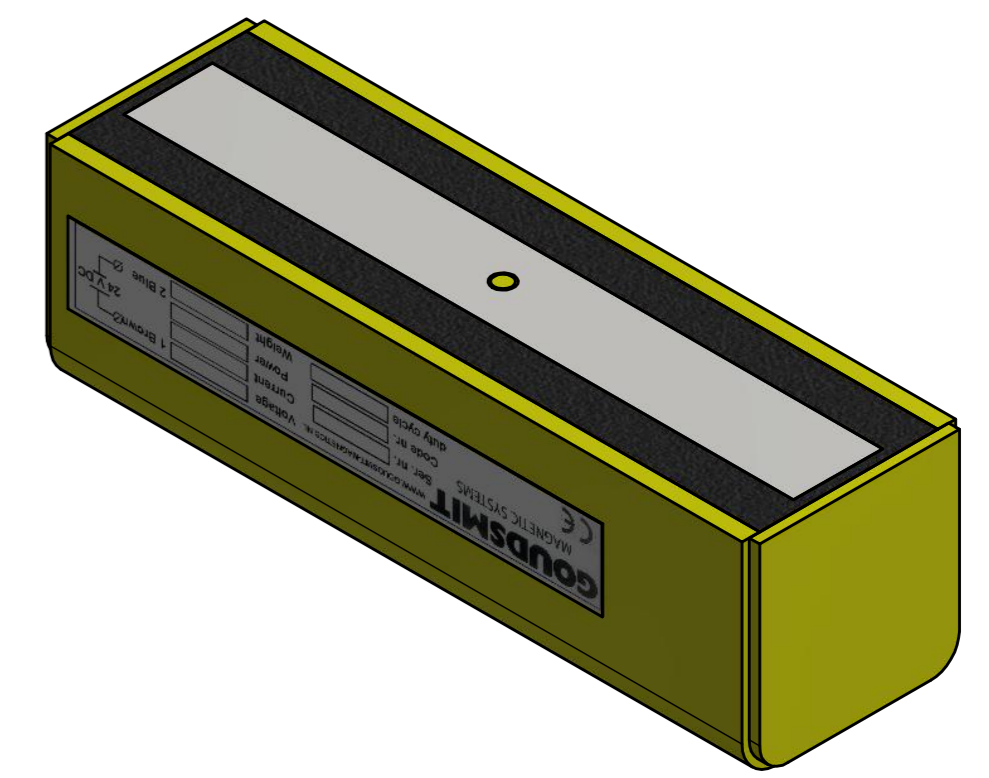
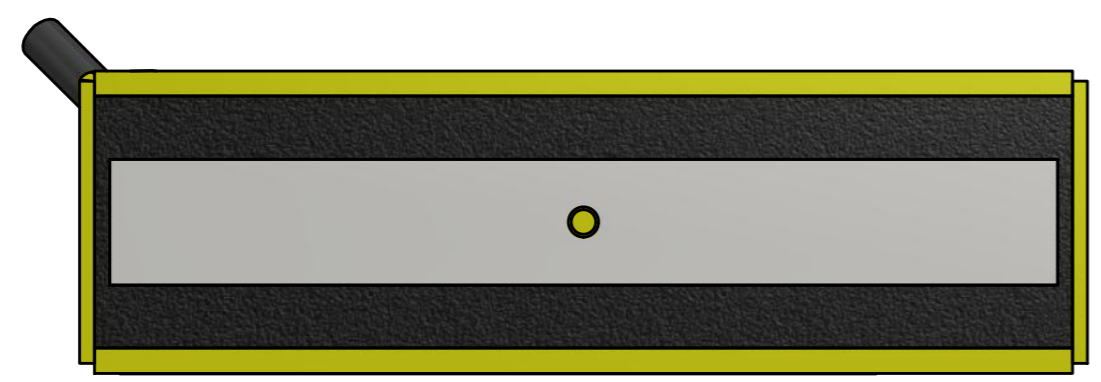
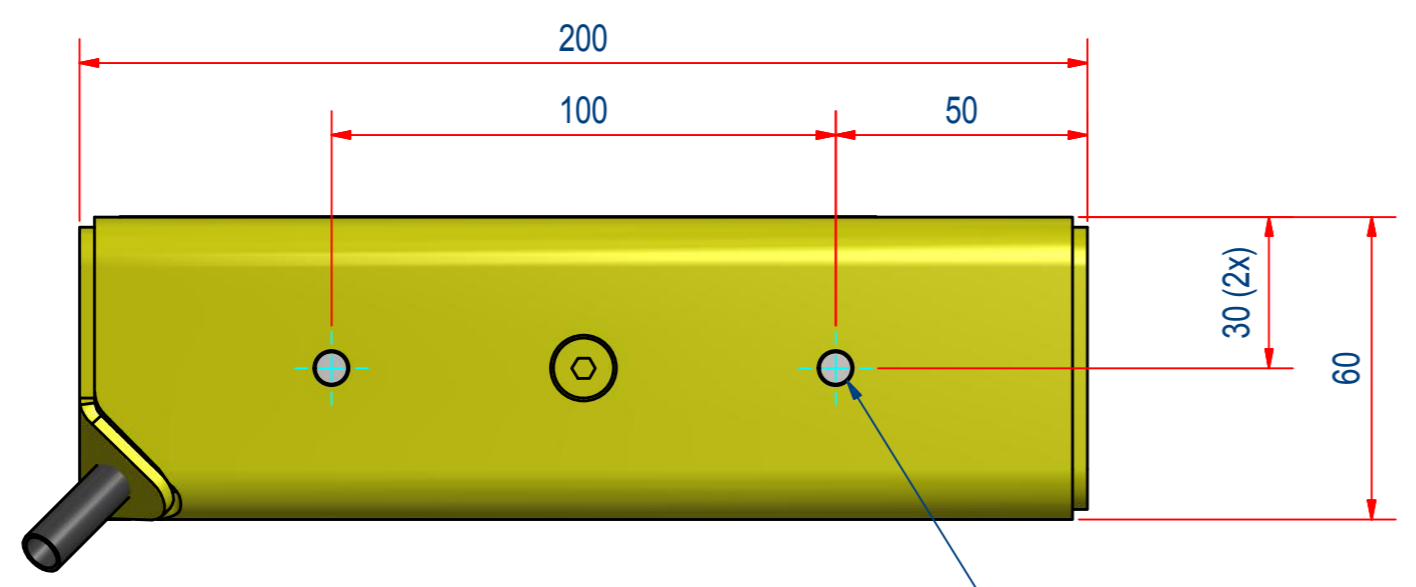


REV	DATE	BY	DESCRIPTION
-	6-5-2015	PB	ORIGINAL DRAWING



CABLE VMVL 2x1.5 L=5000  
NOT SHOWN



M8 (2x)



ITEM	QTY	PART NUMBER	DESCRIPTION	Dimensions
2	1	M59957	STICKER ELECTRO ROD	
1	1	E0033665	MACHINING ASSY EHKAA02000	
RAW MAT.	1			LENGTH (mm) WIDTH (mm)

Sheet: <b>A2</b>	Extra info: <i>Duty cycle 50% Max</i>	General tolerance: <b>ISO 2768- mK</b>
Drawn: <b>PB</b>	Weight (kg): <b>4,9</b>	Drawn according: <b>ISO268; ISO1101; ISO2553</b>
Date: <b>6-5-2015</b>		Status: <b>Standard</b>
Spare part: <b>False</b>		Customer reference number:
Quick search: <b>EHKAA0200</b>	<b>GOUDSMIT</b> MAGNETIC SYSTEMS	Document number: <b>E0033679</b>
Description: <b>HEB-060x60-0200-GC</b>	© All rights reserved. Reproduction is not permitted without written permission of GOUDSMIT Magnetic Systems BV	Doc.Rev: <b>-</b>
		Part number: <b>EHKAA02000</b>
		Rev: <b>-</b>