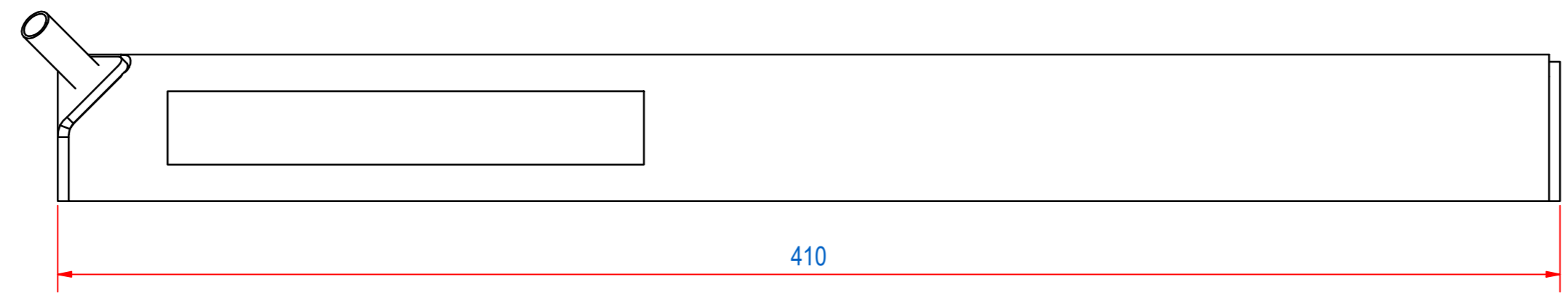
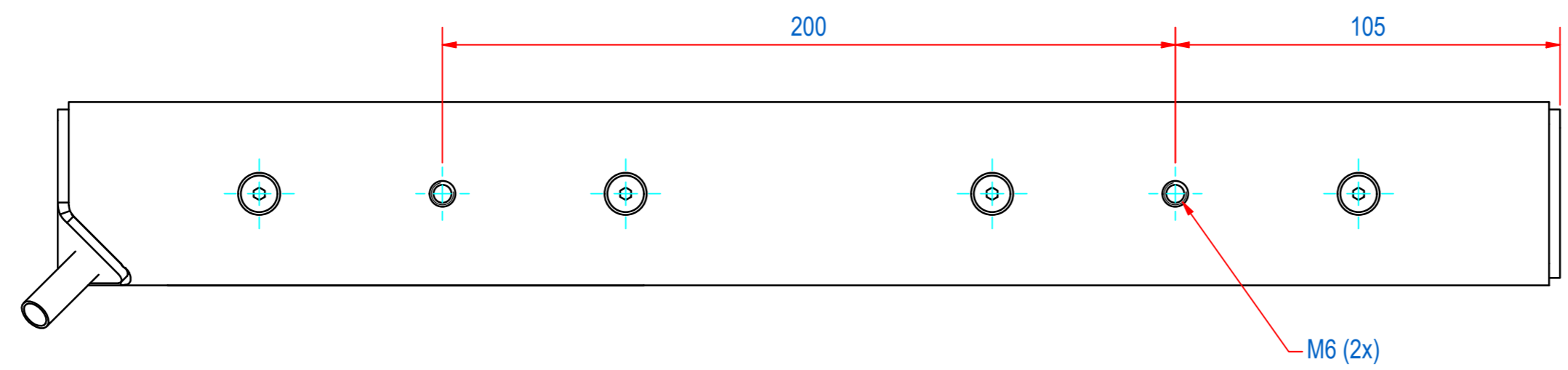
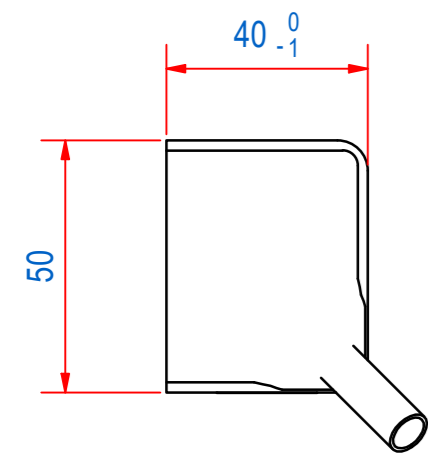
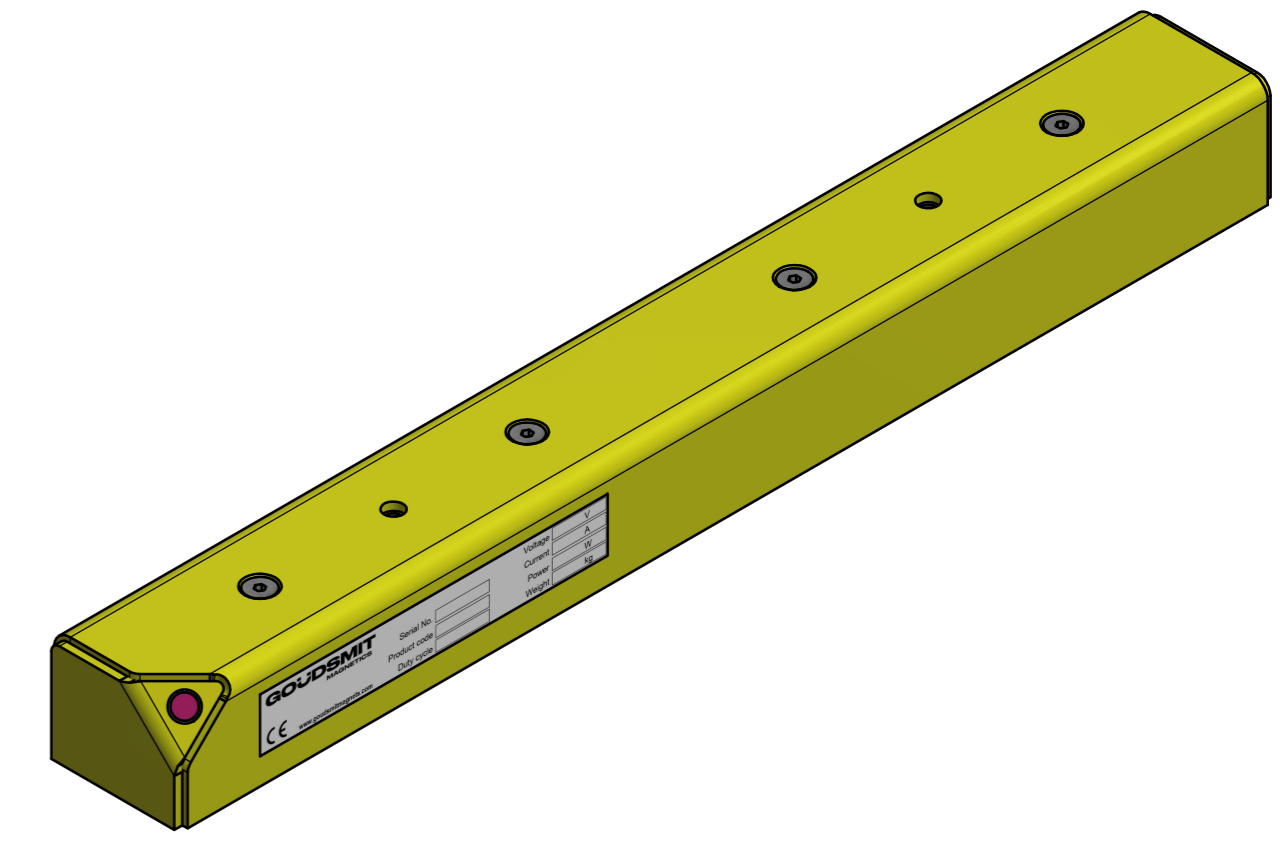
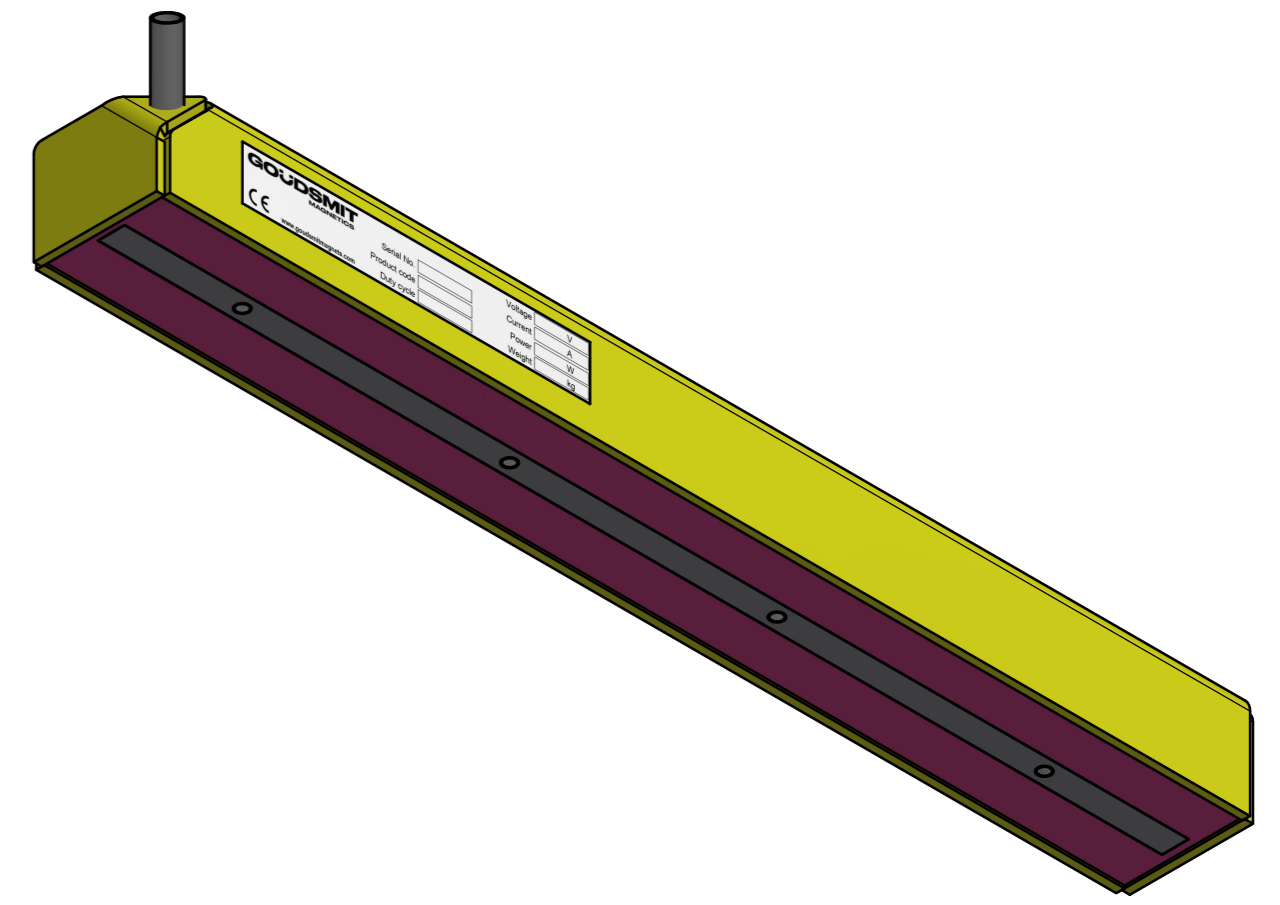


DOC.NR.	REV	DATE	BY	DESCRIPTION
	-	27-10-2017	GS	ORIGINAL DRAWING
EHKAE04100	A	14-7-2023	PB	CABLE 2x1 WAS 2x1.5



CABLE 2x1 L=5000 NOT SHOWN



ITEM	QTY	PART NUMBER	DESCRIPTION	Dimensions
2	1	M59957	HEB-STICKER ELECTRO ROD	
1	1	E0084843	HEB-ELECTRO ROD ASSY E L=410	
RAW MAT.	1			Length (mm) Width (mm)
Quantity		Material Number	Material Description	Length (mm) Width (mm)
Sheet: A2		Extra info: duty cycle; 50% , max 10 min. 36W, 1.4A		General tolerance: ISO 2768- mK
Drawn: GS		Weight (kg): 5,9		Drawn according: ISO286; ISO1101; ISO2553
Date: 26-10-2017		grommet on corner, 5m cable		Status: Standard
Spare part: False		Source:		Customer reference number:
Quick search: EHKAE				Document number: EHKAE04100 Doc.Rev: A
Description: HEB-050x40-0410-GC		© All rights reserved. Reproduction is not permitted without written permission of GOUDSMIT Magnetic Systems BV		Part number: EHKAE04100 Rev: A