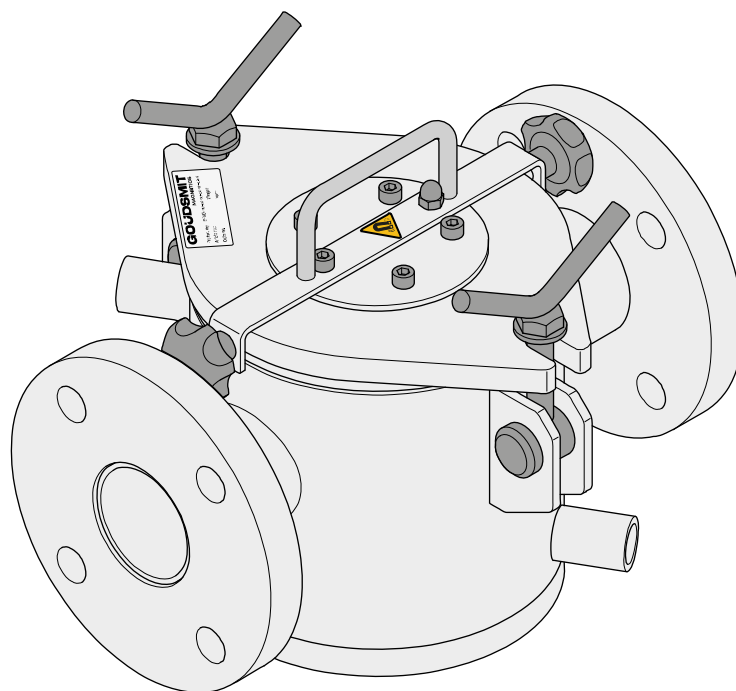


## Installation and user manual

Industrial double-walled magnetic filters, series SFND

**Permanent magnetic filter for viscous liquids in heated pressure pipes.**



© Copyright. All rights reserved.

## Table of contents

<b>1 Introduction</b> .....	<b>4</b>
<b>2 Safety</b> .....	<b>5</b>
2.1 Safety risks.....	5
2.2 General safety instructions.....	5
2.3 Damage due to magnetic field .....	5
2.4 Other remarks/warnings.....	5
<b>3 Standards and regulations</b> .....	<b>6</b>
3.1 Limit values for occupational and public exposure to permanent magnetic and electromagnetic fields.....	6
<b>4 Specifications</b> .....	<b>7</b>
4.1 Range of application .....	7
4.2 Description of function.....	7
4.3 Use in food product flows.....	7
4.4 Temperatures.....	7
4.5 Free space .....	7
4.6 ATEX (if applicable) .....	7
<b>5 Product information</b> .....	<b>8</b>
5.1 Overview drawing.....	8
5.2 Scope of delivery.....	8
5.3 Identification plate .....	8
5.4 Service life.....	9
5.5 Accessory.....	9
<b>6 Transport and installation</b> .....	<b>10</b>
6.1 Transport.....	10
6.2 Installation .....	10
<b>7 Operating principle</b> .....	<b>12</b>
7.1 General .....	12
7.2 Cleaning process – removal of ferromagnetic particles .....	12
<b>8 Maintenance and inspection</b> .....	<b>14</b>
8.1 General guidelines .....	14
8.2 Frequency of maintenance.....	14
8.3 Cleaning instructions.....	14
8.4 Flux density measurement of a magnetic bar .....	15
8.5 Replacing sealing ring.....	16
<b>9 Troubleshooting</b> .....	<b>17</b>
9.1 Troubleshooting table.....	17
<b>10 Service, storage and disassembly</b> .....	<b>18</b>
10.1 Customer service .....	18
10.2 Spare parts.....	18
10.3 Storage and disposal .....	18

## 1 Introduction

This manual contains information about correct use and maintenance of the device. The manual contains instructions that should be followed to prevent injury and serious damage and to ensure safe and problem-free operation of the device. Read this manual thoroughly and ensure that you fully understand everything before using the device.

If you need more information or still have questions, please contact Goudsmit Magnetic Systems B.V.. The contact details are provided on the title page of this manual. Additional copies of the manual can be ordered by providing the device description and/or article number as well as the order number.

The descriptions and figures in this manual, provided for explanatory purposes, may differ from the descriptions and figures of your version.

In this manual, the SFND double-walled magnetic filters magnetic grid is further referred to as “device”.



### NOTICE

**Read this manual carefully before installation and commissioning!**



### NOTICE

This manual and manufacturer's declaration(s) are to be considered part of the device.

Both documents must remain with this device if it is sold.

The manual must be available to all operating personnel, service technicians and others who work with the device throughout the life of the device.

## 2 Safety

### 2.1 Safety risks

This chapter describes the safety risks of the device. Where necessary, warning pictograms have been affixed to the device. These pictograms are explained later in this document.



#### NOTICE

Know your pictograms:

- ▶ Read the warning pictograms on the device carefully.
- ▶ Check that the pictograms on the device are present and legible at regular intervals.
- ▶ Keep the pictograms clean.
- ▶ Replace pictograms that have become illegible or that have been removed with new pictograms in the same locations.

### 2.2 General safety instructions

- The instructions in this manual must be complied with. If they are not, there is a risk of material damage, personal injury and even a danger of death.
- The device may only be used to filter powders and viscous liquids. Any other use is inconsistent with the regulations. Any resulting damage is not covered by the factory warranty.
- Ensure that people who work on the device or in its immediate vicinity wear adequate protective equipment.
- Impose additional safety measures and use additional warning pictograms if the device remains easily accessible to people. If this isn't possible, ensure that clear instructions are provided for the entire system in which this device is accommodated.
- Work on the device may only be carried out by qualified personnel. Ideally, maintenance work on the magnets should be carried out by Goudsmit Magnetismics personnel.
- Always take locally applicable safety and environmental regulations into account.

### 2.3 Damage due to magnetic field

The devices generate a powerful magnetic field that attracts ferromagnetic particles. This also applies to ferrous materials that may be carried on the person, including keys, coins and tools. When working within the magnetic field, use non-ferromagnetic tools and workbenches with a wooden worktop and non-ferromagnetic base.



#### WARNING

##### Strong magnetic field

There is a risk of personal injury when carrying out work and measurement checks on the device. Do not place the fingers or other body parts between the device and your structure.

### 2.4 Other remarks/warnings

Rectify all faults before operating the device. If the device is used whilst exhibiting a fault, after having completed a risk assessment, warn operating and maintenance personnel of the fault and the potential risks associated with that fault.

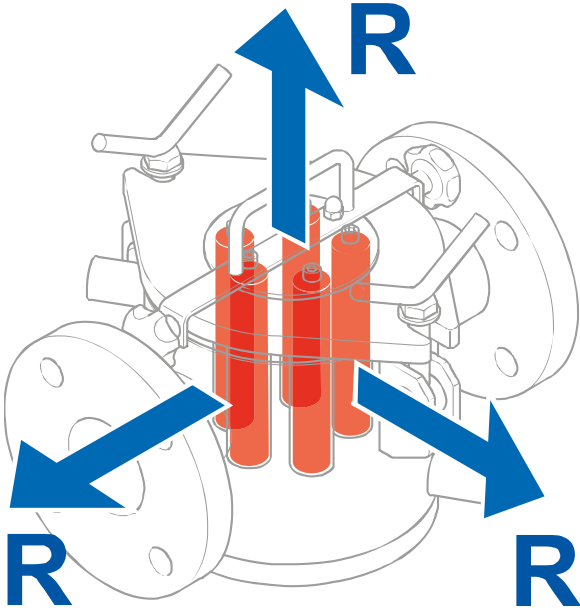
## 3 Standards and regulations

### 3.1 Limit values for occupational and public exposure to permanent magnetic and electromagnetic fields

The limit values and magnetic fields are defined in accordance with the EMC Directive 2013/35/EU as follows:

Directive 2013/35/EU of the European Parliament and of the Council of 26 June 2013 on the minimum health and safety requirements regarding the exposure of workers to the risks arising from physical agents (electromagnetic fields).

Observe the following measures in relation to exposure to magnetic fields in accordance with EN12198-1 (machine category = 0, no restrictions) of the device:



#### **Danger of death to people with implanted medical aids**

People with an active implanted medical aid (e.g. pacemaker, defibrillator, insulin pump) must not be present within a radius 'R' of 0.25 metres of the device.



#### **Damage to products with sensitivity to magnets**

Products that contain ferromagnetic parts, such as debit cards, credit or chip cards, keys and watches, may be rendered permanently damaged if they come within a radius 'R' of 0.10 metres of the device.



Employees who are pregnant and the general public may not come within a radius 'R' of 0.025 metres of the device.

Limit values for occupational exposure (general and for limbs) are not exceeded.



#### **NOTICE**

Goudsmit Magnetics offers an annual maintenance inspection, including replacement of the seal(s) and an inspection report with certificate for the magnets.

## 4 Specifications

### 4.1 Range of application

The device is suitable for many industrial applications where liquid mixtures are transported in pressure pipes at pressures of up to 10 bar. The design and grit-blasted finish are intended for use in applications where there is low risk of bacterial growth, such as melted chocolate. A hot liquid flowing through the double outer wall of the housing prevents solidification of the product.

For liquid products, we can calculate the exact pressure drop at these filters in your situation using our FEM software. The pressure drop depends on the physical properties of your product flow (viscosity) and its velocity. Contact us for additional assistance.

### 4.2 Description of function

The device filters fine ferromagnetic contaminants of 30 µm and larger – such as stainless steel wear particles – from viscous liquids that tend to solidify against a cold wall. The product must not contain any ferromagnetic particles large or heavy enough to cause damage to the magnetic bars. Maximum particle size is 10 mm.

- If necessary, place a strainer before the product inlet of the device in your installation.

### 4.3 Use in food product flows

The device is supplied in stainless steel with a 3 µm grit-blasted finish as standard. This is suitable for normal food contact applications. All contact materials are compliant with EU regulation EC1935/2004. Higher-quality finishes are available for applications with more stringent requirements.

### 4.4 Temperatures

The devices are suitable for the following ambient and product temperatures:

Magnet quality used	Ambient temperature	Max. product temperature
GSN-42SH	-20 to +60 °C	130 °C

The magnetic material must be protected against higher temperatures than those specified on the data sheet as the magnet will permanently lose magnetic force if exposed to higher temperatures.

### 4.5 Free space

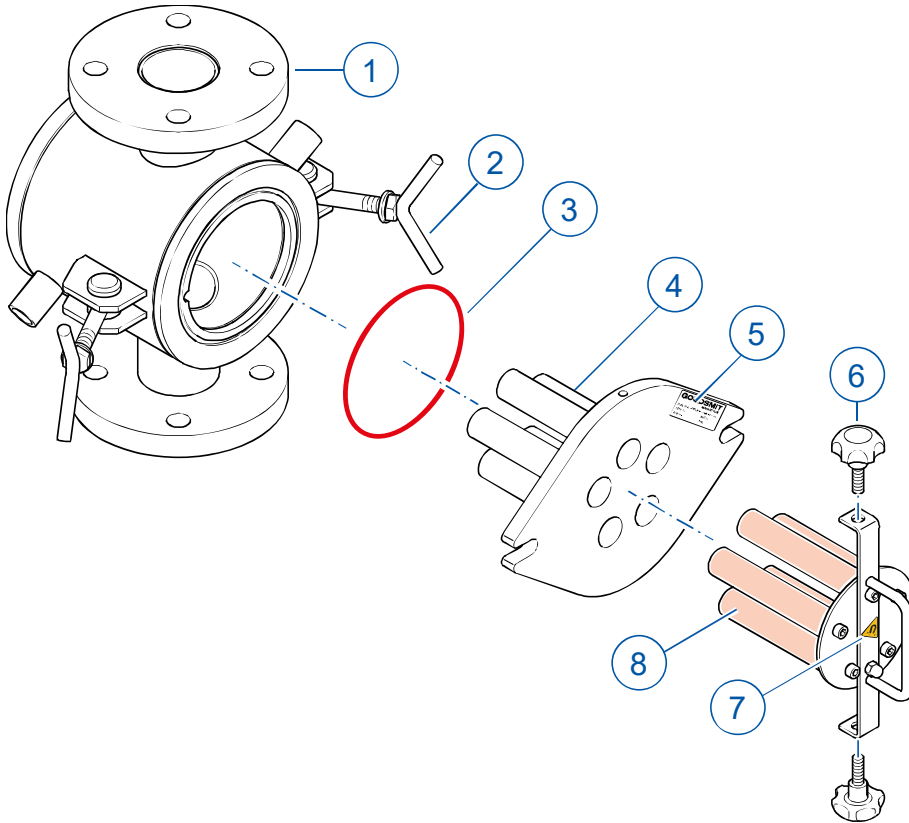
The recommended space required during installation, operation and maintenance of the installed unit is 1 metre at the front, ½ metre at the side and rear.

### 4.6 ATEX (if applicable)

The mechanical composition of the standard device is free from its own sources of ignition and thus falls outside the scope of the ATEX Directive 2014/34/EU. The full explanation is provided in the ATEX exclusion declaration.

## 5 Product information

### 5.1 Overview drawing



- |                          |                         |                      |
|--------------------------|-------------------------|----------------------|
| 1. Double-walled housing | 4. Extractor element    | 7. Warning pictogram |
| 2. Toggle                | 5. Identification plate | 8. Magnetic bar      |
| 3. Sealing ring          | 6. Screw button         |                      |

### 5.2 Scope of delivery

Check the shipment immediately upon delivery for:

- Possible damage and/or shortcomings as a consequence of transport. In the event of damage, ask the carrier for a transport damage report.
- Completeness.



#### NOTICE

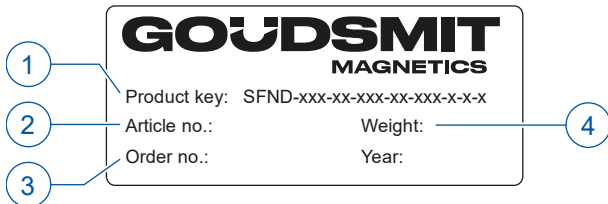
In the event of damage or incorrect shipment, contact Goudsmit Magnetics immediately. The contact details are provided on the title page of this manual.

### 5.3 Identification plate

The following identification data are shown on the device. The identification data are very important for maintenance of the device.

Always keep the identification data clean and legible. Always provide the article and order numbers when ordering spare parts, requesting service or reporting a malfunction.





- |                   |                  |
|-------------------|------------------|
| 1. Product key    | 3. Order number  |
| 2. Article number | 4. Device weight |

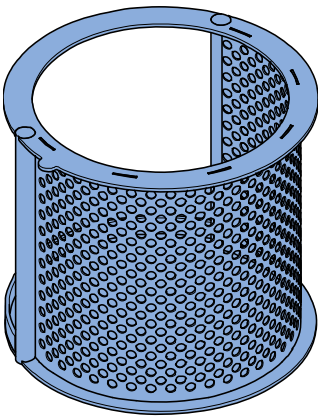
### 5.4 Service life

Depending on operating conditions, a service life of 5 - 15 years is expected for the magnet unit.

The extractor is considered a wear part. Depending on the product material passing through the pipe, the service life is 2 - 5 years.

### 5.5 Accessory

#### Sieve



The sieves are not only suitable for catching non-magnetic particles but also all other types of particles.

If larger product particles may enter the liquid product flow, due to cooling in the pipe system for example, it is advisable to install an additional sieve in the device.

The sieves are available with a mesh size of 2 – 5 mm.



#### NOTICE

On our website you will find a complete overview of all available accessories for these devices.

## 6 Transport and installation

### 6.1 Transport



#### WARNING

##### Note

The device permanently emits a magnetic force.

Observe the safety instructions for transport in the Safety risks [► 5] section.

- During transport, avoid all impact in order to prevent damage, especially to the magnetic bars. In the event of damage to the tubes, the magnet packs may not move in the tubes, or only move with difficulty.

### 6.2 Installation



#### NOTICE

Take the following precautions:

- ▶ Work safely, provide ample work space and use dependable scaffolding, ladders and other tools so the device can be installed without any risks.
- ▶ The device permanently emits a magnetic force. See the Safety risks [► 5] section for the precautions that must be taken when working on the device.
- ▶ Only qualified personnel should work on the device.
- ▶ Ensure that there is sufficient clearance around the installation to install the device in the installation/structure and for operation, inspection and maintenance work to be carried out.
- ▶ Ensure that no external vibration is transferred to the device, as this can cause permanent loss of magnetic force.
- ▶ Only non-magnetic structural parts are permitted within the range of the magnetic field in order to prevent a negative impact on the removal of ferrous particles. In simple terms, the magnetic field may not be 'short circuited'.
- ▶ Only use lifting/hoisting tools that are in good condition, and do not exceed the lifting capacity of the tools.
- ▶ The supply and discharge channels and structure must be sufficiently strong to bear the weight of the device with the captured ferrous particles.

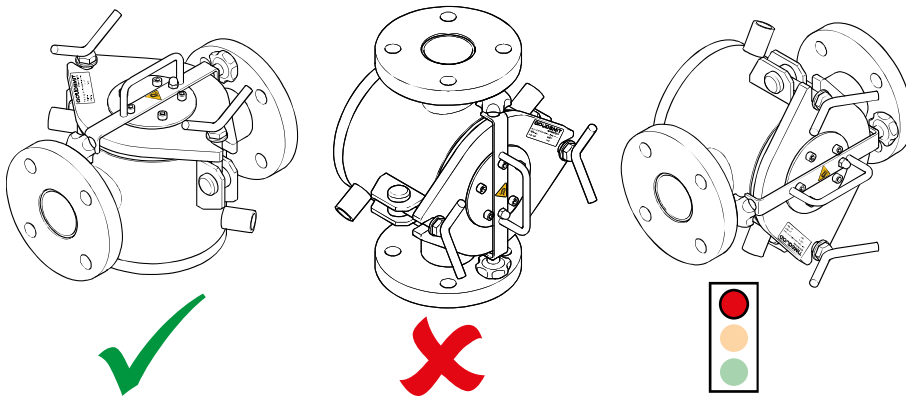


#### CAUTION

##### Risk of injury from edges and sharp corners

- ▶ Take particular care when carrying out work near sharp edges and pointed corners.
- ▶ Wear protective gloves if you are unsure.

- Install the device free of mechanical stress and at the correct working height in your product chute for the operating personnel. Mechanical stress on the device can cause deformation and other problems.



- Install the device in the horizontal orientation with the magnet unit at the top. If this is not possible, bear in mind when opening the lid that residue will run out during maintenance work (see figure).



**NOTICE**

Installing the unit in a manner other than specified for approval may cause damage to the extractor tubes.

- Use a suitable lifting/hoisting arrangement that supports the weight of the device.
- The devices are available with various flanges and couplings. Standard devices conform to EN1092-1. Follow the installation instructions in accordance with the relevant standards for the flanges and couplings to install the device in your installation. Misalignment or loose mounting can cause leakage.
- The double-walled version has standard ½" BSP threaded connections to which hoses or pipes for the heated circuit can be connected.
- Remove the lifting/hoisting arrangement after installation is complete.
- Place the magnetic insert back in the housing.
- Clean the device thoroughly before commissioning.

## 7 Operating principle

### 7.1 General

The magnet unit with very strong neodymium magnetic bars is located in the centre of the product flow. The product contaminated with ferromagnetic particles passes several magnetic bars as it flows through the filter.

The magnets attract passing ferromagnetic contaminants. The captured particles stick to the magnets, while the purified product flows on.

### 7.2 Cleaning process – removal of ferromagnetic particles

When cleaning the device, wear the requisite protective clothing, such as overalls, gloves, goggles and safety shoes.



#### CAUTION

##### Risk of burns from hot surface

Contact with hot parts may cause burns.

- ▶ Always wear protective work clothing and safety gloves when carrying out work near hot components.
- ▶ Make sure all components have cooled down to ambient temperature before carrying out any work.
- ▶ If applicable, apply additional warning pictograms for hot surfaces to the installation and device.



#### WARNING

##### Caution

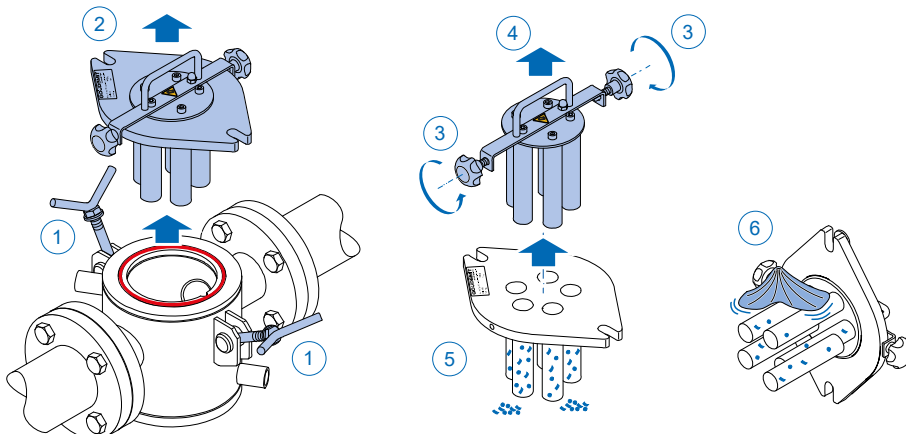
The product flow must be stopped when work is being carried out on the device.

Be careful when opening the device.

- ▶ Hot product may be released from the device when removing the magnet unit.
- ▶ There may be positive pressure in the pipes.

#### Cleaning process

Once the product flow is stopped, the entire magnet unit must be removed from the product chute. Then the magnetic bars must be pulled out of the extractor tubes, causing the ferromagnetic particles to fall off of the extractor tubes. For a viscous fluid, the magnet unit should be cleaned in the prescribed manner.



✓ To clean, proceed as follows:

- 1 Stop the product flow.
- 2 Loosen the toggles [1].
- 3 Remove the complete magnetic grid unit [2] from the housing and place it on a clean wooden or plastic surface.
- 4 Loosen the screw knobs [3] and remove the magnet unit [4] from the extractor element.
- 5 Collect the ferromagnetic particles that now fall off the extractor element and dispose of them [5].
- 6 Place the magnet unit away from the extractor element on a clean wooden or plastic surface.
- 7 Clean all parts with a soft, clean cloth [6] and – if necessary – with a suitable cleaning agent.
- 8 Reassemble all parts in reverse order.
- 9 Place the complete magnetic grid unit [2] back into the housing.
- 10 Tighten the toggles [1] again.
- 11 Production can be safely resumed.

## 8 Maintenance and inspection

### 8.1 General guidelines



**WARNING**  
**Risk of crushing**

In view of the large magnetic forces, replacing the internal magnet components is extremely dangerous as they are difficult to handle. Replacement may **ONLY** be carried out by appropriately qualified personnel or (ideally) by Goudsmit Magnetics technicians. If the replacement is carried out by unqualified personnel, the warranty will be void. Goudsmit Magnetics cannot be held liable for any consequential damage to people and/or materials if this prohibition is ignored.



**WARNING**  
**Caution**

The product flow must be stopped when work is being carried out on the device. Exercise caution with tools. The magnetic force is permanent.

Magnetic systems do not only attract ferromagnetic particles, but a small proportion of your product will also continue to 'adhere' to the magnet. Remove all captured particles from the magnet at regular intervals. A clean magnet is considerably more effective.

- Always inform operating personnel of scheduled inspections, maintenance, repairs and in the event of faults.
- Check regularly that all warning pictograms are still present in the correct locations on the device. If these are lost or damaged, replace them with new pictograms in the original locations immediately.
- Ensure that the device is externally clean. Remove dust, dirt and particles from the device as appropriate.

### 8.2 Frequency of maintenance



**NOTICE**

Goudsmit Magnetics offers an annual maintenance inspection, including replacement of the seal(s) and an inspection report with certificate for the magnets.

Action	Daily	Monthly	6 months
Clean magnetic bar tubes (for maximum performance) (► Cleaning instructions).	min. 2x <sup>1)</sup>		
Check sealing ring for wear and presence.	•		
Measure flux density of magnetic bars (► Flux density measurement of the magnetic bars).		•	
Check magnetic bar tubes for wear.		•	
Check the connections of the heated circuit.		•	
Replace sealing ring (► Replace seal ring).			•

<sup>1)</sup> The frequency of the cleaning process depends on the capacity of your product flow and the level of soiling.

### 8.3 Cleaning instructions

**Wet or dry cleaning**

If the use of fluids is prohibited in your installation, use disinfectant cloths that are suitable for contact with the processed product, if necessary.

The frequency of cleaning is dependent on the degree of cleanliness required for the processed product. The frequency of cleaning must be increased in applications where sensitive food products are processed. Perform a hygiene risk assessment to determine the requirements in your situation.

#### When used in food product flows

Cleaning and disinfectant methods and agents that are used for cleaning must be adapted to the specific type of soiling (carbohydrates, proteins, fats, etc.) and the degree of cleaning required for your application. The type of product that is processed thus determines to a large extent which combination of cleaning agents is suitable. Consult your cleaning agent supplier to select the correct cleaning agents for your specific situation.

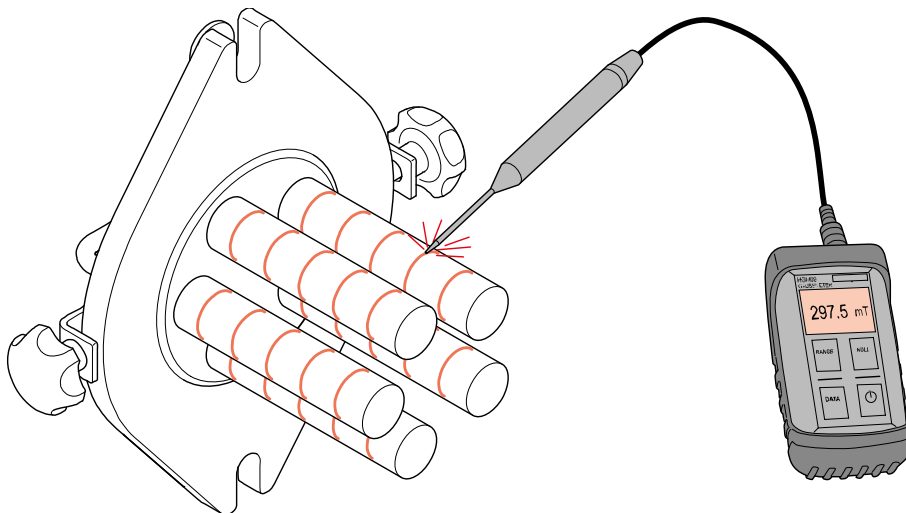
Check with your cleaning agent supplier whether the products are suitable for the material of the chosen seals (silicone, NBR or Viton).

The device is made of stainless steel or 'food-grade stainless steel' 1.4404/SAE 316L.

## 8.4 Flux density measurement of a magnetic bar

The magnetic bars must be measured at periodic intervals to check their magnetic flux density and to determine whether the magnetic force has reduced. Use a suitable gauss meter/tesla meter to measure the poles of the magnetic bar on the surface (the unit is tesla, gauss, kA/m or oersted).

Goudsmit Magnetics can perform magnet measurements on location, if desired. Proceed as follows:



- Stop the product flow.
- Loosen the toggles.
- Remove the complete magnetic grid unit from the housing and place it on a clean wooden or plastic surface.
- Loosen the screw knobs and remove the magnet unit from the extractor element.
- Place the extractor element away from the magnet unit.
- Clean the magnet unit with a soft, clean cloth and, if necessary, a suitable cleaning agent.
- Using the gauss meter/tesla meter, move along the poles [1] of the magnetic bar.

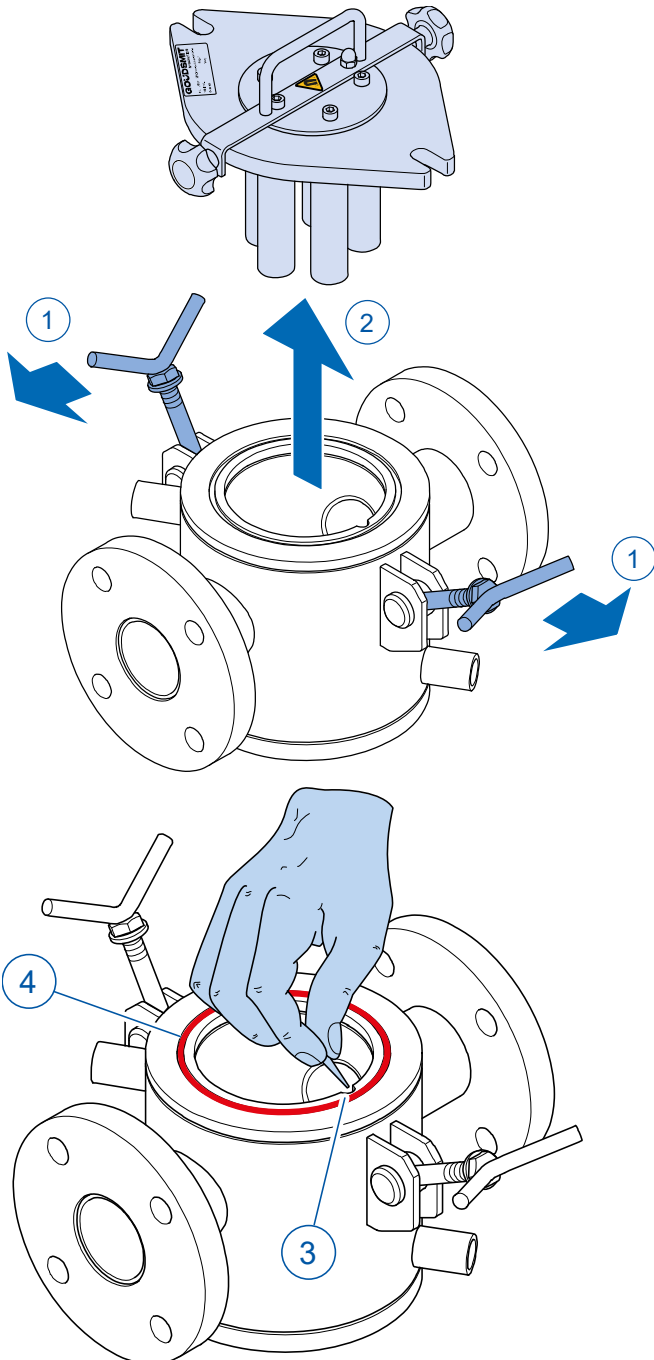
The measured values may fluctuate for various reasons, such as the position (angle) of the probe on the magnetic bar tube, the thickness of the probe and the reproducibility of the measurement.

- Record the highest measured value.
- Using the accompanying data sheet, check whether the measured value falls within the permitted value of the peak value.
- Reassemble all parts in reverse order.
- Place the complete magnetic grid unit back in the housing.
- Secure the toggles.
- Production can now be safely resumed.

## 8.5 Replacing sealing ring

We recommend replacing the sealing ring at least every six months or more frequently, depending on the level of wear.

To replace the sealing ring, proceed as follows:



- Stop the product flow.
- Loosen the toggles [1].
- Remove the complete magnetic grid unit from the housing [2].

- Remove the old sealing ring from the housing. In doing so, make use of the notch in the groove [3].
- Thoroughly clean the groove in which the sealing ring was seated, and fit a new sealing ring [4].
- Place the complete magnetic grid unit back in the housing.
- Secure the toggles.
- Production can now be safely resumed.

If the sealing rings wear out too quickly, e.g. due to too high temperature or too abrasive product, enquire about alternative sealing rings.



## 9 Troubleshooting

### 9.1 Troubleshooting table

Use the following table to search for faults, determine the possible cause and find the remedy. In the event of a fault that is not in the table, contact Goudsmit Magnetics customer service.

Problem	Possible cause	Solution
The device does not separate ferromagnetic particles completely or at all.	The magnetic bar is overloaded with ferromagnetic particles.	<ul style="list-style-type: none"> <li>Remove the captured particles from the magnetic bar (more frequently).</li> <li>Use a permanent magnet to check whether the separated particles are ferromagnetic.</li> </ul>
	Particles that are not attracted are not sufficiently ferromagnetic.	<ul style="list-style-type: none"> <li>Check the magnetic behaviour of the installed parts around the magnets by holding an iron part close to the magnets. If there are parts that react to the magnet, replace them with non-magnetic parts, such as those made from stainless steel.</li> </ul>
Leakage of product material.	Sealing ring is not seated properly in the groove.	<ul style="list-style-type: none"> <li>Fit the sealing ring in the groove properly.</li> </ul>
	Sealing ring is worn.	<ul style="list-style-type: none"> <li>Replace the sealing ring.</li> </ul>
Magnet unit binds in extractor element.	Dents in the extractor tubes.	<ul style="list-style-type: none"> <li>Remove the dents from the extractor tubes.</li> <li>Contact Goudsmit Magnetics.</li> </ul>

## 10 Service, storage and disassembly

### 10.1 Customer service

Have the following information to hand when contacting customer service:

- Data from the identification plate.
- Type and scope of the problem.
- Presumed cause.

### 10.2 Spare parts

Spare parts are usually parts that are subject to wear. These include:

- sealing ring (various types available)

It is recommended to replace the sealing ring every six months.

- Magnetic bars
- Extractor element

How quickly the sealing rings wear will depend on your product and how abrasive it is, as well as the capacity of your product flow. Several types of sealing rings are available for this device. See the data sheet for the precise specifications. Please get in touch with us for information on the availability of the sealing rings.

- When ordering, state the article and order numbers that appear on the identification plate.
- For further information, please contact us by +31 (040) 22 13 283 or consult our website.

### 10.3 Storage and disposal

#### Storage

If you do not intend to use the magnet product for an extended period of time, we recommend placing the device in a dry, safe place, and applying preservative to the vulnerable parts, if necessary.

#### Disposal/recycling

When dismantling and/or scrapping the magnet product, keep in mind the materials from which the individual parts are made (magnets, iron, aluminium, stainless steel, etc.). This should ideally be done by a specialized company. Always observe the local regulations and standards pertaining to industrial waste disposal.

Inform those disposing of or storing the magnet material of the hazards of magnetism. To this end, see also the Safety risks [▶ 5] section.



