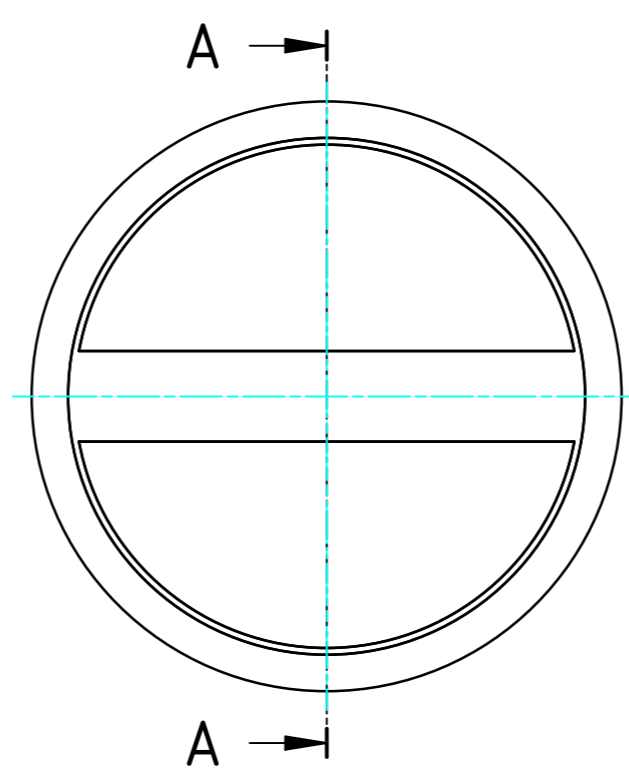
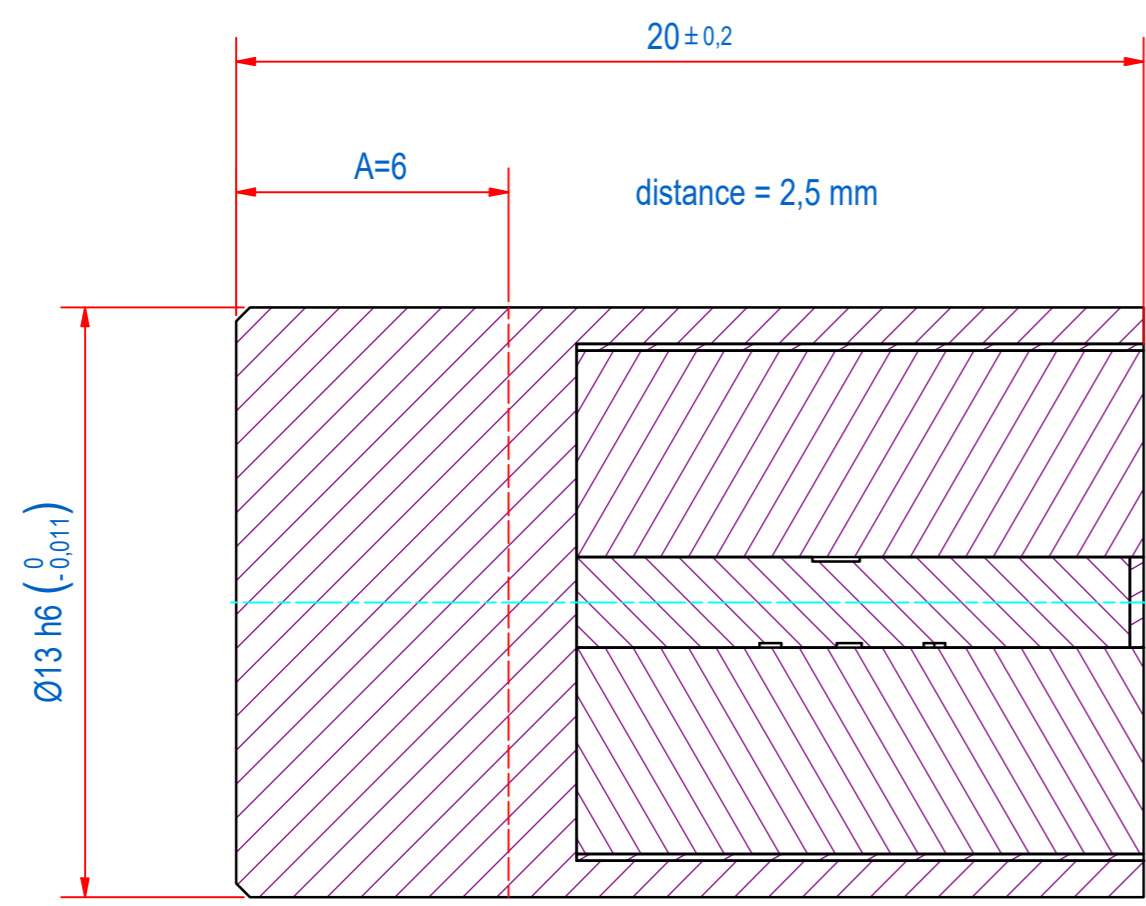
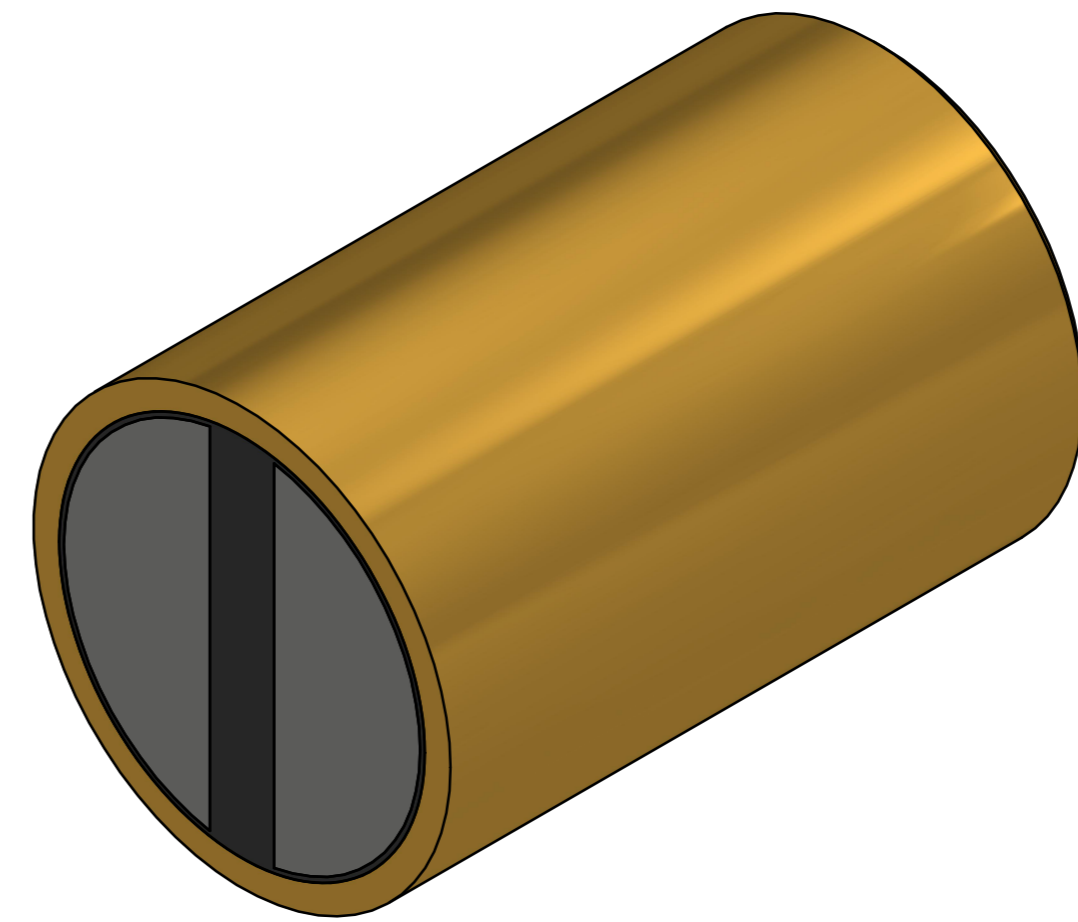
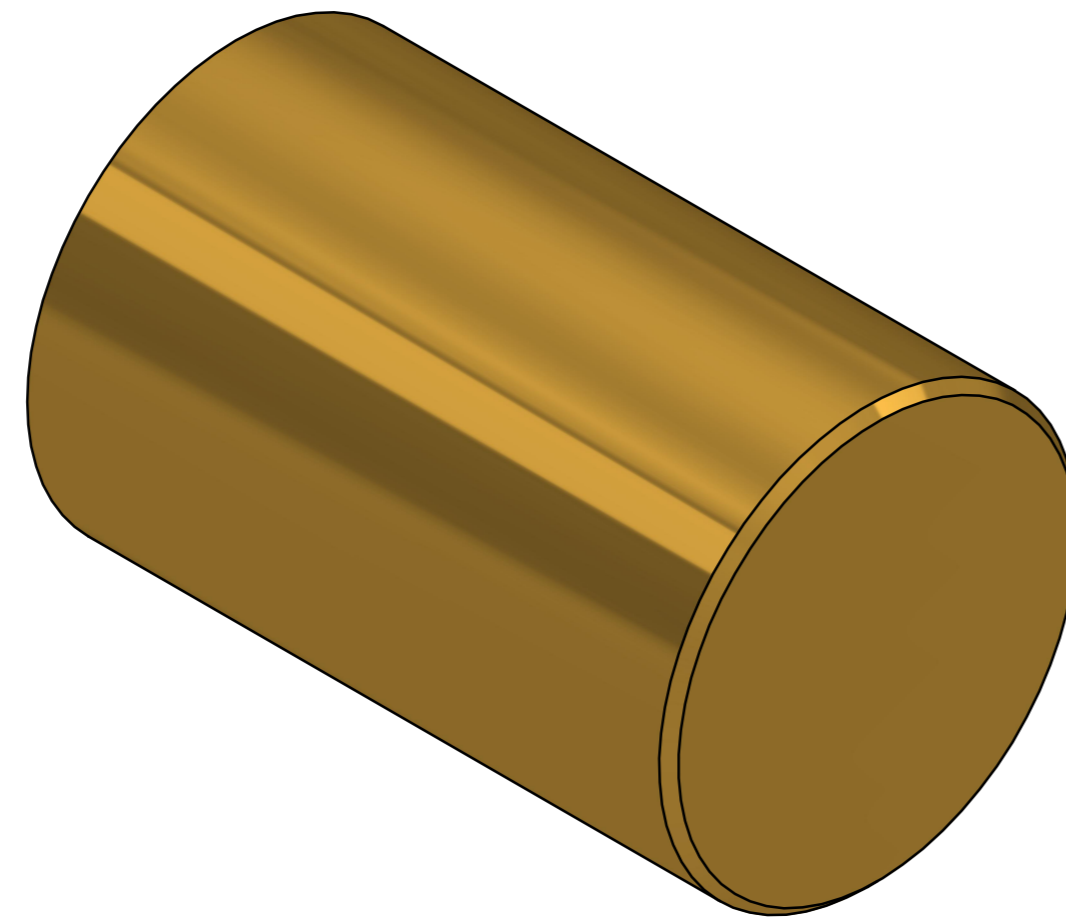


DOC.NR.	REV	DATE	BY	DESCRIPTION
GM17004	-	27-9-2019	PV	ORIGINAL DRAWING



DIRECT MOUNTING OF THE BAR MAGNET IN IRON REDUCES THE HOLDING FORCE BY UP TO 15% DUE TO MAGNETIC SHORT-CIRCUITING. TO AVOID THIS, CERTAIN DISTANCES SHOULD BE MAINTAINED BETWEEN THE BRASS CASING OF THE BAR MAGNET AND THE IRON. THE DISTANCES SHOULD ALSO BE OBSERVED IF THE BAR MAGNET IS SHORTENED WITH DIMENSION A. PLEASE REFER TO THE DISTANCE IN THE DRAWING (distance mm).

A-A

RAW MAT.	1	Quantity	Material Number	Material Description	Length (mm)	Width (mm)
Drawn:	PV	Weight (kg):	0,021	Extra info:	POT MAGNET SAMARIUM-COBALT	
Date:	6-9-2019	General tolerance:	ISO 2768- mK			
Spare part:	False	Drawn according:	ISO268; ISO1101; ISO2553			
Quick search:	POTGM	Status:	Standard			
Description:	PM-BA-S-BR-D13h6x20			Customer reference number:		
		Document number:	GM17004		Doc.Rev:	-
		Part number:	GM17004		Rev:	-



© All rights reserved. Reproduction is not permitted without written permission of GOUDSMIT Magnetic Systems BV