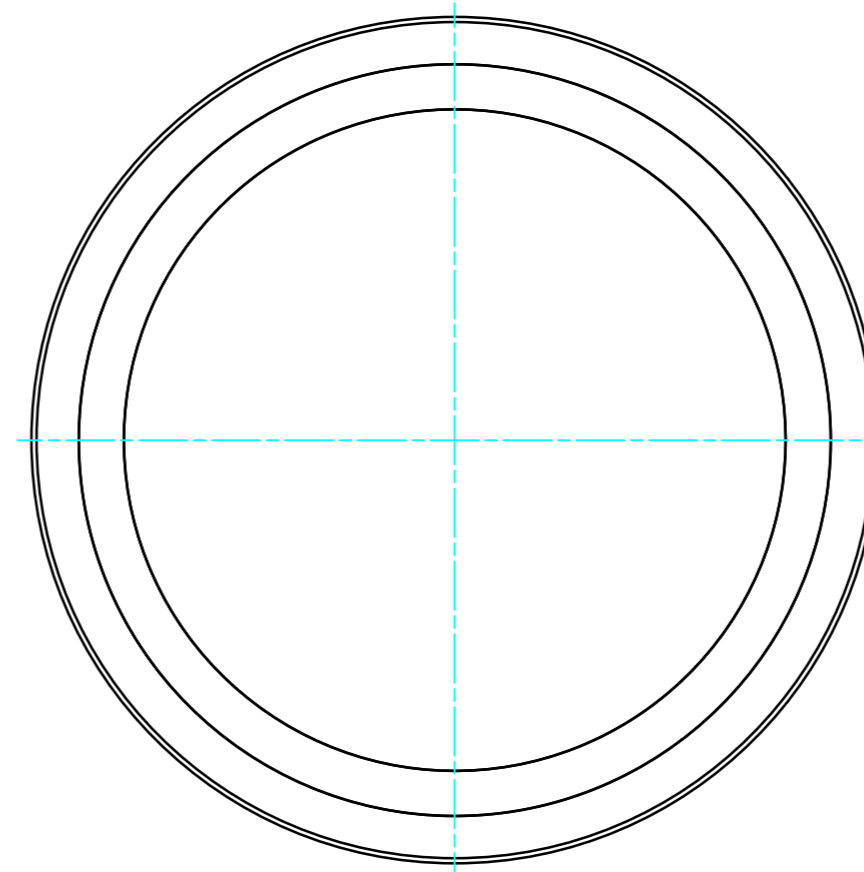
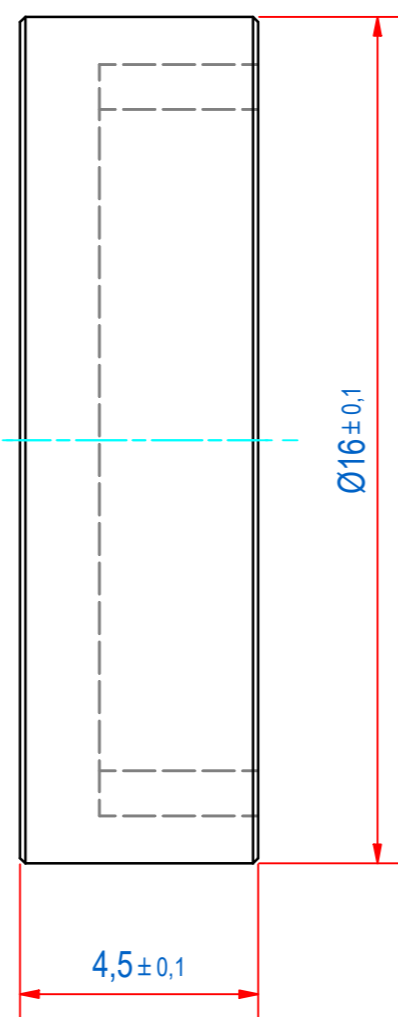
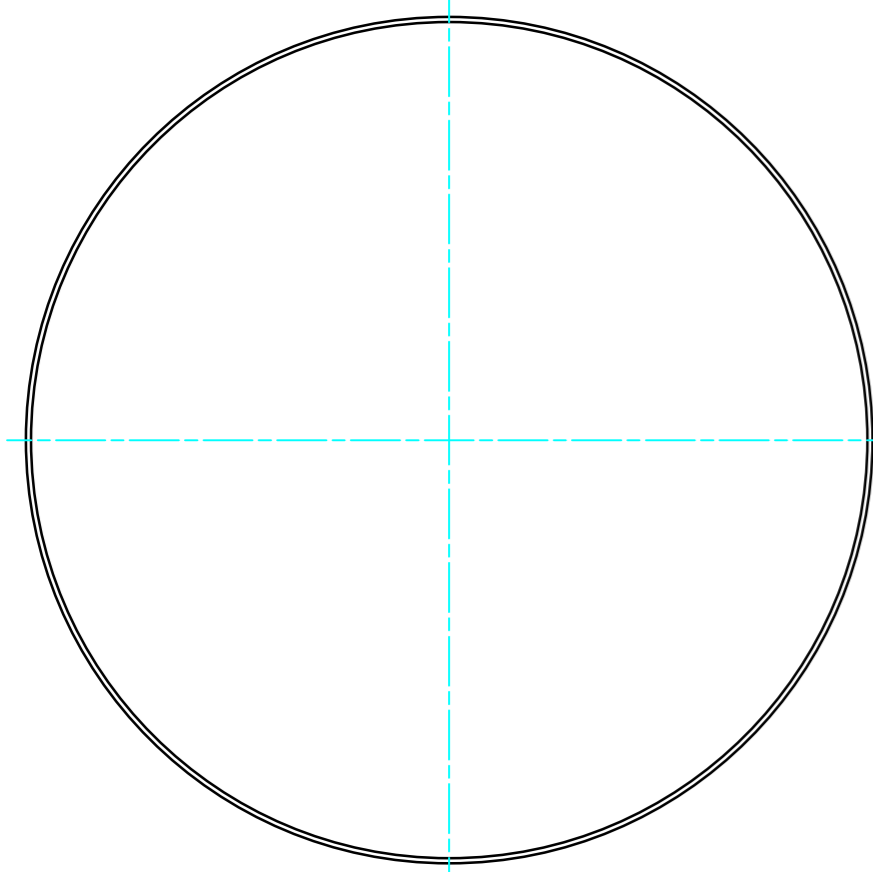
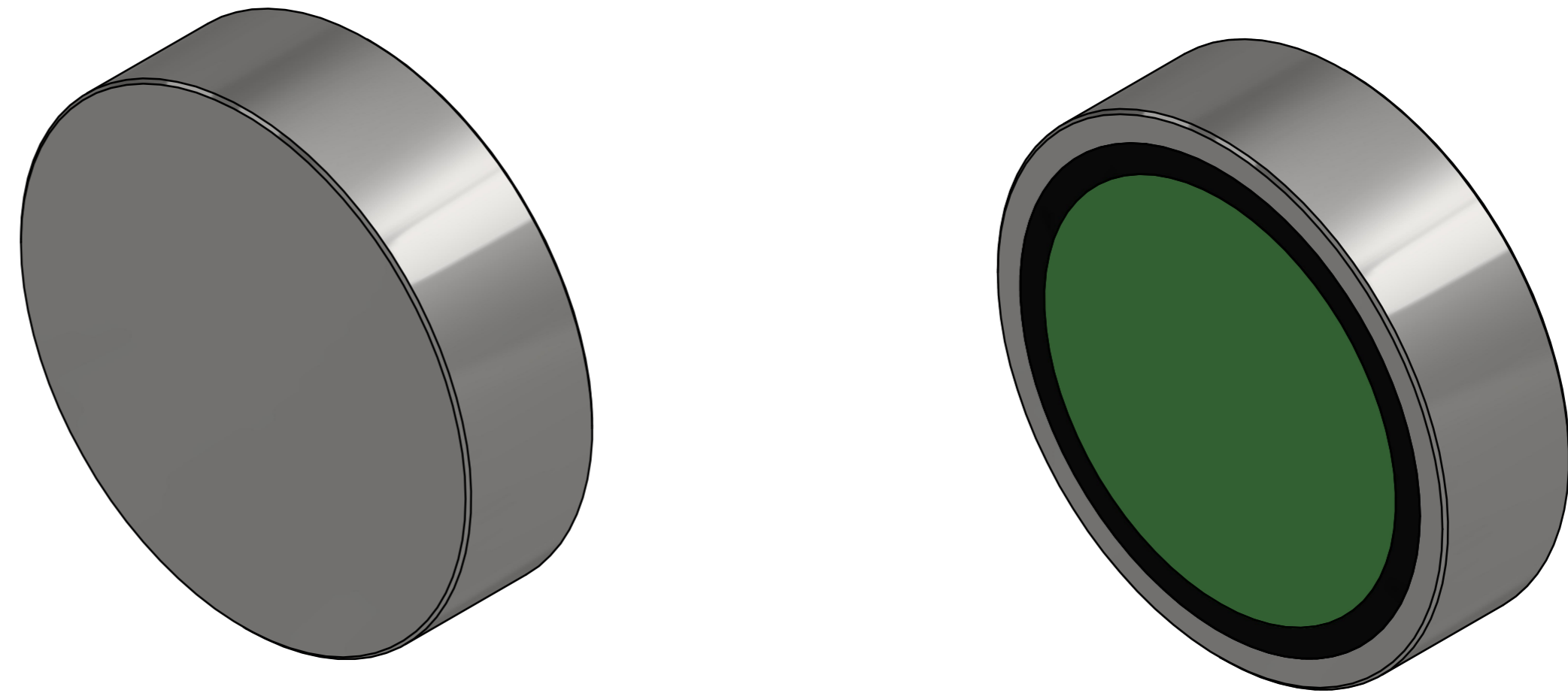


DOC.NR.	REV	DATE	BY	DESCRIPTION
E0119254	-	30-9-2019	PV	ORIGINAL DRAWING



SURFACE TREATMENT: ZINC PLATED

RAW MAT.	1	Quantity	Material Number	Material Description	Length (mm)	Width (mm)
Drawn:	PV	Sheet:	A2	Extra info: POTMAGNET SAMARIUM-COBALT	General tolerance: ISO 2768- mK	
Date:	19-7-2019	Weight (kg):	0,006		Drawn according: ISO268; ISO1101; ISO2553	
Spare part:	False	Source:			Status:	Standard
Quick search:	POTGM	© All rights reserved. Reproduction is not permitted without written permission of GOUDSMIT Magnetic Systems BV		Document number:	E0119254	Doc.Rev:
Description:	PM-BA-S-SG-D16x4.5			Part number:	GM17105	Rev: