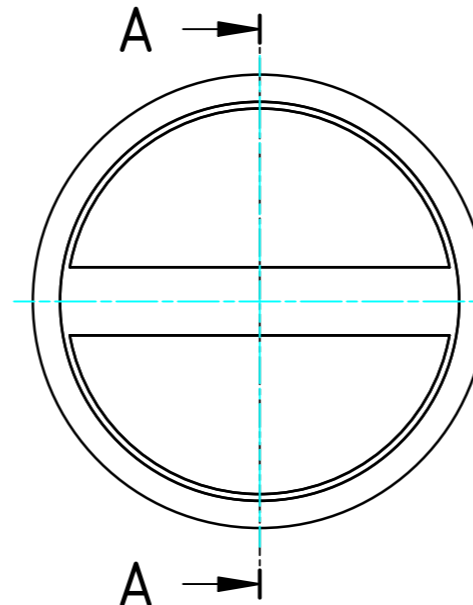
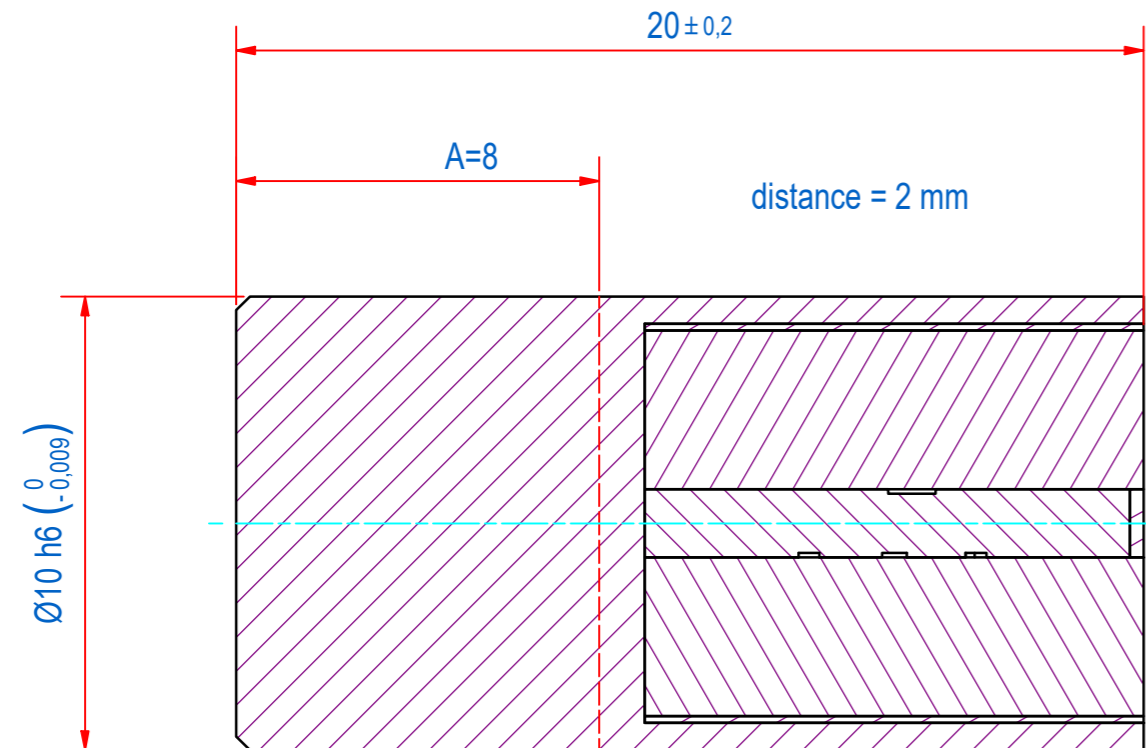
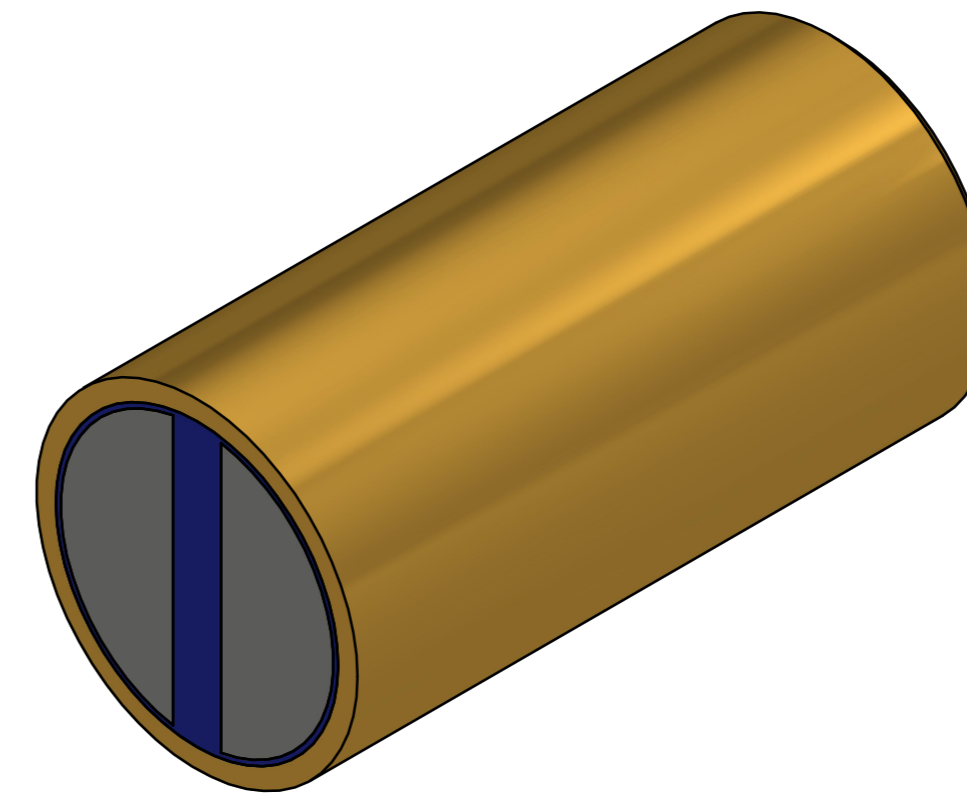
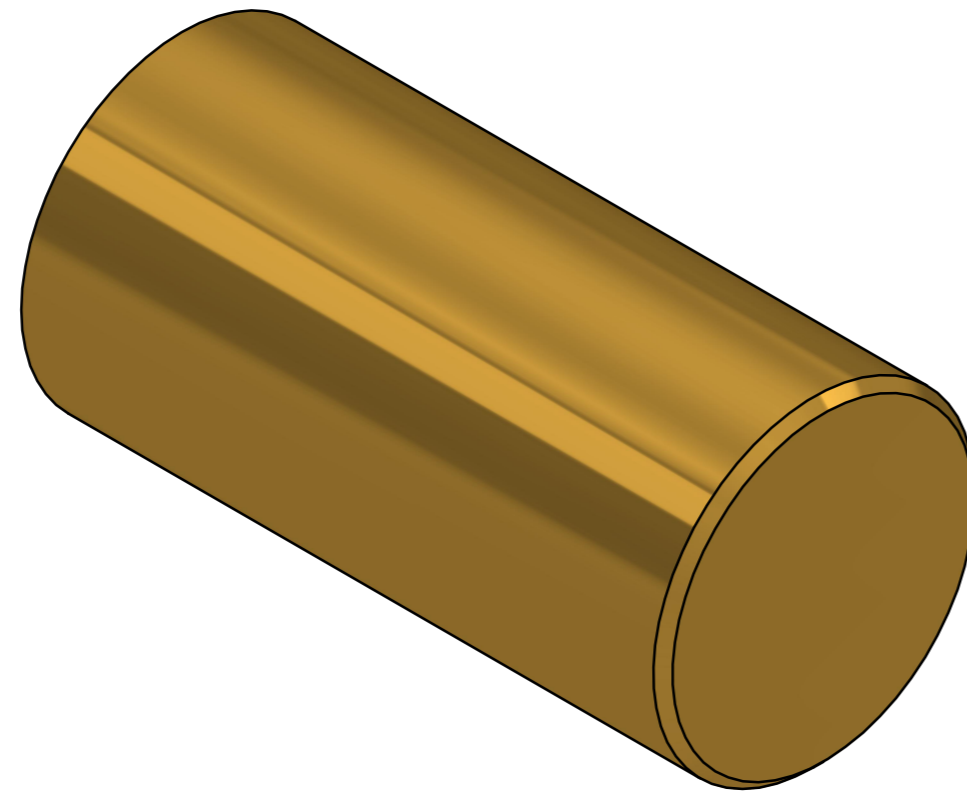


DOC.NR.	REV	DATE	BY	DESCRIPTION
GM17303	-	30-9-2019	PV	ORIGINAL DRAWING



A-A

DIRECT MOUNTING OF THE BAR MAGNET IN IRON REDUCES THE HOLDING FORCE BY UP TO 15% DUE TO MAGNETIC SHORT-CIRCUITING. TO AVOID THIS, CERTAIN DISTANCES SHOULD BE MAINTAINED BETWEEN THE BRASS CASING OF THE BAR MAGNET AND THE IRON. THE DISTANCES SHOULD ALSO BE OBSERVED IF THE BAR MAGNET IS SHORTENED WITH DIMENSION A. PLEASE REFER TO THE DISTANCE IN THE DRAWING (distance .... mm).

RAW MAT.	1	Quantity	Material Number	Material Description	Length (mm)	Width (mm)
Sheet:	A2	Extra info:	POT MAGNET NEODYMIUM		General tolerance: ISO 2768- mK	
Drawn:	PV	Weight (kg):	0,012		Drawn according: ISO268; ISO1101; ISO2553	
Date:	30-8-2019	Quick search:	POTGM		Status: Standard	
Spare part:	False	Source:			Customer reference number:	
Description:	PM-BA-N-BR-D10h6x20				Document number:	Doc.Rev:
					E0121768	-
					Part number:	Rev:
					GM17303	-