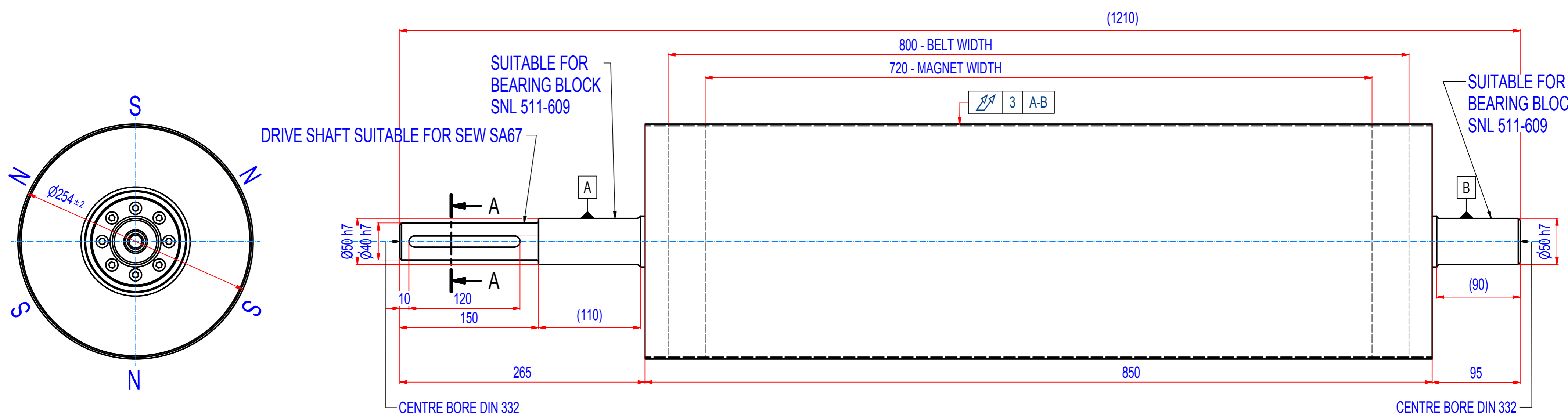


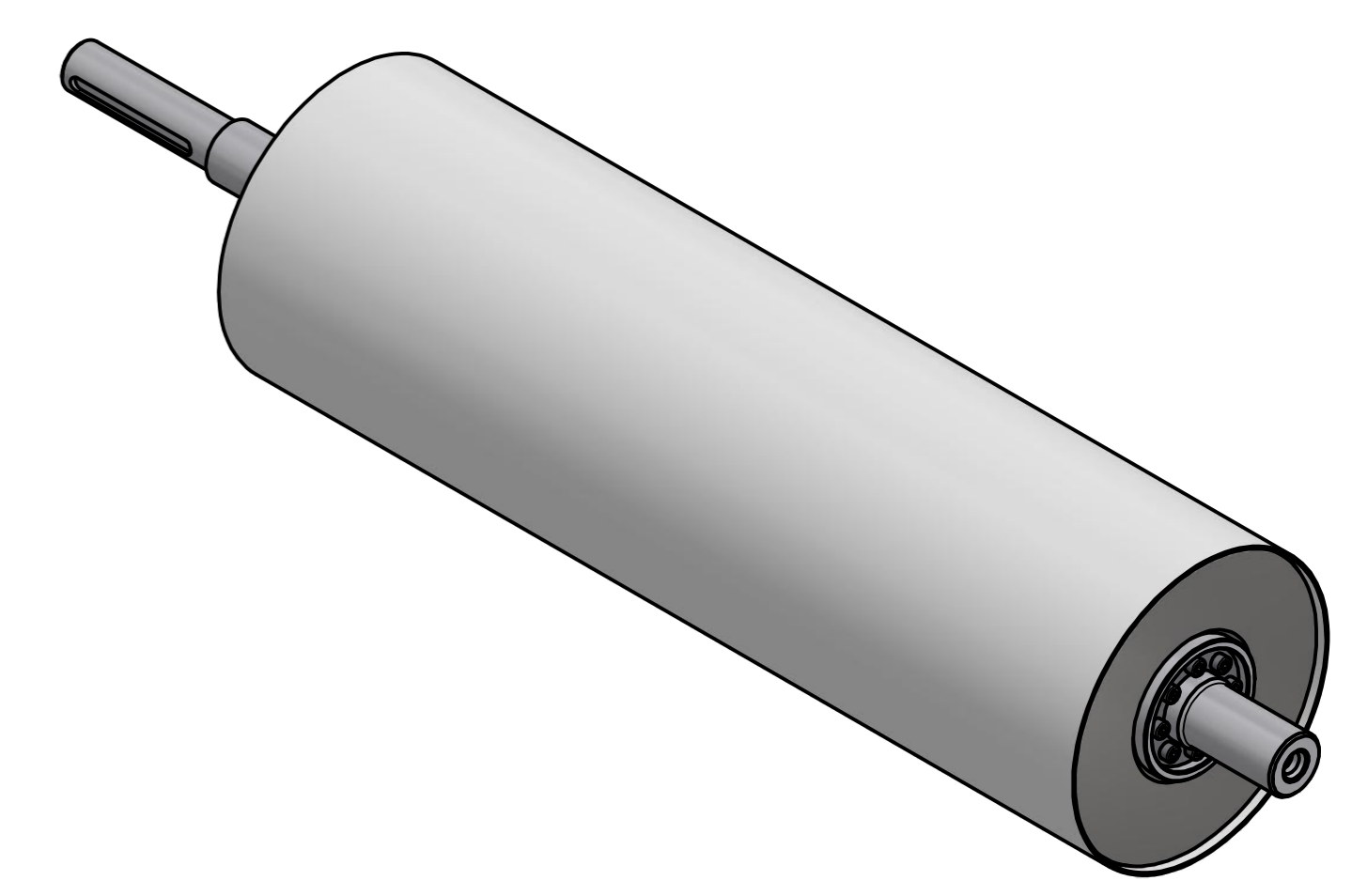
REV	BY	DATE	DESCRIPTION
A	JDL	13.2.2013	ORIGINAL DRAWING
B	PH	9.11.2016	NEW STANDARD LENGTH (850 mm)



SPECIFICATIONS

- SUITABLE FOR BELT WIDTH: 800 mm
- MAGNET TYPE: Ferrite
- NUMBER OF POLES: 6
- SURFACE MAG. INTENSITY: 1800 Gauss
- SHAFT TYPE: REMOVABLE SHAFT, EQUIPPED WITH CLAMPING BUSHES
- OVERALL WEIGHT: 178 kg
- CROWNING: NO
- RUBBER LAYER: NO

IF NOT SPECIFIED ON DRAWING, LINEAR DIMENSION TOLERANCES PER ISO 2768-1 CLASS C, GEOMETRICAL TOLERANCES PER ISO 2768-1 CLASS L



POZ./POS.	Č. SOUČÁSTI/ PART NUMBER	POPIS / DESCRIPTION	HMOT./ WEIGHT
1	A608_000000	RHAF25080000	177,6

Sheet: A2 Drawn: EN Date: 31.10.2018 Predecessor: RHAF25065001 Quick search: XRHR D254 Description: Magnetic headroller, Ferrite, D254 - W850	Extra info: © All rights reserved. Reproduction is not permitted without written permission of GOUDSMIT Magnetic Systems BV	General tolerance: ISO 2768 - cL Drawn according: ISO268; ISO1101; ISO2553 Status: Customer reference number: Product key: RHP-F254A06-080-RSD-BA Part number: RHAF25080000 Rev: B
--	--	--