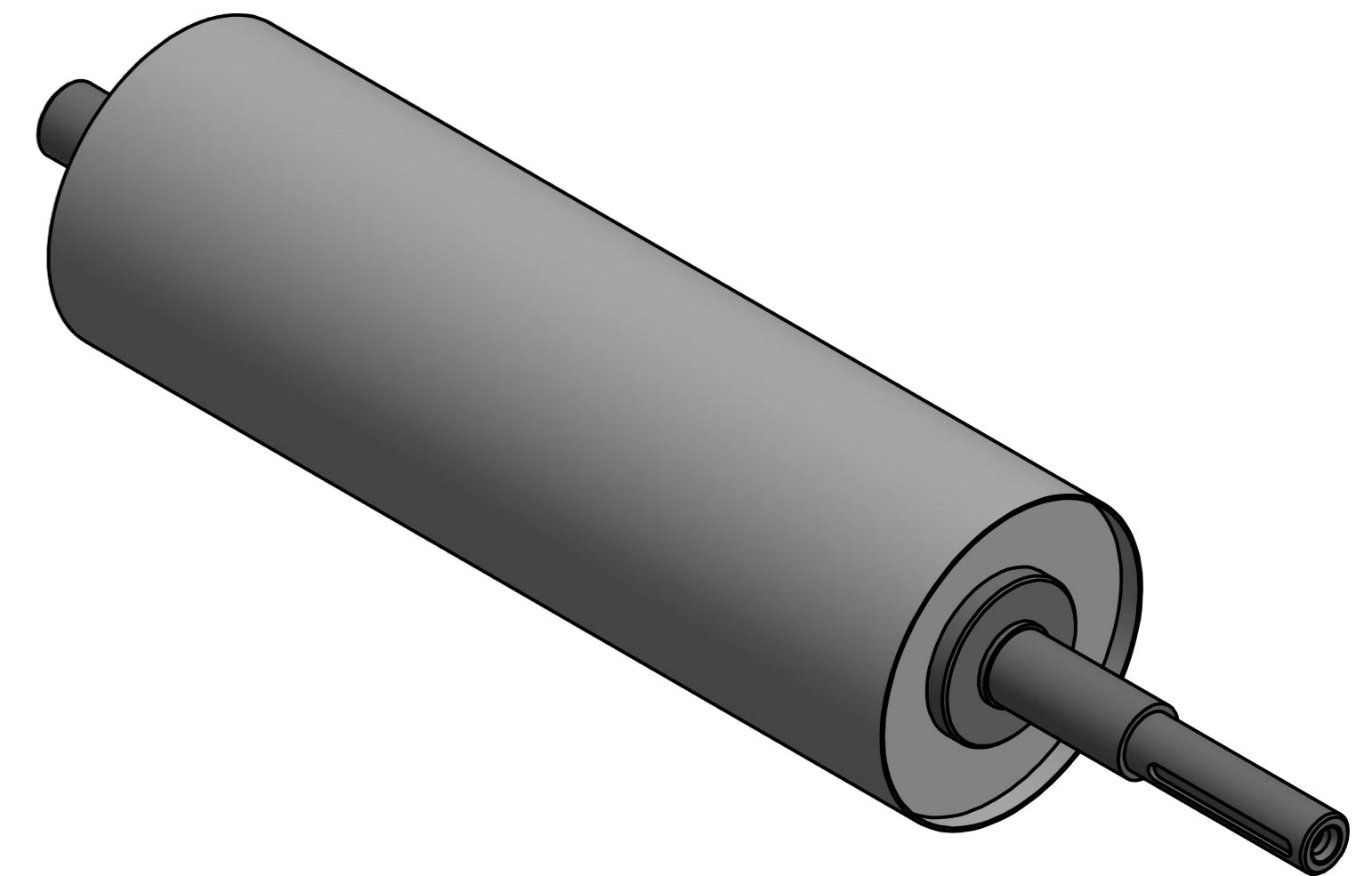
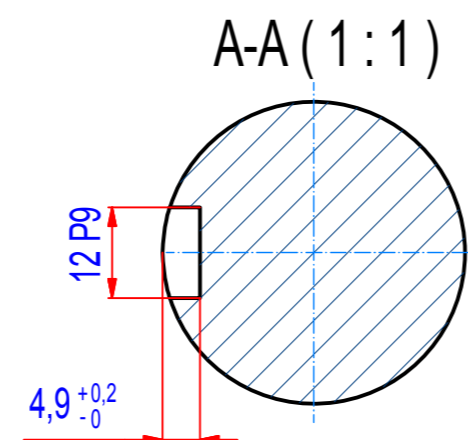
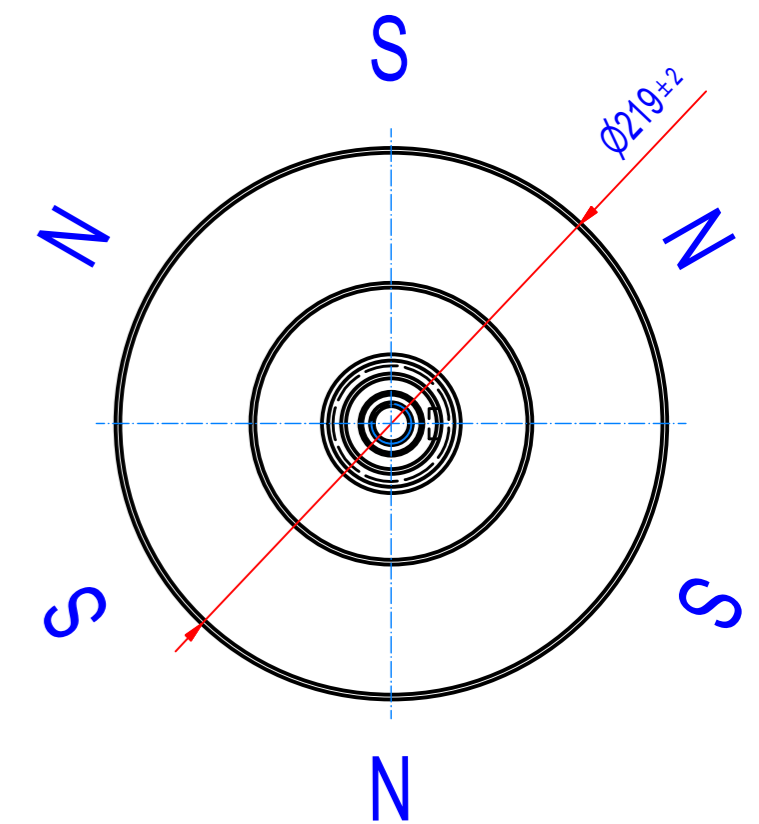
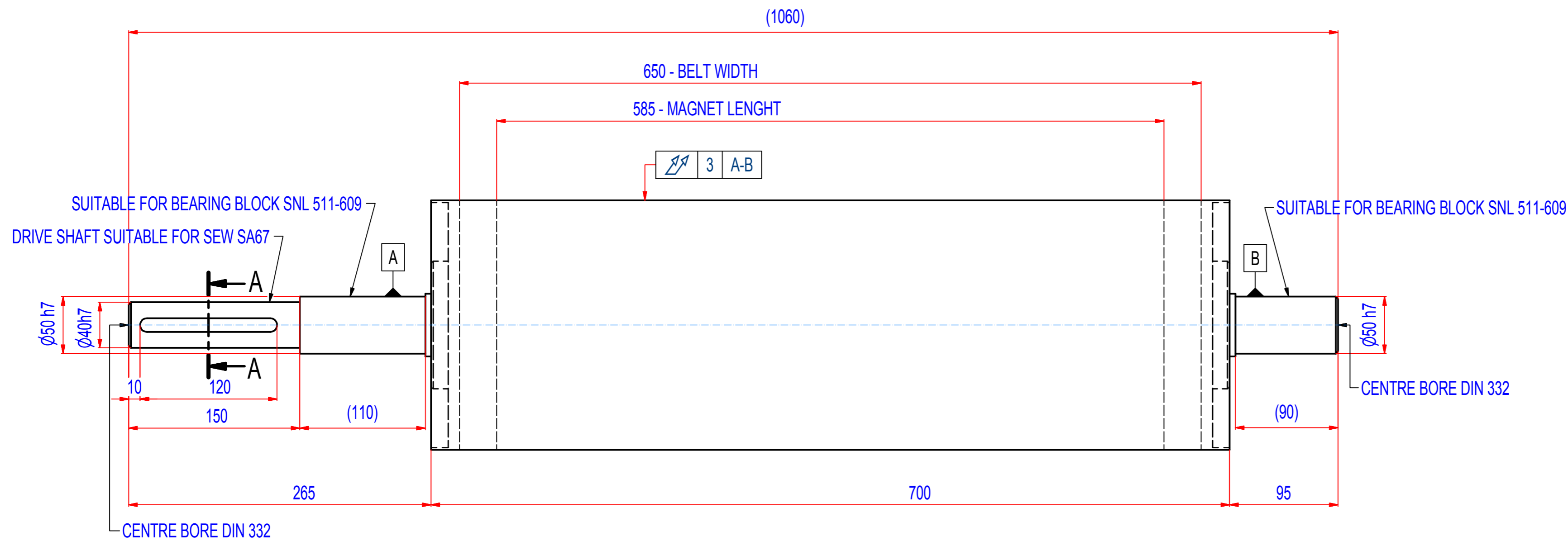


REV	BY	DATE	DESCRIPTION
A	JDL	22.2.2013	ORIGINAL DRAWING
B	PH	16.11.2016	CHANGE LENGHT - NEW STANDARD(700mm)



SPECIFICATIONS

SUITABLE FOR BELT WIDTH: 650 mm

MAGNET TYPE: NdFeB

NUMBER OF POLES: 6

SURFACE MAG. INTENSITY: 3200 Gauss

SHAFT TYPE: REMOVABLE, EQUIPPED WITH CLAMP BUSHINGS

OVERALL WEIGHT: 98 kg

CROWNING: NO

RUBBER LAYER: NO

IF NOT SPECIFIED ON DRAWING, LINEAR DIMENSION TOLERANCES PER ISO 2768-1 CLASS C, GEOMETRICAL TOLERANCES PER ISO 2768-1 CLASS L

Sheet: A2	Extra info:	General tolerance: ISO 2768 - cL
Drawn: PH	Weight (kg): 98,0 kg	Drawn according: ISO268; ISO1101; ISO2553
Date: 15.9.2016		Status:
Scale: 1:3		Customer reference number:
Quick search: XRHR	© All rights reserved. Reproduction is not permitted without written permission of GOUDSMIT Magnetic Systems BV	Product key: RHP-B219A06-065-RSD-BA
Description: HEADROLLER NdFeB - D219 - W700	Part number: RHAN22065000	Rev: B