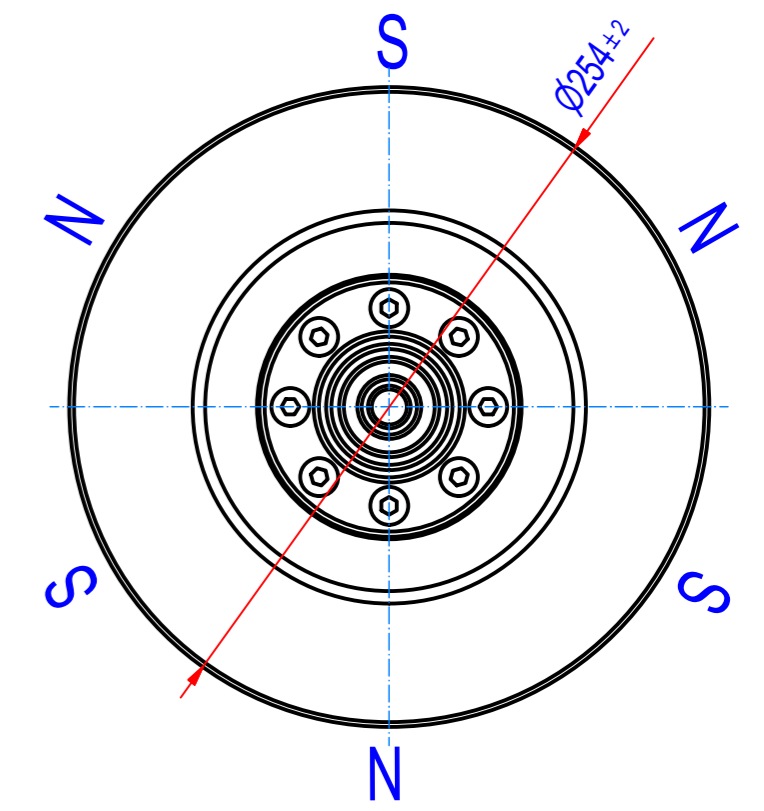
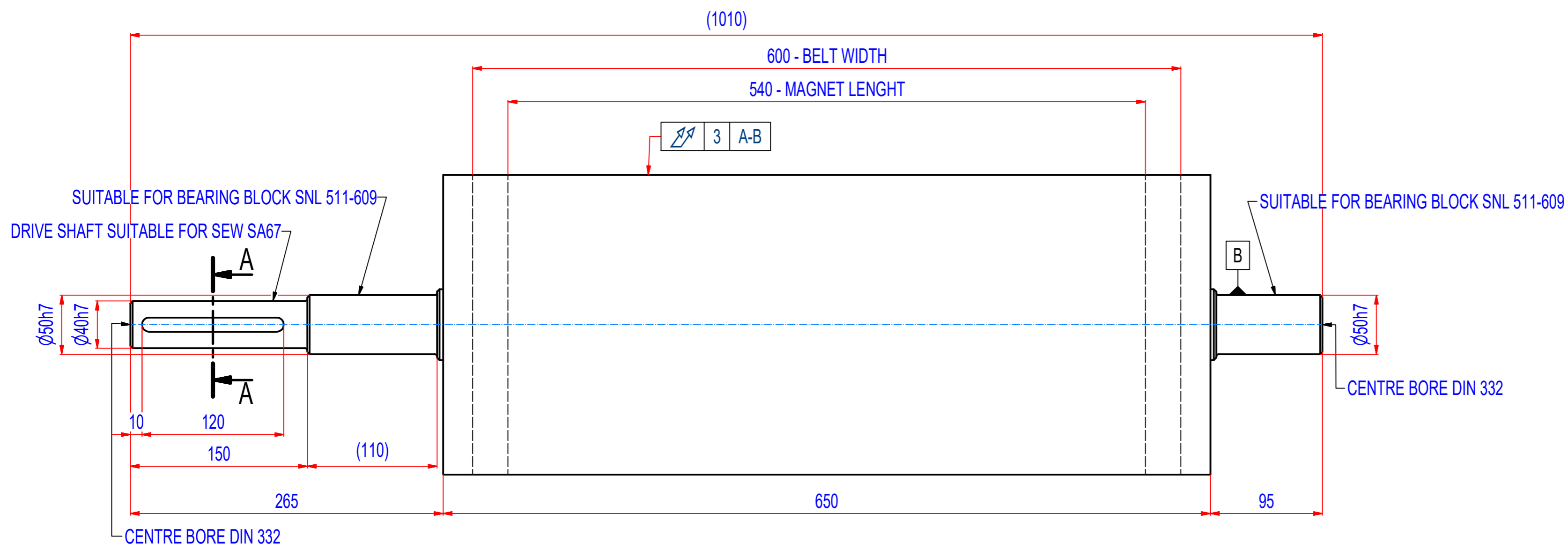
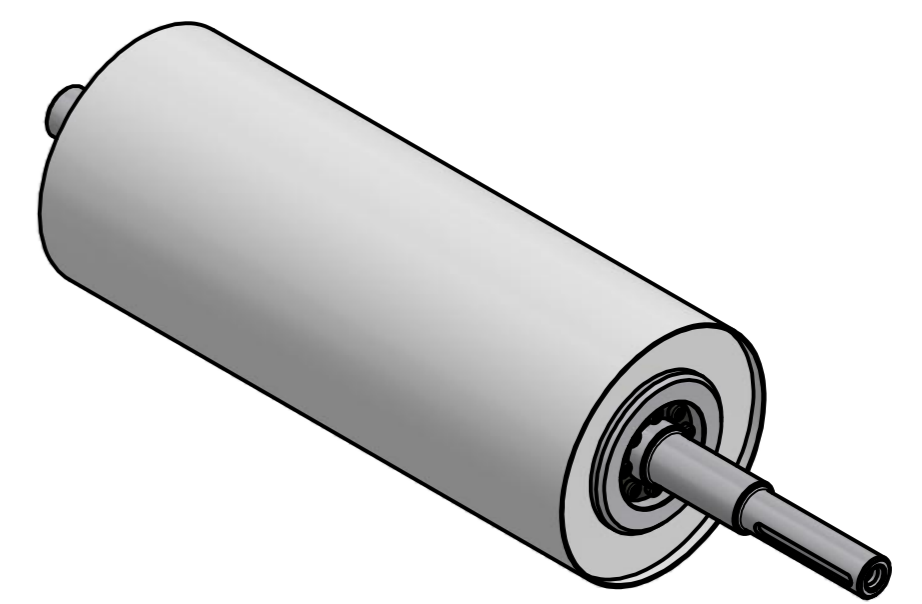
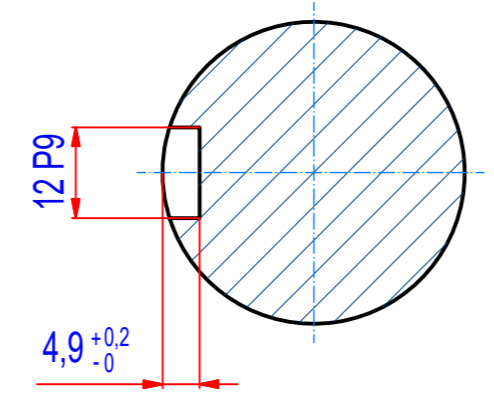


REV	BY	DATE	DESCRIPTION
A	JDL	11.02.2013	ORIGINAL DRAWING
B	PH	9.11.2016	CHANGE LENGHT-NEW STANDARD (650mm)



A-A (1:1)



**SPECIFICATIONS**

- SUITABLE FOR BELT WIDTH: 600 mm
- MAGNET TYPE: NdFeB
- NUMBER OF POLES: 6
- SURFACE MAG. INTENSITY: 3400 Gauss
- SHAFT TYPE: REMOVABLE, EQUIPPED WITH CLAMP BUSHINGS
- OVERALL WEIGHT: 123 kg
- CROWNING: NO
- RUBBER LAYER: NO

IF NOT SPECIFIED ON DRAWING, LINEAR DIMENSION TOLERANCES PER ISO 2768-1 CLASS C, GEOMETRICAL TOLERANCES PER ISO 2768-1 CLASS L

1	A073_000000	VÁLEC RHAN25060000		123,3	1
POZ.	Č. SOUČÁSTI	POPIS	MATERIÁL	HMOT.	MN.
Sheet: A2 Drawn: PH Date: 24.02.2017 Predecessor:		Extra info: <b>GOUDSMIT</b> MAGNETIC SYSTEMS <small>© All rights reserved. Reproduction is not permitted without written permission of GOUDSMIT Magnetic Systems BV</small>		General tolerance: ISO 2768 - cL Drawn according: ISO268; ISO1101; ISO2553 Status: Customer reference number:	
Quick search: XRHR Description: HEADROLLER NdFeB - D254 - W650			Product key: RHP-B254A06-060-RSD-BA Part number: RHAN25060000 Rev: B		