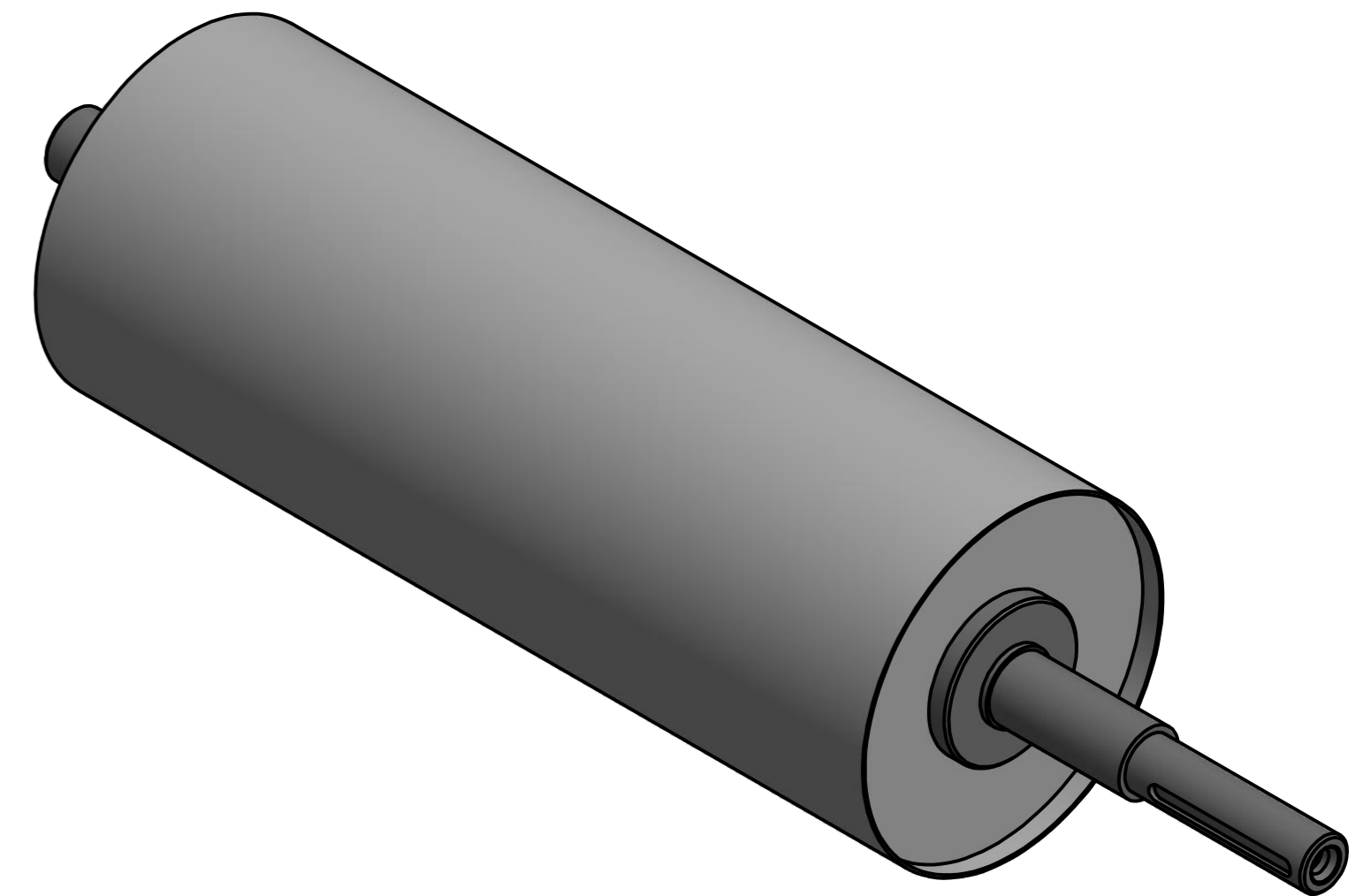
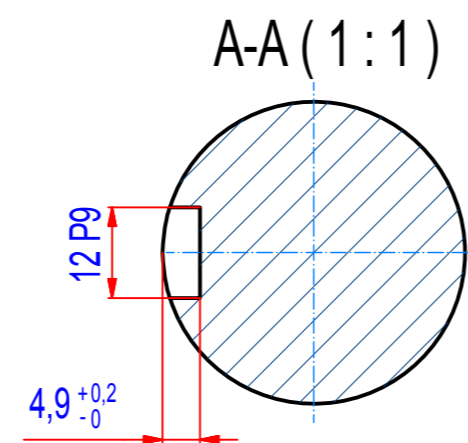
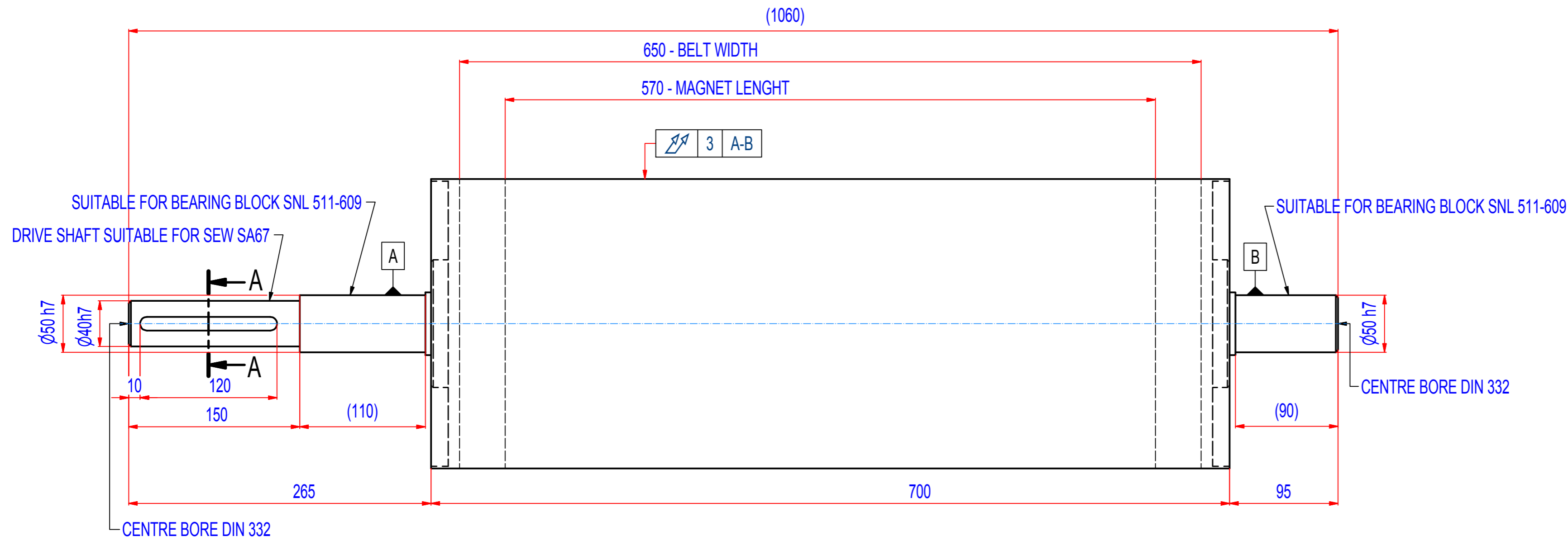


REV	BY	DATE	DESCRIPTION
A	JDL	12.2.2013	ORIGINAL DRAWING
B	PH	11.11.2016	CHANGE LENGTH - NEW STANDARD(700mm)



SPECIFICATIONS

SUITABLE FOR BELT WIDTH: 650 mm

MAGNET TYPE: NdFeB

NUMBER OF POLES: 6

SURFACE MAG. INTENSITY: 3400 Gauss

SHAFT TYPE: REMOVABLE, EQUIPPED WITH CLAMP BUSHINGS

OVERALL WEIGHT: 123 kg

CROWNING: NO

RUBBER LAYER: NO

IF NOT SPECIFIED ON DRAWING, LINEAR DIMENSION TOLERANCES PER ISO 2768-1 CLASS C, GEOMETRICAL TOLERANCES PER ISO 2768-1 CLASS L

Sheet: A2	Extra info:	General tolerance: ISO 2768 - cL
Drawn: PH	Weight (kg): 123,0 kg	Drawn according: ISO268; ISO1101; ISO2553
Date: 15.9.2016	<p>GOUDSMIT MAGNETIC SYSTEMS</p> <p>© All rights reserved. Reproduction is not permitted without written permission of GOUDSMIT Magnetic Systems BV</p>	Status:
Scale: 1:3		Customer reference number:
Quick search: XRHR	Description: HEADROLLER NdFeB - D254 - W700	Product key: RHP-B254A06-060-RSD-BA
		Part number: RHAN25065000
		Rev: B