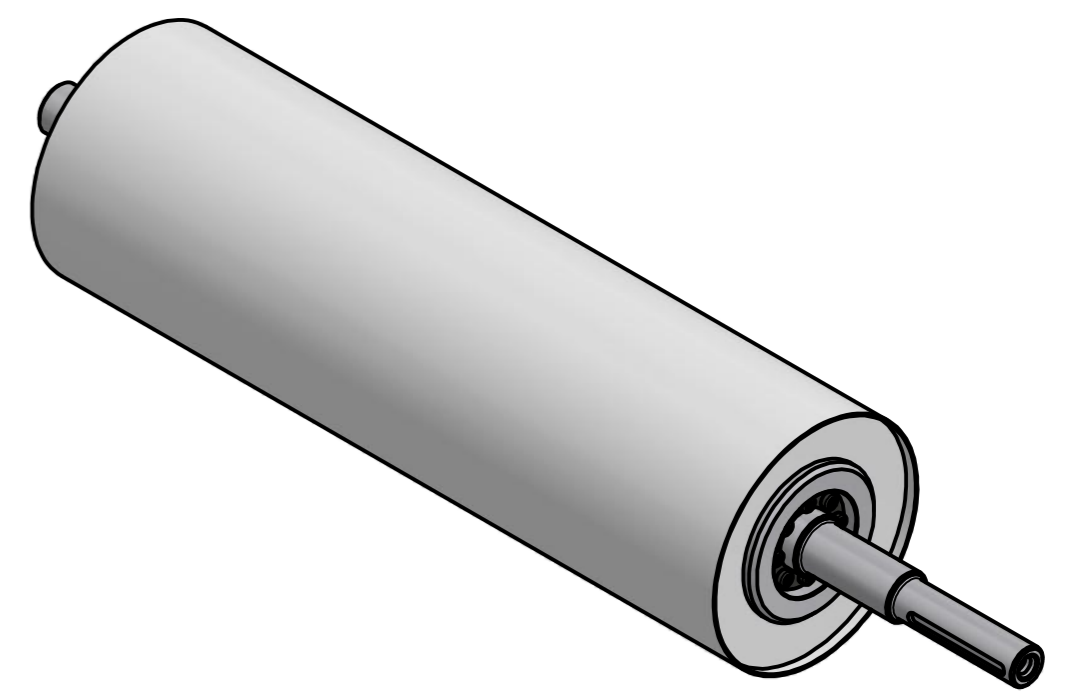
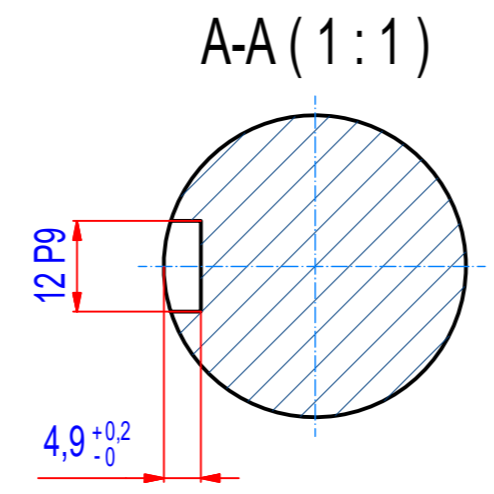
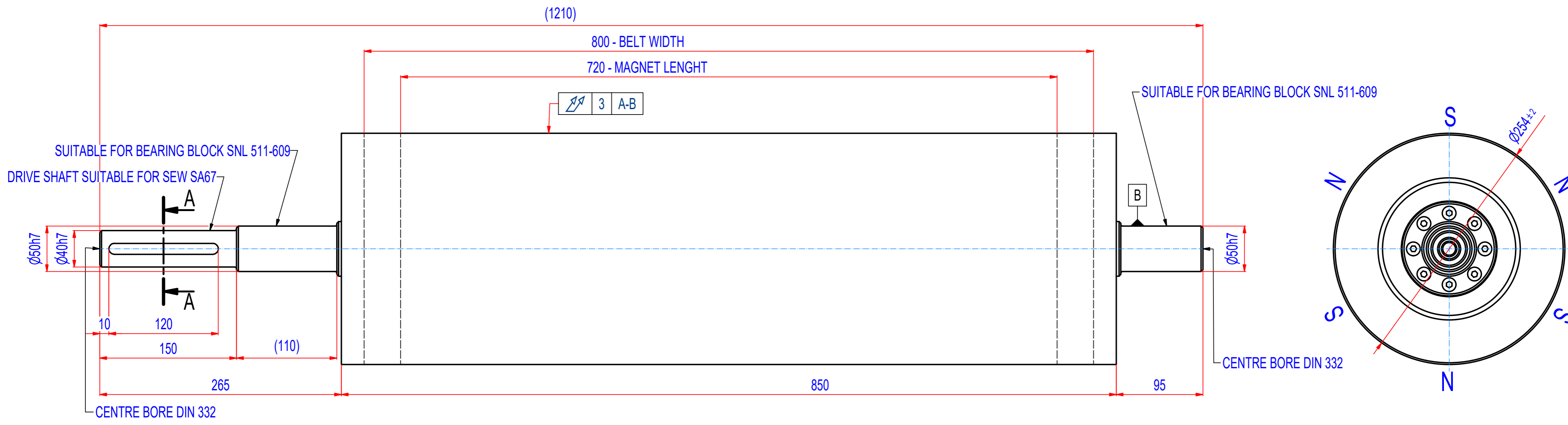


REV	BY	DATE	DESCRIPTION
A	JDL	13.02.2013	ORIGINAL DRAWING
B	PH	11.11.2016	CHANGE LENGHT-NEW STANDARD (850mm)



SPECIFICATIONS

- SUITABLE FOR BELT WIDTH: 800 mm
- MAGNET TYPE: NdFeB
- NUMBER OF POLES: 6
- SURFACE MAG. INTENSITY: 3400 Gauss
- SHAFT TYPE: REMOVABLE, EQUIPPED WITH CLAMP BUSHINGS
- OVERALL WEIGHT: 155 kg
- CROWNING: NO
- RUBBER LAYER: NO

IF NOT SPECIFIED ON DRAWING, LINEAR DIMENSION TOLERANCES PER ISO 2768-1 CLASS C, GEOMETRICAL TOLERANCES PER ISO 2768-1 CLASS L

POZ./POS.	Č. SOUČÁSTI/ PART NUMBER	POPIS / DESCRIPTION	HMOT./ WEIGHT
1	A075_000000	VÁLEC RHAN25080000	155,3
Sheet: A2 Drawn: PH Date: 24.02.2017 Predecessor:		Extra info: GOUDSMIT MAGNETIC SYSTEMS <small>© All rights reserved. Reproduction is not permitted without written permission of GOUDSMIT Magnetic Systems BV</small>	General tolerance: ISO 2768 - cL Drawn according: ISO268; ISO1101; ISO2553 Status: Customer reference number: Product key: RHP-B254A06-080-RSD-BA Part number: RHAN25080000 Rev: B
Quick search: XRHR Description: Magnetic headroller, NdFeB, D254 - W850			