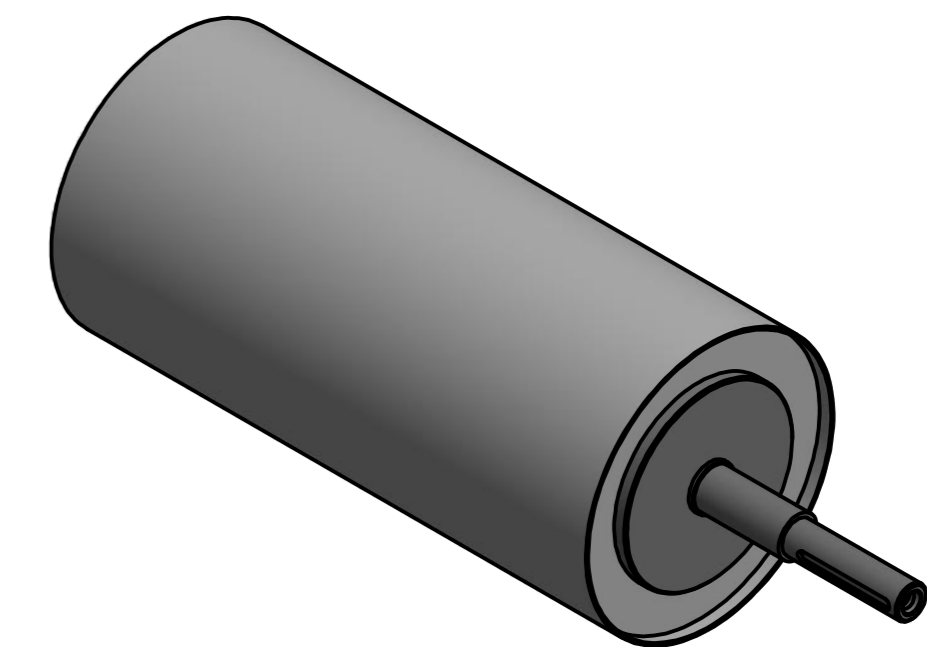
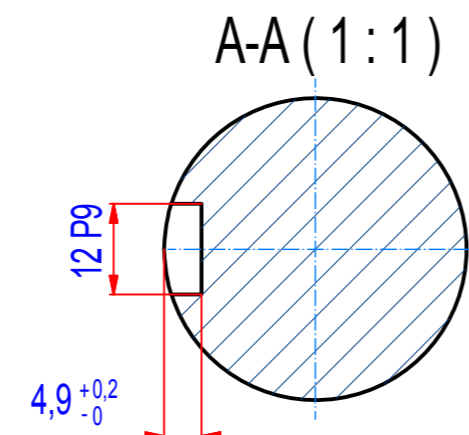
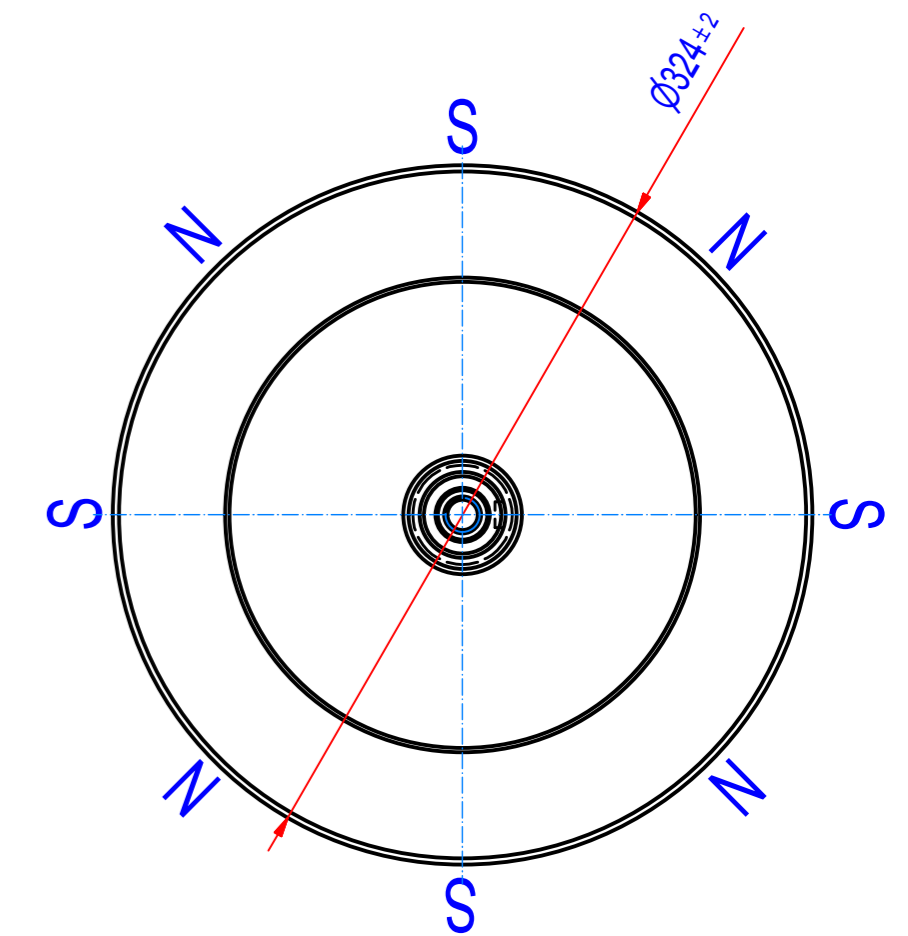
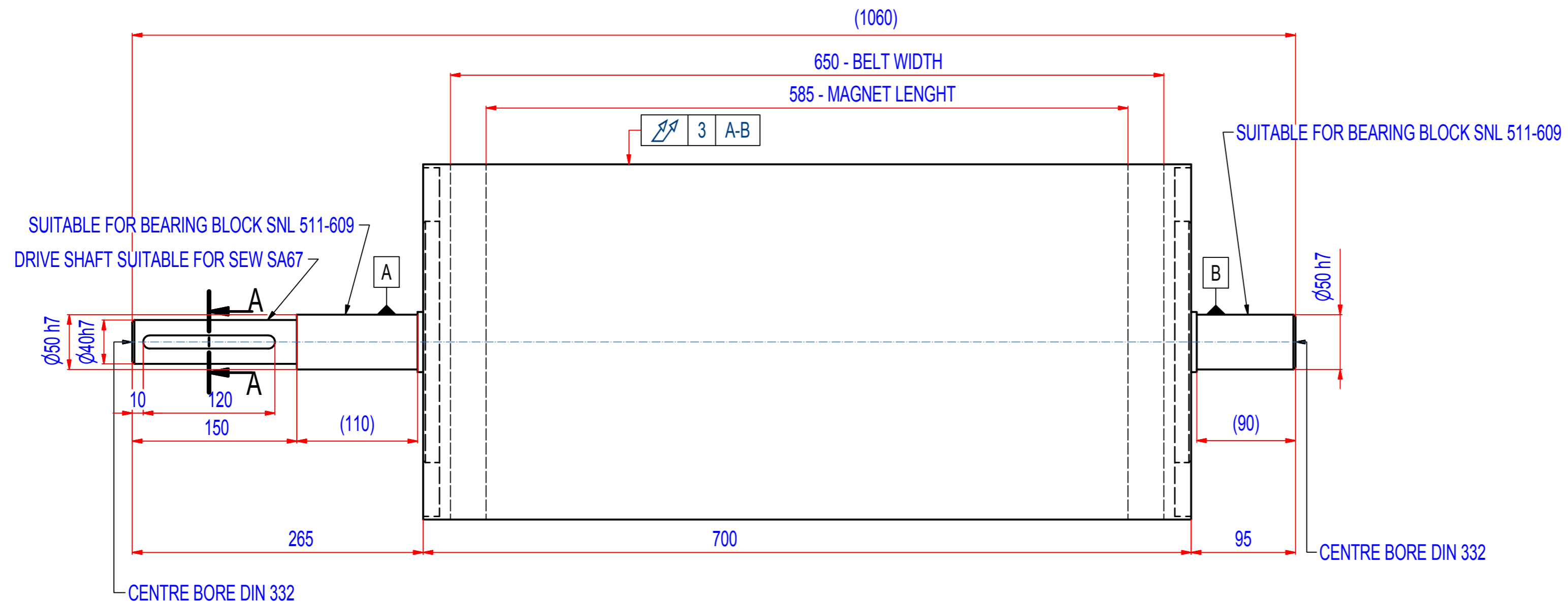


REV	BY	DATE	DESCRIPTION
A	JDL	28.2.2013	ORIGINAL DRAWING
B	PH	11.11.2016	NEW STANDARD LENGHT (700mm)



SPECIFICATIONS

SUITABLE FOR BELT WIDTH: 650 mm

MAGNET TYPE: NdFeB

NUMBER OF POLES: 8

SURFACE MAG. INTENSITY: 3400 Gauss

SHAFT TYPE: REMOVABLE, EQUIPPED WITH CLAMP BUSHINGS

OVERALL WEIGHT: 177 kg

CROWNING: NO

RUBBER LAYER: NO

IF NOT SPECIFIED ON DRAWING, LINEAR DIMENSION TOLERANCES PER ISO 2768-1 CLASS C, GEOMETRICAL TOLERANCES PER ISO 2768-1 CLASS L

Sheet: A2	Extra info:	General tolerance: ISO 2768 - cL
Drawn: PH	Weight (kg): 177,0 kg	Drawn according: ISO268; ISO1101; ISO2553
Date: 11.11.2016	<p>© All rights reserved. Reproduction is not permitted without written permission of GOUDSMIT Magnetic Systems BV</p>	Status:
Scale: 1:3		Customer reference number:
Quick search: XRHR	Description: HEADROLLER NdFeB - D324 - W700	Product key: RHP-B324A08-065-RSD-BA
		Part number: RHAN32065000
		Rev: B