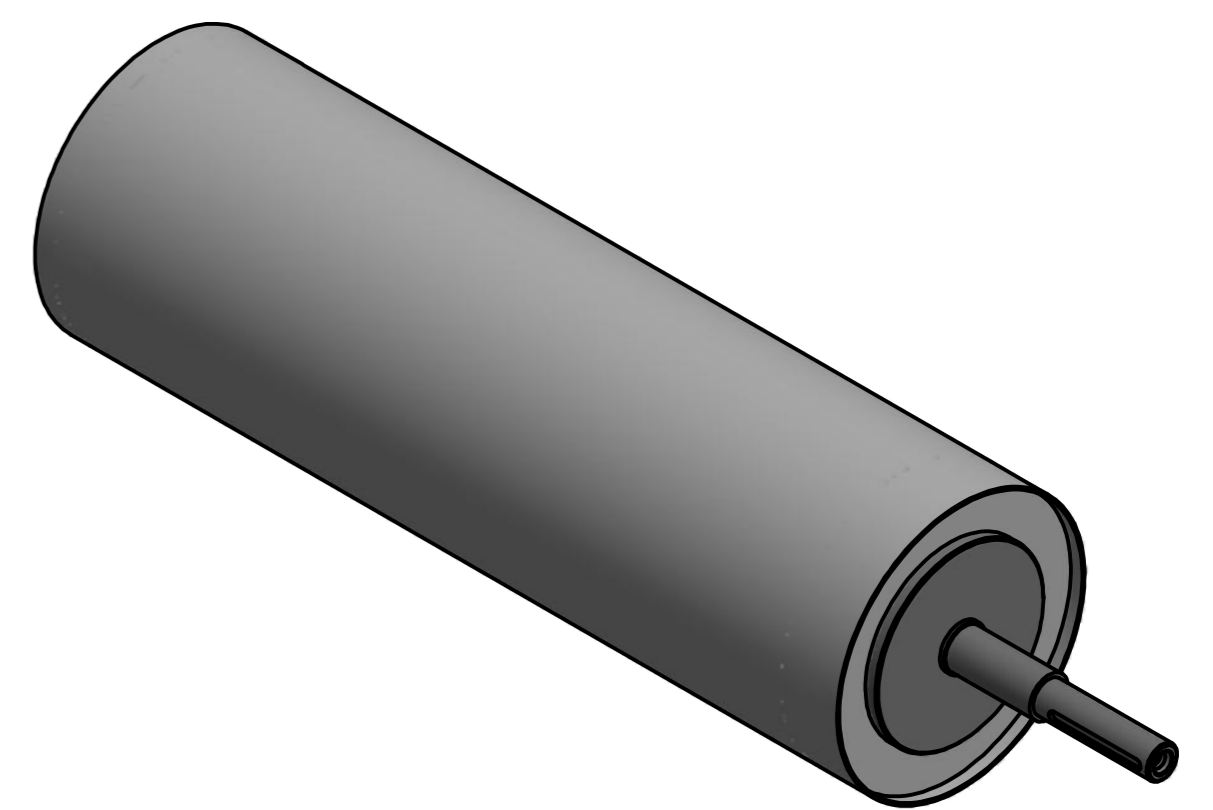
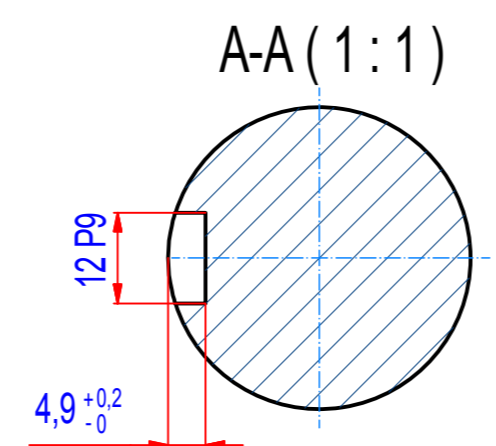
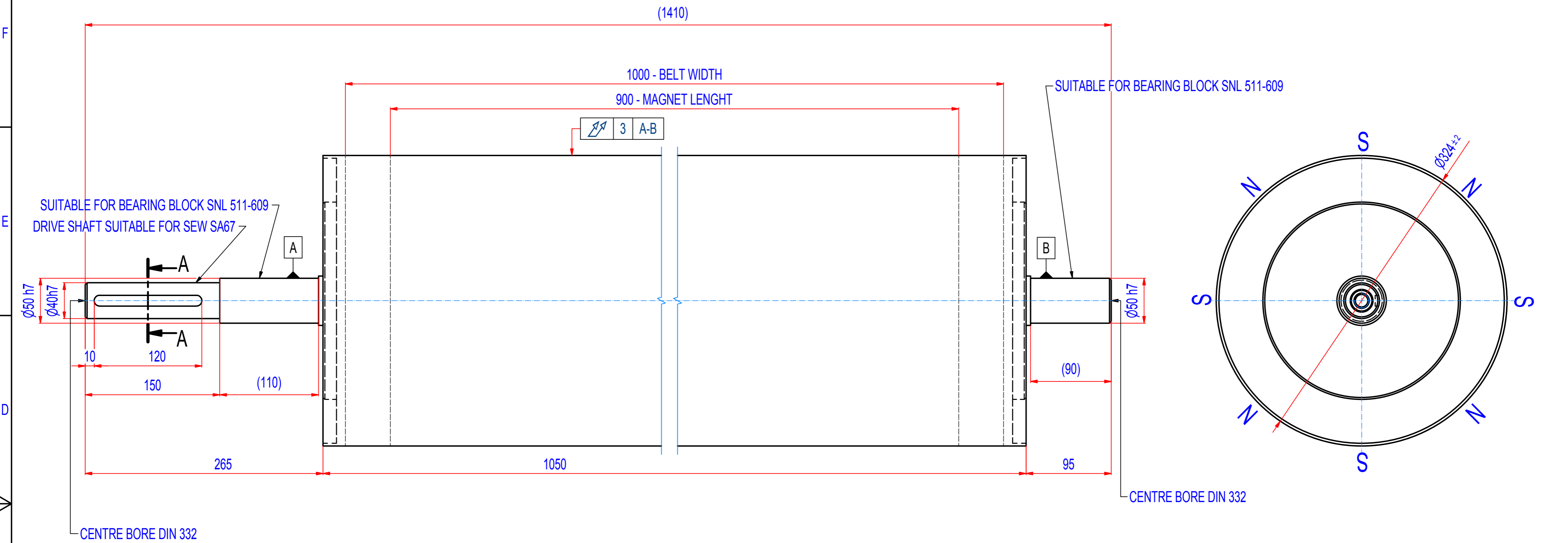


REV	BY	DATE	DESCRIPTION
A	PH	22.2.2013	ORIGINAL DRAWING
B	PH	11.11.2016	NEW STANDARD LENGTH (1050mm)



SPECIFICATIONS

- SUITABLE FOR BELT WIDTH: 1000 mm
- MAGNET TYPE: NdFeB
- NUMBER OF POLES: 8
- SURFACE MAG. INTENSITY: 3400 Gauss
- SHAFT TYPE: REMOVABLE, EQUIPPED WITH CLAMP BUSHINGS
- OVERALL WEIGHT: 251 kg
- CROWNING: NO
- RUBBER LAYER: NO

IF NOT SPECIFIED ON DRAWING, LINEAR DIMENSION TOLERANCES PER ISO 2768-1 CLASS C, GEOMETRICAL TOLERANCES PER ISO 2768-1 CLASS L

Sheet: A2	Extra info:	General tolerance: ISO 2768 - cL
Drawn: PH	Weight (kg): 251,0 kg	Drawn according: ISO268; ISO1101; ISO2553
Date: 9.11.2016		Status:
Scale: 1:3		Customer reference number:
Quick search: XRHR	© All rights reserved. Reproduction is not permitted without written permission of GOUDSMIT Magnetic Systems BV	Product key: RHP-B324A08-100-RSD-BA
Description: HEADROLLER NdFeB - D324 - W1050	Part number: RHAN32100000	Rev: B