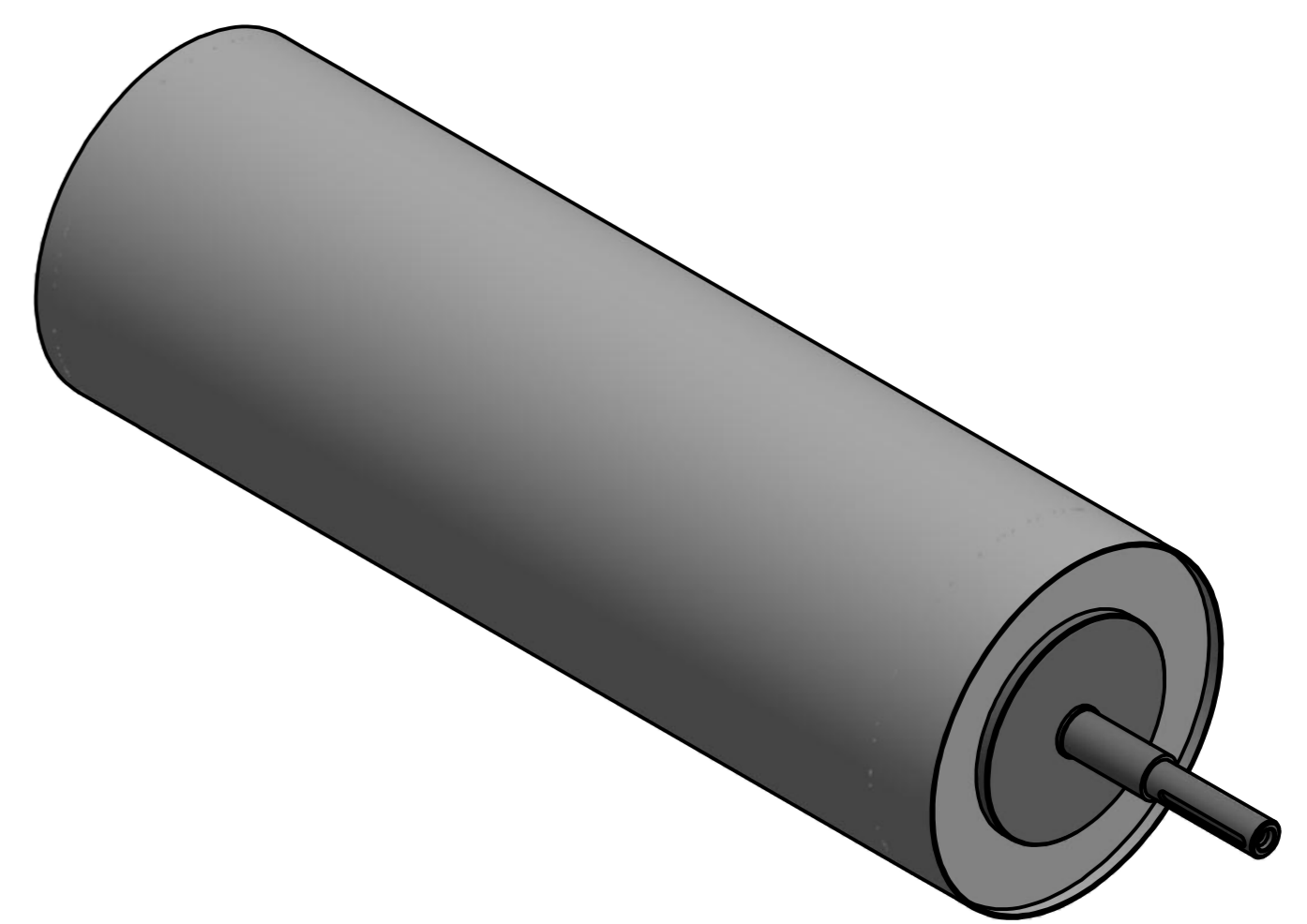
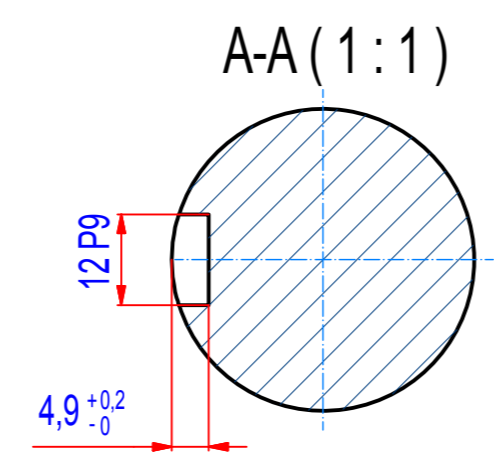
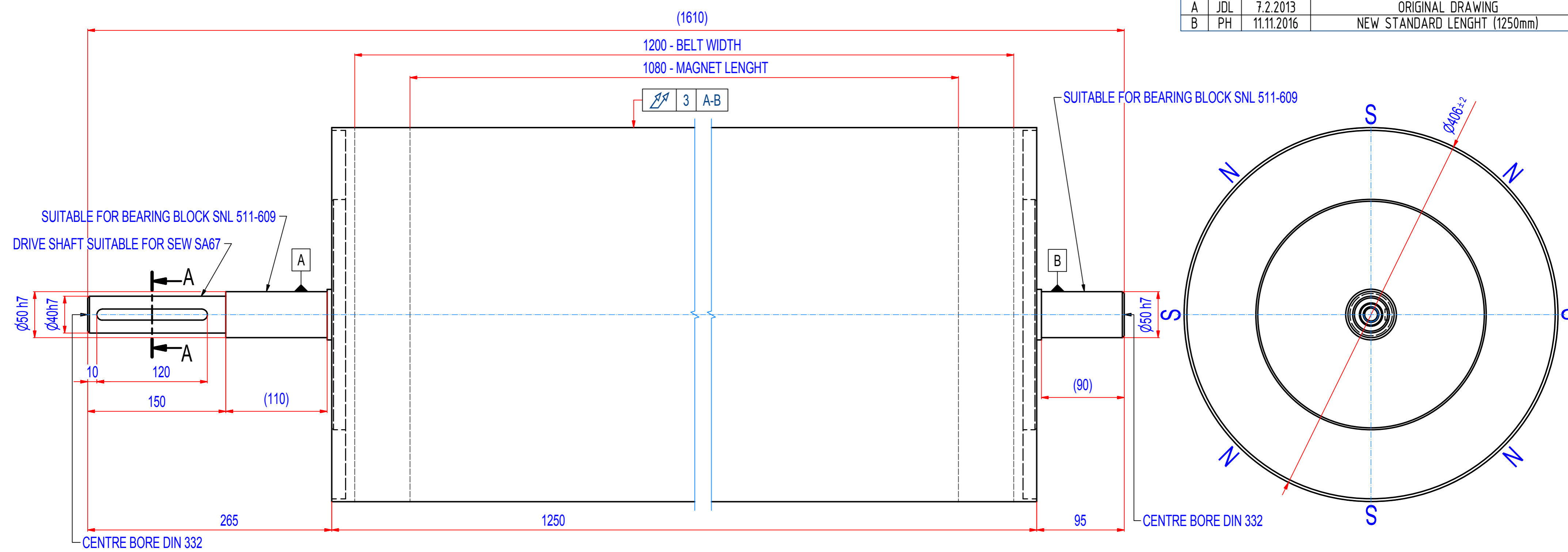


REV	BY	DATE	DESCRIPTION
A	JDL	7.2.2013	ORIGINAL DRAWING
B	PH	11.11.2016	NEW STANDARD LENGHT (1250mm)



### SPECIFICATIONS

- SUITABLE FOR BELT WIDTH: 1200 mm
- MAGNET TYPE: NdFeB
- NUMBER OF POLES: 8
- SURFACE MAG. INTENSITY: 3400 Gauss
- SHAFT TYPE: REMOVABLE, EQUIPPED WITH CLAMP BUSHINGS
- OVERALL WEIGHT: 475 kg
- CROWNING: NO
- RUBBER LAYER: NO

IF NOT SPECIFIED ON DRAWING, LINEAR DIMENSION TOLERANCES PER ISO 2768-1 CLASS C, GEOMETRICAL TOLERANCES PER ISO 2768-1 CLASS L

Sheet: A2	Extra info:	General tolerance: ISO 2768 - cL
Drawn: PH	Weight (kg): 475,0 kg	Drawn according: ISO268; ISO1101; ISO2553
Date: 11.11.2016	 <small>© All rights reserved. Reproduction is not permitted without written permission of GOUDSMIT Magnetic Systems BV</small>	Status:
Scale: 1:3		Customer reference number:
Quick search: XRHR	Description: HEADROLLER NdFeB - D406 - W1250	Product key: RHP-B406A08-120-RSD-BA
		Part number: RHAN40120000
		Rev: B