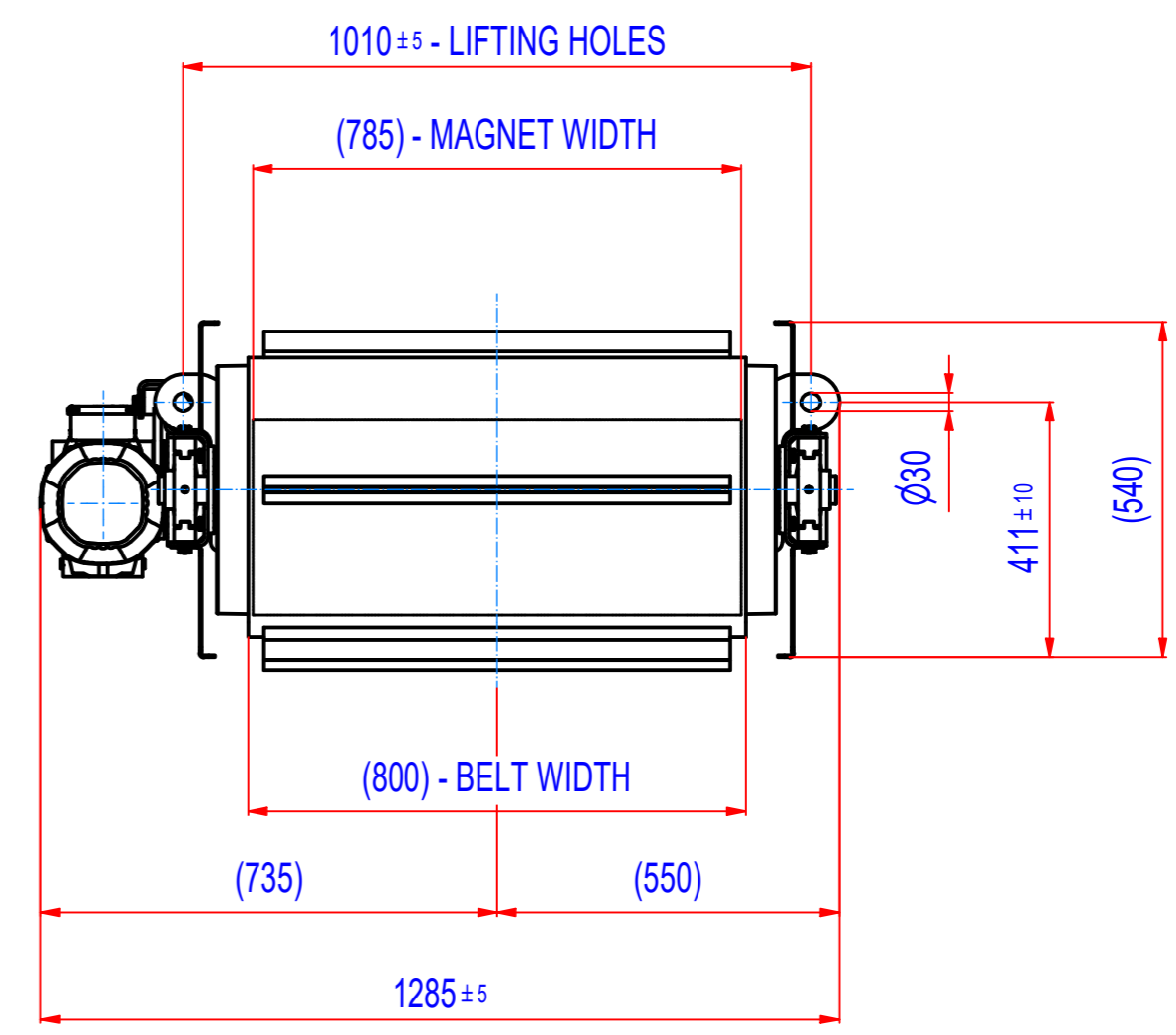
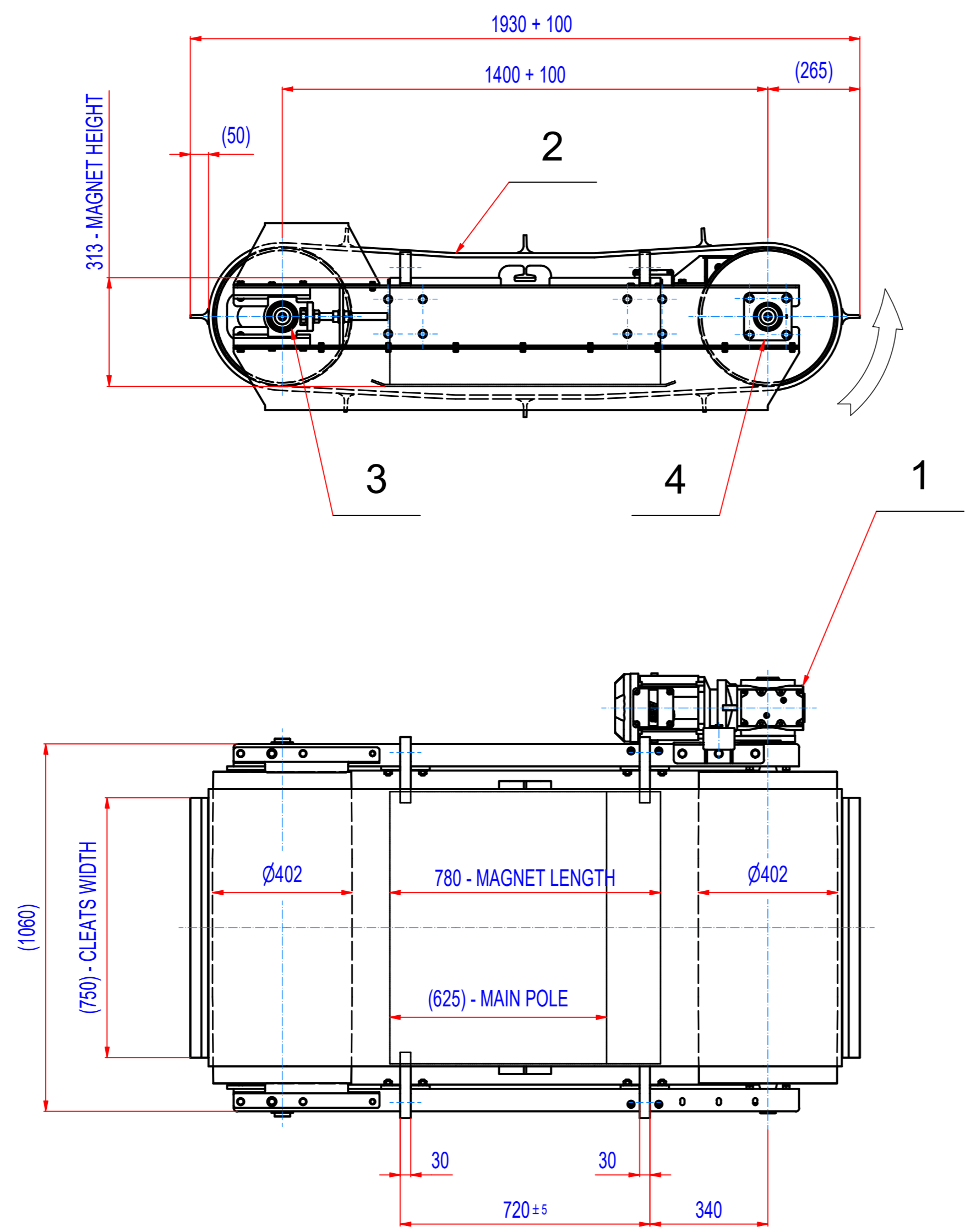


REV	BY	DATE	DESCRIPTION
-	LF	31.01.2018	ORIGINAL DRAWING
A	LF	21.09.2022	BELTS CLEATS 50mm (WAS100), MOTOR IP55 (WAS IP54)
			12.03.2023 - REDUCTION IN THE NUMBER OF SPARE PARTS



4	15_8700045	BEARINGS ASSEMBLY INA PCJ 45		2,5	2
3	15_8600045	BEARINGS ASSEMBLY INA PTUE 45		2,7	2
2	45_4080062	PÁS EP 500/4 5+2, W=800, L=4120	RUBBER	52	1
1	M022007132	SEW SA67/TDRN100LS4, 2,2kW, i=20,37 (71RPM)		59,2	1
POZ.	Č. SOUČÁSTI	POPIS	MATERIÁL	HMOT.	MN.

Sheet: A2 Drawn: LF Weight (kg): 1231,5 Date: 31.01.2018 Predecessor: SEPB065034 Quick search: XSPB 4 Description: SPARE PARTS FOR ROFC065340	Extra info: <small>© All rights reserved. Reproduction is not permitted without written permission of GOUDSMIT Magnetic Systems BV</small>	General tolerance: ISO 2768 - cL Drawn according: ISO268; ISO1101; ISO2553 Status: Customer reference number: Product key: ROP-F4-C-065-W-G-L-B-B-B-NA Part number: ROFC065340_SP Rev: A
---	---	--