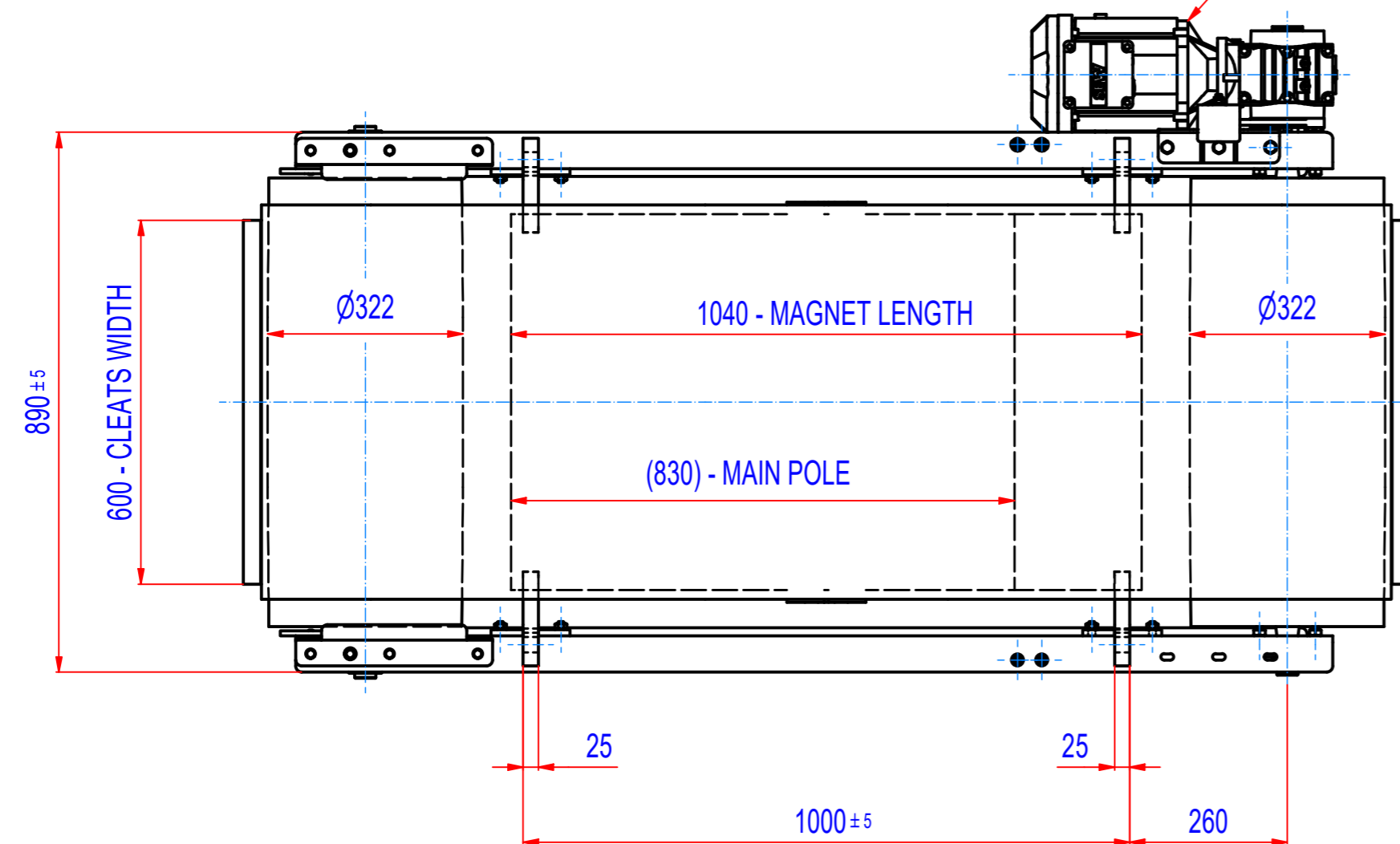
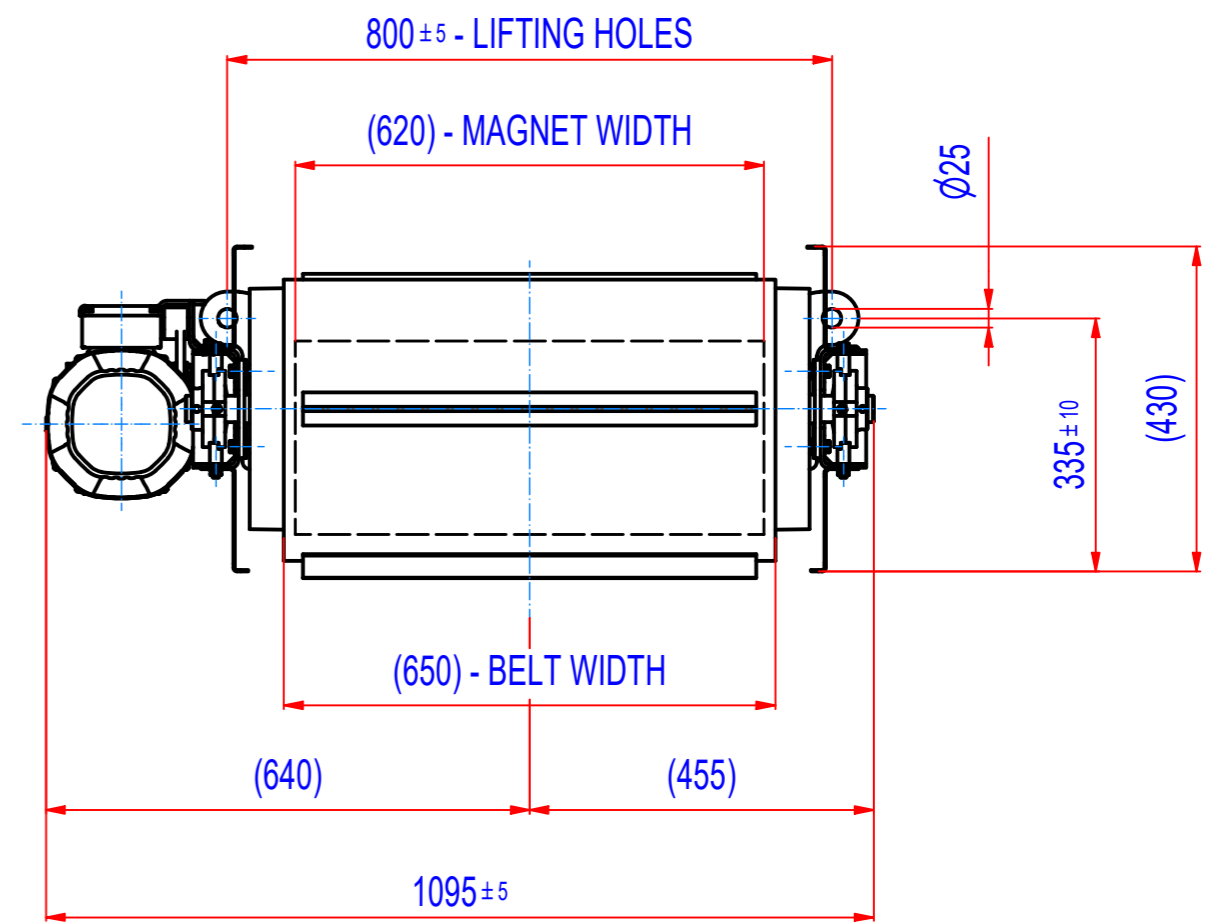
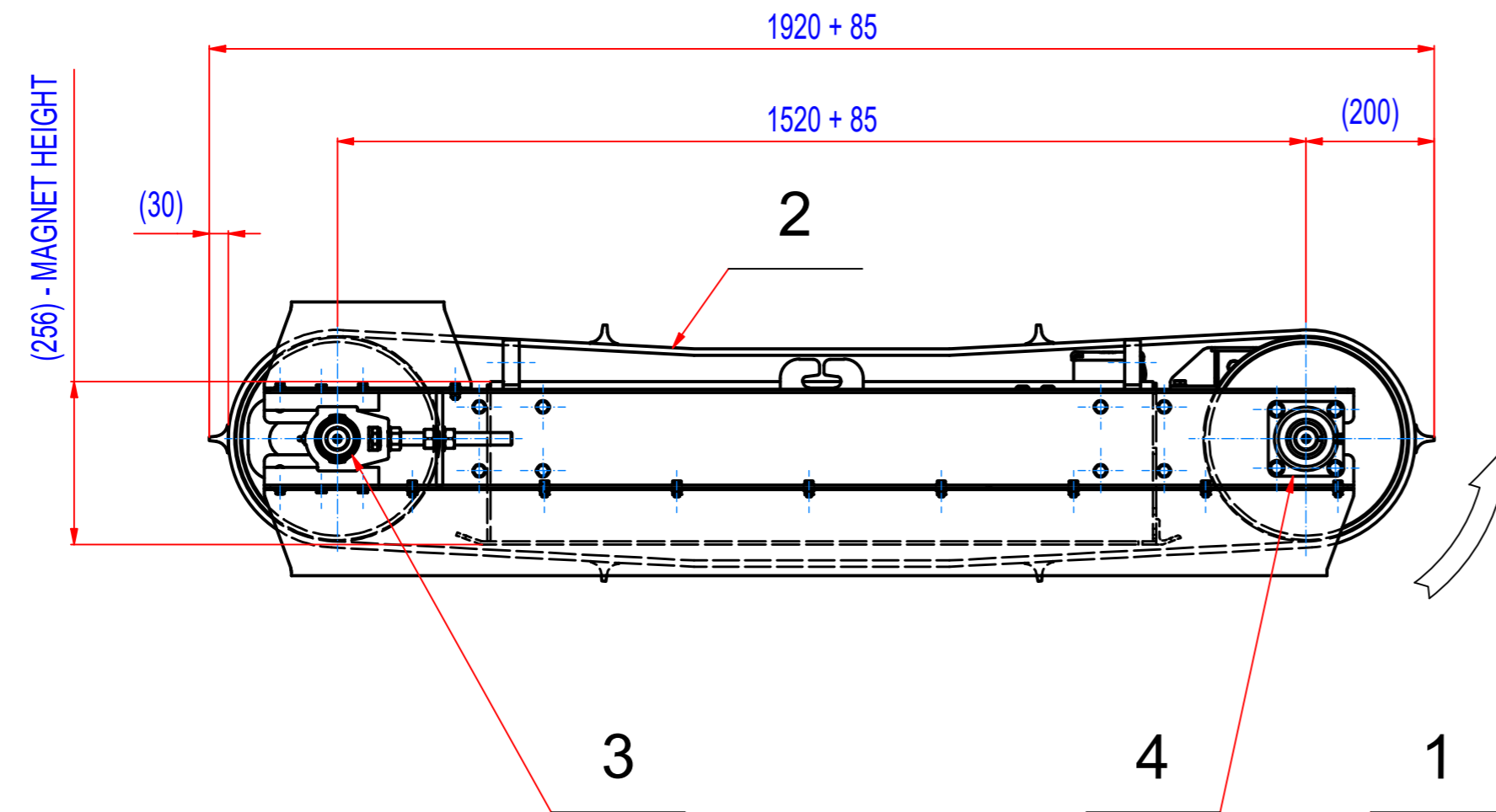


REV	DATE	BY	DESCRIPTION
-	22.05.2017	LF	ORIGINAL DRAWING
A	24.06.2021	PW	MOTOR IP55 (WAS IP54)
B	08.09.2022	LF	DRIVE 2,2kW (WAS 1,5kW)
	06.03.2023		REDUCTION IN THE NUMBER OF SPARE PARTS



- GEARED BOX SEW SA57/TDRN100LS4, i=14,24 (102RPM), MOTOR 230/400V, 2,2kW, 50Hz, IP55
- DRUM SPEED 102/min
- BELT EP400/3 4+2, WIDTH 650, LENGTH 4090, 6 CLEATS T30/10, WIDTH 600
- BELT SPEED 1,7m/s

4	15_8700035	BEARINGS ASSEMBLY INA PCJ 35		1,5	2
3	15_8600035	BEARINGS ASSEMBLY INA PTUE 35		1,7	2
2	45_4065002	BELT EP400/3 4+2, W=650, L=4090	RUBBER	31	1
1	M022010003	SEW SA57/TDRN100LS4, 2,2kW, i=14,24 (102RPM)		42	1
POZ.	Č. SOUČÁSTI	POPIS	MATERIÁL	HMOT.	MN.

	Sheet: A2	Extra info:	General tolerance: ISO 2768 - cL
Drawn: LF	Weight (kg): 872		Drawn according: ISO268; ISO1101; ISO2553
Date: 31.10.2022	Predecessor: SEPB080033		Status:
Quick search: XSPB 3	Description: SPARE PARTS FOR ROFC080330	© All rights reserved. Reproduction is not permitted without written permission of GOUDSMIT Magnetic Systems BV	Customer reference number:
			Product key: ROP-F3-C-080-W-G-L-B-B-NA
			Part number: ROFC080330_SP
			Rev: B