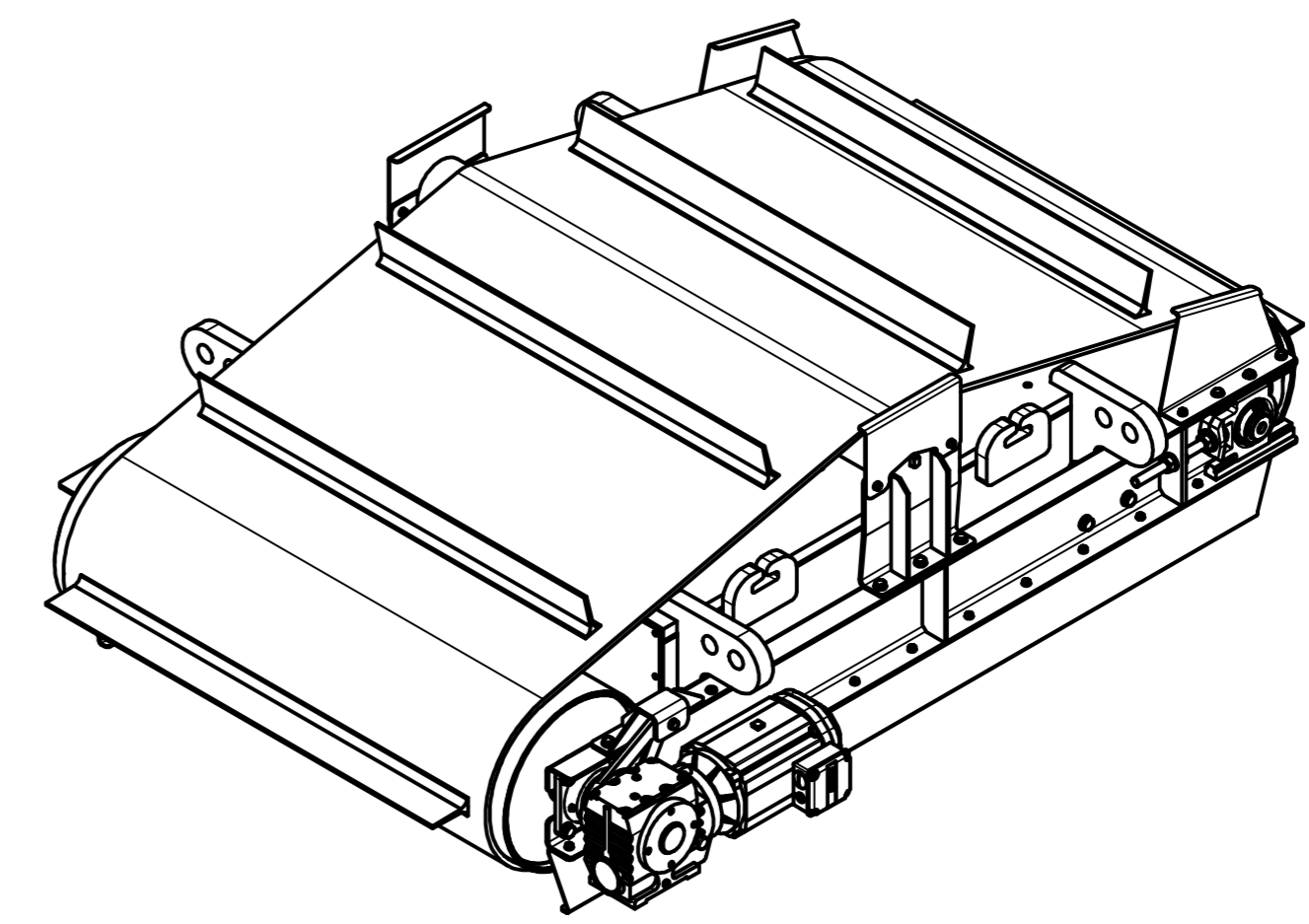
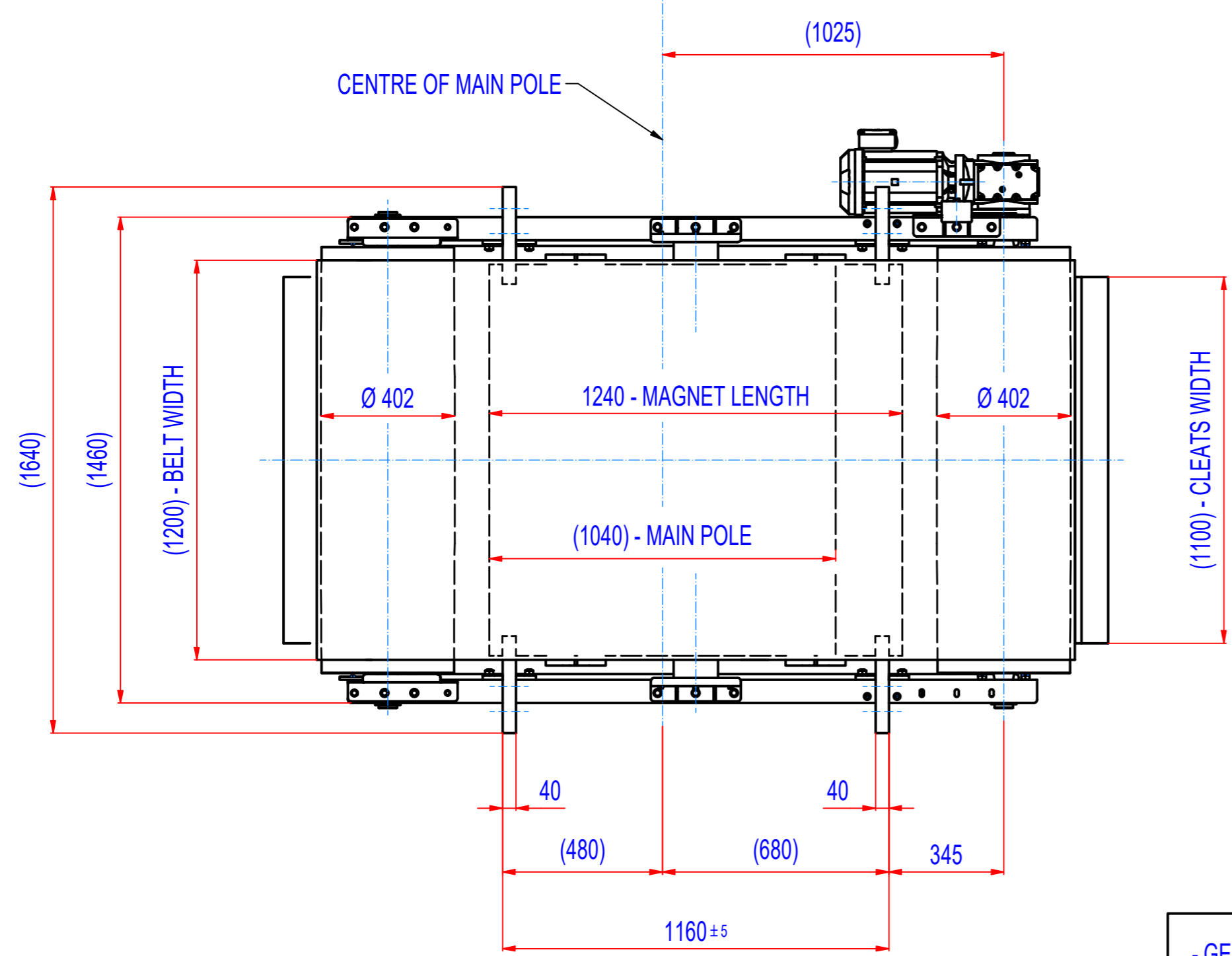
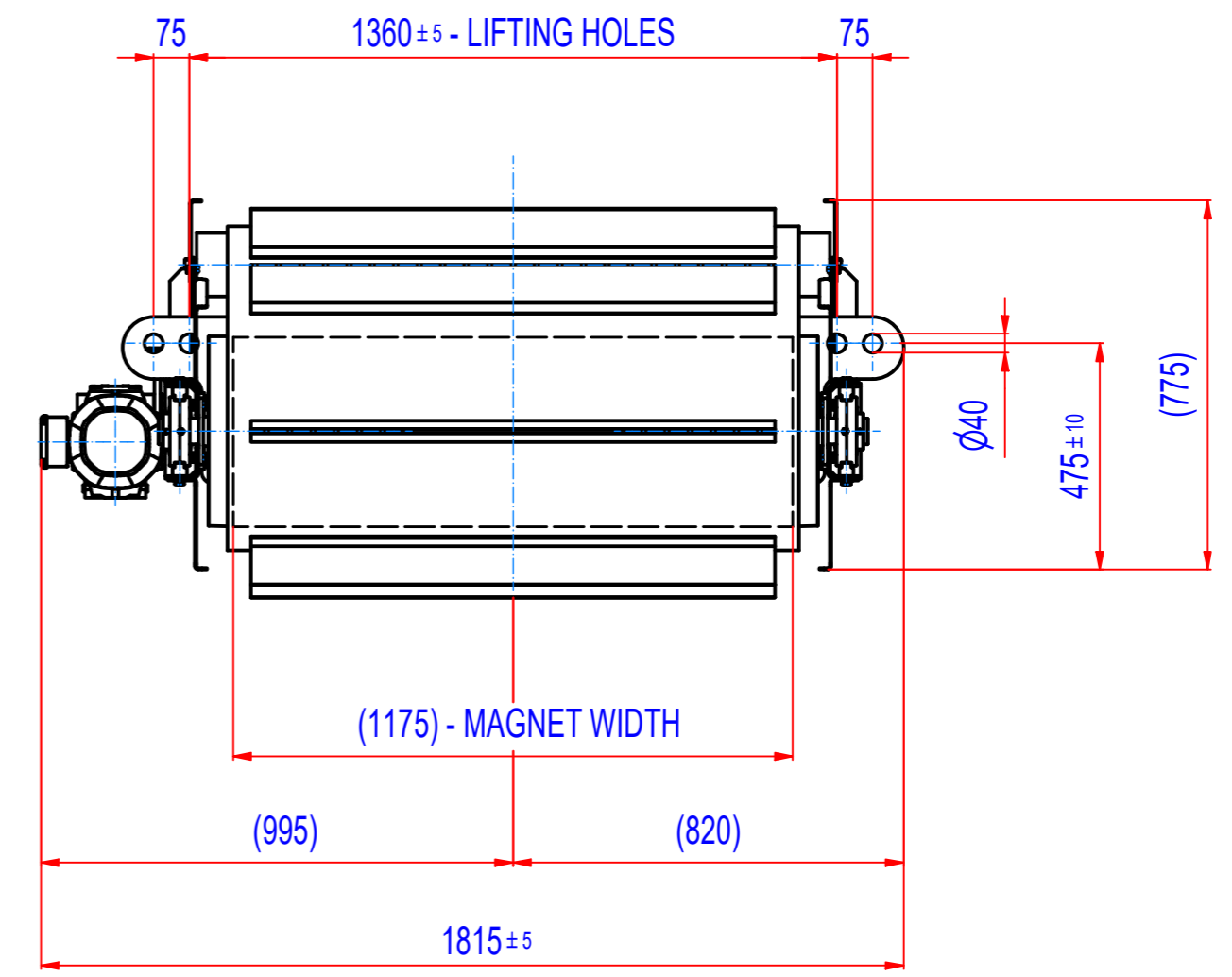
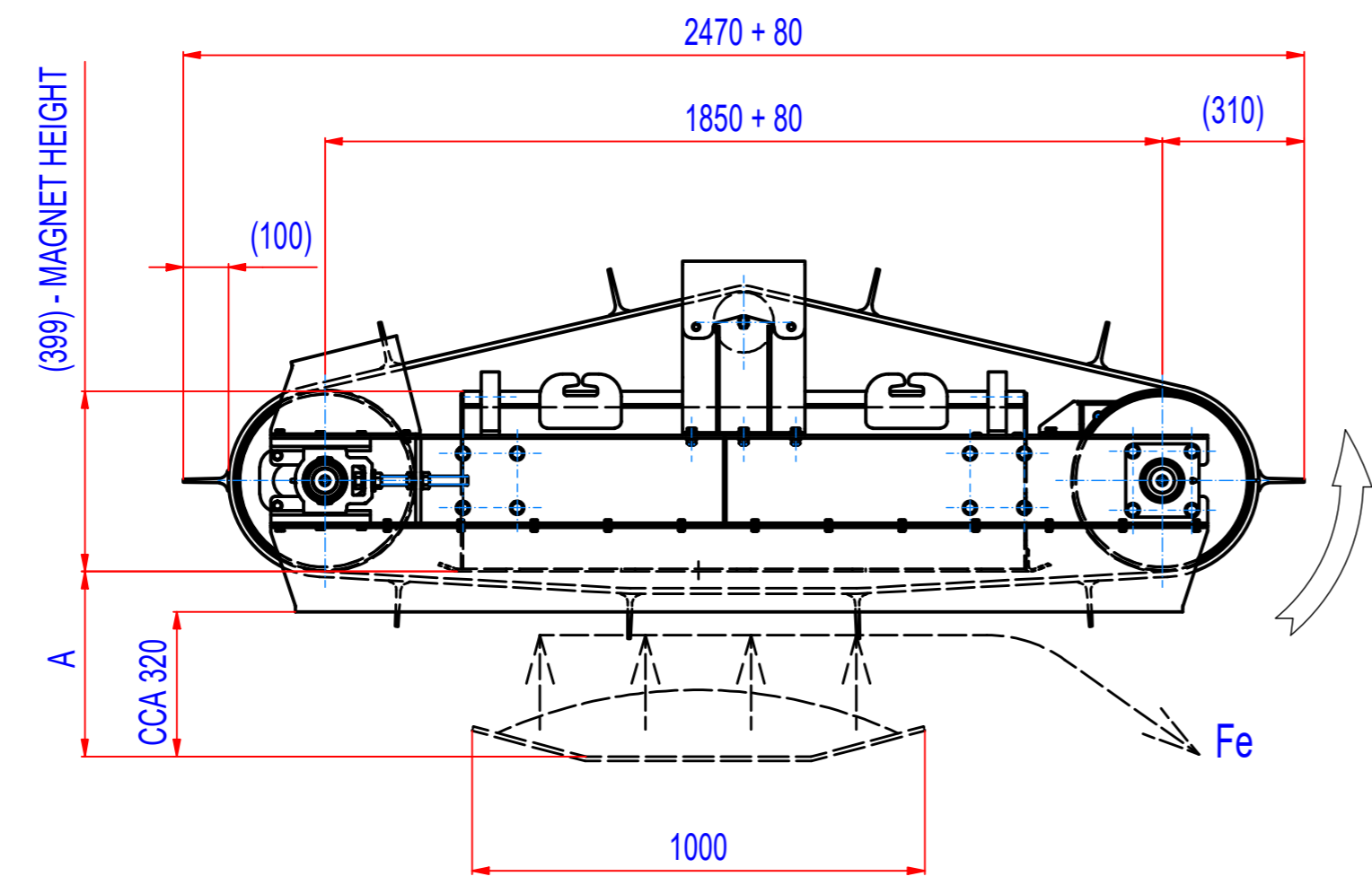


REV	BY	DATE	DESCRIPTION
-	LF	15.05.2019	ORIGINAL DRAWING



A = 460 mm - max. catch distance for rod Ø15, L=75 mm (VDE)
A = 410 mm - 400 Gs

- GEARED BOX SEW SA67/T DRN100L4, i=20,37 (71RPM),
MOTOR 230/400V, 3kW, 50Hz, IP55
- DRUM SPEED 71/min
- BELT SPEED 1,5 m/s
- BELT EP500, LENGTH 5070, WIDTH 1200,
10 CLEATS T100/10, WIDTH 1100

Sheet: A2	Extra info:	General tolerance: ISO 2768 - cL
Drawn: LF	Weight (kg): 3031 kg	Drawn according: ISO268; ISO1101; ISO2553
Date: 15.5.2019		Status:
Predecessor: SEPB100036		Customer reference number:
Quick search: XSPB 6		Product key: ROP-F6-C-100-W-G-L-B-B-NA
Description: Overband separator, Ferrite, Size 6, W1000, Cross		Part number: ROFC100360
		Rev: -