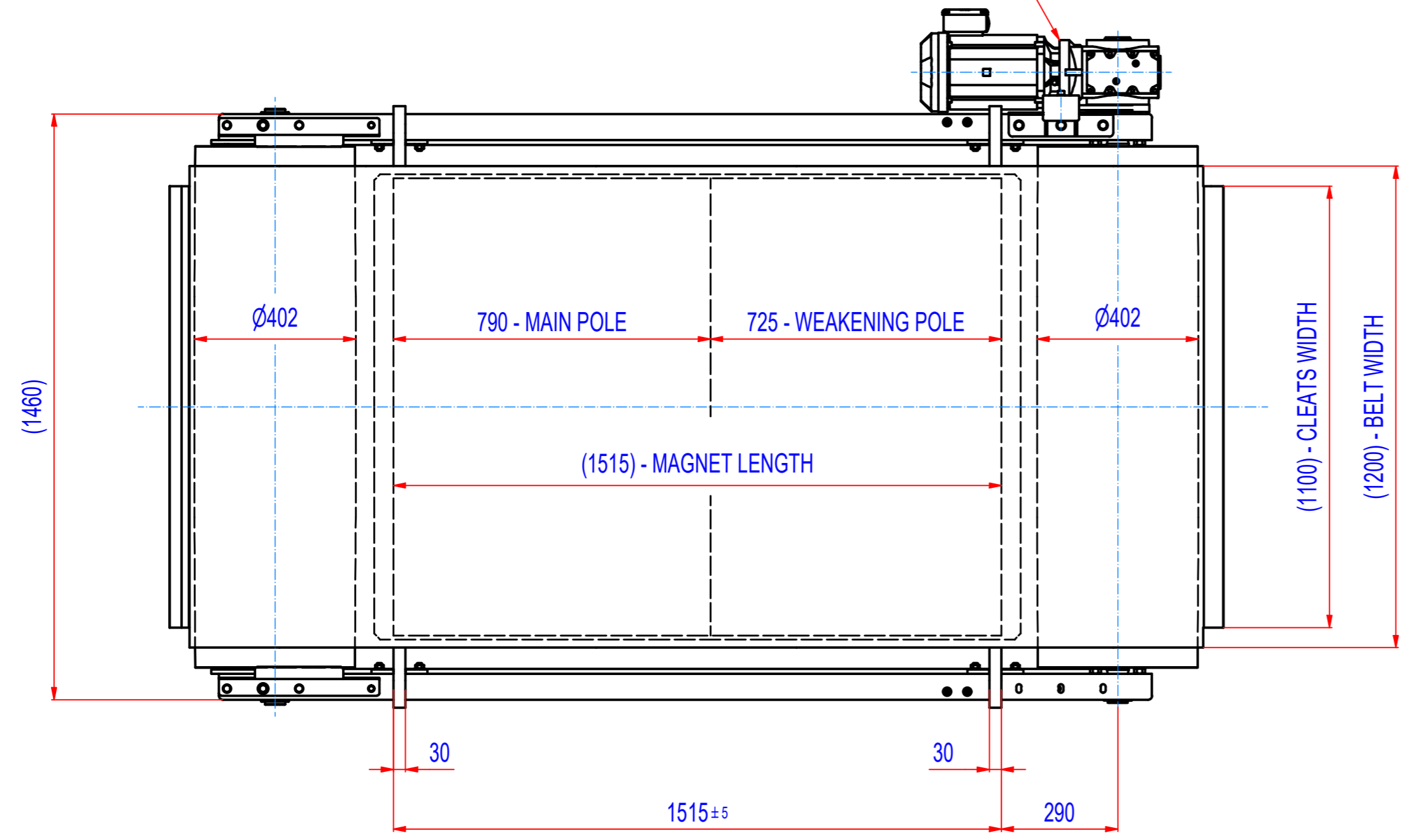
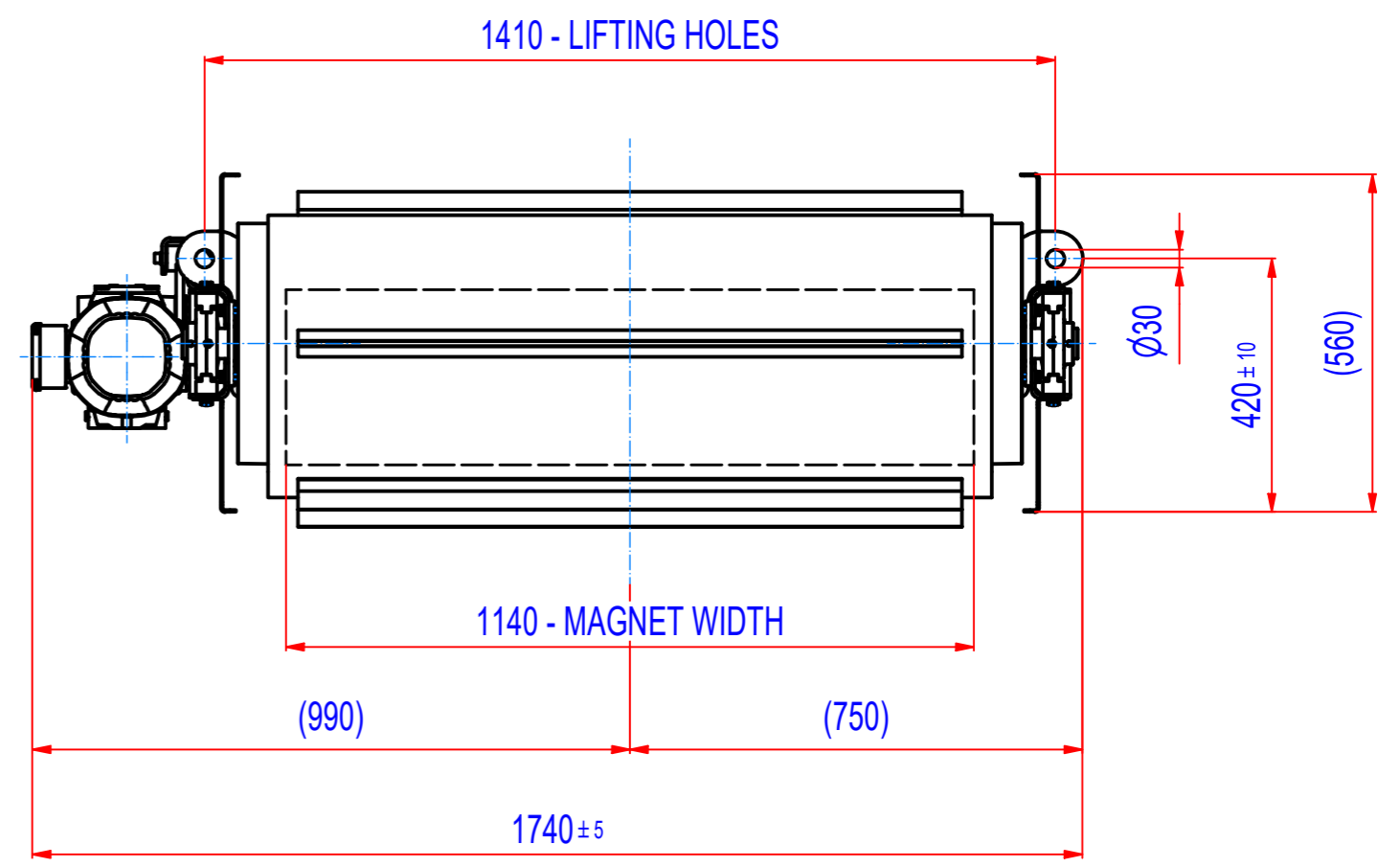
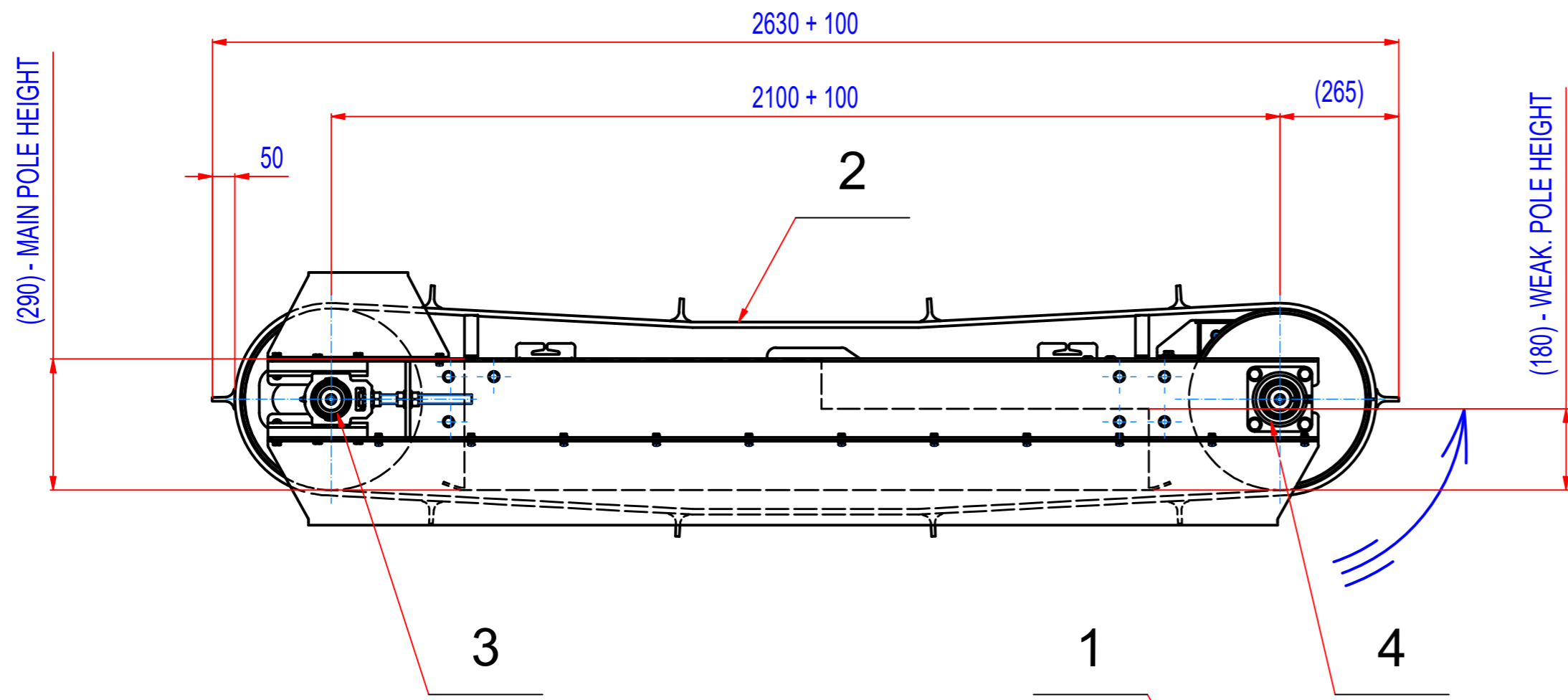


REV	DATE	BY	DESCRIPTION
-	24.06.2021	LF	ORIGINAL DRAWING
A	26.07.2023	LF	BELT CLEATS 50mm (WAS 100mm) REDUCTION IN NUMBER OF SPARE PARTS



POZ.	Č. SOUČÁSTI	POPIS	MATERIÁL	HMOT.	MN.
4	15_8700050	BEARINGS ASSEMBLY INA PCJ 50		2,3	2
3	15_8600050	BEARINGS ASSEMBLY INA PTUE 50		2,4	2
2	45_4120047	BELT EP 500/4 5+2, W = 1200, L = 5520	RUBBER	95	1
1	M030007116	SEW SA67/TDRN100L4, 3kW, i=20,37 (71 RPM)		64	1

- GEARED BOX SEW SA67/TDRN100L4, i=20,37 (71RPM),  
 MOTOR 3kW, 230/400V, 50Hz, IP55  
 - DRUM SPEED 71/min  
 - BELT SPEED 1,5 m/s  
 - BELT EP500/4 5+2, WIDTH 1200, LENGTH 5520,  
 10 CLEATS T50/10, WIDTH 1100

Sheet: <b>A2</b> Drawn: <b>LF</b> Date: <b>24.06.2021</b> Predecessor:	Weight (kg): <b>2415.1</b> Quick search: <b>XSPB 4</b> Description: <b>SPARE PARTS FOR ROFI120340</b>	Extra info:  <small>© All rights reserved. Reproduction is not permitted without written permission of GOUDSMIT Magnetic Systems BV</small>	General tolerance: <b>ISO 2768 - cL</b> Drawn according: <b>ISO268; ISO1101; ISO2553</b> Status: Customer reference number: Product key: <b>ROP-F4-I-120-W-G-L-B-B-NA</b> Part number: <b>ROFI120340_SP</b> Rev: <b>A</b>
---	---	---	---