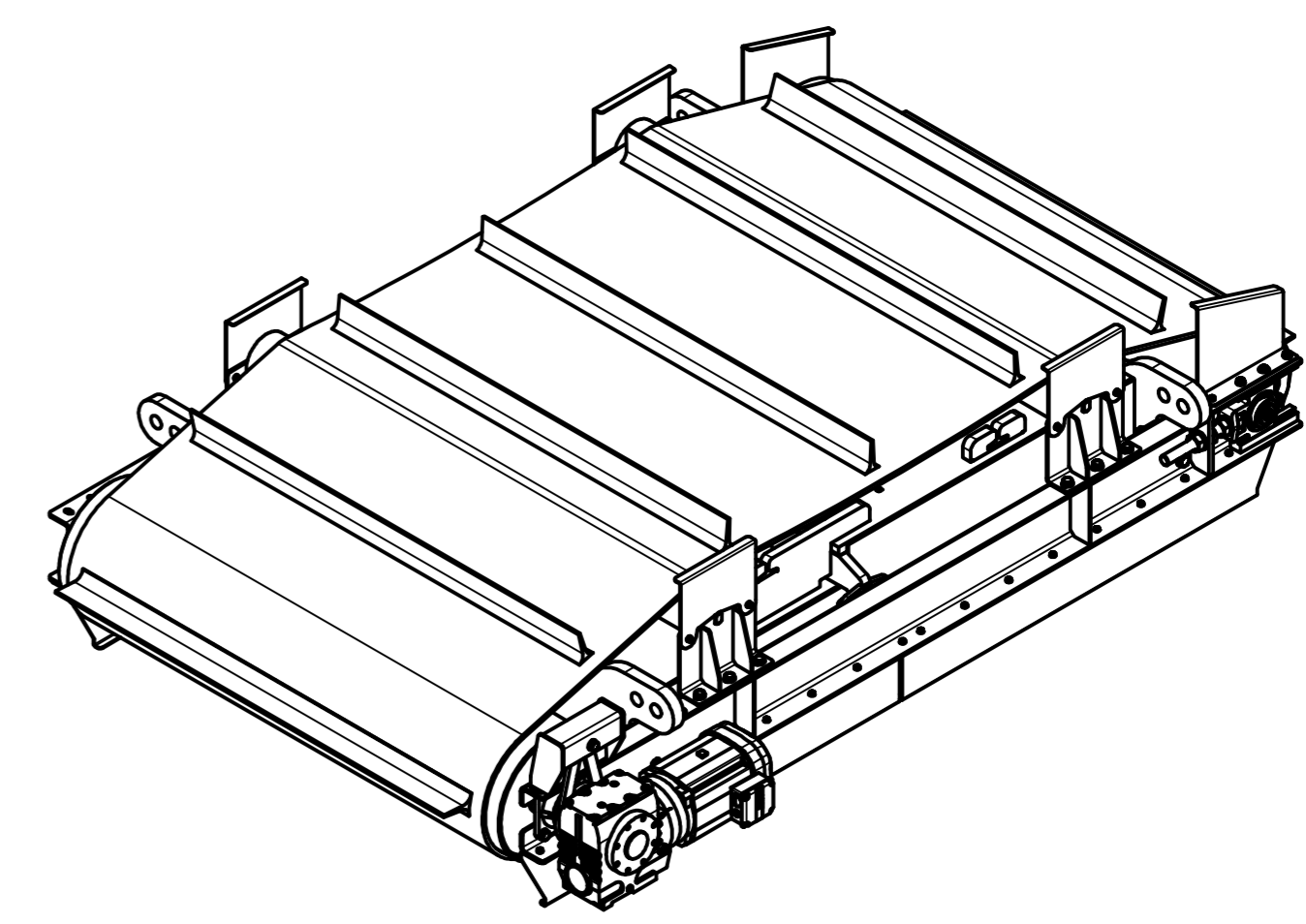
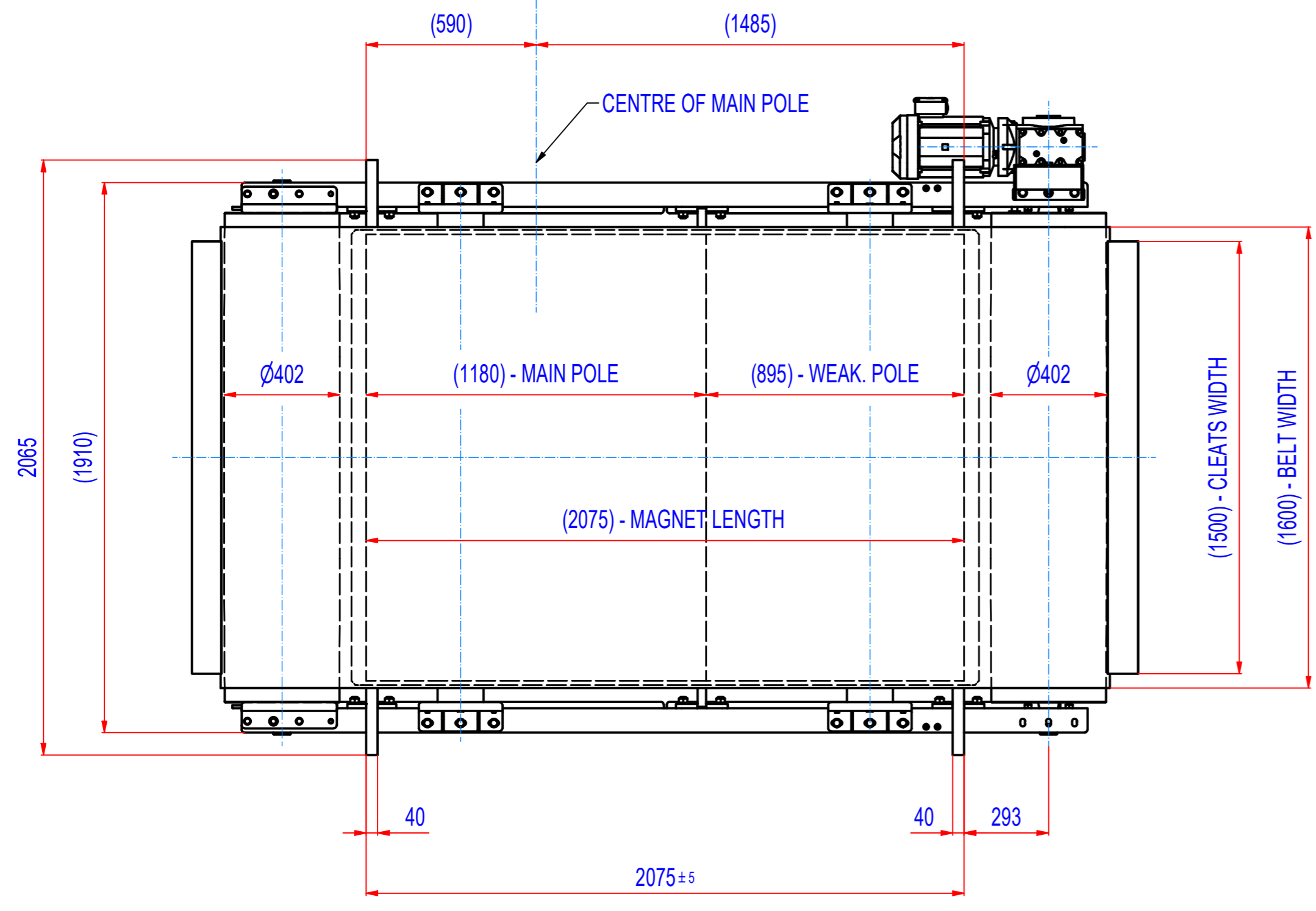
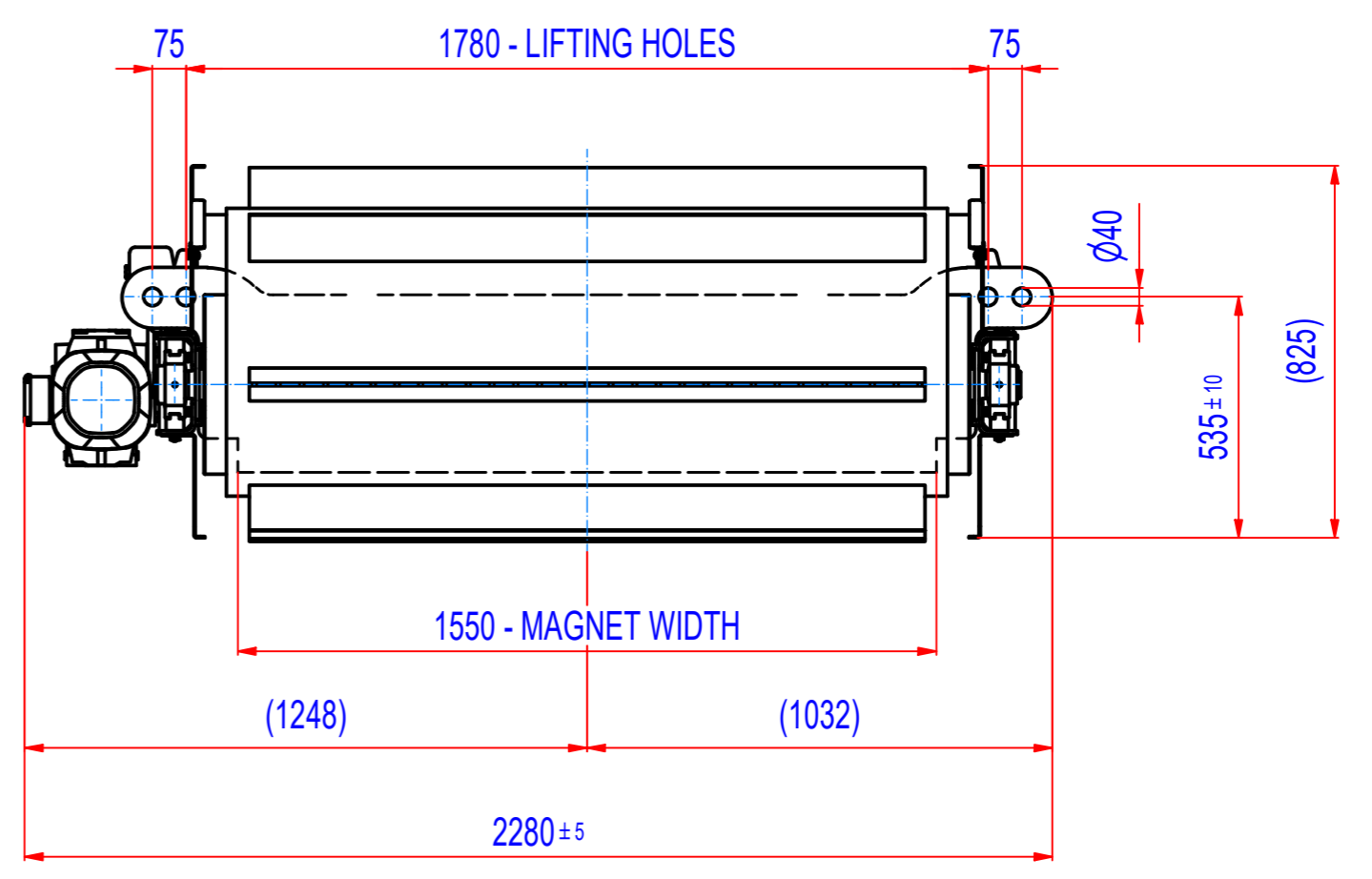
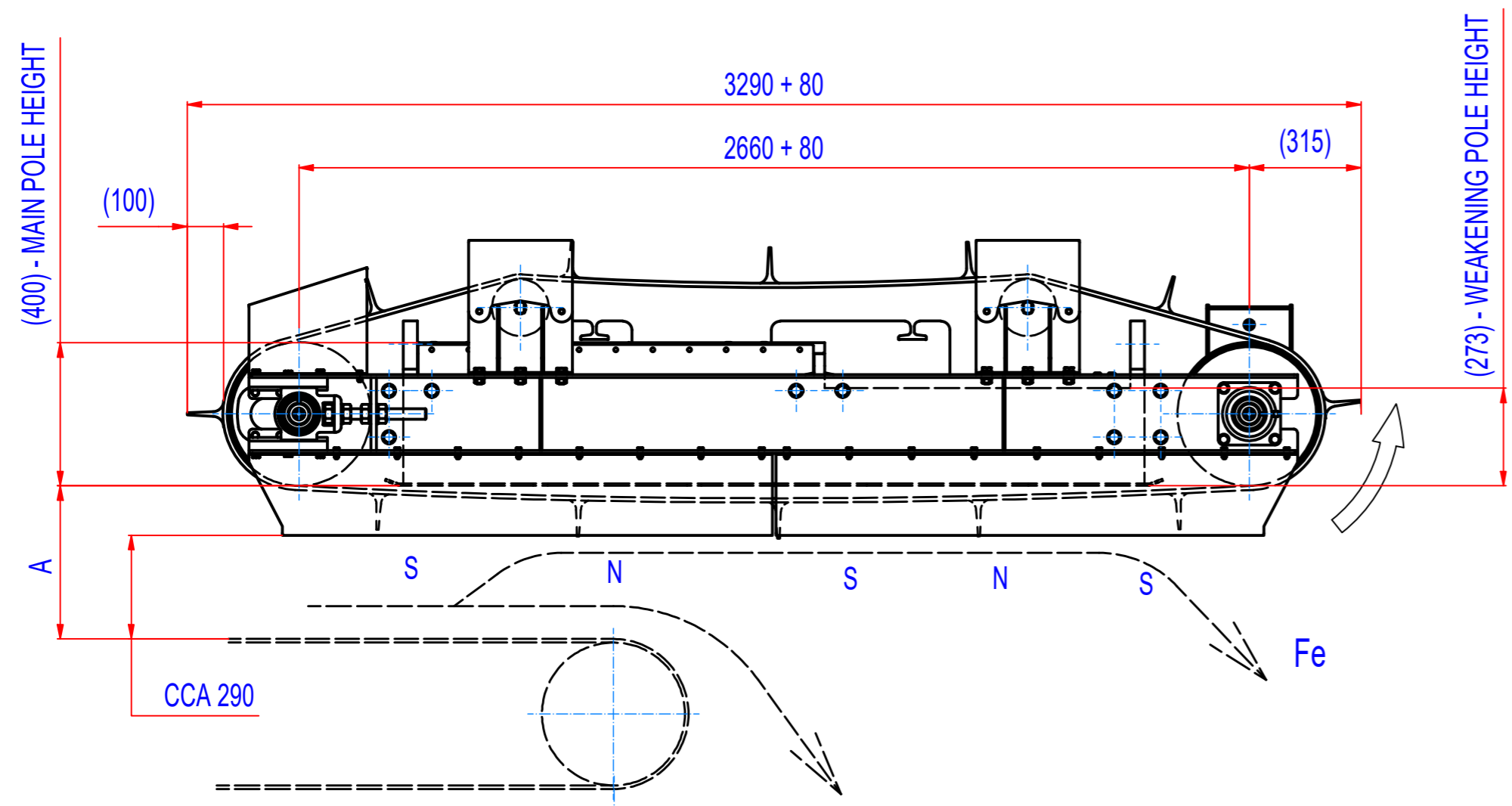


REV	DATE	BY	DESCRIPTION
-	21.03.2022	LF	ORIGINAL DRAWING



A = 470mm - max catch distance for rod Ø15, L=75mm (VDE)
A = 430mm - 400 Gs

- GEARED BOX: SEW SA77/TDRN112M4, i=20,99 (70RPM), MOTOR 4kW, 230/400V, 50Hz, IP55
- BELT SPEED 1,45 m/s
- BELT EP500/4 5+2, WIDTH 1600, LENGTH 6700, 12 CLEATS T100/10, WIDTH 1500

Sheet: A2	Extra info:	General tolerance: ISO 2768 - cL
Drawn: LF	Weight (kg): 5790.7	Drawn according: ISO268; ISO1101; ISO2553
Date: 21.03.2022		Status:
Predecessor:		Customer reference number:
Quick search: XSPB 6	<p>© All rights reserved. Reproduction is not permitted without written permission of GOUDSMIT Magnetic Systems BV</p>	Product key: ROP-F6-I-160-W-G-L-B-B-NA
Description: Overband separator, Ferrite, Size 6, W1600, Inline		Part number: ROFI160360