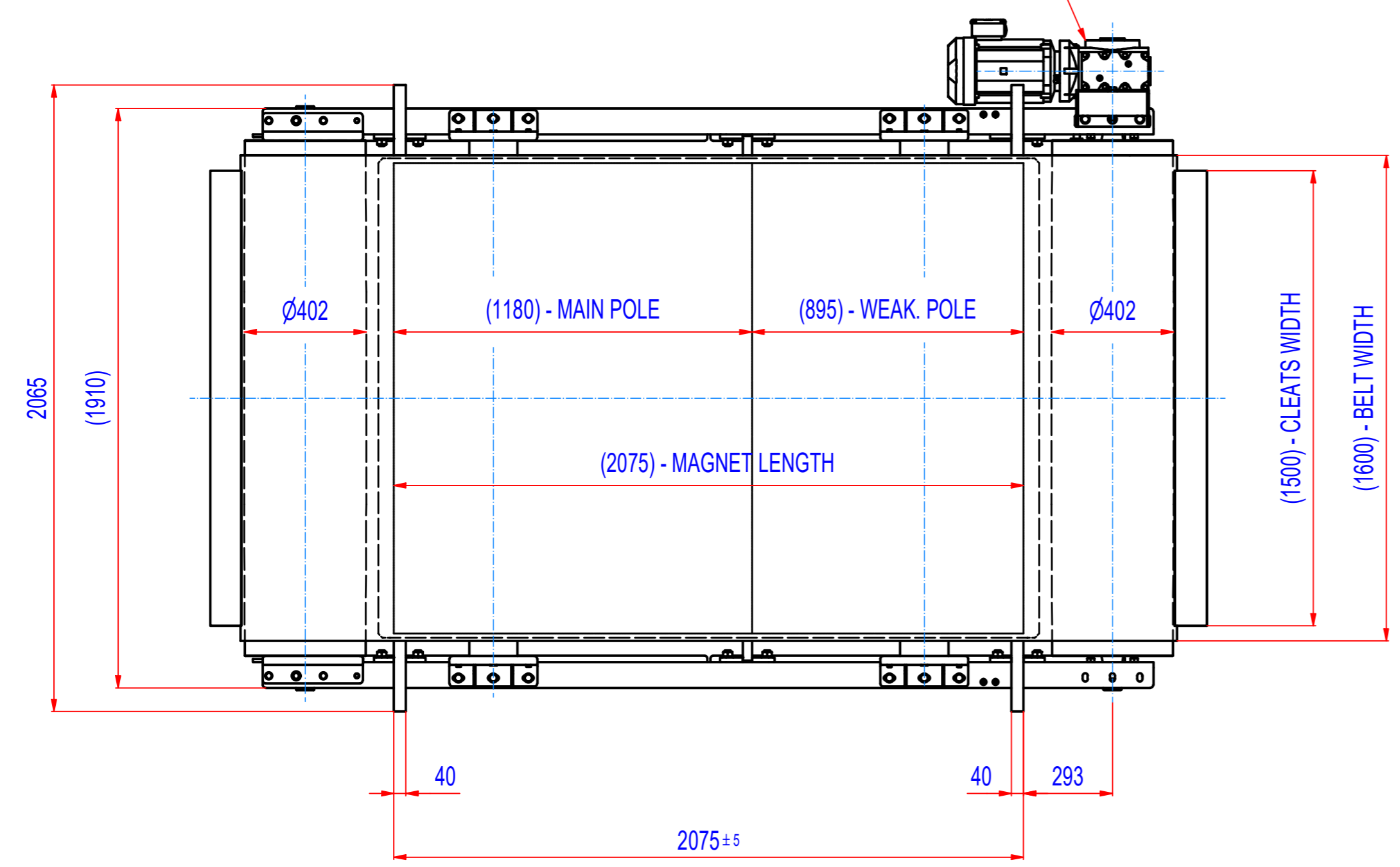
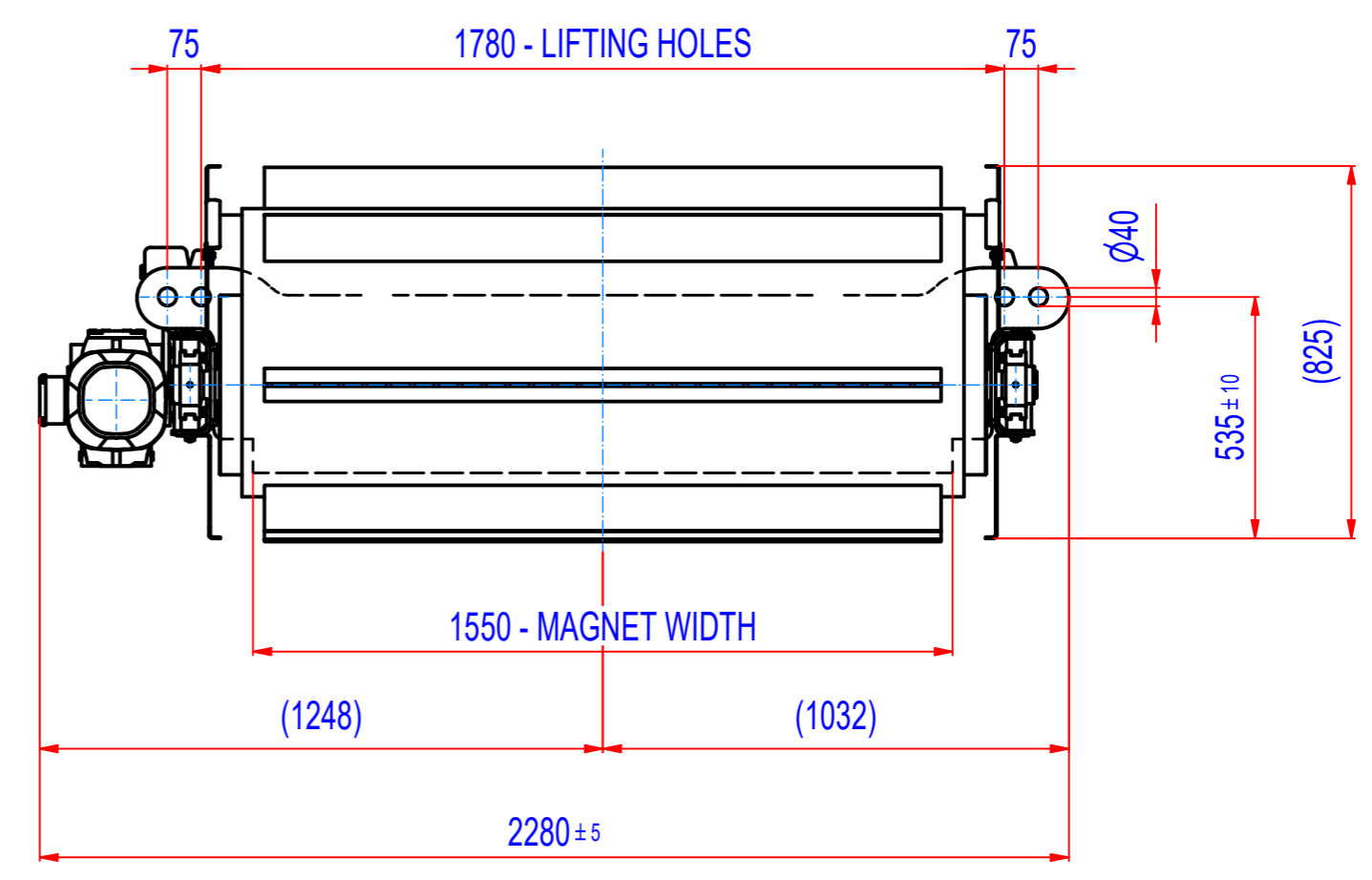
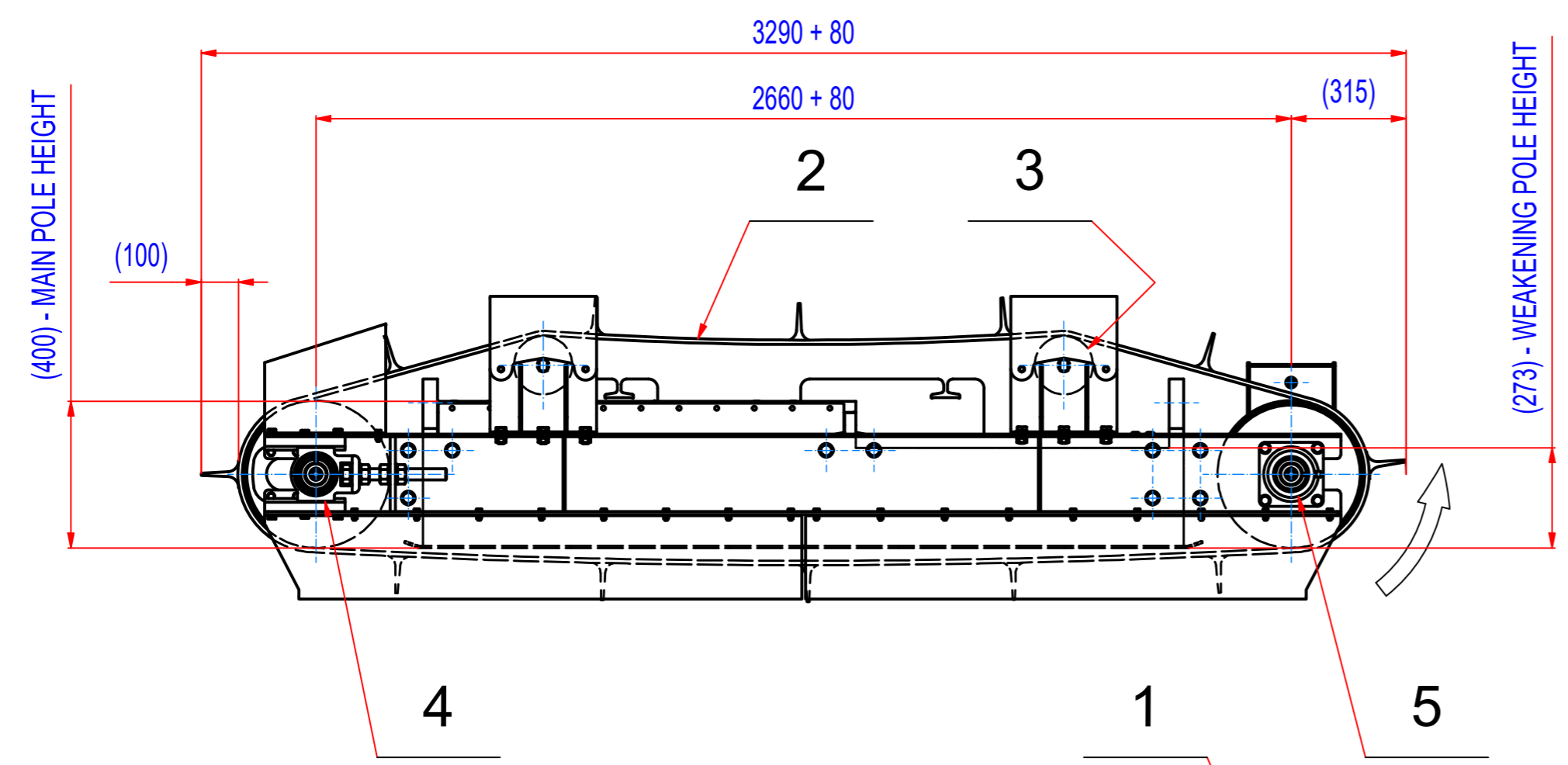


| REV | DATE | BY | DESCRIPTION |
|-----|------------|----|---|
| - | 10.04.2022 | LF | ORIGINAL DRAWING |
| | | | 11.12.2023 - REDUCTION IN NUMBER OF SPARE PARTS |



- GEARED BOX: SEW SA77/TDRN112M4, i=20,99 (70RPM), MOTOR 4kW, 230/400V, 50Hz, IP55
 - BELT SPEED 1,45 m/s
 - BELT EP500/4 5+2, WIDTH 1600, LENGTH 6700, 12 CLEATS T100/10, WIDTH 1500

| | | | | | |
|------|-------------|--|----------|-------|-----|
| 5 | 15_8700060 | BEARINGS ASSEMBLY INA PCJ 60 | | 4,1 | 2 |
| 4 | 15_8600060 | BEARINGS ASSEMBLY INA PTUE 60 | | 4,3 | 2 |
| 3 | 1510_00073 | PLAIN ROLLER d=159; L=1730; 6308 | | 52,5 | 2 |
| 2 | 45_4160009 | BELT EP 500/4 5+2, W=1600, L=6700 | RUBBER | 185 | 1 |
| 1 | M040007012 | SEW SA77/TDRN112M4, 4kW, i=20,99 (70RPM) | | 91,6 | 1 |
| POZ. | Č. SOUČÁSTI | POPIS | MATERIÁL | HMOT. | MN. |

| | | |
|--|--|--|
| Sheet: A2 Drawn: LF Date: 10.4.2022 Predecessor: Quick search: XSPB 6 Description: SPARE PARTS FOR ROFI160360 | Extra info: © All rights reserved. Reproduction is not permitted without written permission of GOUDSMIT Magnetic Systems BV | General tolerance: ISO 2768 - cL Drawn according: ISO268; ISO1101; ISO2553 Status: Customer reference number: Product key: ROP-F6-I-160-W-G-L-B-B-NA Part number: ROFI160360_SP Rev: |
|--|--|--|