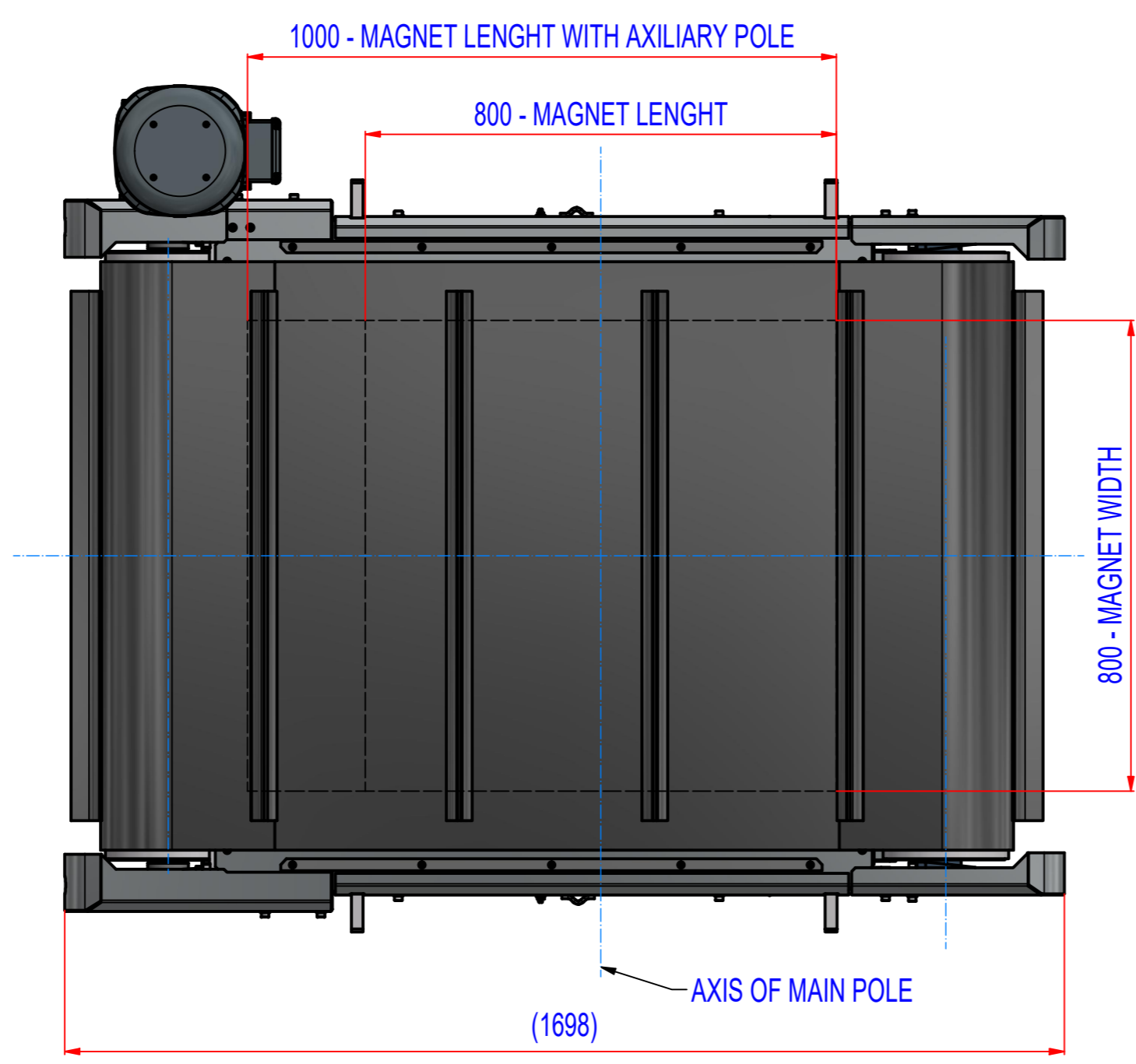
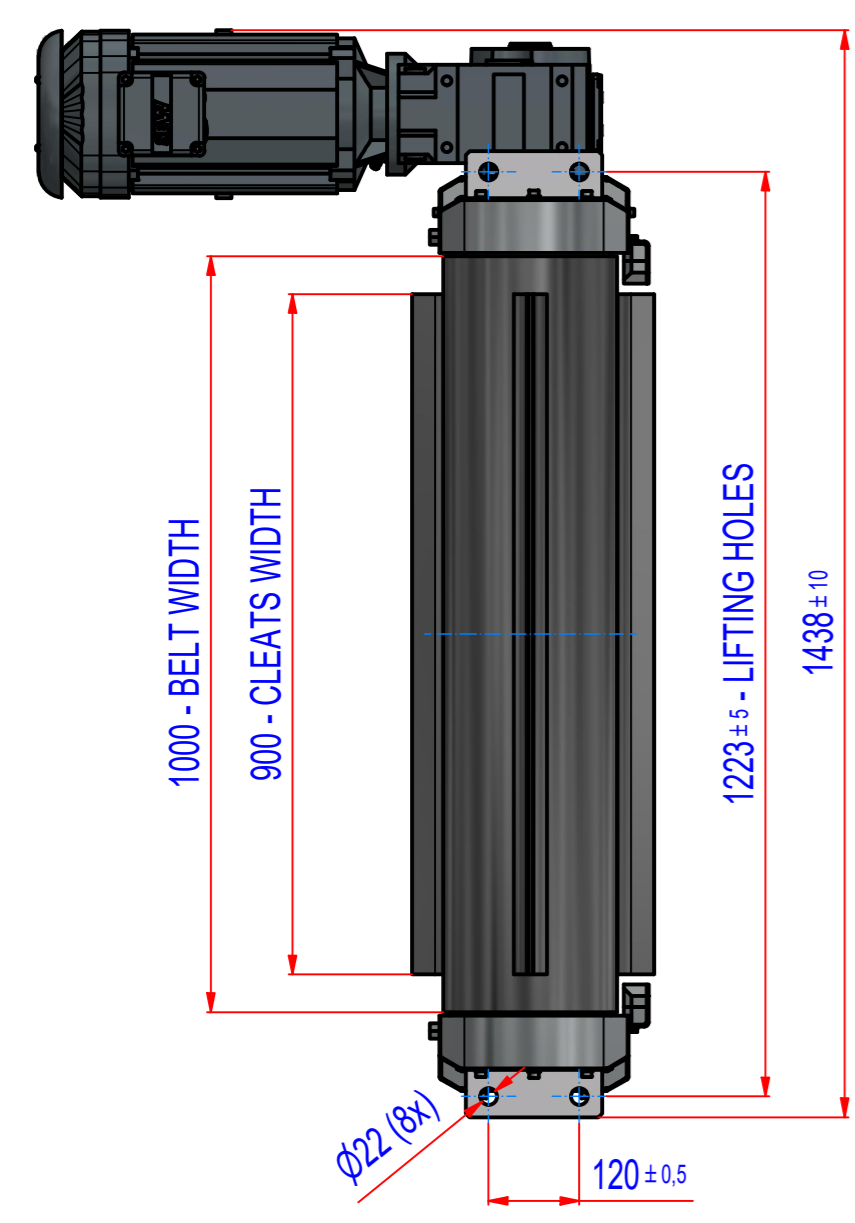
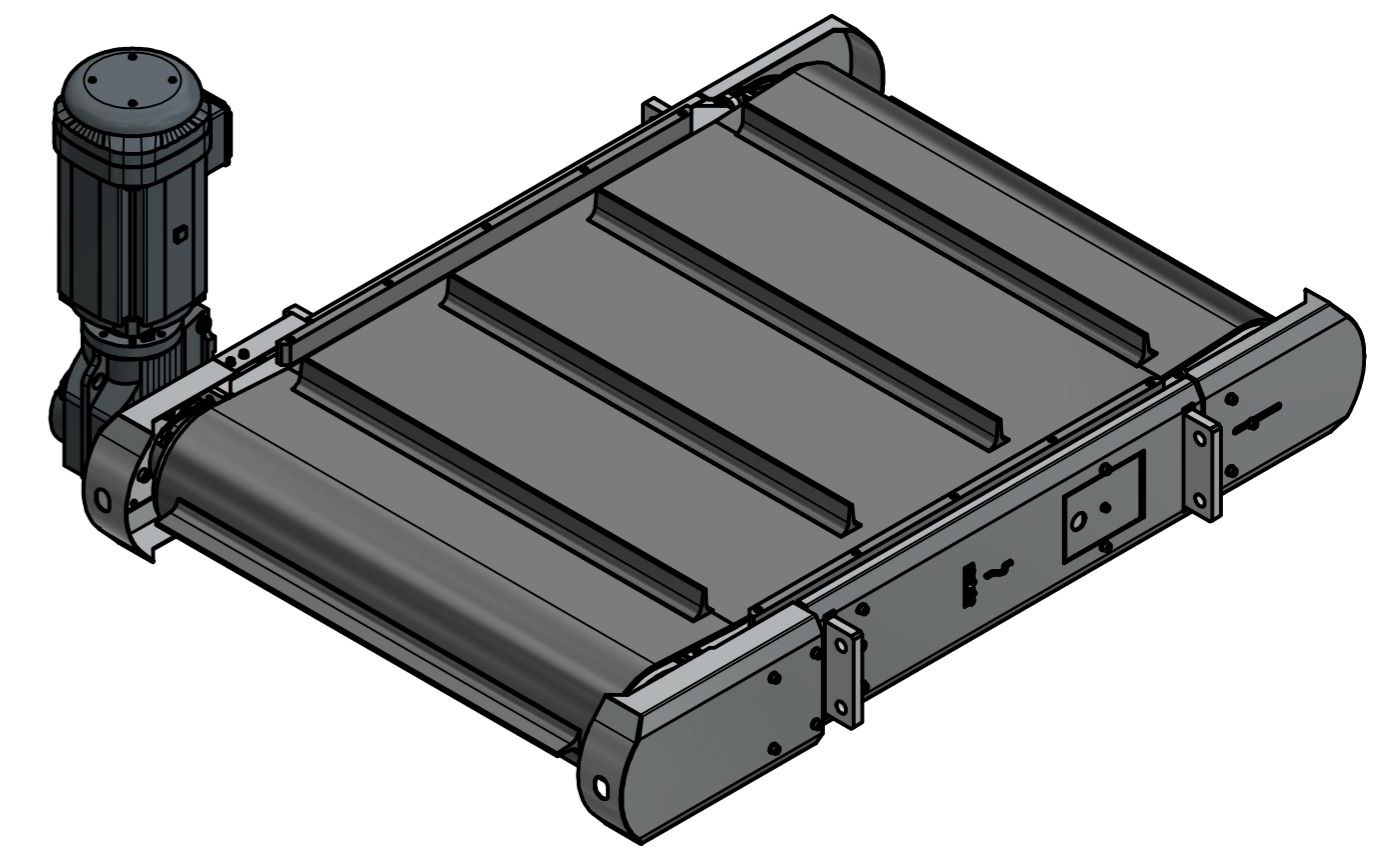
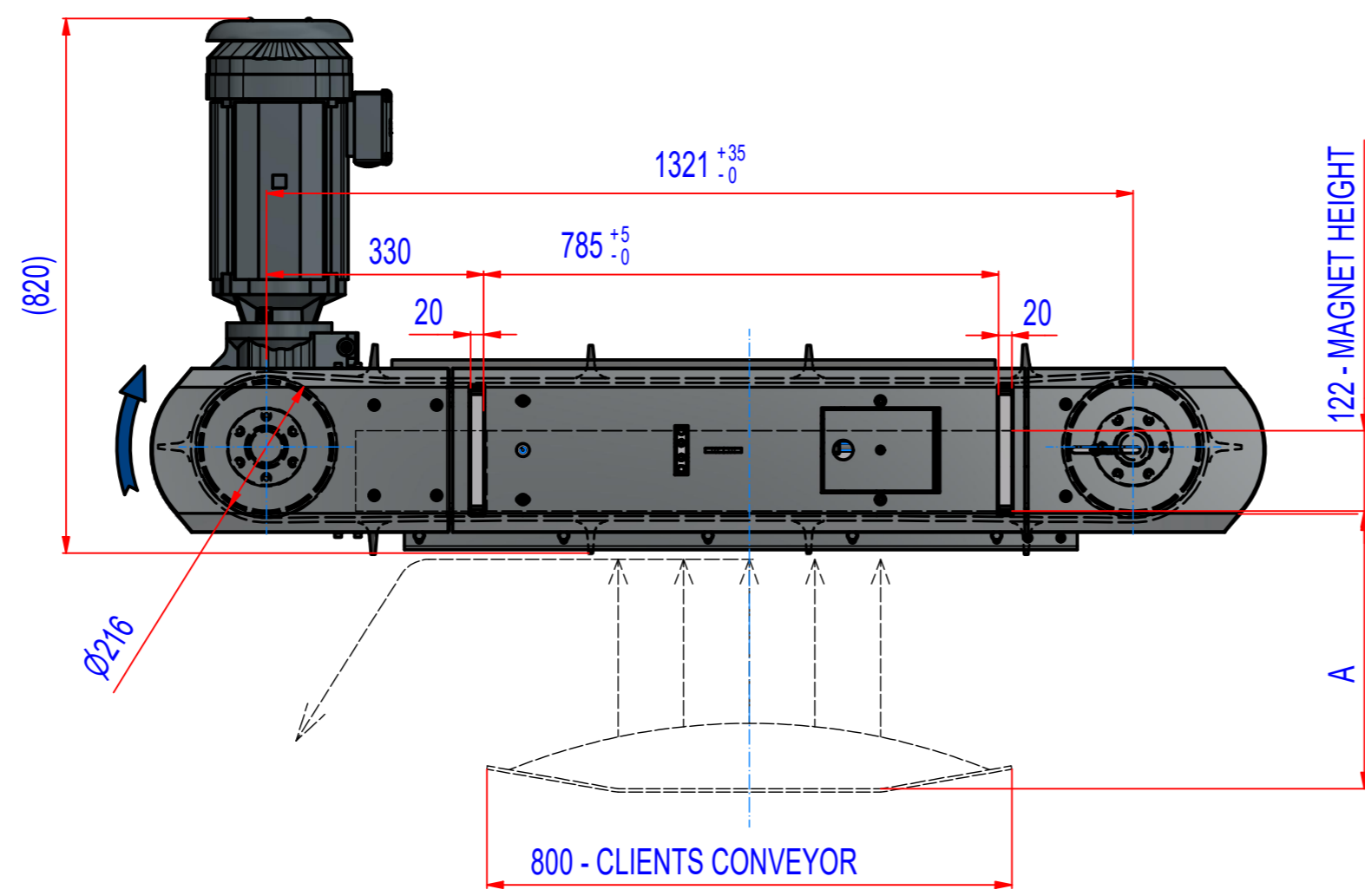


REV	DATE	BY	DESCRIPTION
-	27.04.2022	PH	ORIGINAL DRAWING



A = 440 mm - max. catch distance for rod $\varnothing 15$, L=75 mm (VDE)
A = 375 mm - 400 Gs

MAGNET : MAGNETS NdFeB, FERRITE, WATERPROOF
FRAME: MADE FROM AISI 304
PROTECT PLATES: AISI 304, 2-3mm
BELT TYPE: EP250/2 4+2, WIDTH 1000, LENGTH 3345,
10 CLEATS T50/20, WIDTH 900, COMPLETELY HOT VULCANISED
MOTOR: SEW KA67DRN132S4/C, i=8,37(175RPM), 230/400V, 5,5kW, IP55
FINISH: PAINTED / GRIT BLASTED (covering, frame)
ROLLERS: STEEL, WITH CROWNING, RAL7022 (UMBRA GREY)
ACCESSORIES: FRAME SIDE COVERS
GREASING FROM LEFT AND RIGHT SIDE

 Drawn: PH Date: 27.04.2022 Predecessor: RONC120351 Quick search:	Sheet: A2 Weight (kg): 883.7	Extra info: © All rights reserved. Reproduction is not permitted without written permission of GOUDSMIT Magnetic Systems BV	General tolerance: ISO 2768 - cL Drawn according: ISO268; ISO1101; ISO2553 Status: Customer reference number: Product key: ROP-N5-C-080-W-G-R-B-B-M-NA Part number: RONC080351 Rev: -
Description: Overband magnet, NdFeB, size.5, W=800, gear motor			