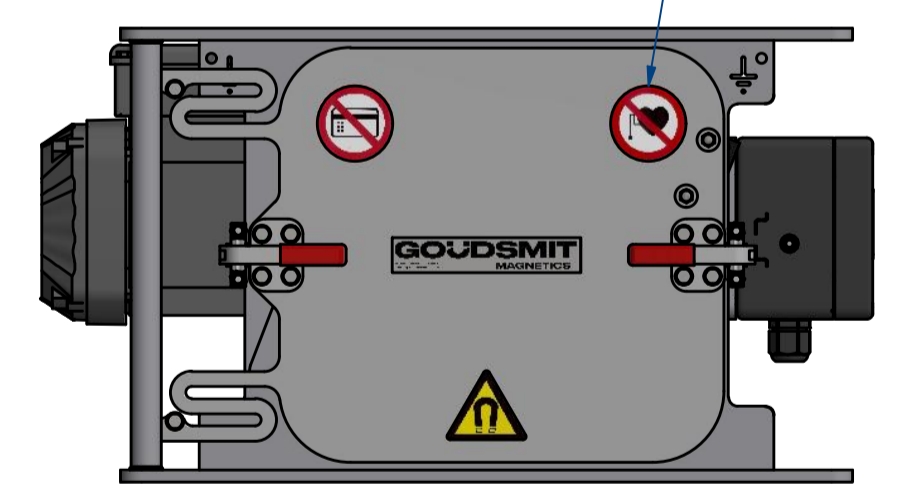
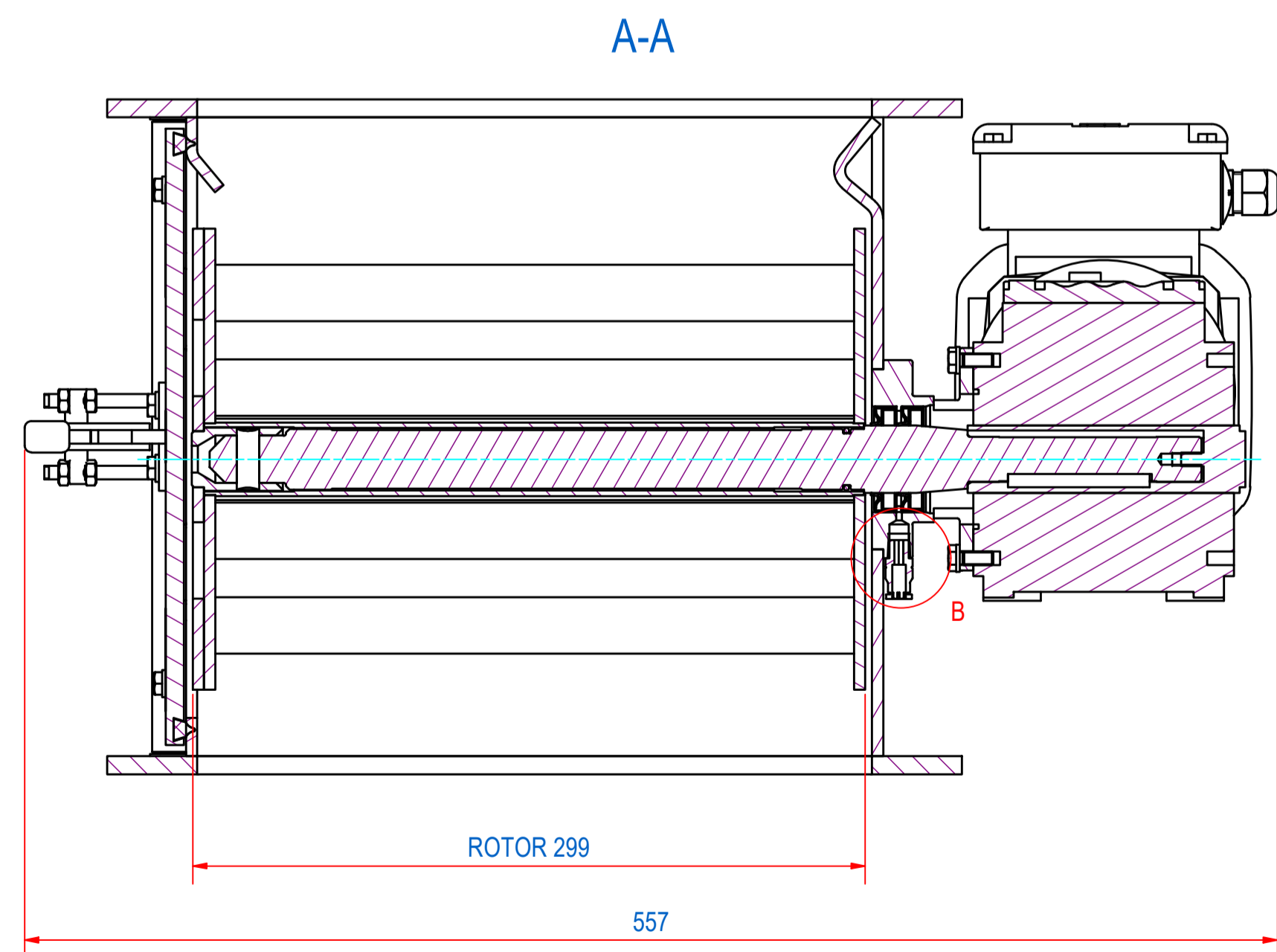
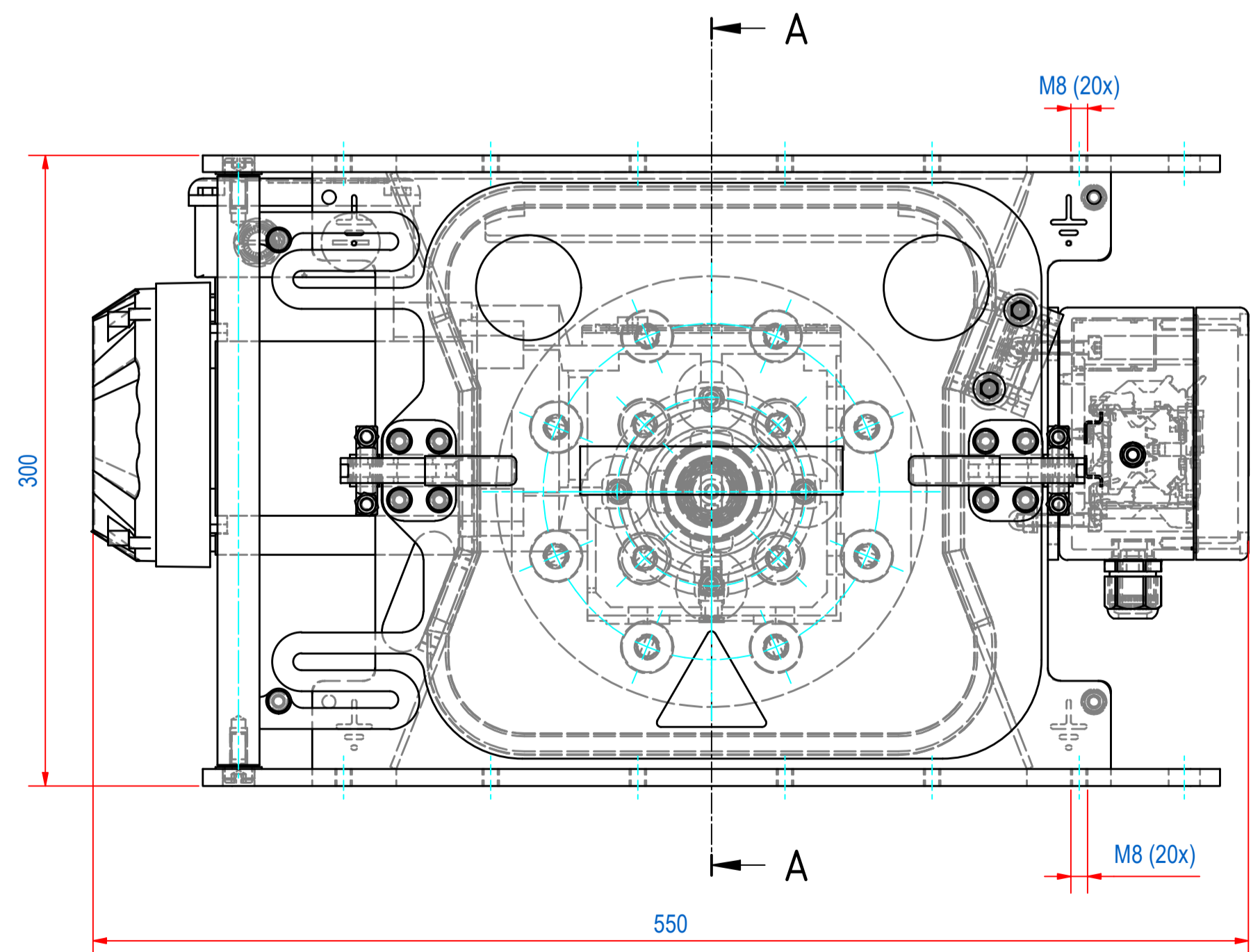
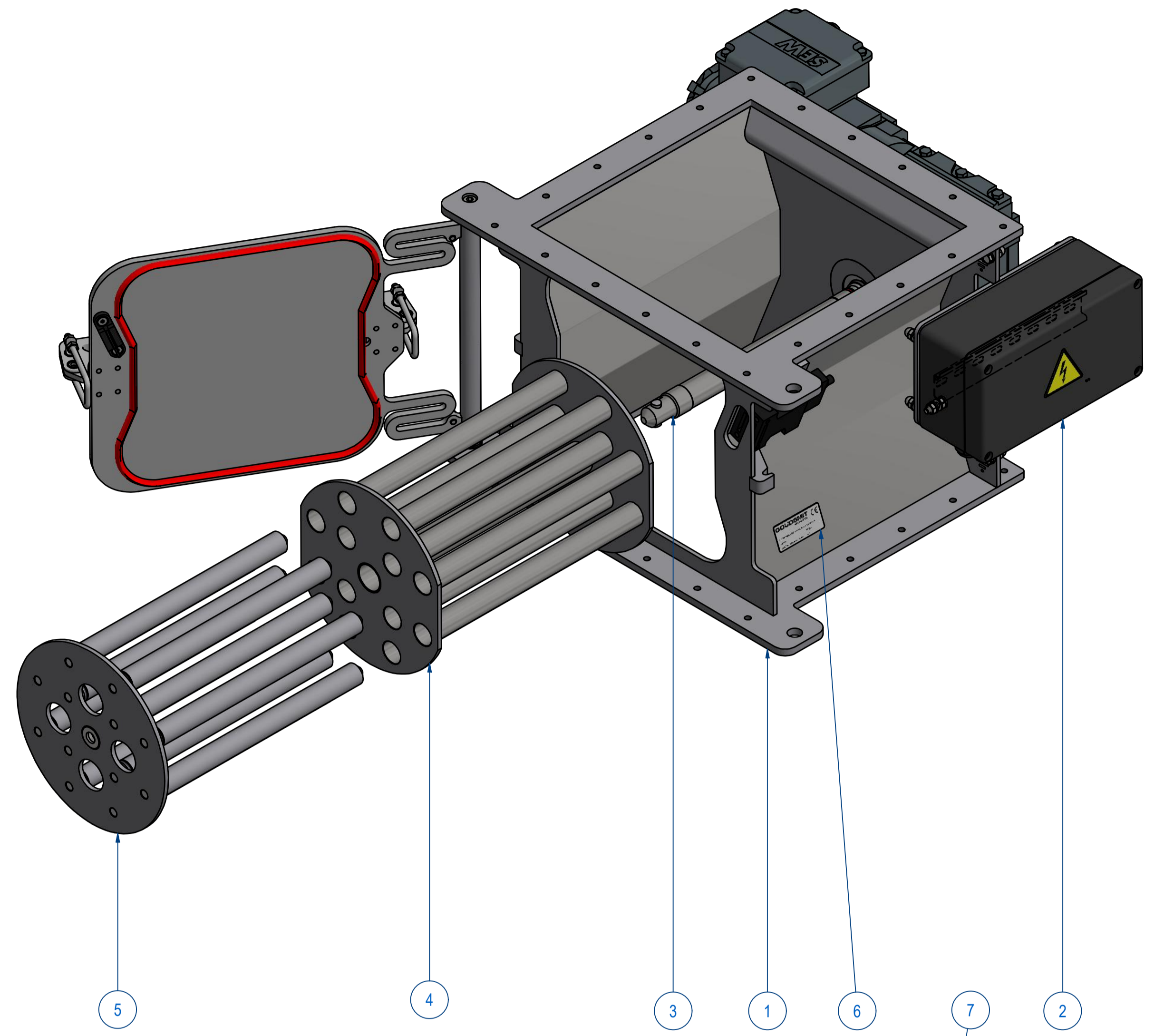
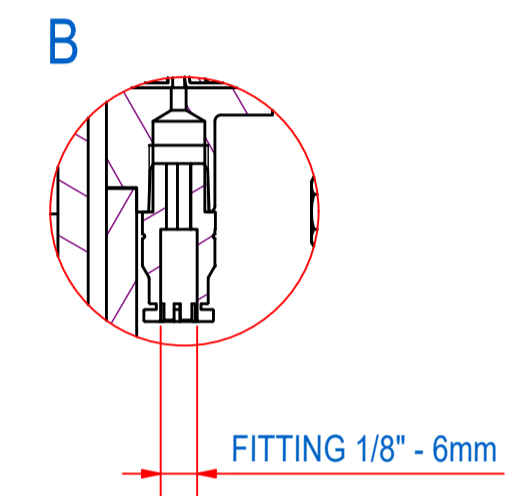
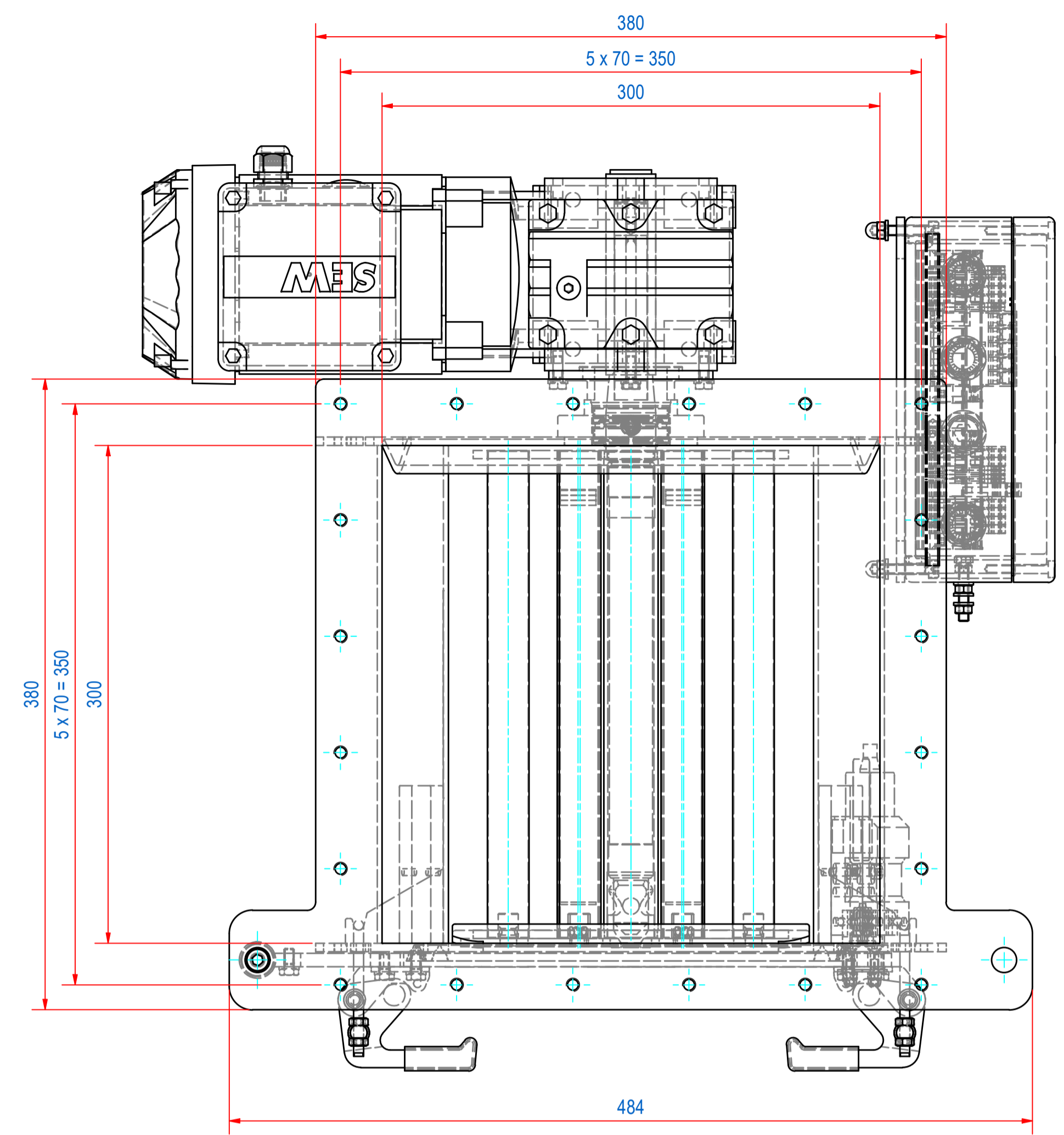


REV	DATE	BY	DESCRIPTION
B	7-10-2013	CR	ITEM 5 ADDED, VIEW 'B' ADDED
C	1-10-2018	CR	TYPE PLATE CHANGED, E0090153 WAS S190122 AND WARNING STICKERS ADDED
D	17-4-2020	CR	DIMENSIONS MOTOR CHANGED



ITEM	QTY	PART NUMBER	DESCRIPTION	Dimensions
8	1	MO03703503	WA30 DRN71M4 35RPM	
7	1	E0090159	STICKERS FOR SCRA/SCRB	
6	1	E0090153	TYPE PLATE SECR - NO ATEX	
5	1	E0047666	FRONT PLATE WITH 12B NdFeB	
4	1	A240050	EXTRACTOR 12 BARS CR3030	
3	1	A240060	SHAFT ASSY CR3030	
2	1	A240059	TERMINAL BOX MOUNT ASSY	
1	1	A240057	HOUSE + DOOR CR3030	

RAW MAT.	Quantity	Material Number	Material Description	Length (mm)	Width (mm)
1	1				

Sheet: A1	Extra info: Cleanflow magnet rotating Manual cleaning	General tolerance: ISO 2768 - mK
Drawn: FS	Weight (kg): 54	Drawn according: ISO268; ISO1101; ISO2553
Date: 27-5-2010	Source: False	Status: Standard
Spare part: False	Quick search: CR3030	Customer reference number: SCRA3030021
Description: SECR-B-3030-12E-N-NA-F1m-B-B		Document number: SCRA3030021
		Doc.Rev: D
		Part number: SCRA3030021
		Rev: D