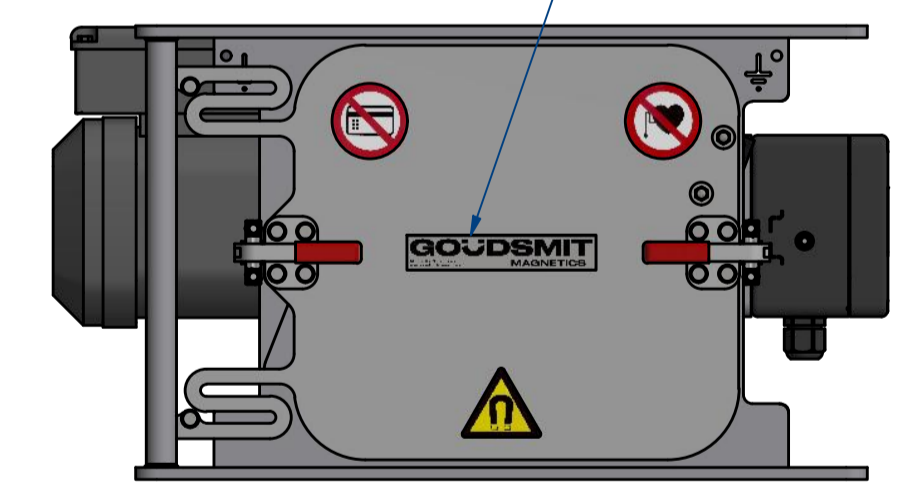
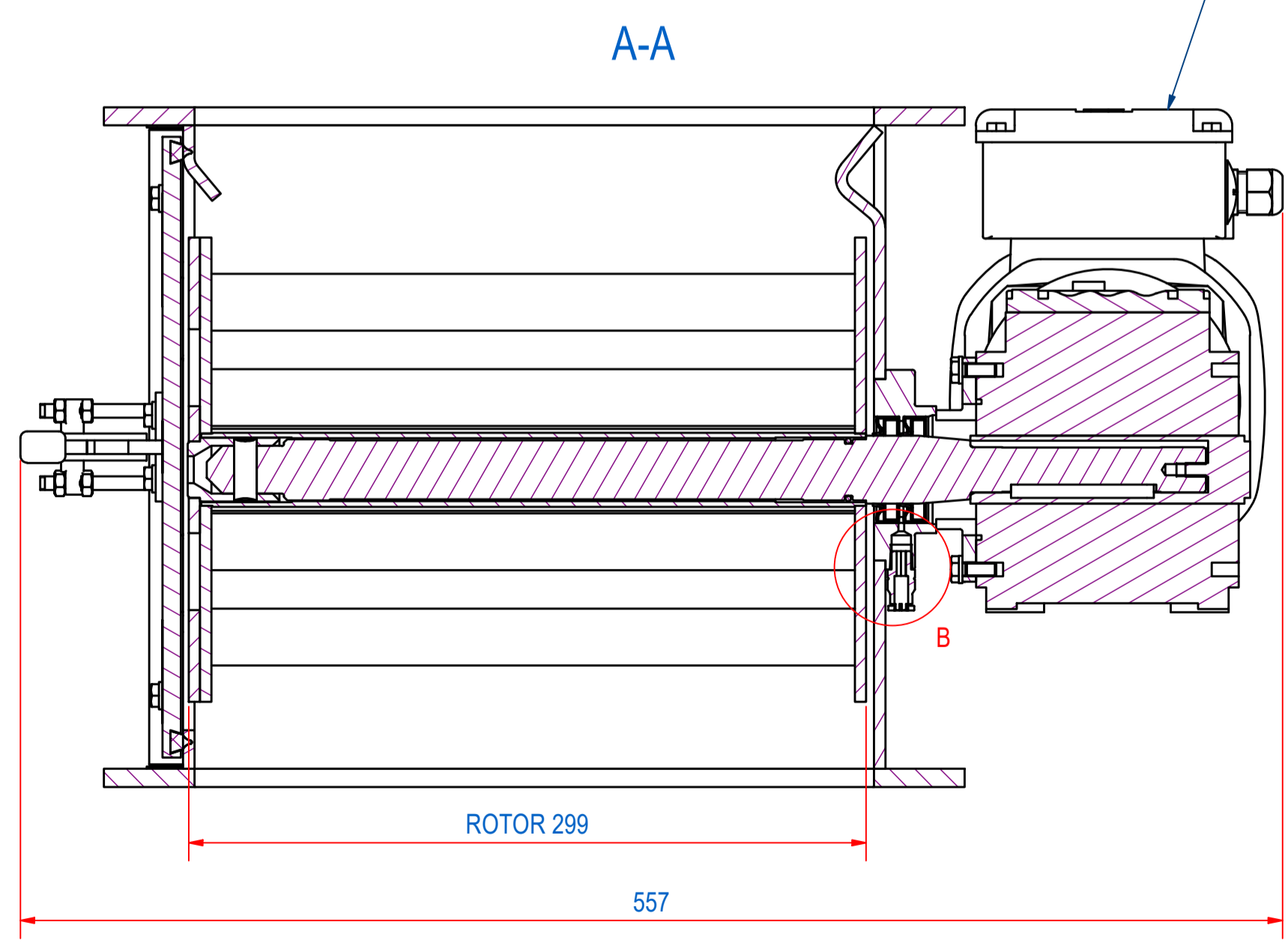
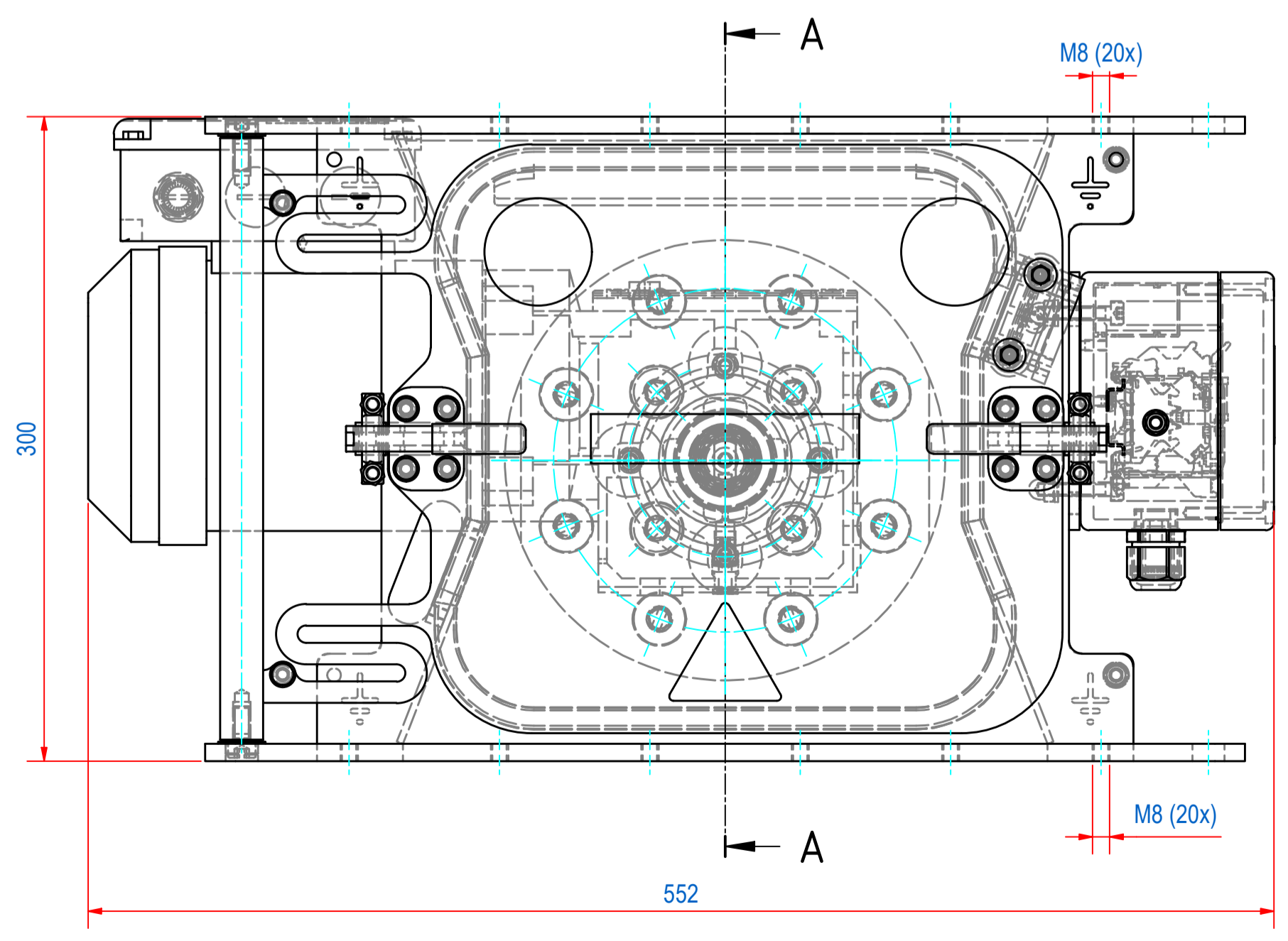
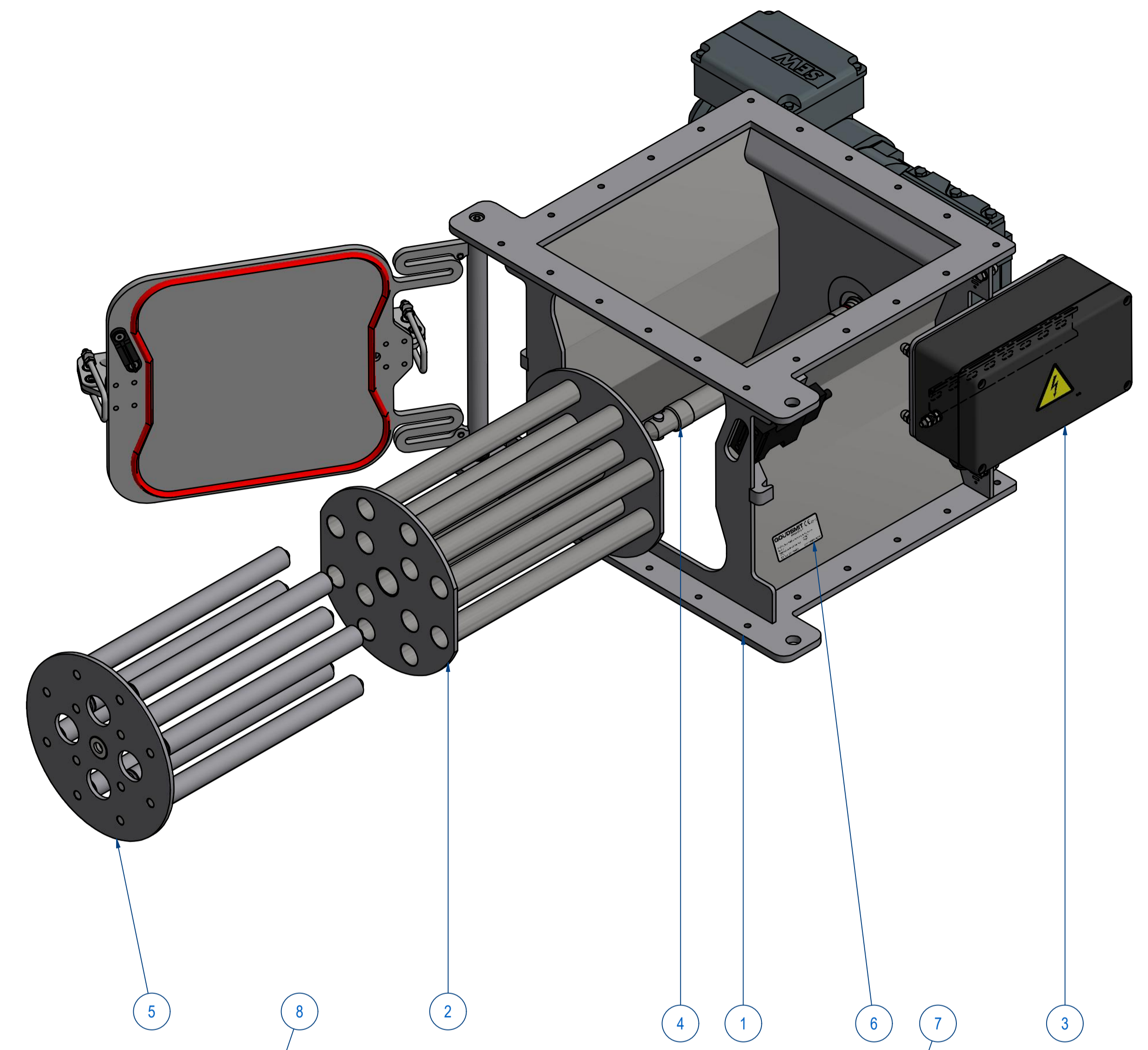
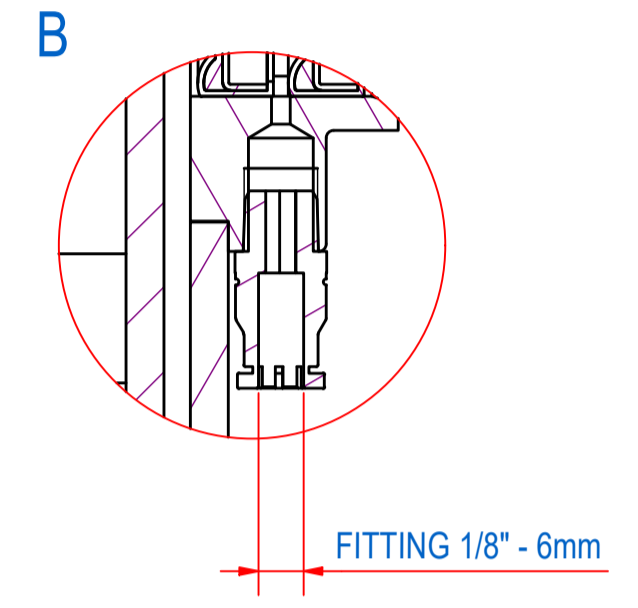
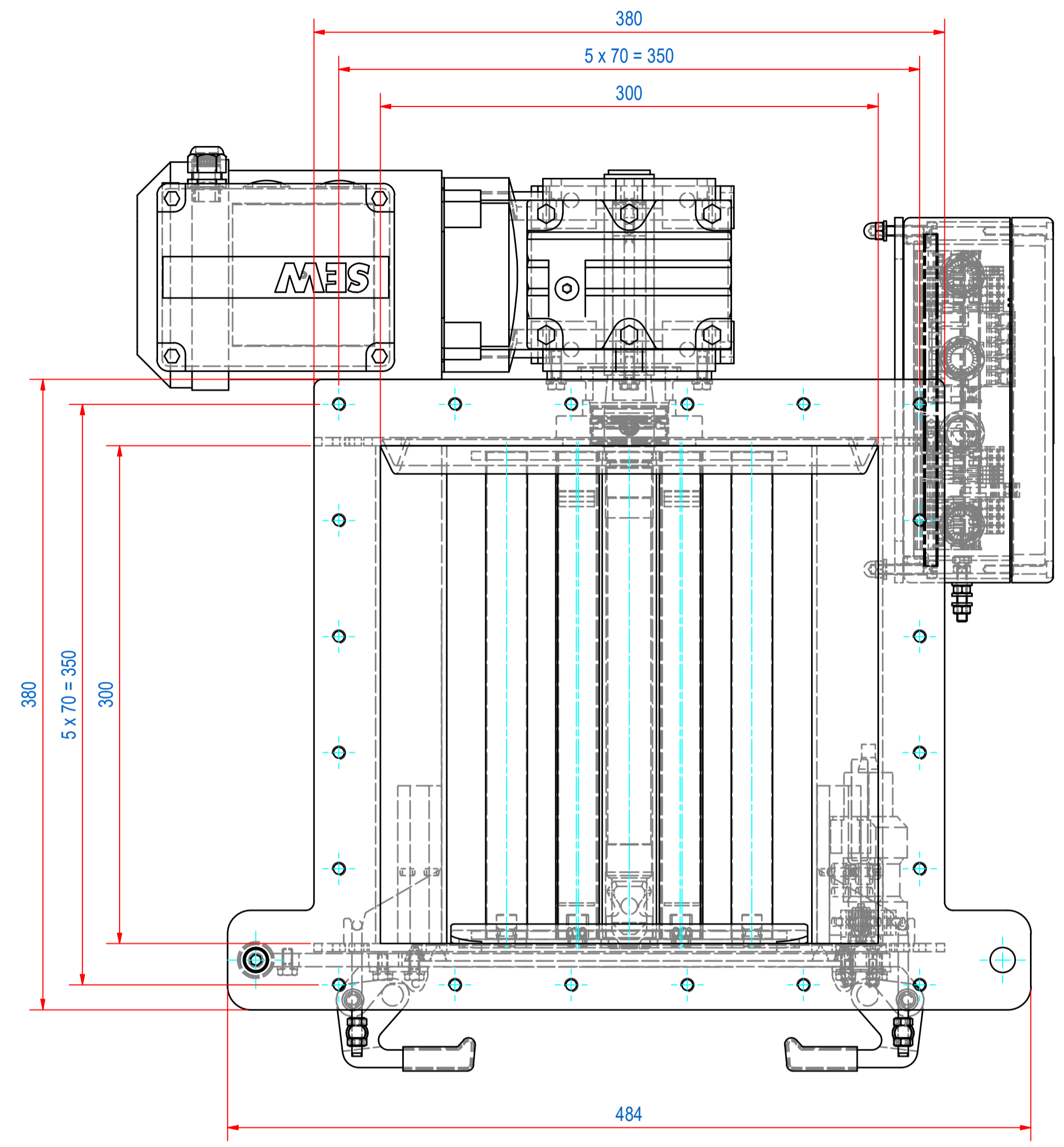


| REV | DATE | BY | DESCRIPTION |
|-----|-----------|----|--|
| A | 7-10-2013 | CR | TEXT ADDED, ITEM 5 ADDED, VIEW 'B' ADDED |
| B | 2-10-2018 | CR | TYPE PLATE CHANGED, E0090155 WAS E0006483 AND WARNING STICKERS ADDED |
| C | 17-4-2020 | CR | DIMENSIONS MOTOR CHANGED |



THIS DRAWING CORRESPONDS WITH
ATEX SCHEDULE DRAWING **M53674**

| ITEM | QTY | PART NUMBER | DESCRIPTION | Dimensions |
|------|-----|-------------|--------------------------------------|------------|
| 8 | 1 | MO03704202 | WA30/112GD EDRS71M4/2GD/KCC/AL 42RPM | |
| 7 | 1 | E0090159 | STICKERS FOR SCRA/SCRB | |
| 6 | 1 | E0090155 | TYPE PLATE SECR II 1/2D c T140°C | |
| 5 | 1 | E0047666 | FRONT PLATE WITH 12B NdFeB | |
| 4 | 1 | A240060 | SHAFT ASSY CR3030 | |
| 3 | 1 | A240059 | TERMINAL BOX MOUNT ASSY | |
| 2 | 1 | A240050 | EXTRACTOR 12 BARS CR3030 | |
| 1 | 1 | A240057 | HOUSE + DOOR CR3030 | |

| RAW MAT. | Quantity | Material Number | Material Description | Length (mm) | Width (mm) |
|----------|----------|-----------------|----------------------|-------------|------------|
| 1 | 1 | | | | |

| | | |
|---|---|--|
| Sheet: A1 Drawn: FS Date: 26-5-2010 Spare part: False Quick search: CR3030 | Extra info: <i>Cleanflow magnet rotating</i> <i>Manual cleaning</i> Weight (kg): 55 Source: GOUDSMIT MAGNETICS <small>© All rights reserved. Reproduction is not permitted without written permission of GOUDSMIT Magnetic Systems BV</small> | General tolerance: ISO 2768 - mK Drawn according: ISO268; ISO1101; ISO2553 Status: Standard Customer reference number: SCRA3030022 Document number: SCRA3030022 Part number: SCRA3030022 |
|---|---|--|