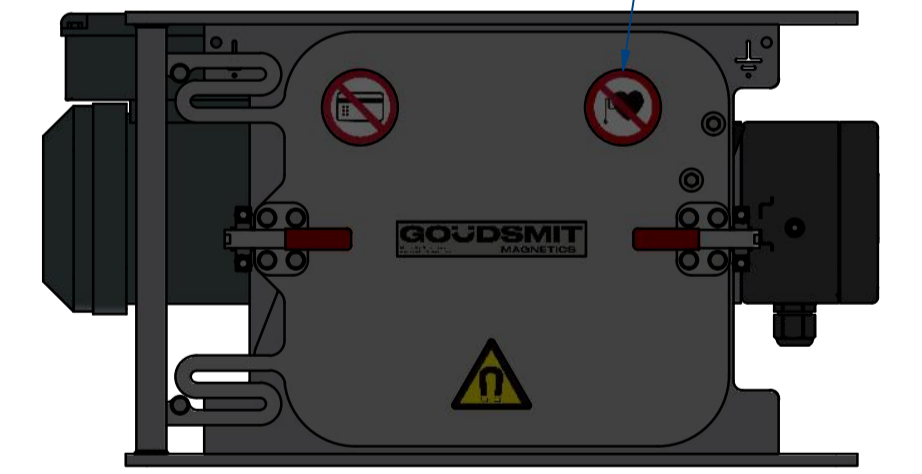
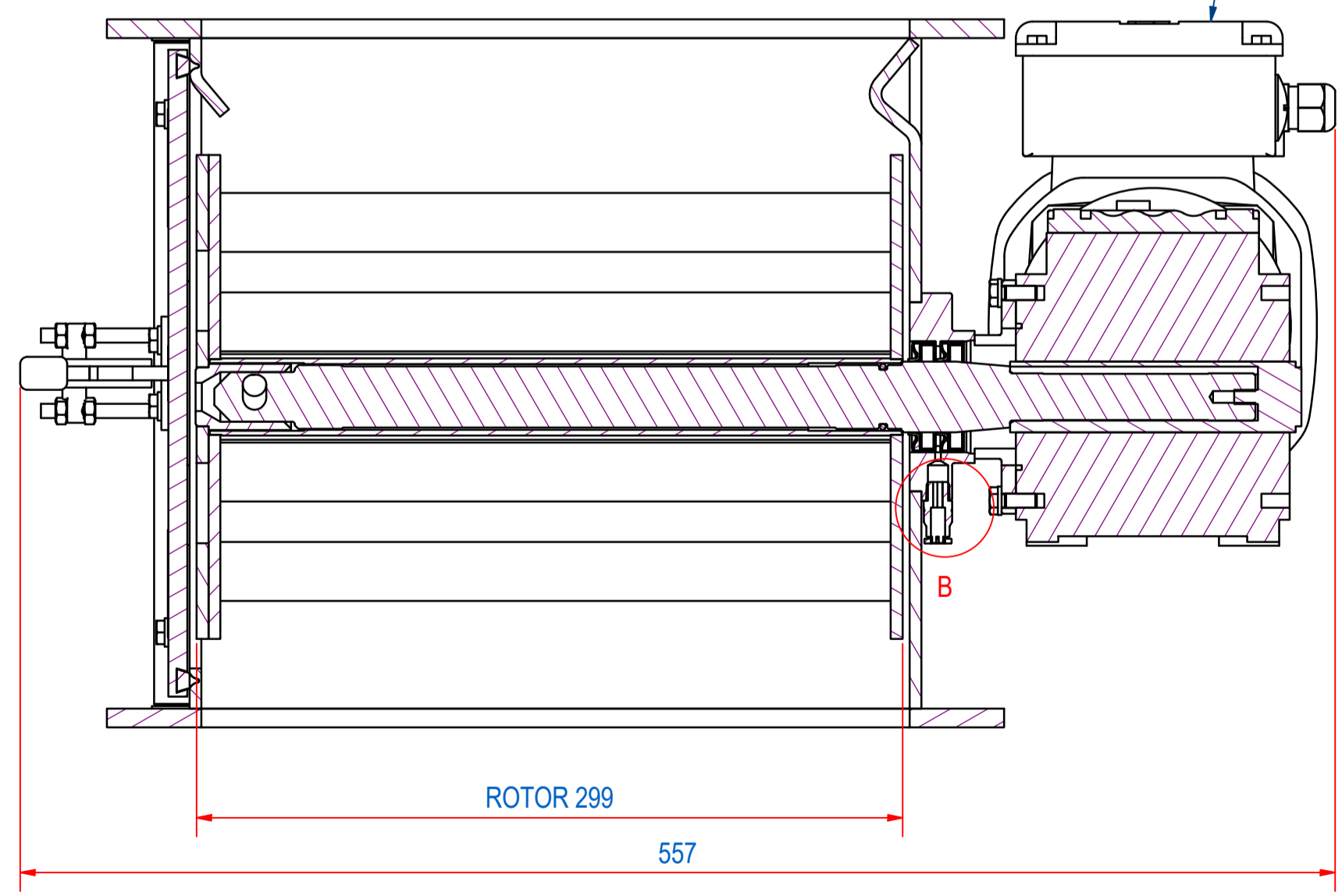
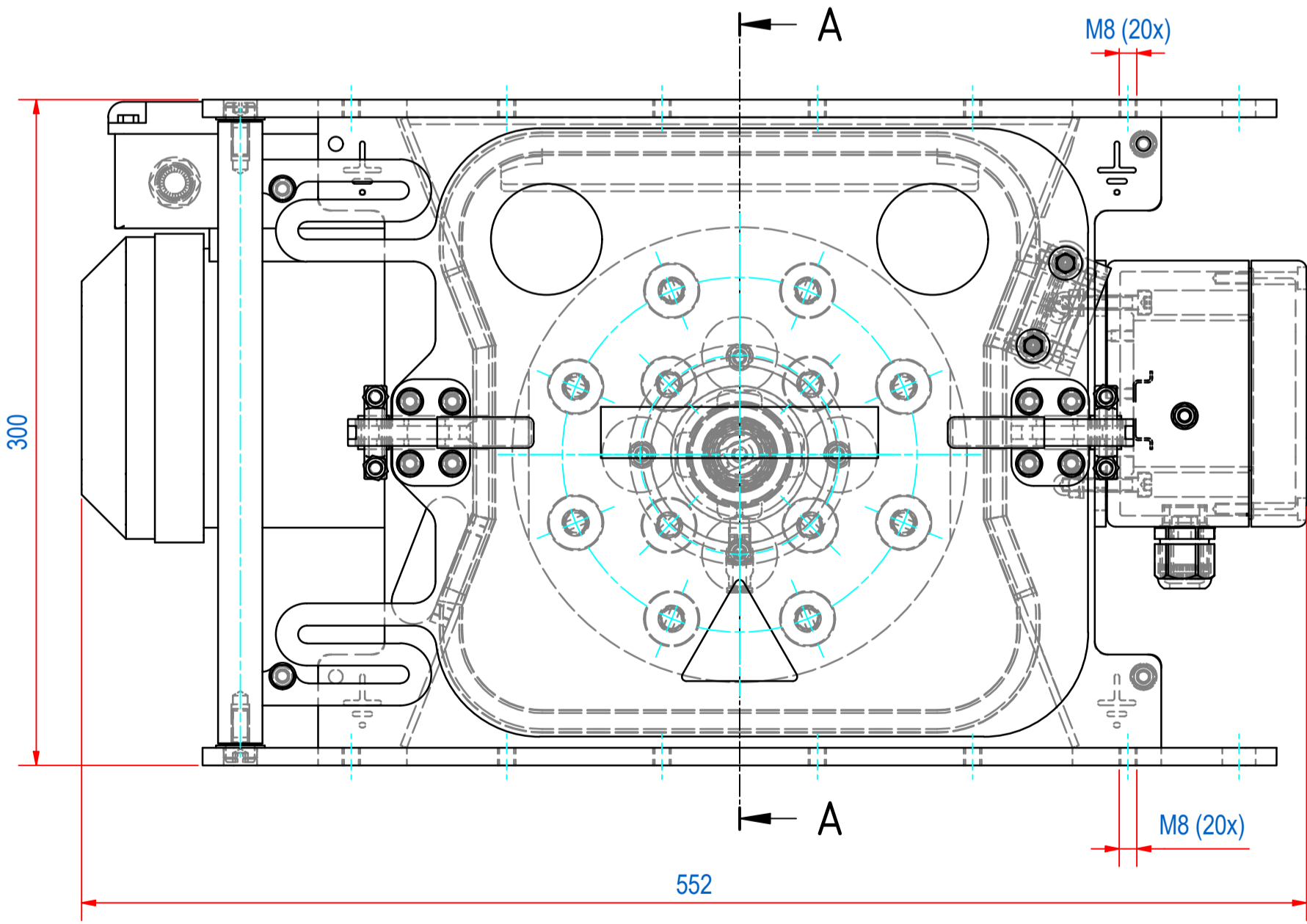
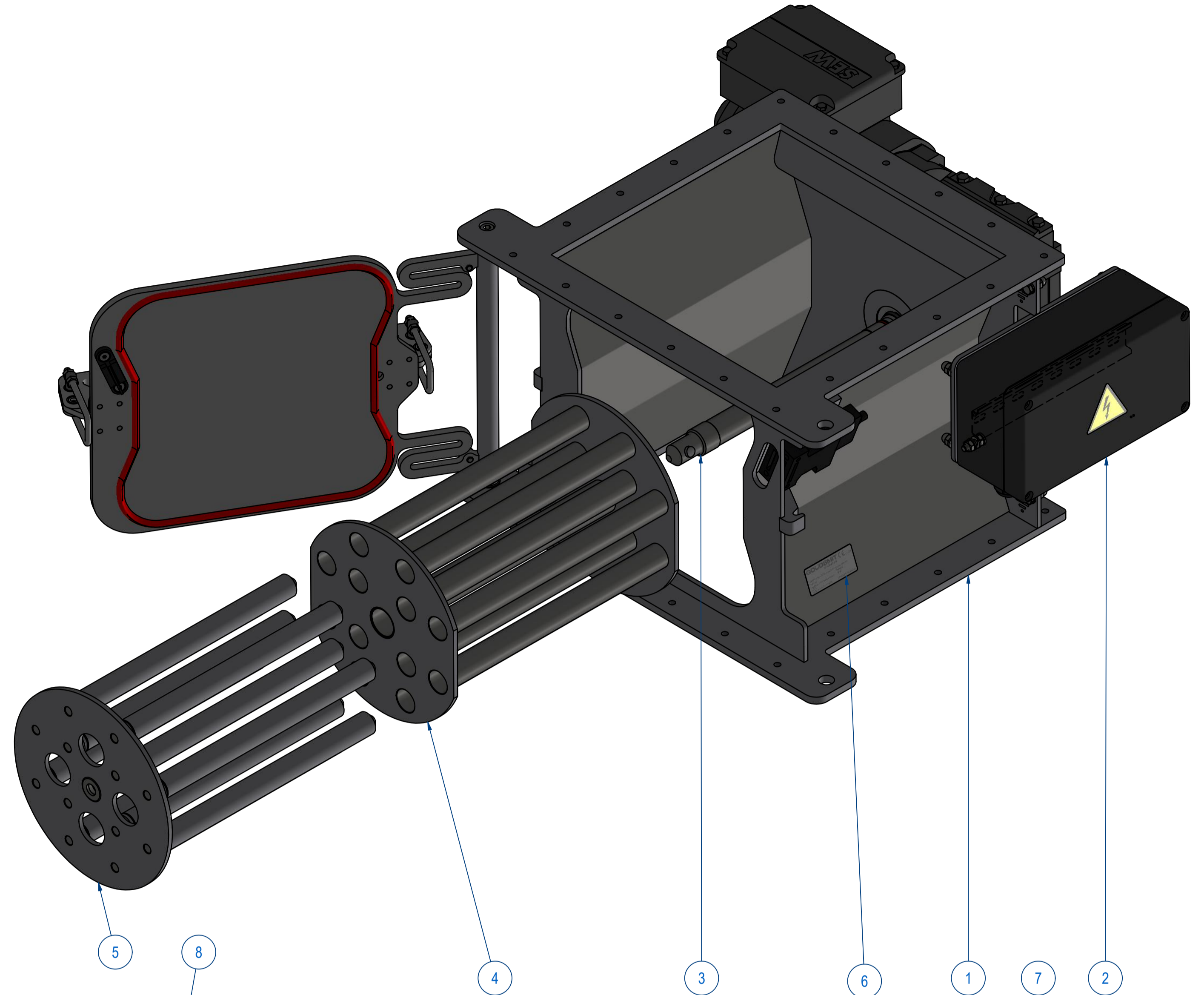
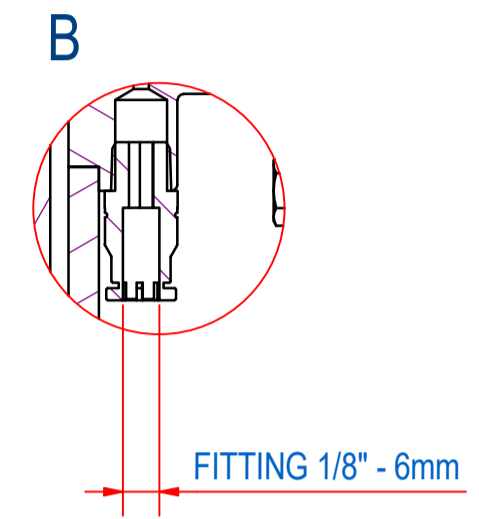
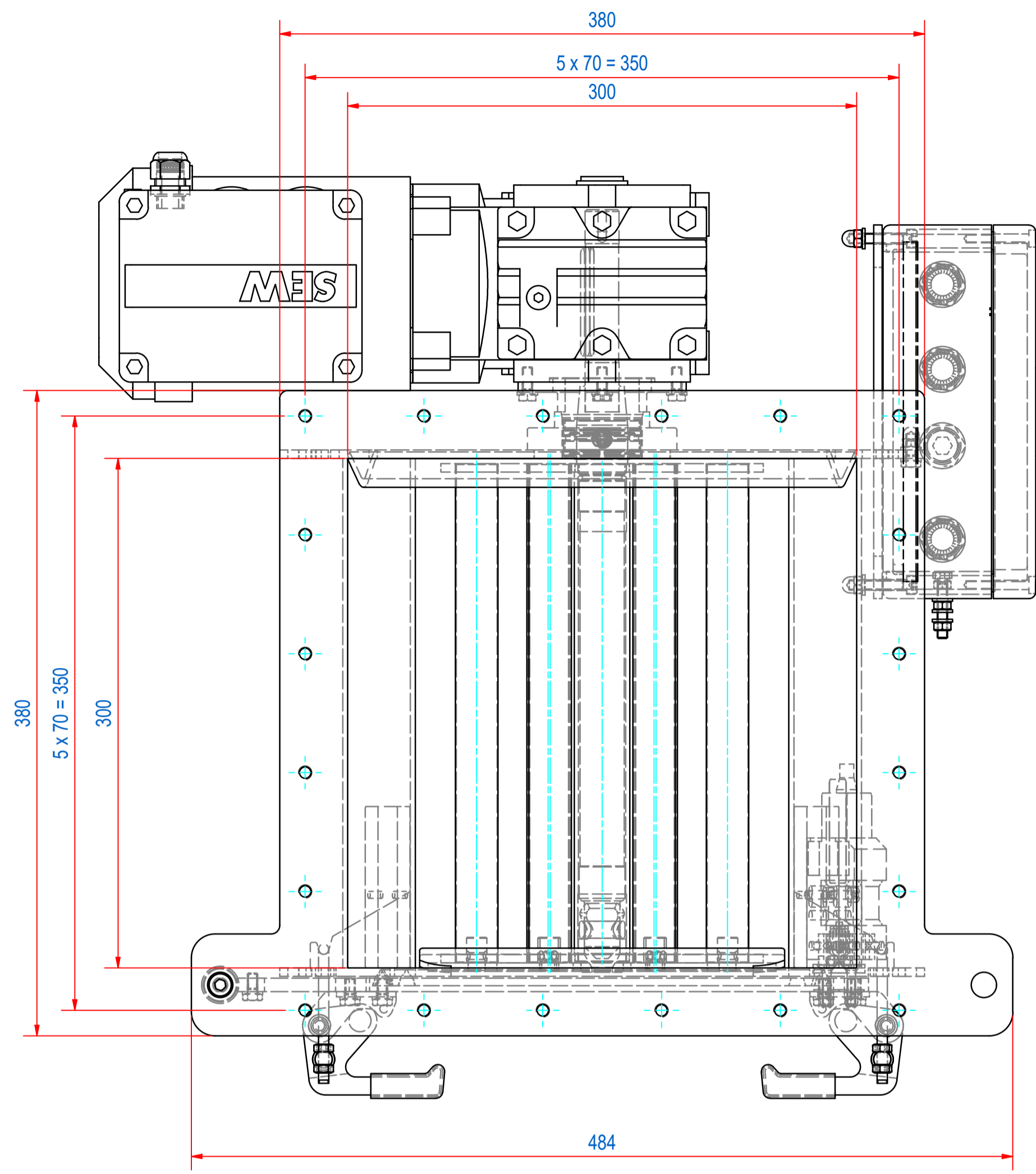


REV	DATE	BY	DESCRIPTION
B	1-3-2017	CR	DESCRIPTION CHANGED, EXTRACTOR AND FRONT WITH BARS ADDED
C	31-5-2018	CR	TYPE PLATE CHANGED: E0090155 WAS E0006483 AND WARNING STICKERS ADDED
D	17-4-2020	CR	DIMENSIONS MOTOR CHANGED



THIS DRAWING CORRESPONDS WITH  
ATEX SCHEDULE DRAWING M53674

ITEM	QTY	PART NUMBER	DESCRIPTION	Dimensions
8	1	MO03704202	WA30/II2GD EDRS71M4/2GD/KCC/AL 42RPM	
7	1	E0090159	STICKERS FOR SCRA/SCRB	
6	1	E0090155	TYPE PLATE SECR II 1/2D c T140°C	
5	1	E0047666	FRONT PLATE WITH 12B NdFeB	
4	1	A240050	EXTRACTOR 12 BARS CR3030	
3	1	A240060	SHAFT ASSY CR3030	
2	1	A240059	TERMINAL BOX MOUNT ASSY	
1	1	A240057	HOUSE + DOOR CR3030	

RAW MAT.	Quantity	Material Number	Material Description	Length (mm)	Width (mm)
1	1				

Sheet: A1	Extra info: Cleanflow magnet rotating Manual clearing	General tolerance: ISO 2768 - mK
Drawn: CR	Weight (kg): 55	Drawn according: ISO268; ISO1101; ISO2553
Date: 2-5-2013	Source: False	Status: Standard
Spare part: False	Quick search: CR3030	Customer reference number: SCRB3030022
Description: SECR-B-3030-12E-N-Ex-F5m-B-B		Doc. Rev: D
		Rev: D

A-A