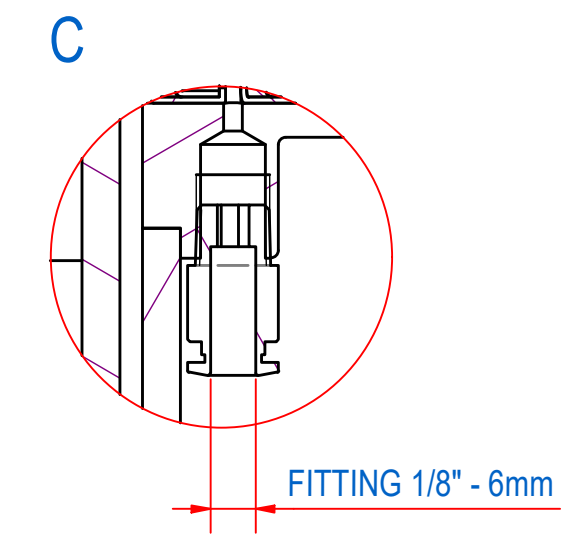
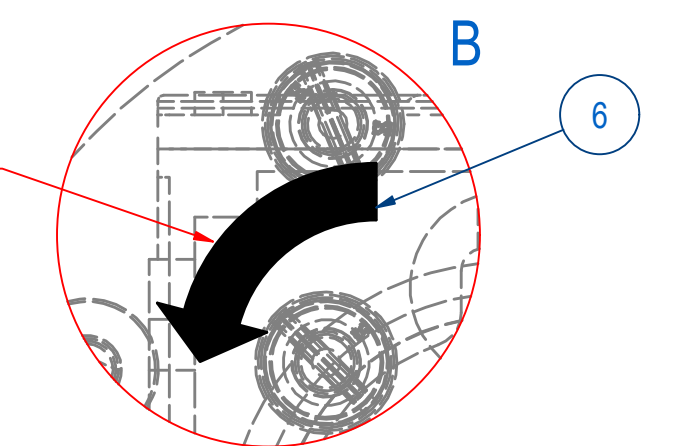
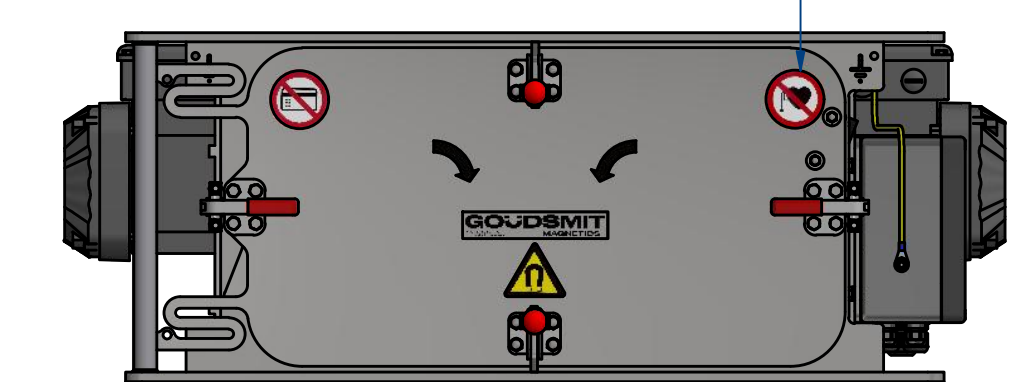
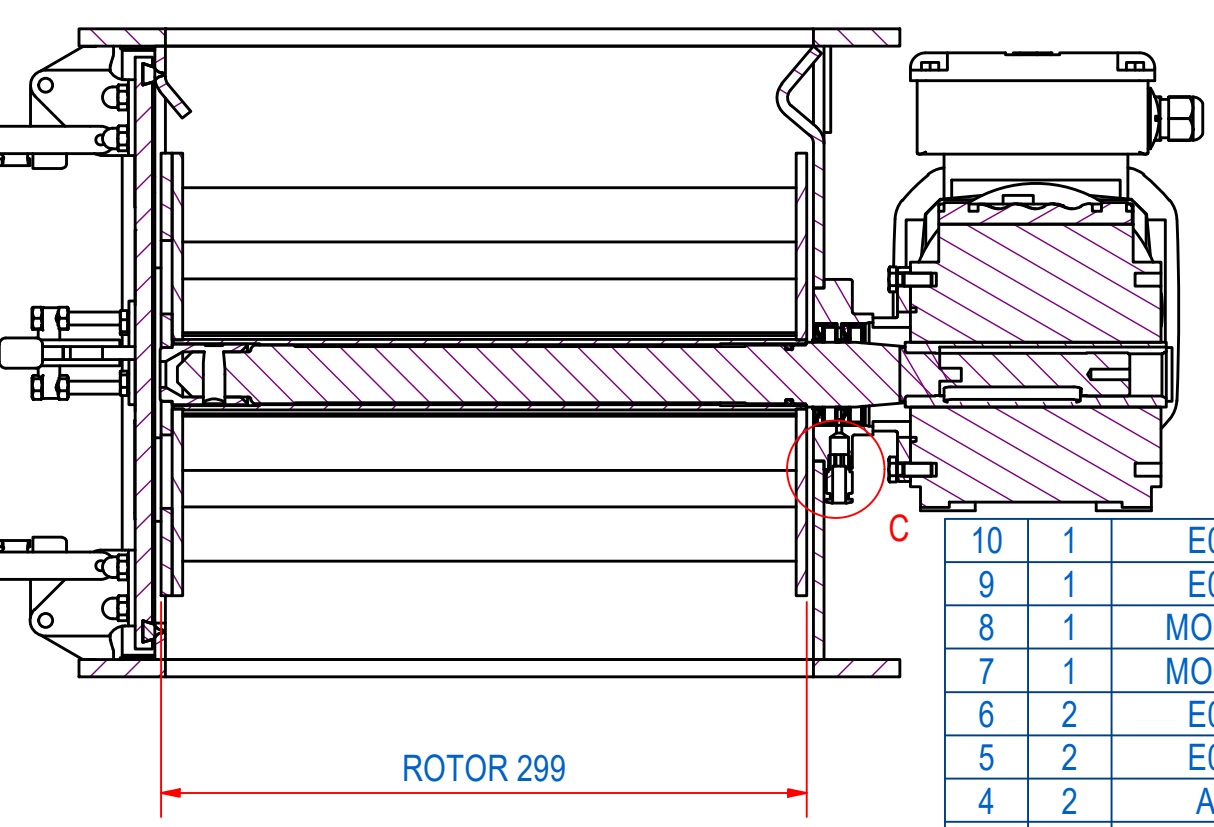
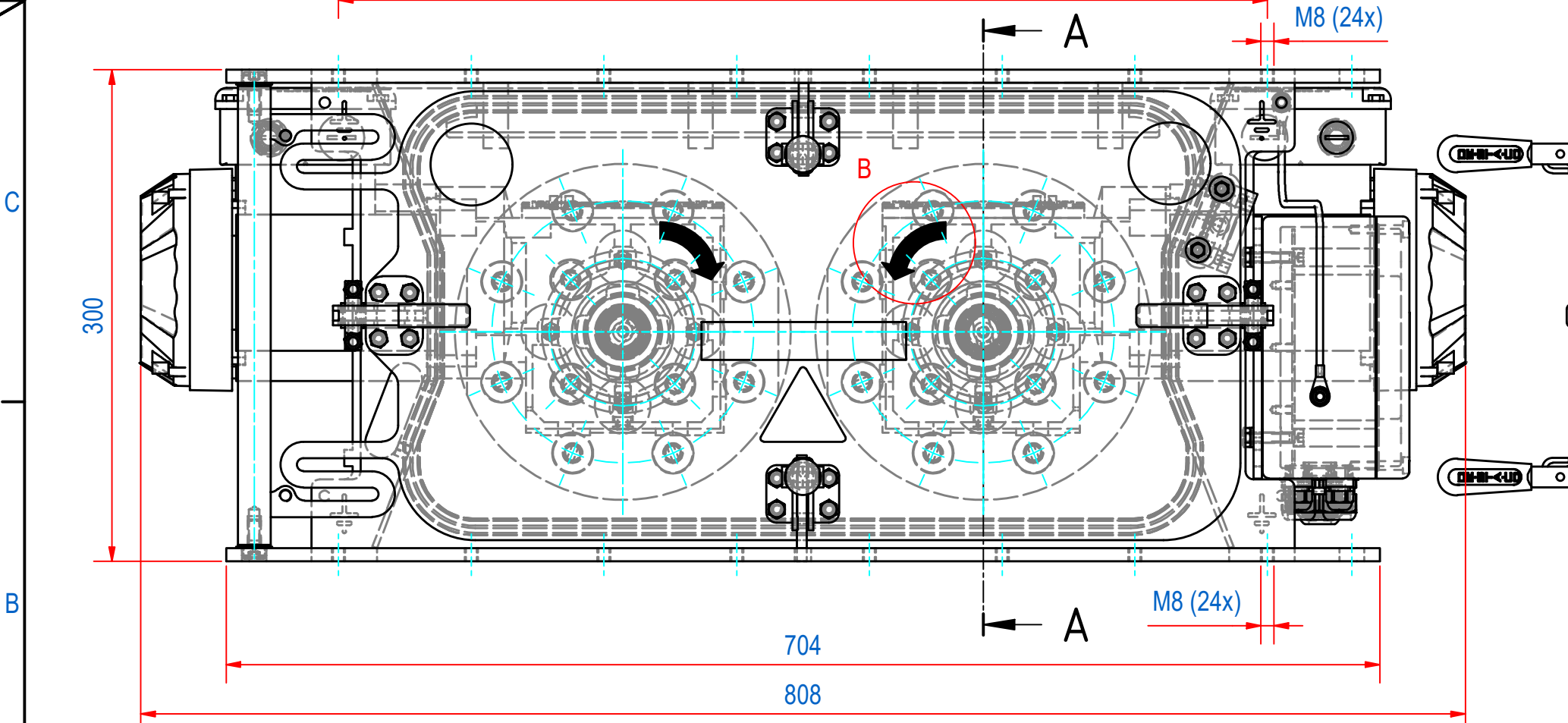
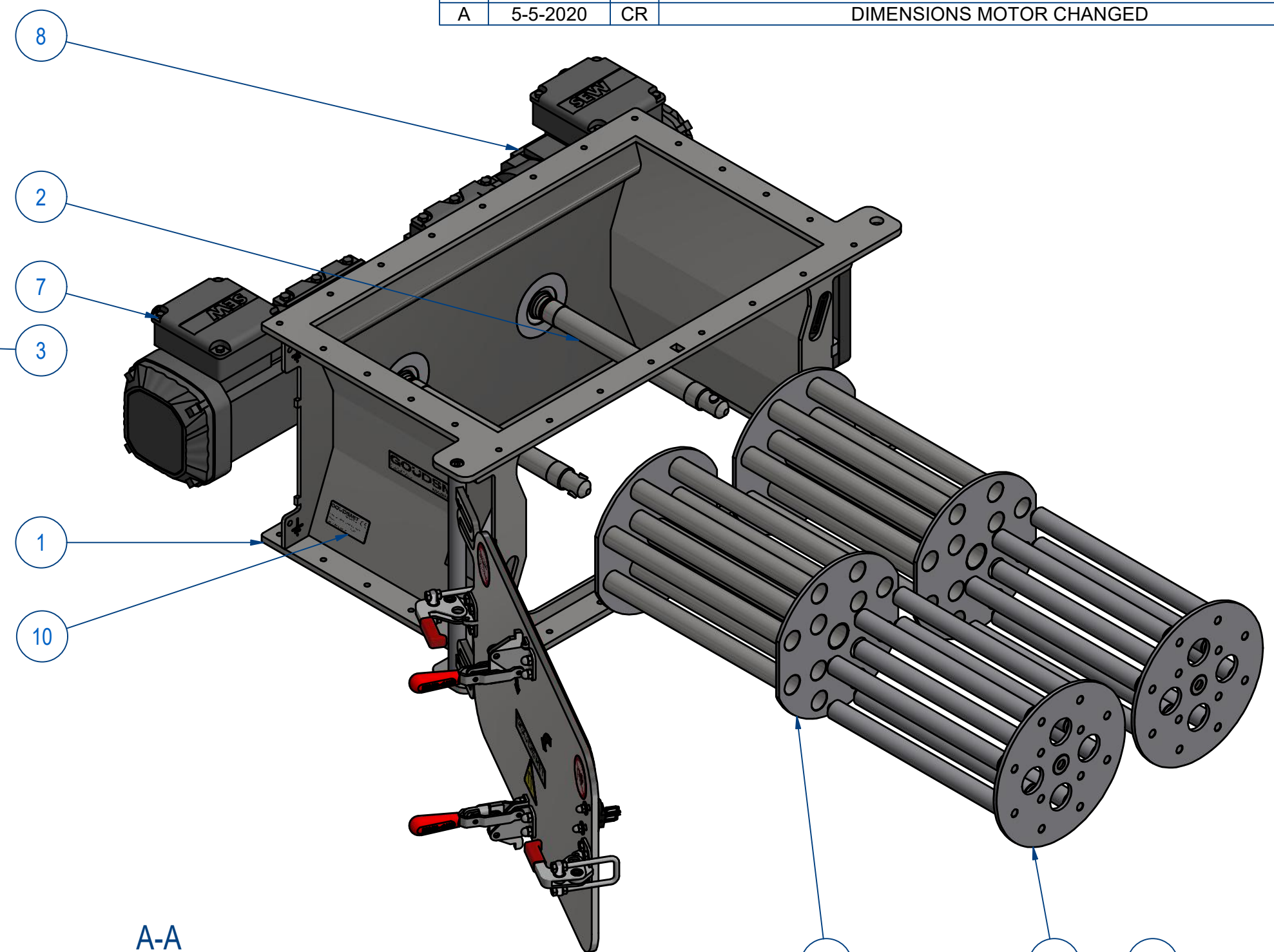
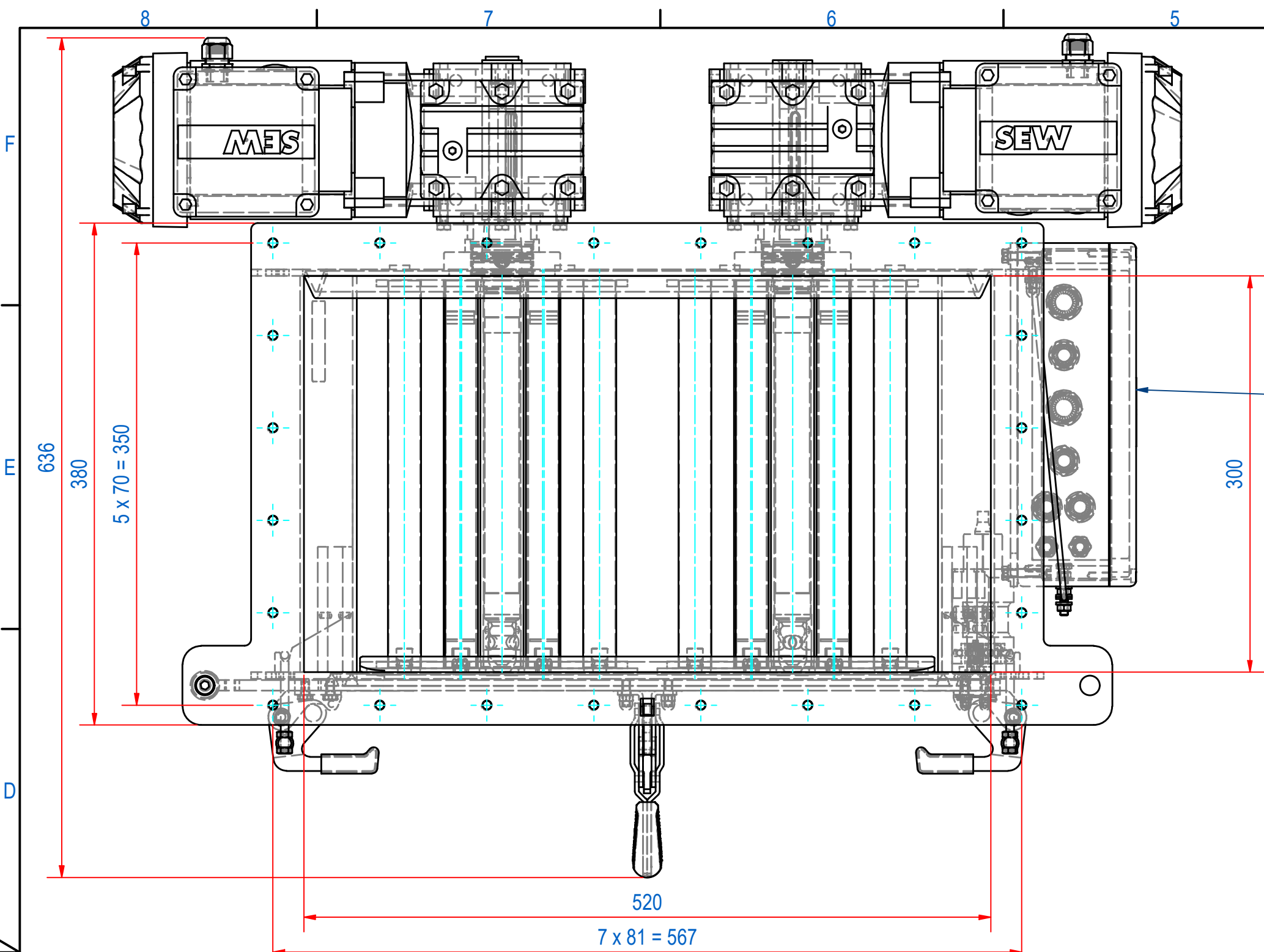


REV	DATE	BY	DESCRIPTION
-	3-4-2019	RO	REFERENCE DRAWING SCRA5230021
A	5-5-2020	CR	DIMENSIONS MOTOR CHANGED



ITEM	QTY	PART NUMBER	DESCRIPTION	Dimensions
10	1	E0090153	TYPE PLATE SECR_ NO ATEX	
9	1	E0090159	STICKERS FOR SCRA/SCRB	
8	1	MO03703511	SEW WA30 DRN71M4 35RPM	
7	1	MO03703503	WA30 DRN71M4 35RPM	
6	2	E0060897	TURNING DIRECTION CR5320	
5	2	E0047666	FRONT PLATE WITH 12B NdFeB	
4	2	A240050	EXTRACTOR 12 BARS CR3030	
3	1	A240198	TERMINAL BOX TWIN ROTOR ASSY	
2	2	A240060	SHAFT ASSY CR3030	
1	1	A240187	HOUSING + DOOR CR520x300	

RAW MAT.	Quantity	Material Number	Material Description	Length (mm)	Width (mm)
1	1				

Sheet: A2 Drawn: RO Date: 3-4-2019 Spare part: False Quick search: CR5230 Description: SECR-B-5230-24E-N-NA-F5M-B-B	Extra info: Weight (kg): 92 Source: GOUDSMIT MAGNETICS <small>© All rights reserved. Reproduction is not permitted without written permission of GOUDSMIT Magnetic Systems BV</small>	General tolerance: ISO 2768 - mK Drawn according: ISO268; ISO1101; ISO2553 Status: Standard Customer reference number: Document number: SCRB5230021 Doc.Rev: A Part number: SCRB5230021 Rev: A
--	--	--