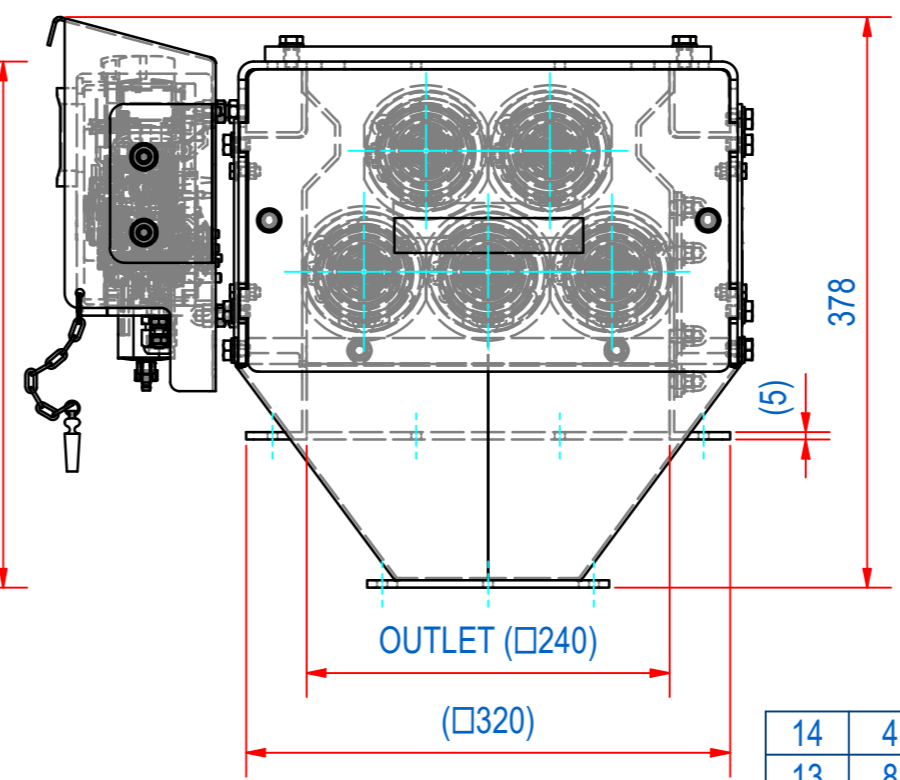
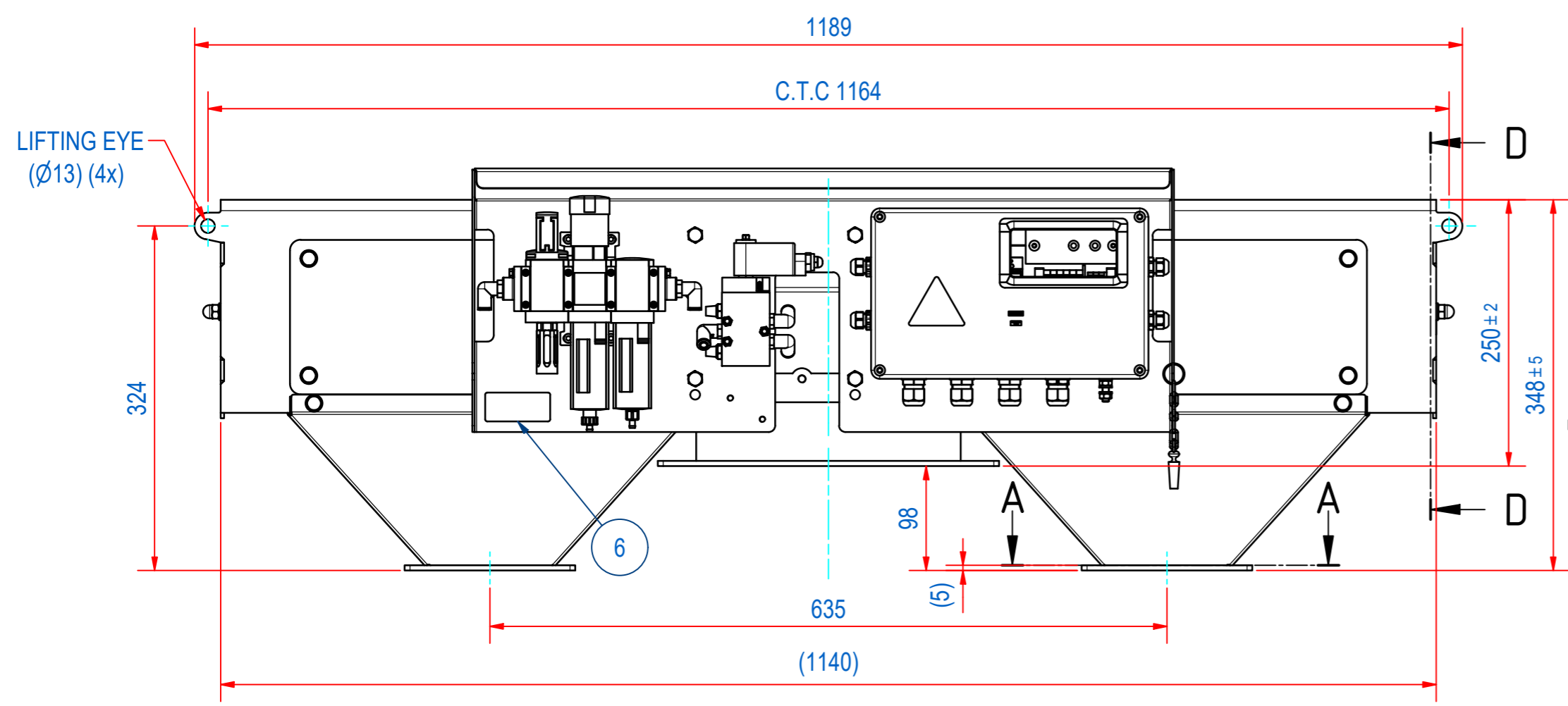
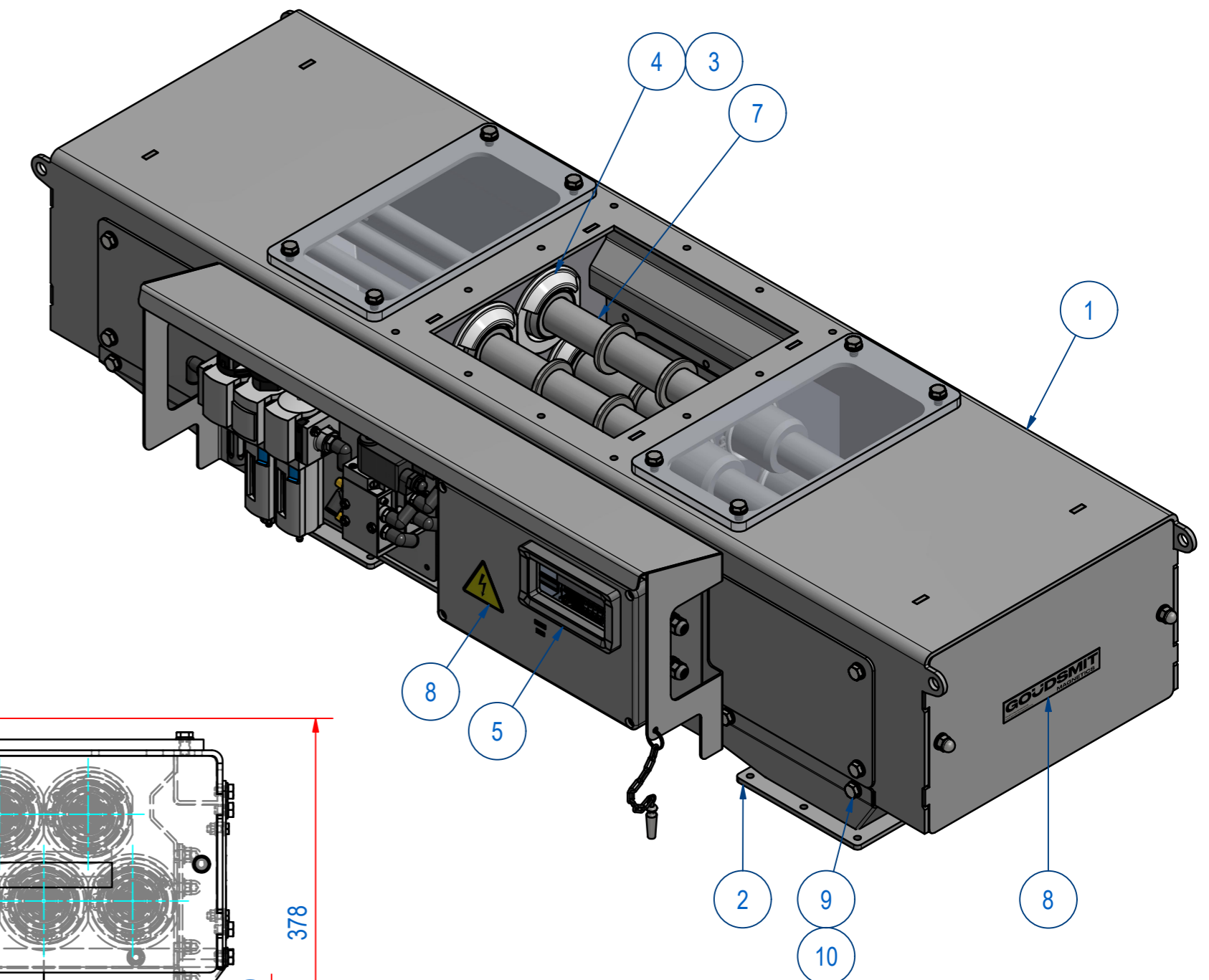
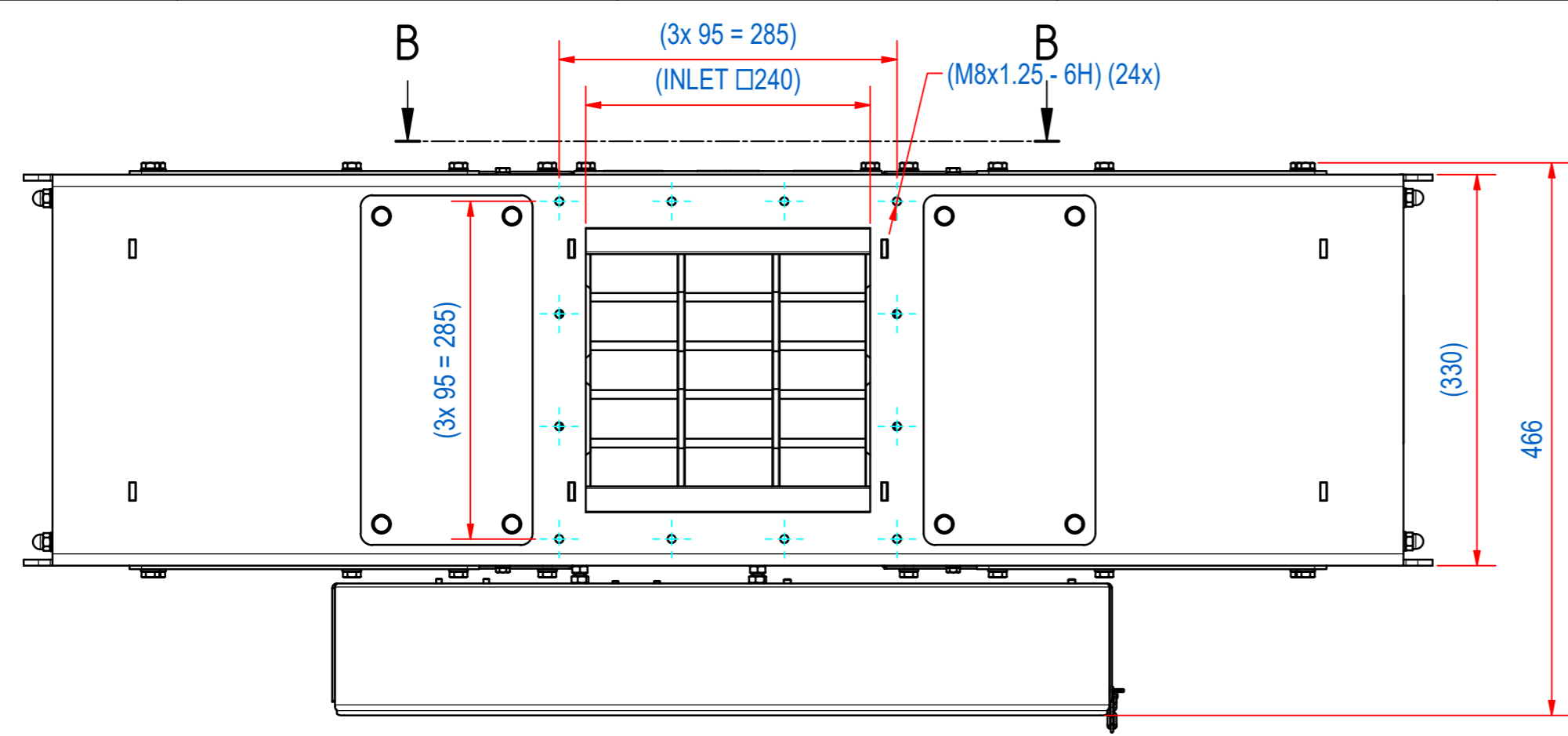
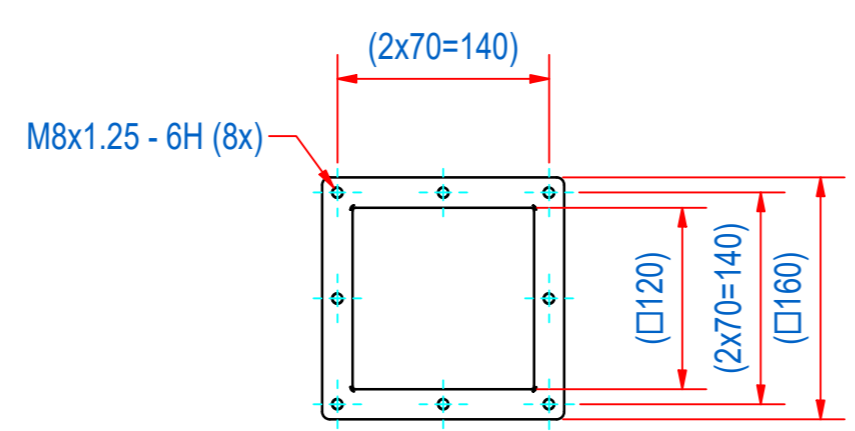
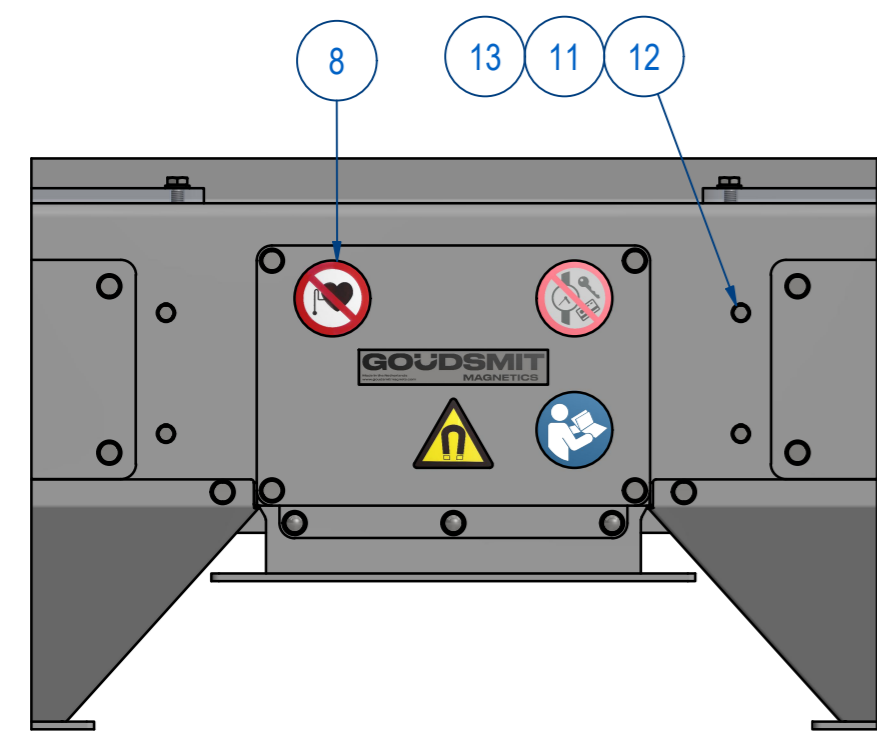


REV	DATE	BY	DESCRIPTION
B	27-2-2019	CR	WARNING STICKERS ADDED
C	18-5-2022	CR+	TYPE PLATE AND WARNING STICKERS ADDED
D	20-10-2023	CR	ALL BOLTS AND NUTS FROM A2 TO A4, MC-C CODE ADDED

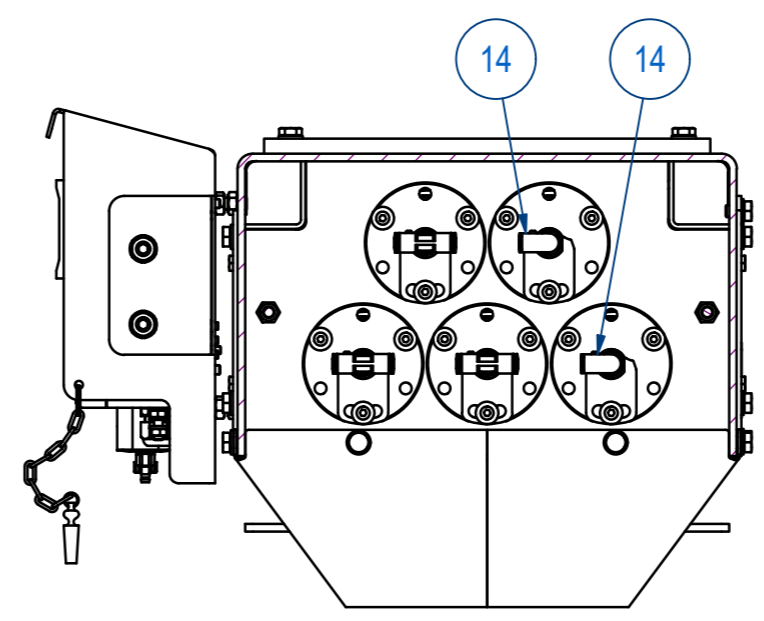


THIS DRAWING CORRESPONDS WITH
ATEX SCHEDULE DRAWING **M53674**

ITEM	QTY	PART NUMBER	DESCRIPTION	Dimensions
14	4	83.2500012	QSL-1/4-6-100	
13	8	60.0300006	NUT, HEX M6 - A4	M6
12	8	50.1306016	BOLT, HEX M6x16-A4	M6 x 16
11	16	70.0300006	WASHER M6 - A4	M6
10	16	70.0300008	WASHER M8 - A4	M8
9	16	50.1308012	BOLT, HEX M8x12-A4	M8 x 12
8	1	E0153268	SECC-STICKER/ETCH SET	
7	5	SECC240916	SECC-S-240-N-34 MAGNET ROD	
6	1	E0006894	SECC-TYPE PLATE EX 1/2D ETCH	
5	1	A140022	SECC-CONTROL UNIT EX II 2D	
4	10	A120689	SECC-S-SLIDE RING EC1935	
3	10	A120673	SECC-S-RETAINING RING D65	
2	2	A240496	SECC-R-2424-O-1212-JF-165-S6-F1m	
1	1	A240494	SECC-2424 ASSY HOUSING	



A-A (2x)
FE Disposal Flange



D-D

RAW MAT.	Quantity	Material Number	Material Description	Length (mm)	Width (mm)
1	1				

Sheet: A2	Extra info:	General tolerance: ISO 2768 - mK
Drawn: AvD	Weight (kg): 100	Drawn according: ISO286; ISO1101; ISO2553
Date: 22-7-2013		Status: Standard
Spare part: False	Source: MC-C	Customer reference number:
Quick search: CC2424		
Description: SECC-2424-05S-N-Ex-F1E-L-B-B	Document number: SECC240201	Doc.Rev: D
	Part number: SECC240201	Rev: D