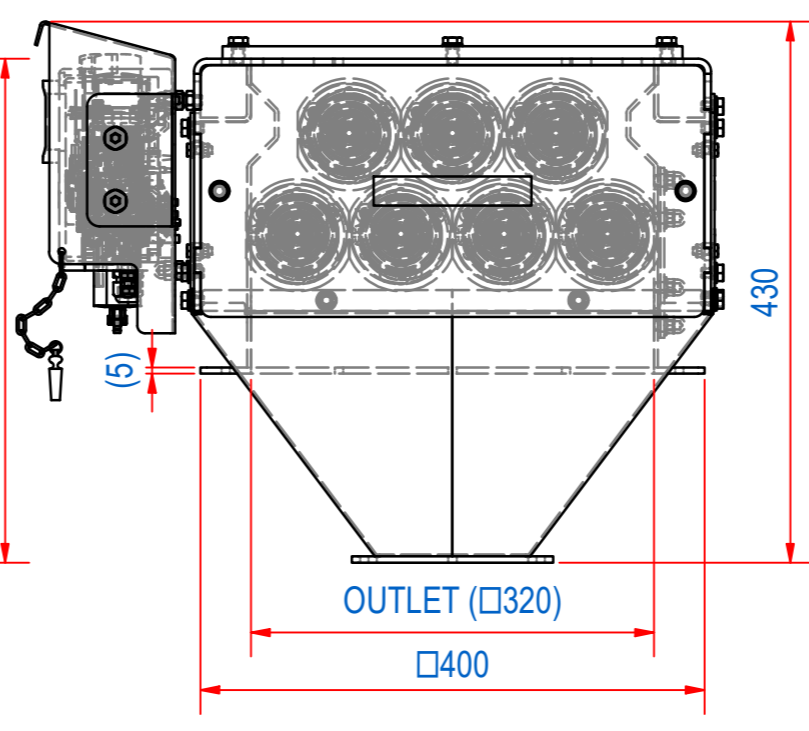
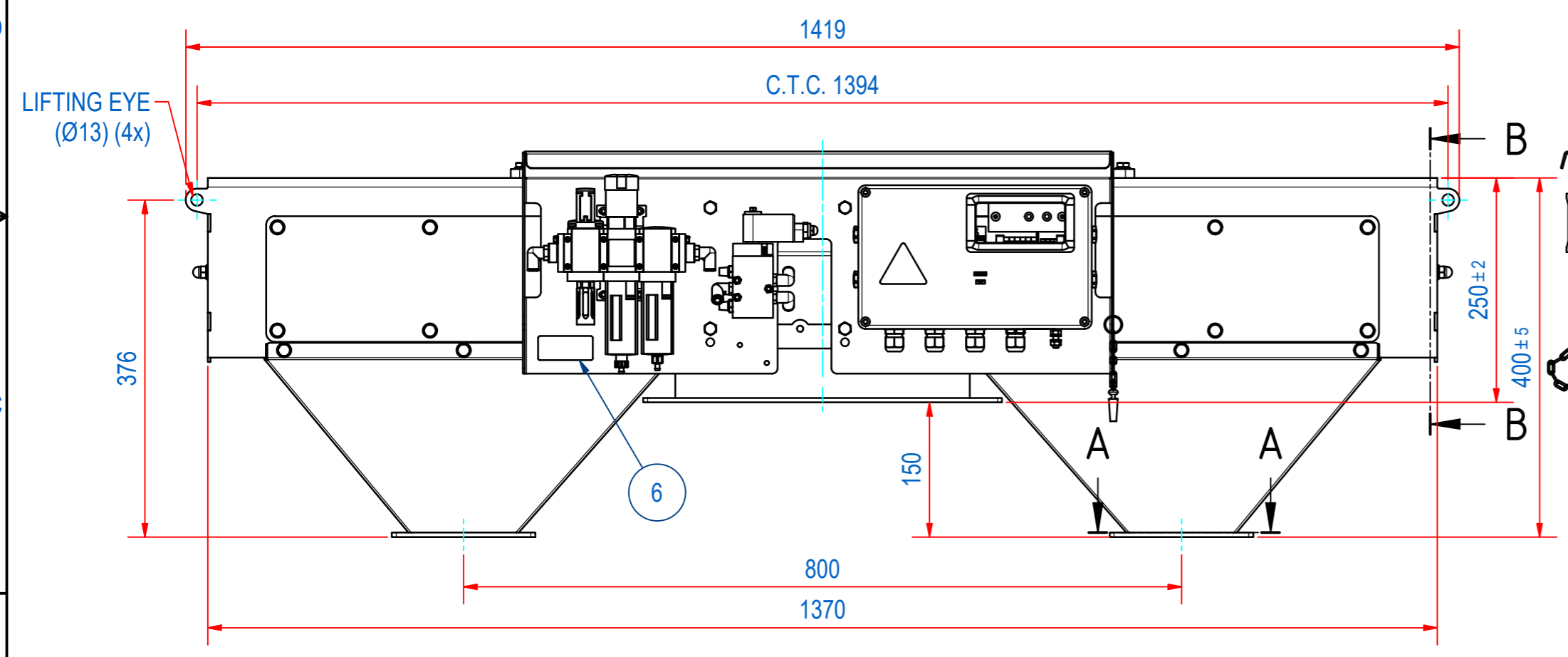
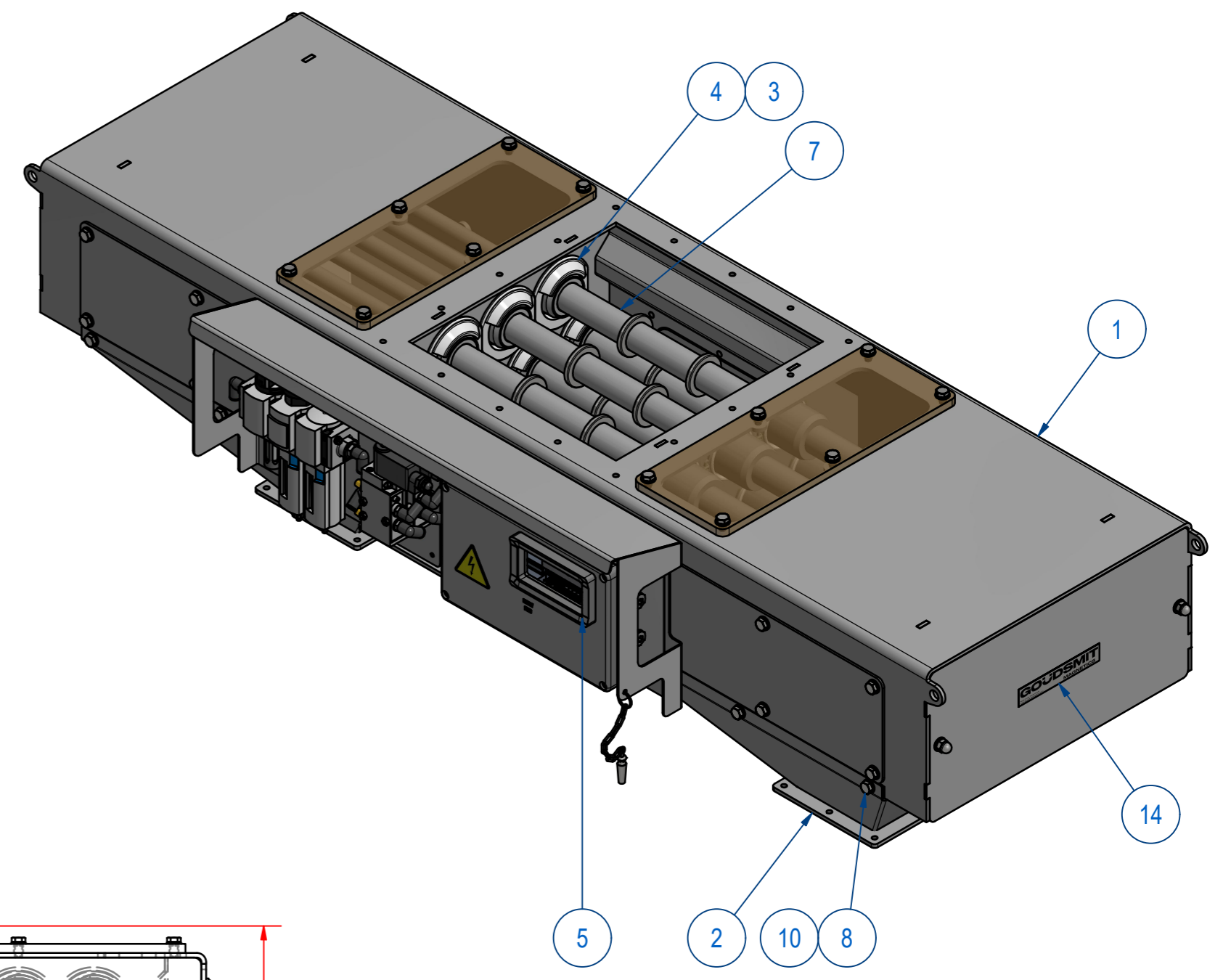
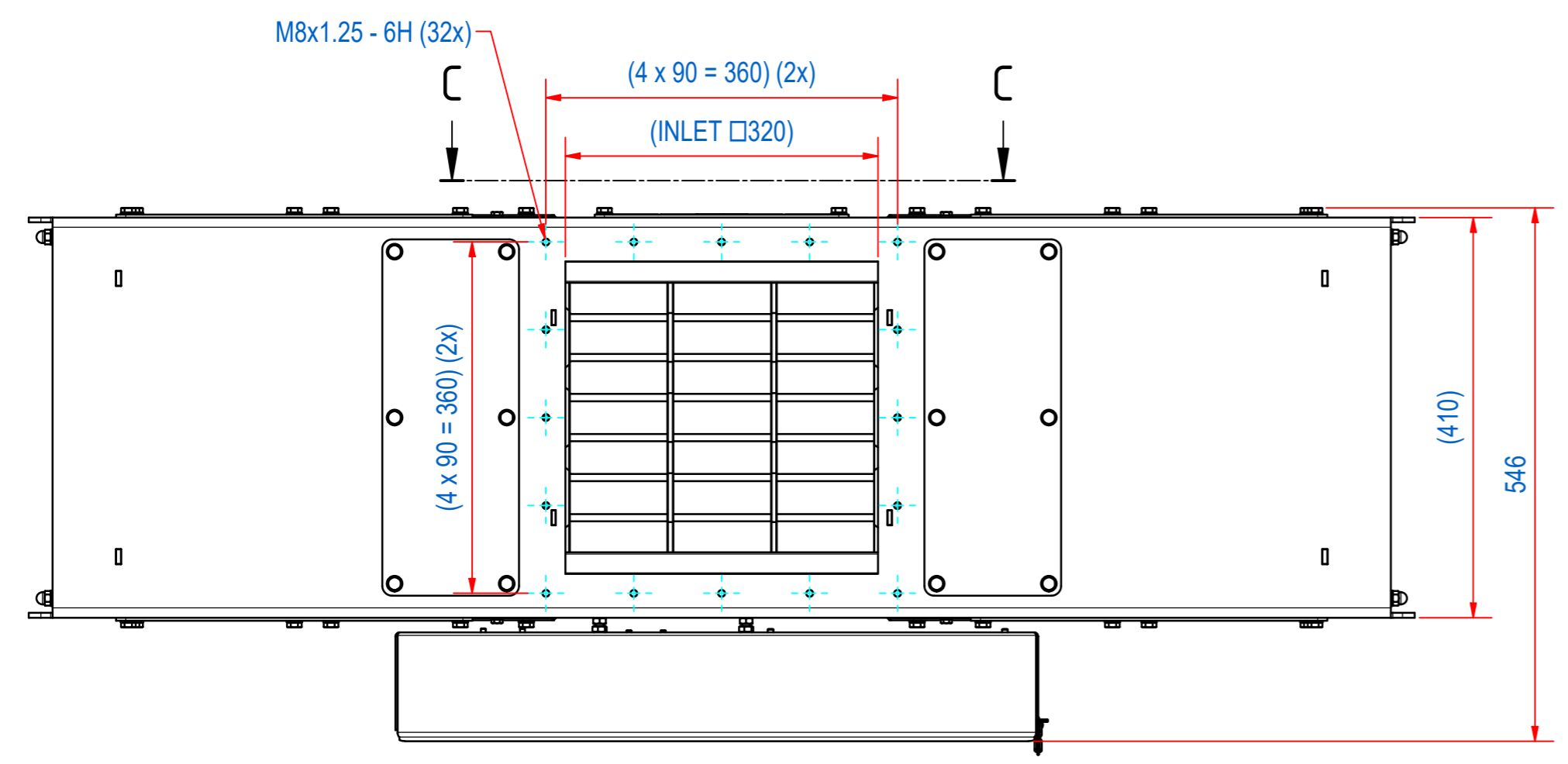


REV	DATE	BY	DESCRIPTION
-	10-1-2017	AvD	REFERENCE DRAWING SECC320101
A	20-10-2023	CR	ALL NUTS AND BOLTS FROM A2 TO A4, MC-C CODE ADDED



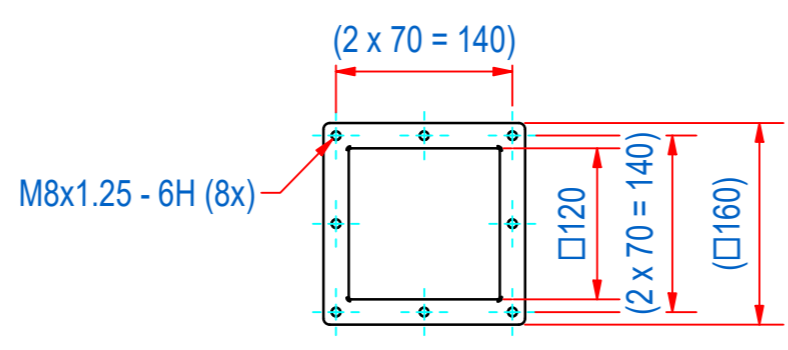
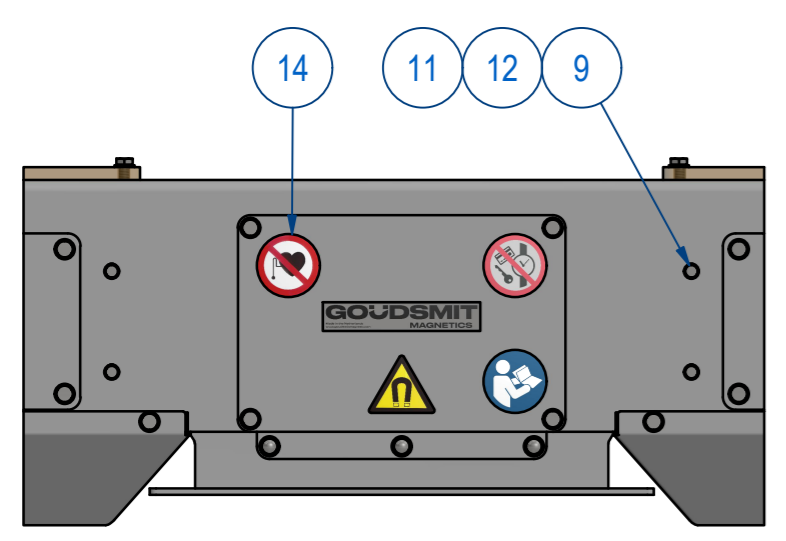
THIS DRAWING CORRESPONDS WITH  
ATEX SCHEDULE DRAWING **SECC400101**

ITEM	QTY	PART NUMBER	DESCRIPTION	Dimensions
14	1	E0153268	SECC-STICKER/ETCH SET	
13	4	83.2500012	QSL-1/4-6-100	
12	16	70.0300006	WASHER M6 - A4	M6
11	8	60.0300006	NUT, HEX M6 - A4	M6
10	16	70.0300008	WASHER M8 - A4	M8
9	8	50.1306016	BOLT, HEX M6x16-A4	M6 x 16
8	16	50.1308012	BOLT, HEX M8x12-A4	M8 x 12
7	7	SECC320916	SECC-S-3232-MAGN ROD D34 NdFeB	
6	1	E0006894	SECC-TYPE PLATE EX 1/2D ETCH	
5	1	A140022	SECC-CONTROL UNIT EX II 2D	
4	14	A120689	SECC-S-SLIDE RING EC1935	
3	14	A120673	SECC-S-RETAINING RING D65	
2	2	A240505	SECC-R-3232-O-1212-JF-216-S6-F1m	
1	1	A240503	SECC-3232 ASSY HOUSING	

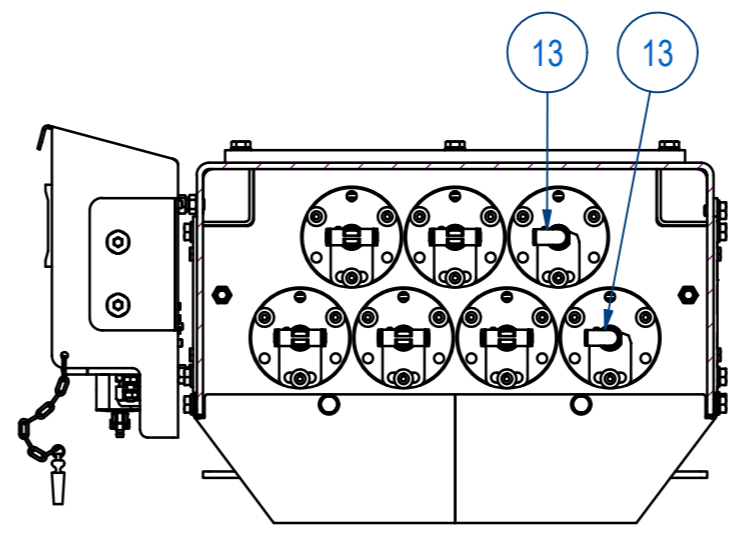
RAW MAT.	Quantity	Material Number	Material Description	Length (mm)	Width (mm)
1	1				

Sheet: <b>A2</b>	Extra info: <i>Cleanflow magnet static Auto cleaning - Continuous</i>	General tolerance: <b>ISO 2768 - mK</b>
Drawn: <b>CR</b>	Weight (kg): <b>135</b>	Drawn according: <b>ISO286; ISO1101; ISO2553</b>
Date: <b>2-5-2019</b>		Status: <b>Standard</b>
Spare part: <b>False</b>	Source:	Customer reference number:
Quick search: <b>CC3232</b>		
Description: <b>SECC-3232-07S-N-Ex-F1E-L-B-B</b>	Document number: <b>SECC320201</b>	Doc.Rev: <b>A</b>
	Part number: <b>SECC320201</b>	Rev: <b>A</b>



**A-A (2x)  
FE DISPOSAL FLANGE**



**B-B**