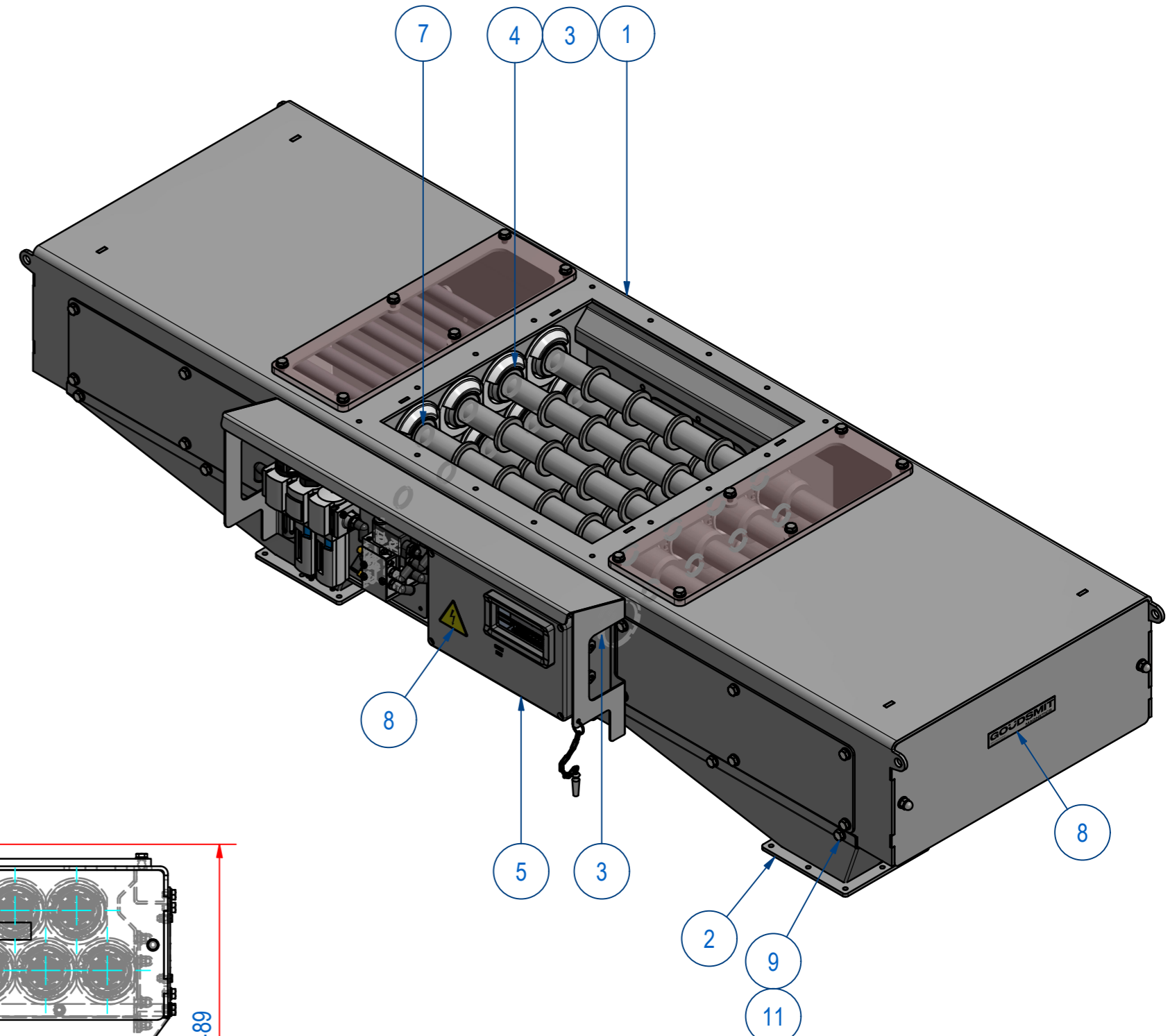
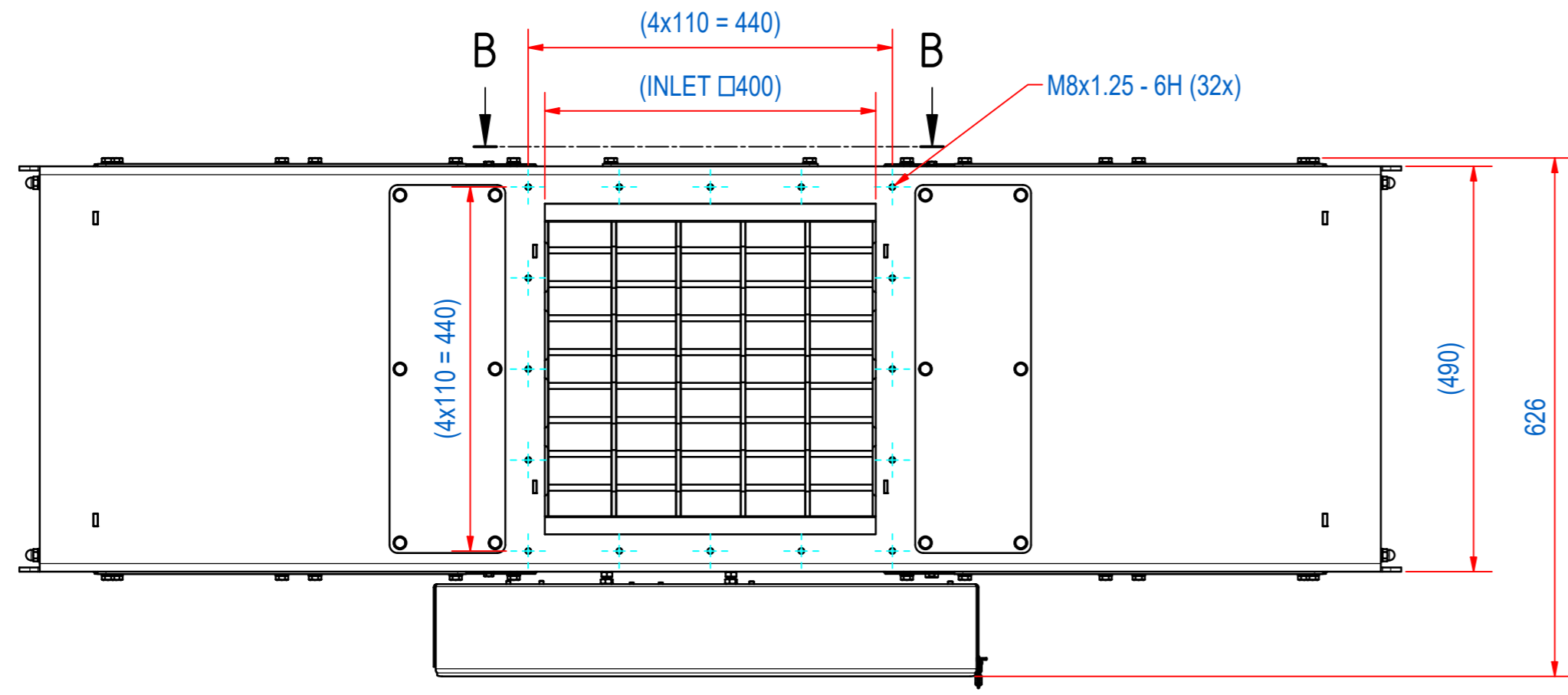
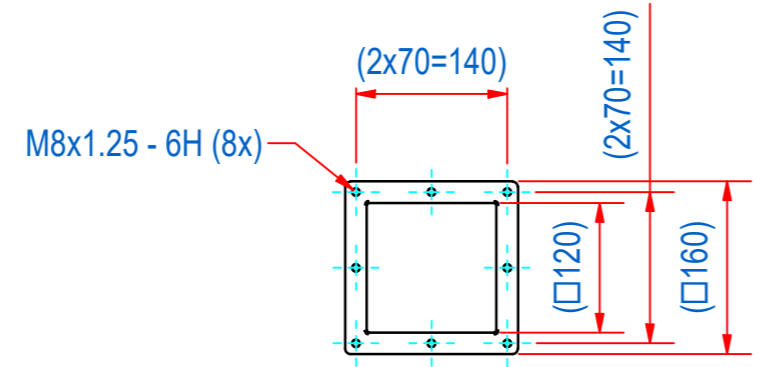
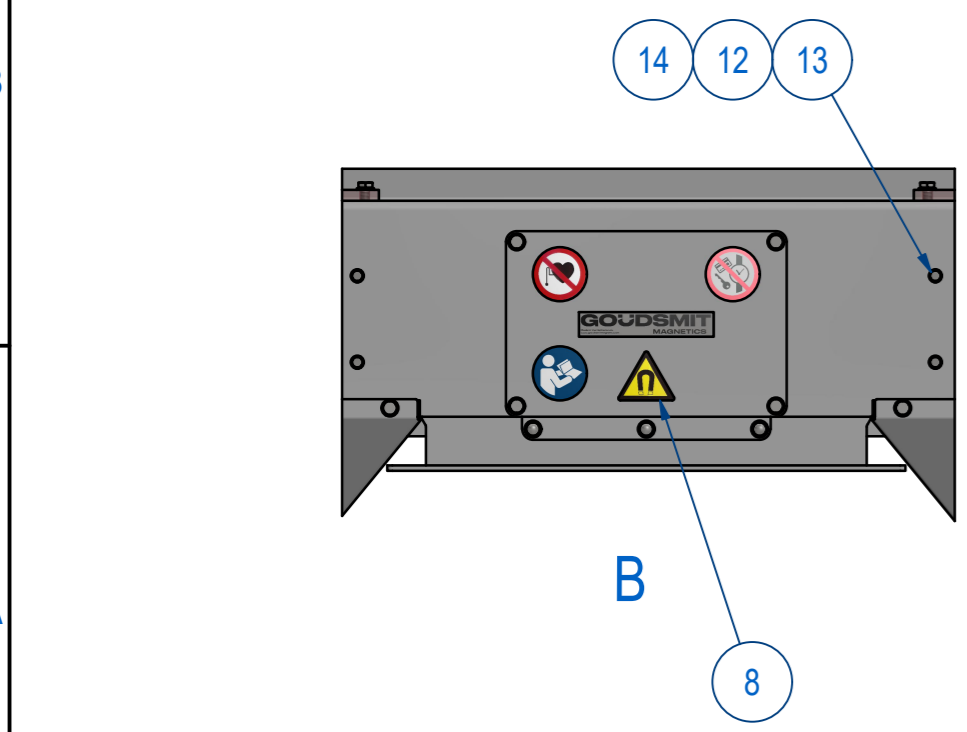
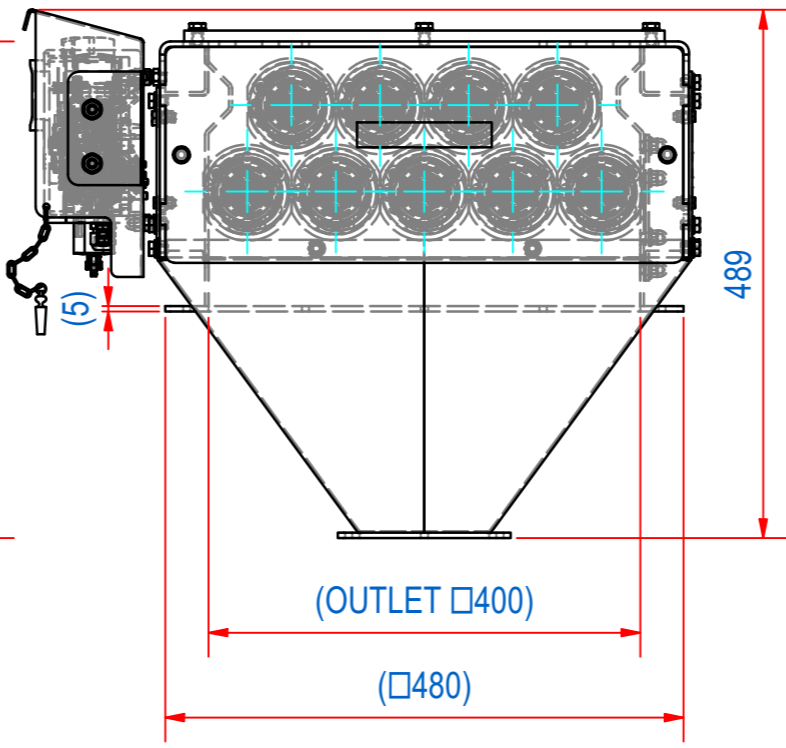
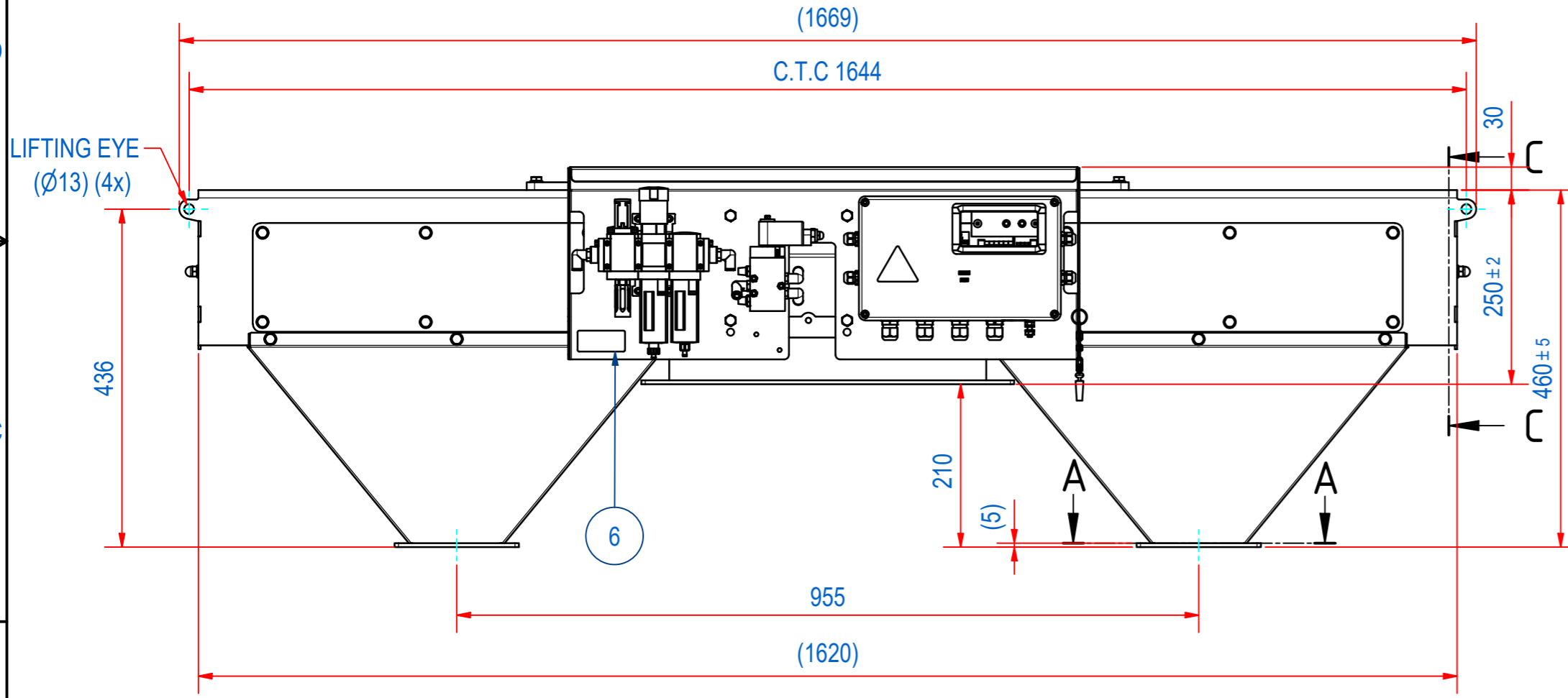


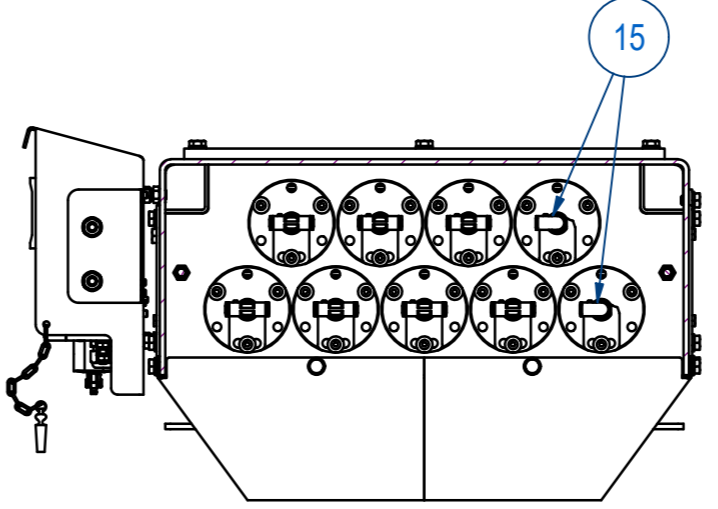
REV	DATE	BY	DESCRIPTION
A	10-1-2017	AvD	ITEM 5 (CONTROL UNIT A140022) CHANGED
B	16-6-2022	CR+	WARNING STICKERS ADDED
C	20-10-2023	CR	MC-C CODE ADDED



THIS DRAWING CORRESPONDS WITH  
ATEX SCHEDULE DRAWING **M53674**



A-A (2x)  
FE DISPOSAL FLANGE



C-C

ITEM	QTY	PART NUMBER	DESCRIPTION	Dimensions
15	4	83.2500012	QSL-1/4-6-100	
14	8	60.0300006	NUT, HEX M6 - A4	M6
13	8	50.1306016	BOLT, HEX M6x16-A4	M6 x 16
12	16	70.0300006	WASHER M6 - A4	M6
11	17	70.0300008	WASHER M8 - A4	M8
10	1	50.1308016	BOLT, HEX M8x16-A4	M8 x 16
9	16	50.1308012	BOLT, HEX M8x12-A4	M8 x 12
8	1	E0153268	SECC-STICKER/ETCH SET	
7	9	SECC400916	SECC-S-400 MAGN ROD D34 NdFeB	
6	1	E0006894	SECC-TYPE PLATE EX 1/2D ETCH	
5	1	A140022	SECC-CONTROL UNIT EX II 2D	
4	18	A120689	SECC-S-SLIDE RING EC1935	
3	18	A120673	SECC-S-RETAINING RING D65	
2	2	A240508	SECC-R-4040-O-1212-JF-276-S6-F1m	
1	1	A240506	SECC-4040 CLEANFLOW	

ITEM	QTY	PART NUMBER	DESCRIPTION	Dimensions
RAW MAT.	1			
Quantity		Material Number	Material Description	Length (mm) Width (mm)
Sheet:	A2	Extra info:	Cleanflow magnet static Auto cleaning - Continuous	General tolerance: ISO 2768 - mK
Drawn:	CR	Weight (kg):	180	Drawn according: ISO286; ISO1101; ISO2553
Date:	2-5-2019	Status:	Standard	
Spare part:	False	Source:	MC-C	Customer reference number:
Quick search:	CC4040	Document number:	SECC400201	Doc.Rev: C
Description:	SECC-4040-09S-N-Ex-F1E-L-B-B	Part number:	SECC400201	Rev: C