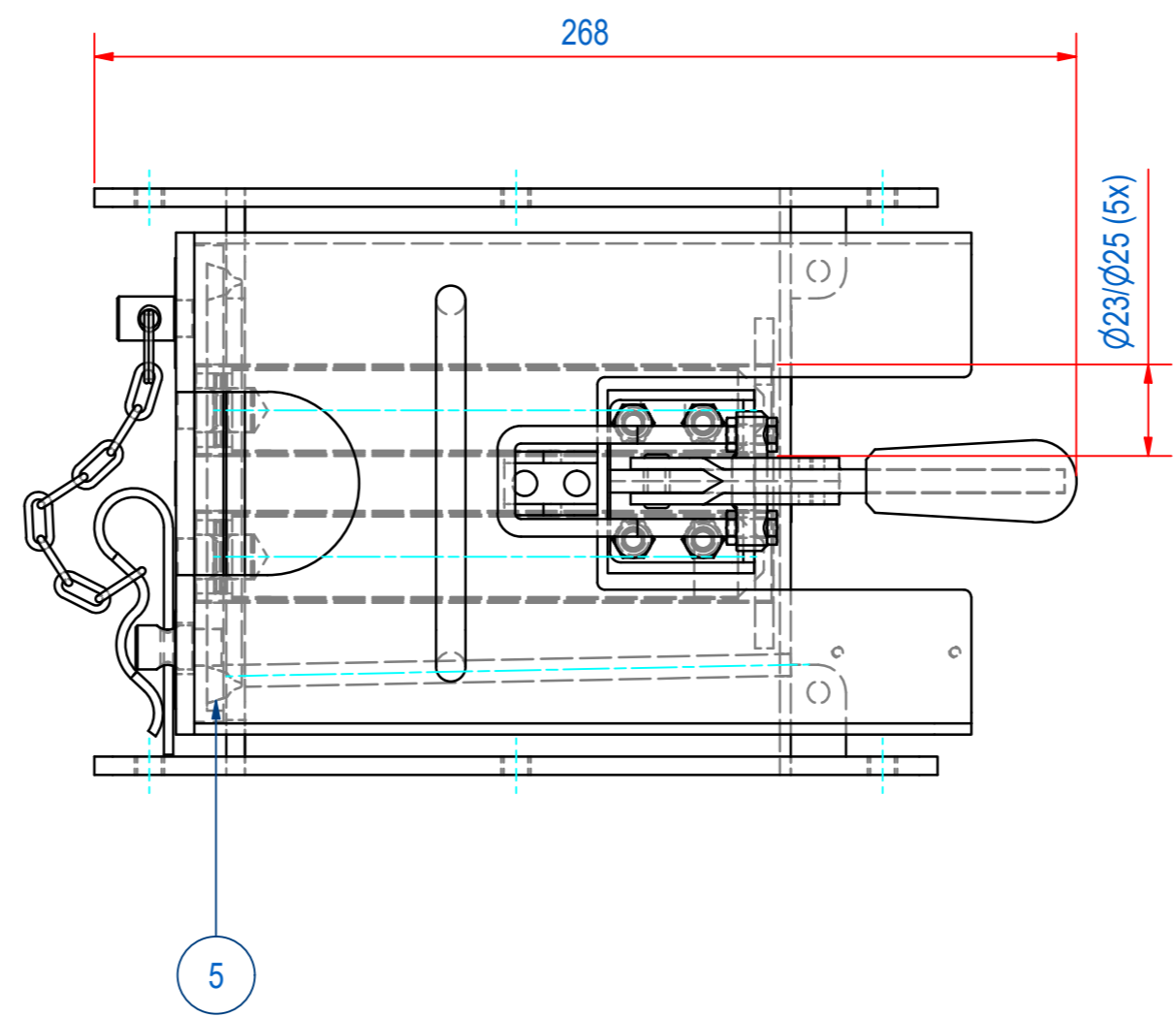
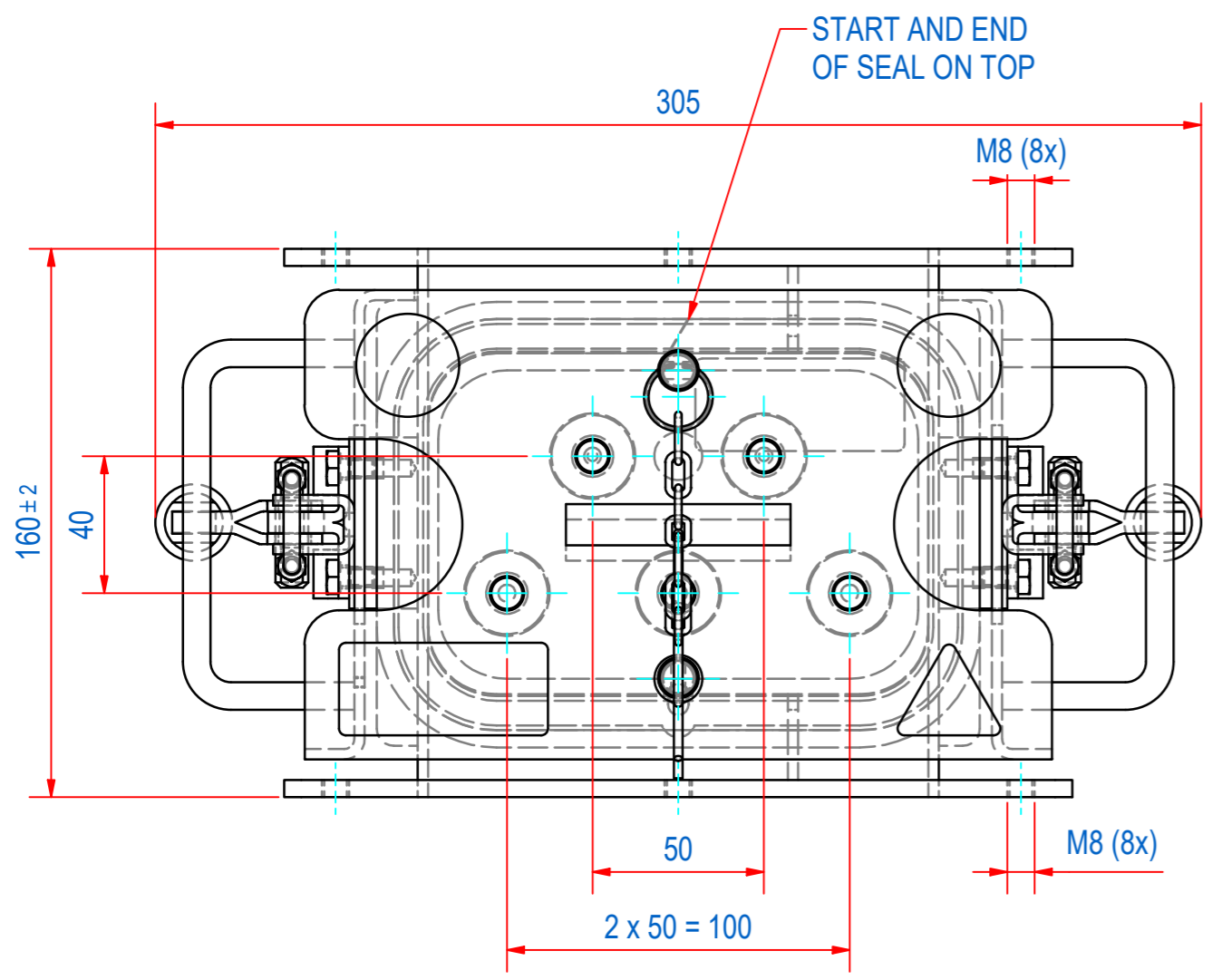
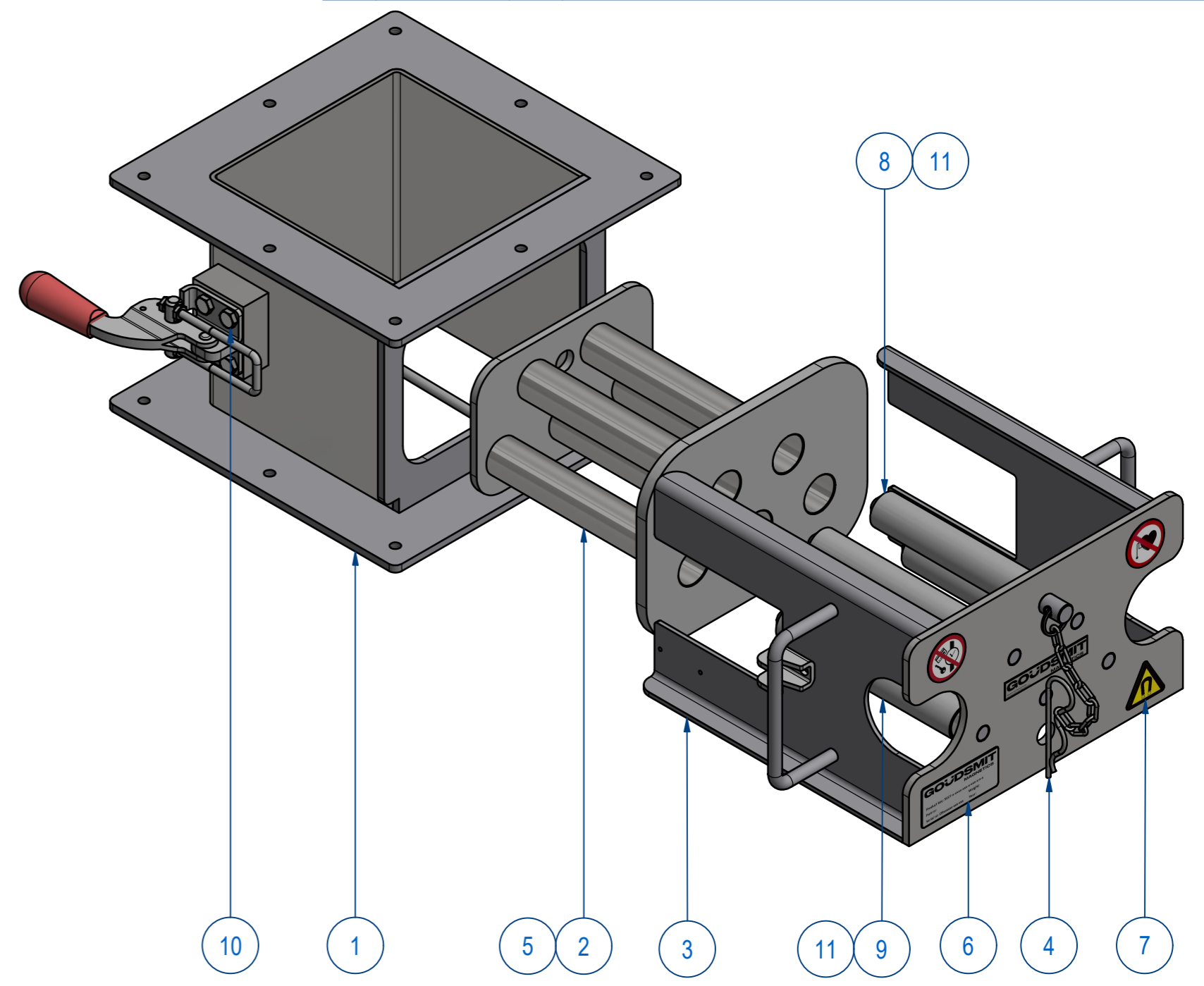
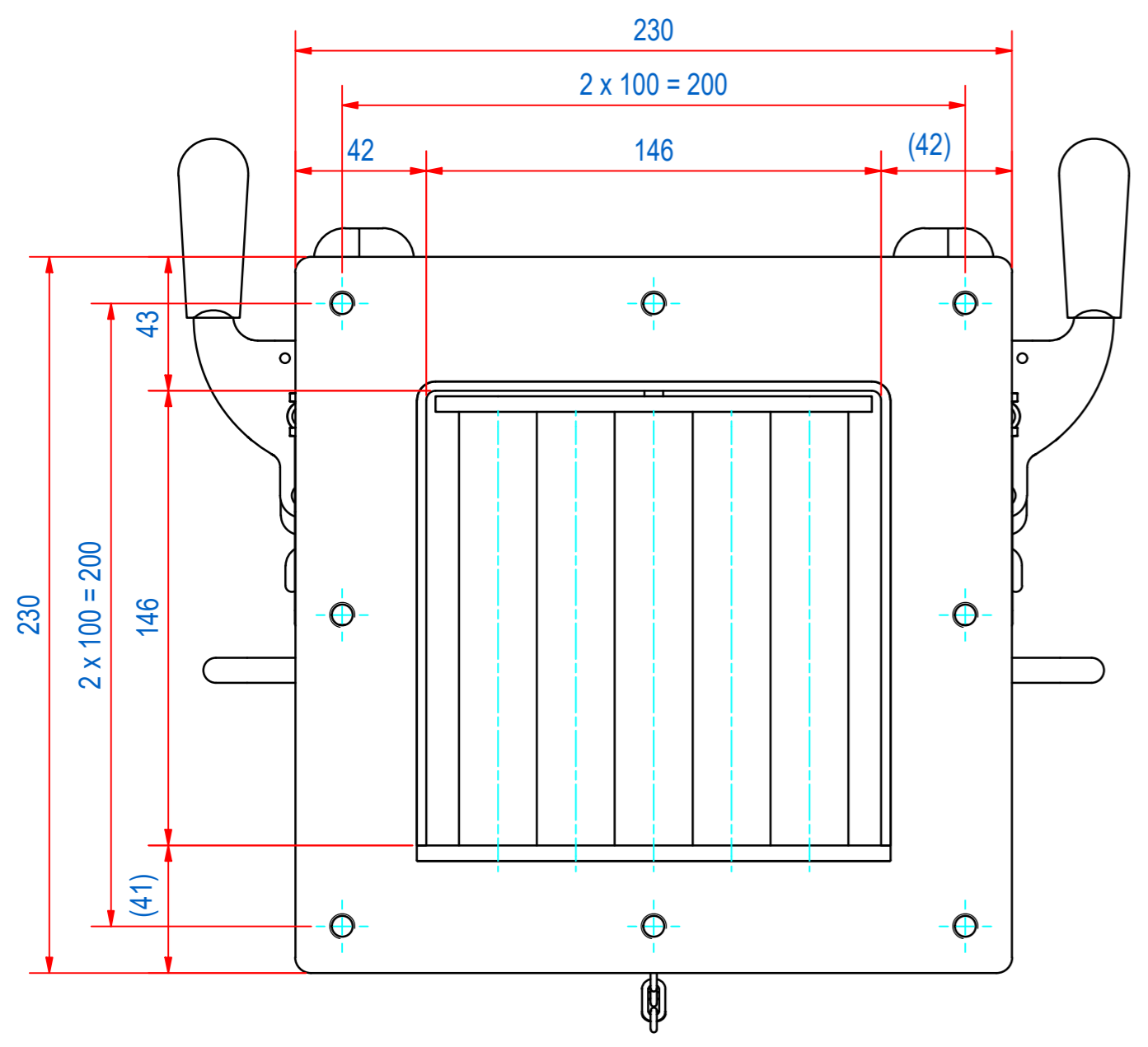


REV	DATE	BY	DESCRIPTION
-	25-11-2013	CR	NEW REVISION VAULT, NOTHING CHANGED, OLD REV WAS B
A	9-5-2018	CR	TYPE PLATE AND WARNING STICKERS ADDED FRONT CHANGED: E0074920 WAS A110096
B	30-6-2023	CR	SOURCE CODE ADDED, TOLERANCE OF HEIGHT DIMENSION TO +/- 2mm, -SR ADDED TO PRODUCT KEY (SILICON RED SEAL)



ITEM	QTY	PART NUMBER	DESCRIPTION	Dimensions
11	5	72.9900002	PIN, S SLOTTED 3 x 20 - A2	3 x 20
10	8	50.1306010	BOLT, HEX M6x10-A4	M6 x 10
9	3	SBAME100000-155	BAR-N-23-155-25-CPC-SW-B	
8	2	SBAME100009-155	BAR-N-23-155-25-CPC-SH-B	
7	1	E0103874	STICKERS FOR SECF D100/CF1515	
6	2	E0086350	TYPE PLATE SECF	
5	1	E0010348	SECF-S-1515 SEAL SILI RED EC1935	
4	1	M15489	SECF-S-LOCK WITH CHAIN "SAFE"	
3	1	E0074920	SECF-1515 FRONT INSERT	
2	1	M79824	SECF-S-1515-EXTRACTOR 5 BARS	
1	1	M80739	SECF-WELD ASSY HOUSE CF1515	

RAW MAT.	Quantity	Material Number	Material Description	Length (mm)	Width (mm)
	1				

Sheet: A2	Extra info: CLEANFLOW MAGNET MANUAL CLEANING	General tolerance: ISO 2768 - mK
Drawn: CR	Weight (kg): 12	Drawn according: ISO268; ISO1101; ISO2553
Date: 8-7-2019	Source: MC-C	Status: Standard
Spare part: False	Quick search: CF1515	Customer reference number:
Description: SECF-B-1515-05E-N-F1E-W-B-B-SR		Document number: SECF150438
		Doc.Rev: B
		Part number: SECF150438
		Rev: B