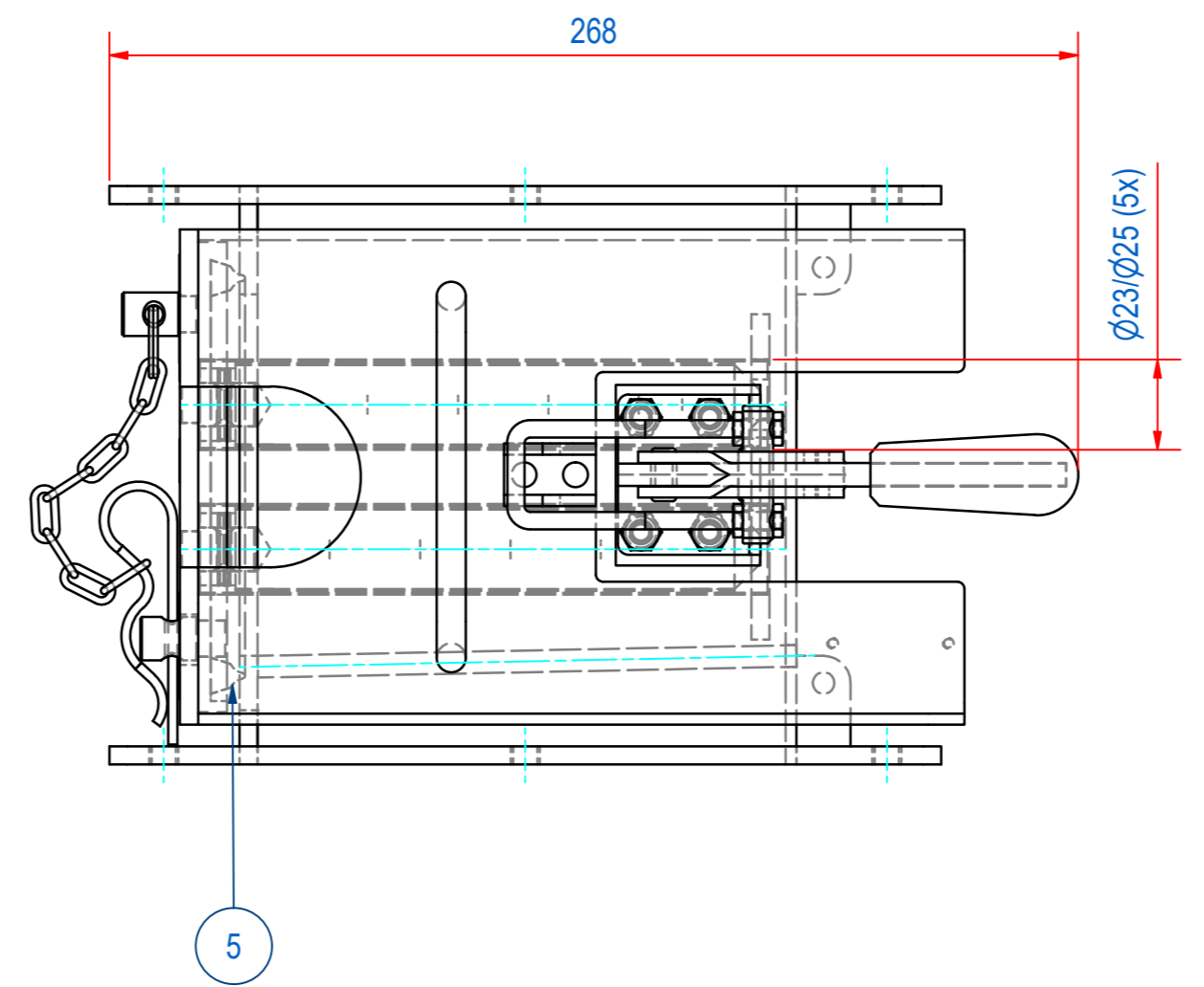
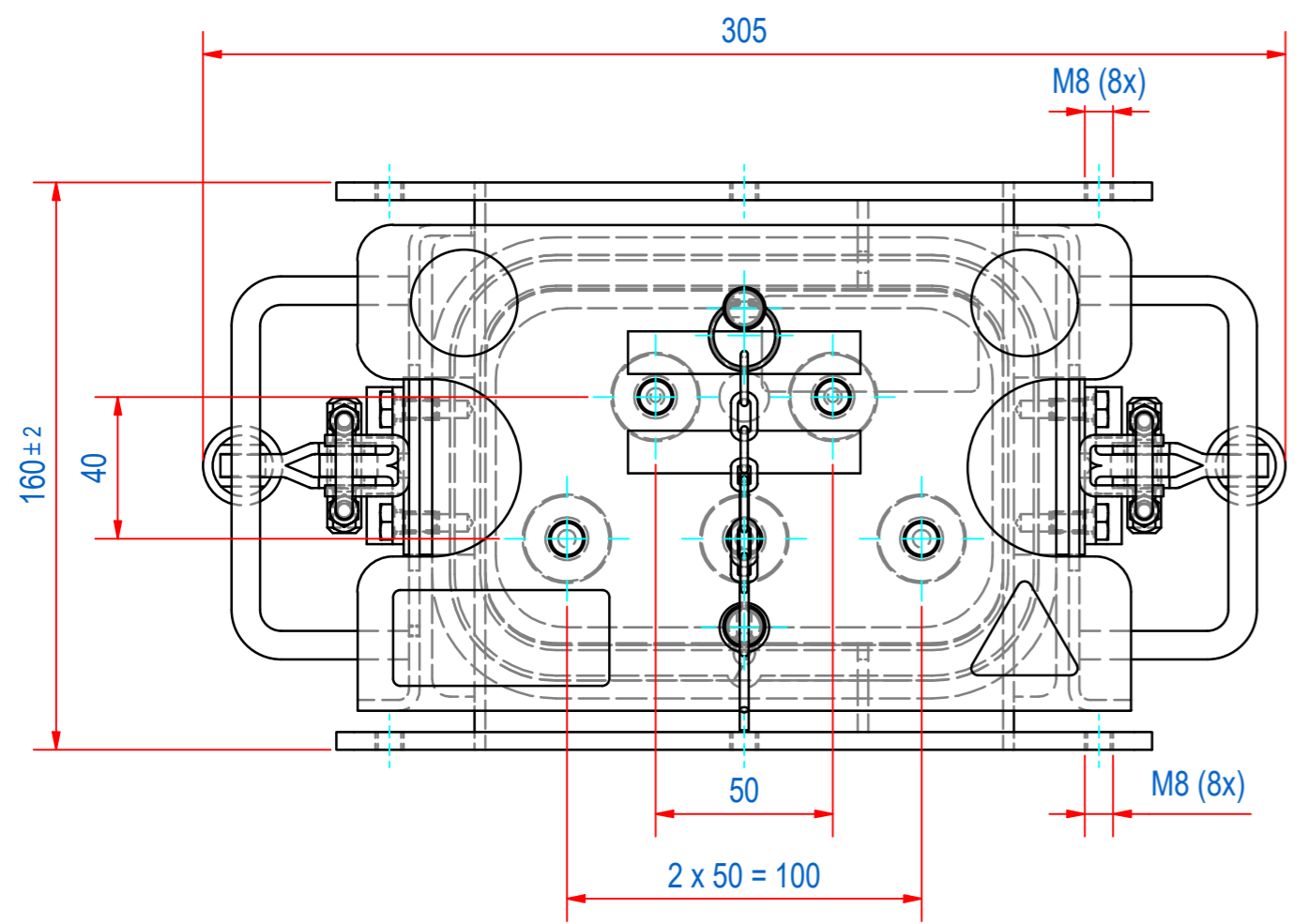
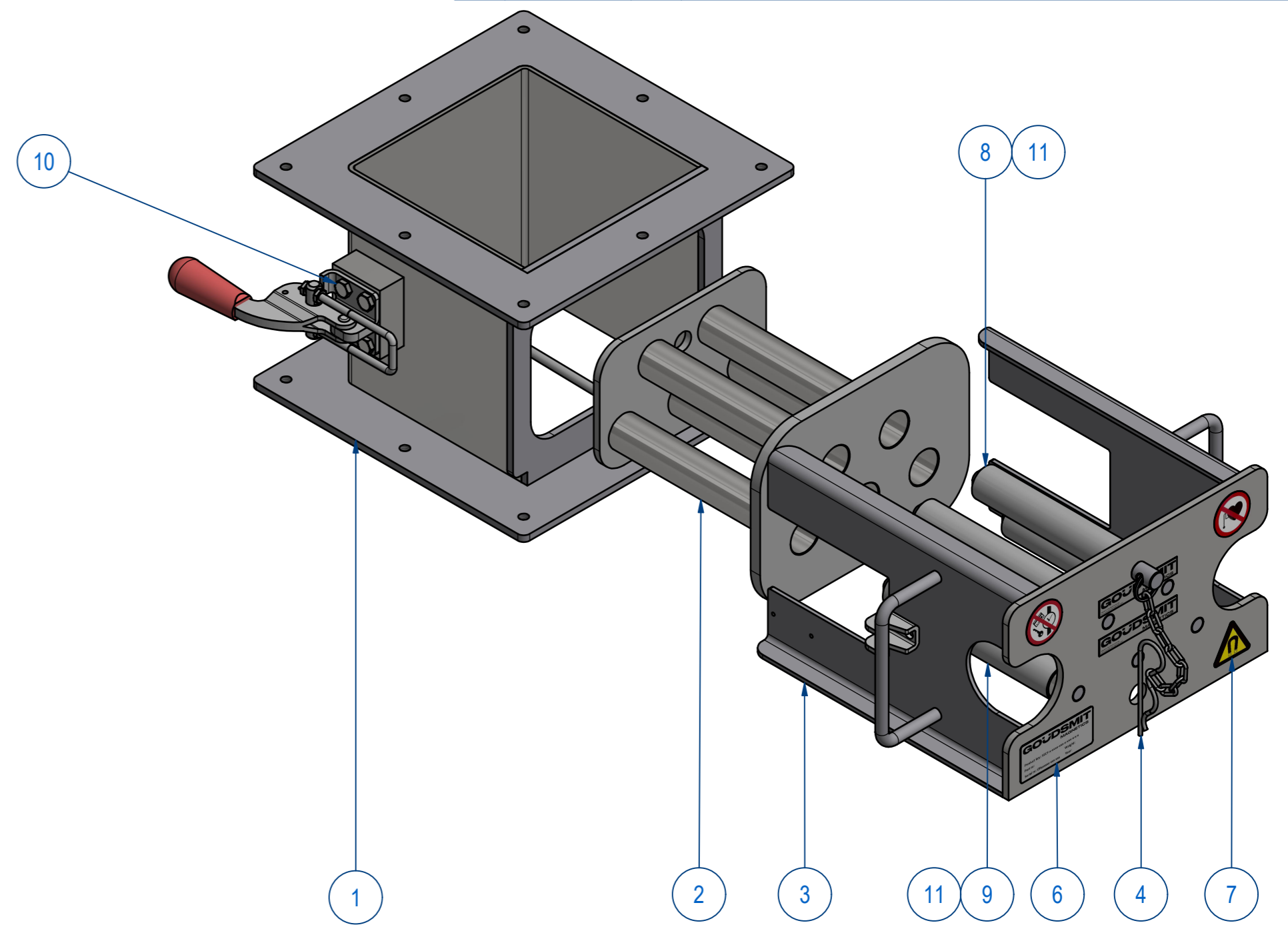
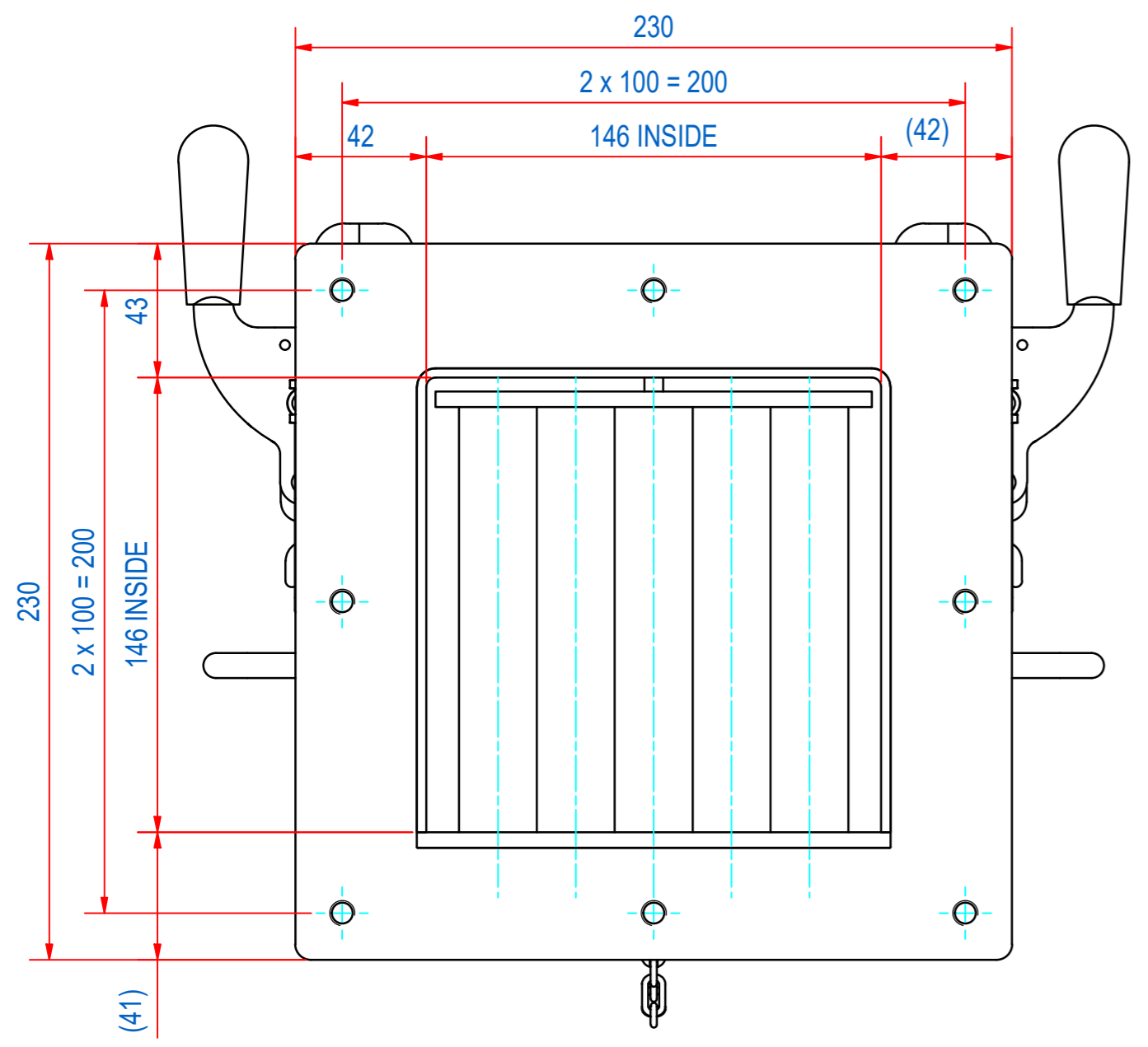


REV	DATE	BY	DESCRIPTION
A	9-5-2018	CR	TYPE PLATE AND WARNING STICKERS ADDED FRONT CHANGED: E0074920 WAS A110096
B	8-7-2019	CR	EXTRACTOR CHANGED: LASER WELDING WAS BRAZING TOLERANCE OF HEIGHT DIMENSION TO 160+/-2mm, SOURCE CODE
C	30-6-2023	CR	ADDED, -SR ADDED TO PRODUCT KEY (SILICON RED SEAL)



ITEM	QTY	PART NUMBER	DESCRIPTION	Dimensions
11	5	72.9900002	PIN, S SLOTTED 3 x 20 - A2	3 x 20
10	8	50.1306012	BOLT, HEX M6x12-A4	M6 x 12
9	3	SBAME100000-155	BAR-N-23-155-25-CPC-SW-B	
8	2	SBAME100009-155	BAR-N-23-155-25-CPC-SH-B	
7	1	E0103874	STICKERS FOR SECF D100/CF1515	
6	2	E0086350	TYPE PLATE SECF	
5	1	E0010348	SECF-S-1515 SEAL SILI RED EC1935	
4	1	M15489	SECF-S-LOCK WITH CHAIN "SAFE"	
3	1	E0074920	SECF-1515 FRONT INSERT	
2	1	M79824	SECF-S-1515-EXTRACTOR 5 BARS	
1	1	M80739	SECF-WELD ASSY HOUSE CF1515	

RAW MAT.	Quantity	Material Number	Material Description	Length (mm)	Width (mm)
1	1				

Sheet: A2	Extra info:	General tolerance: ISO 2768 - mK
Drawn: CR	Weight (kg): 12	Drawn according: ISO268; ISO1101; ISO2553
Date: 8-7-2019		Status: Standard
Spare part: False	Source: MC-C	Customer reference number:
Quick search: CF150NB		
Description: SECF-B-1515-05E-N-F5m-W-B-SR	Document number: SECF150538	Doc.Rev: C
	Part number: SECF150538	Rev: C