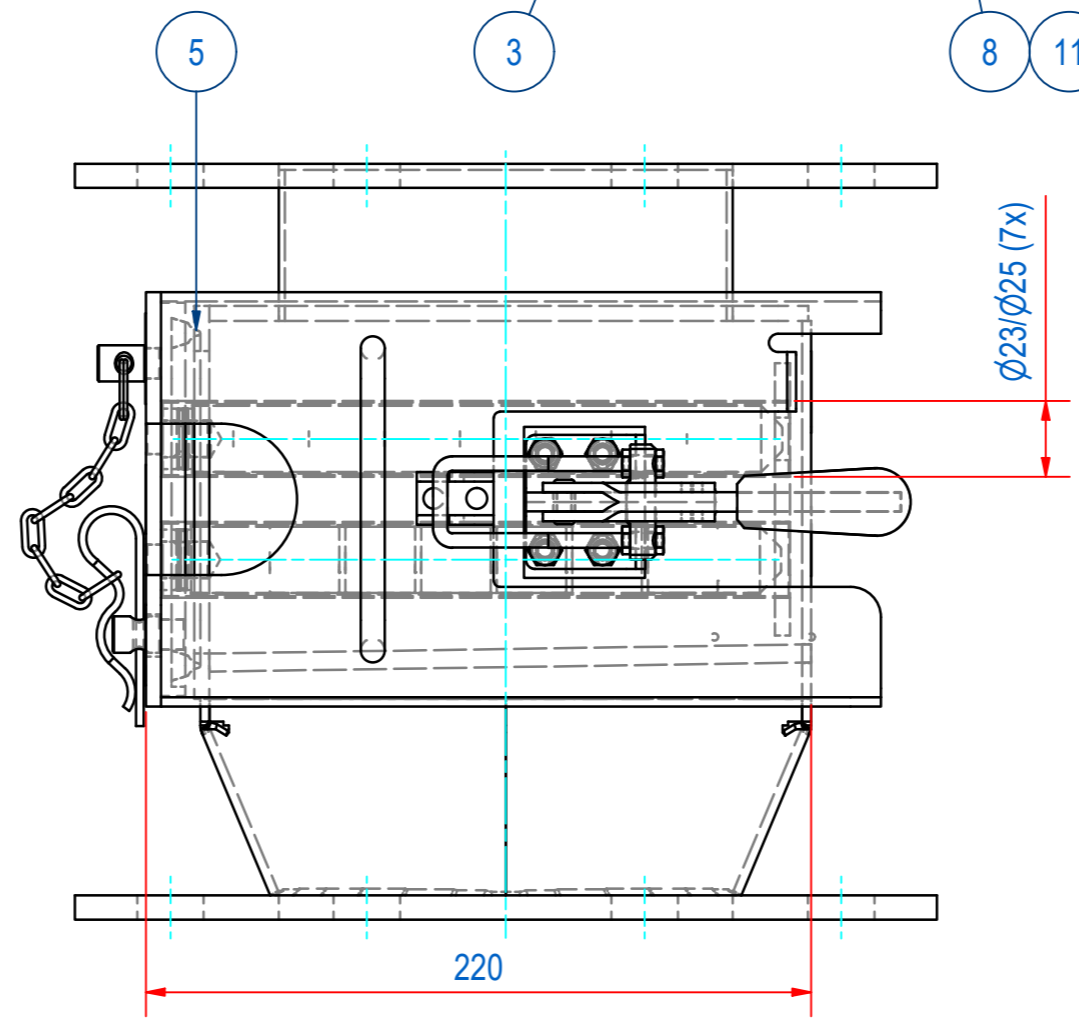
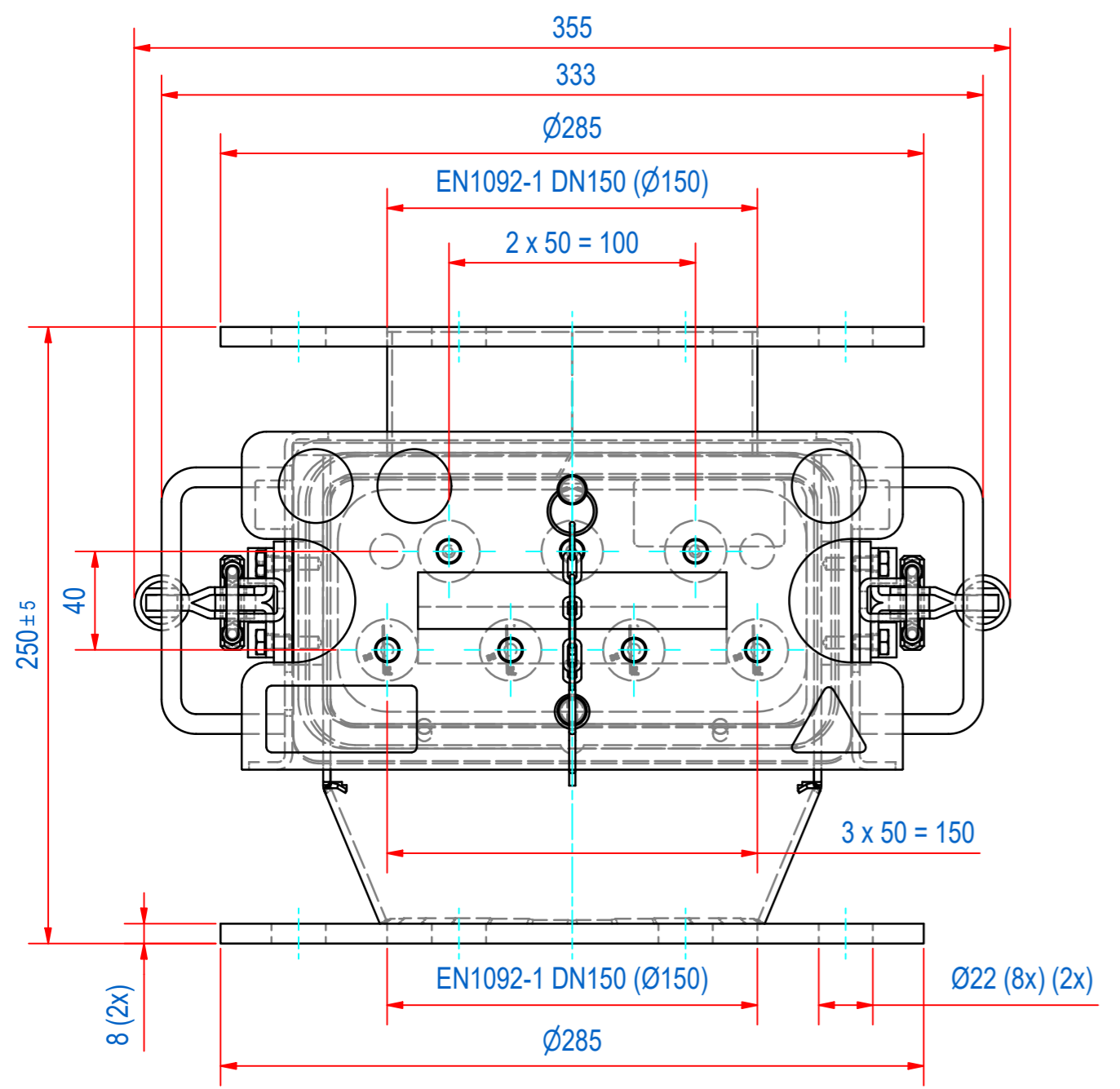
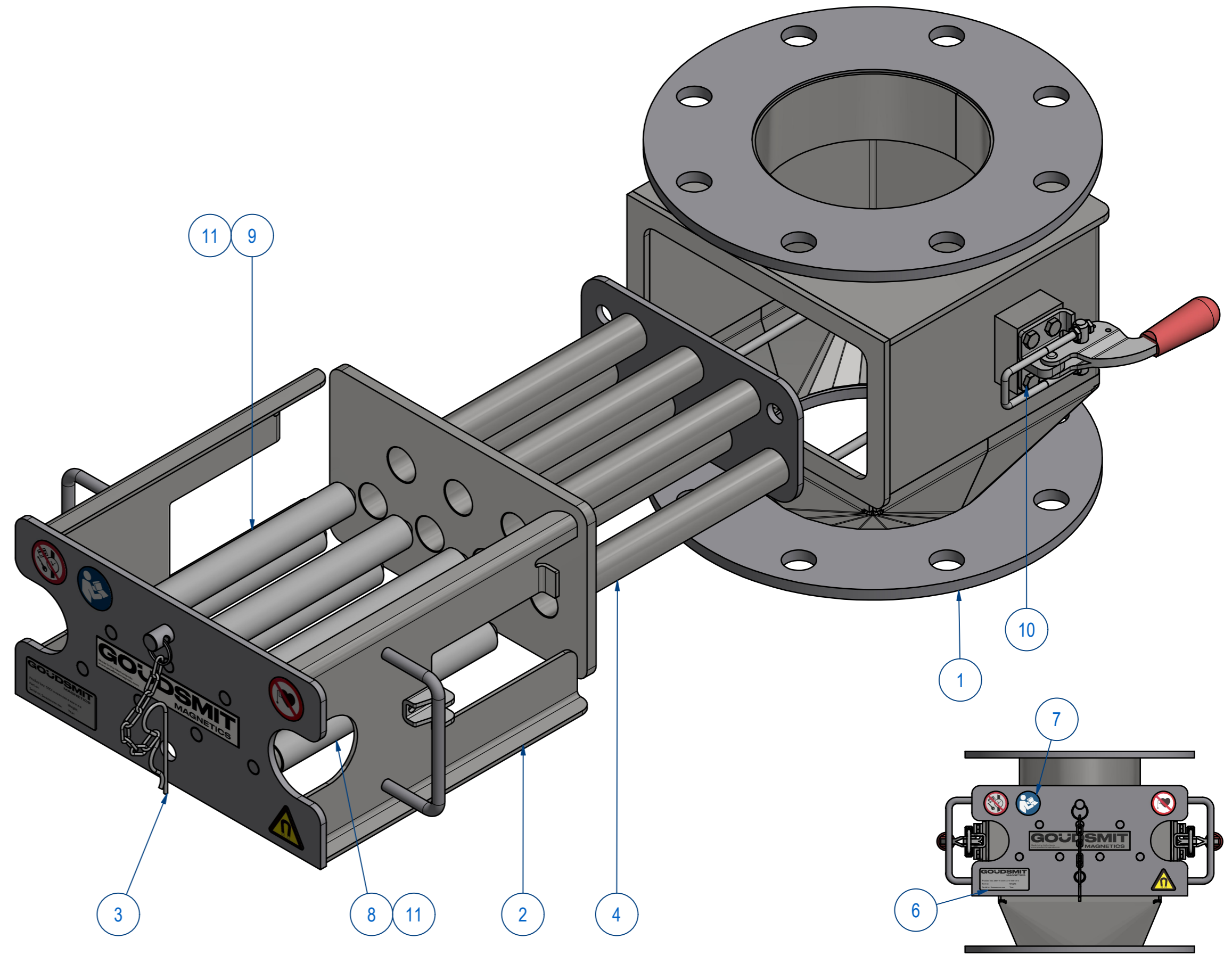
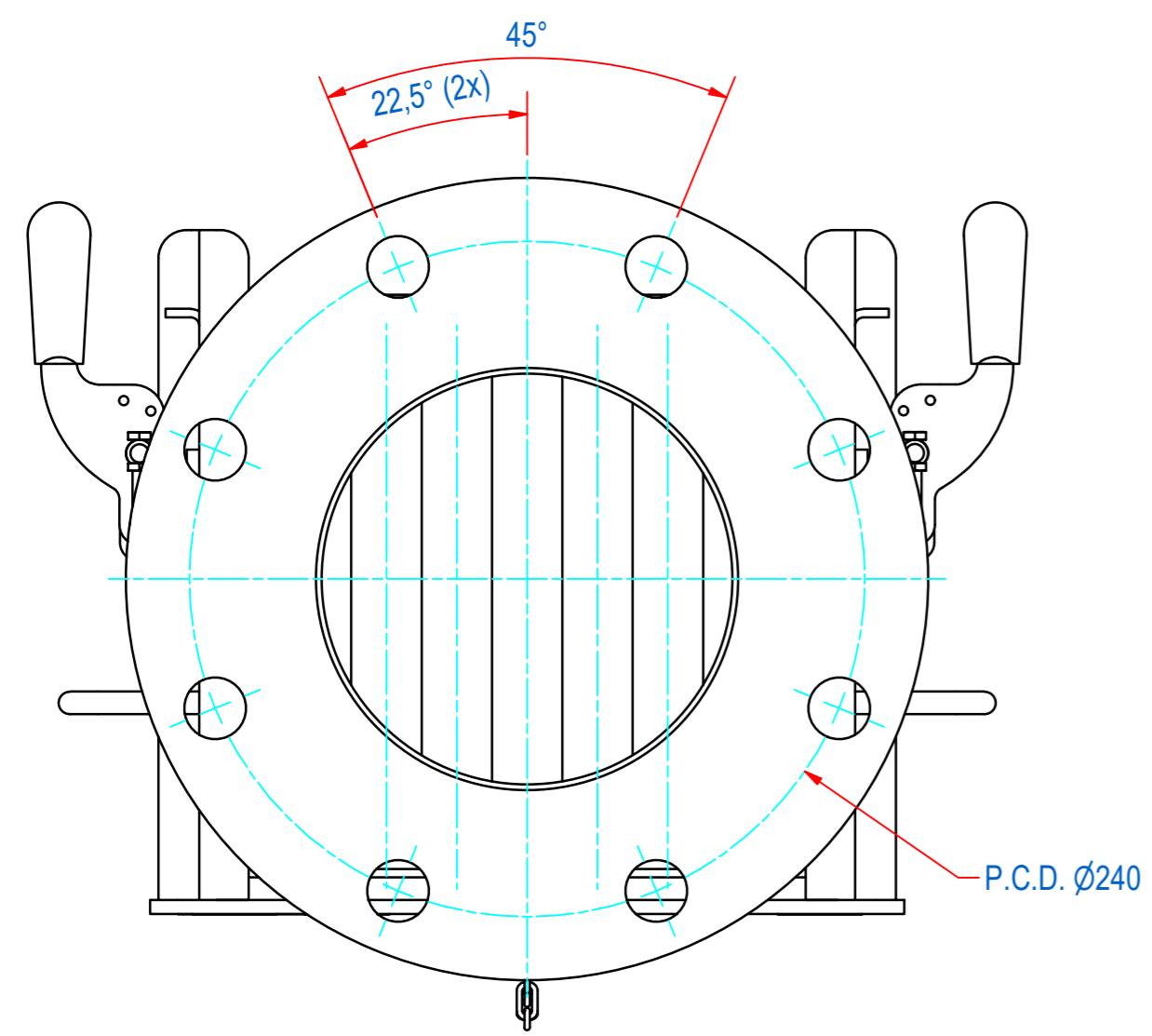


REV	DATE	BY	DESCRIPTION
A	6-3-2014	CR	CLAMP SUPPORT ON HOUSING (ITEM 1) CHANGED
B	20-2-2019	CR	TYPE PLATE AND WARNING STICKERS ADDED
C	17-7-2023	CR	MC-C AND -SR ADDED



ITEM	QTY	PART NUMBER	DESCRIPTION	Dimensions
11	7	72.9900002	PIN, S SLOTTED 3 x 20 - A2	3 x 20
10	8	50.1306010	BOLT, HEX M6x10-A4	M6 x 10
9	3	SBAME100009-205	BAR-N-23-205-25-CPC-NH-B	
8	4	SBAME100000-205	BAR-N-23-205-25-CPC-NW-B	
7	1	E0093454	SECF-000 STICKERS	
6	2	E0086350	SECF-000-TYPE PLATE	
5	1	E0004472	SECF-S-150-SEAL SILI RED EC1935	
4	1	E0004445	SECF-S-D150-EXTRACTOR	
3	1	M15489	SECF-S-LOCK WITH CHAIN "SAFE"	
2	1	M14962	SECF-S-150 FRONT INSERT	
1	1	M14969	SECF-B-D150-F1m HOUSE WELDED	

RAW MAT.	Quantity	Material Number	Material Description	Length (mm)	Width (mm)
1	1				

Sheet: A2	Extra info:	General tolerance: ISO 2768 - mK
Drawn: CR	Weight (kg): 21	Drawn according: ISO268; ISO1101; ISO2553
Date: 12-7-2019	Source: MC-C	Status: Standard
Spare part: False	Quick search: CF150NB	Customer reference number:
Description: SECF-B-D150-07E-N-F1E-W-B-SR	Document number: SECF150638	Doc.Rev: C
	Part number: SECF150638	Rev: C