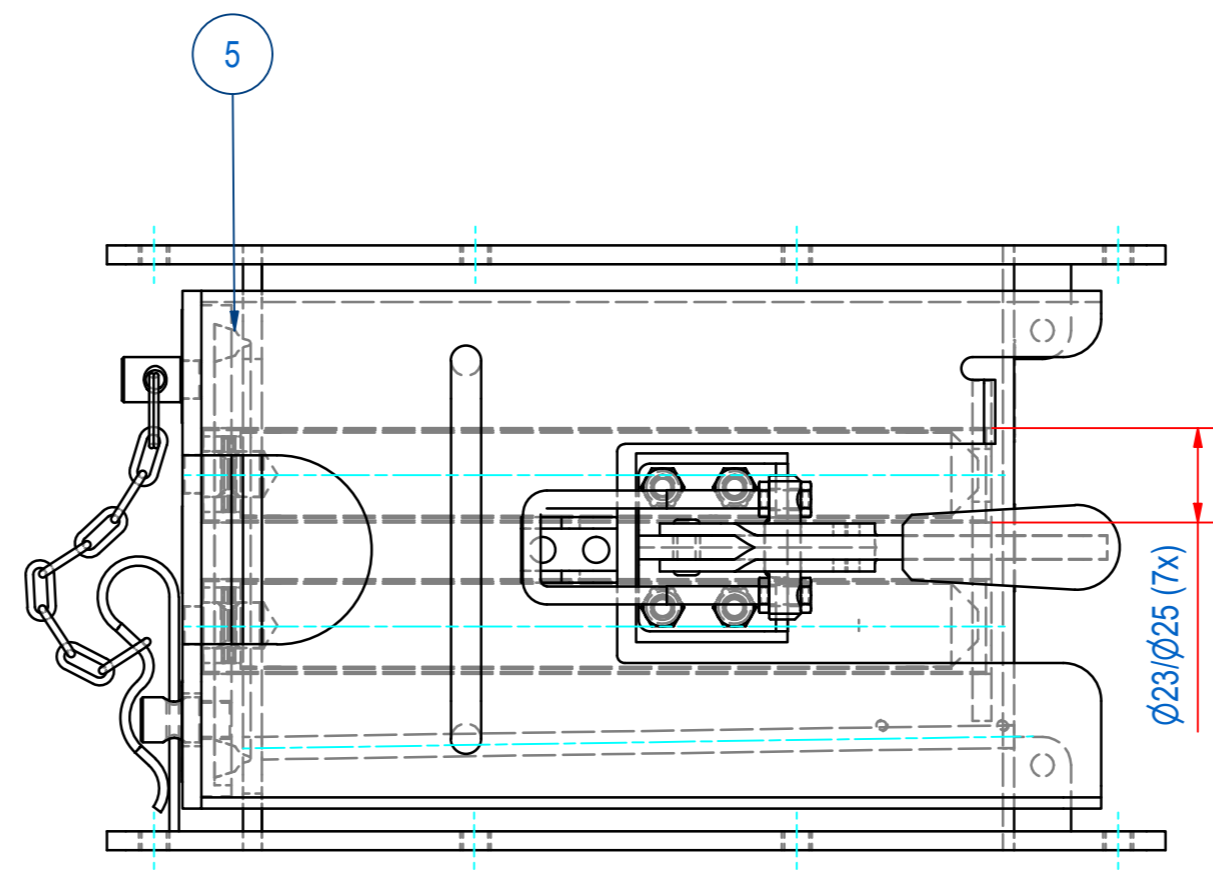
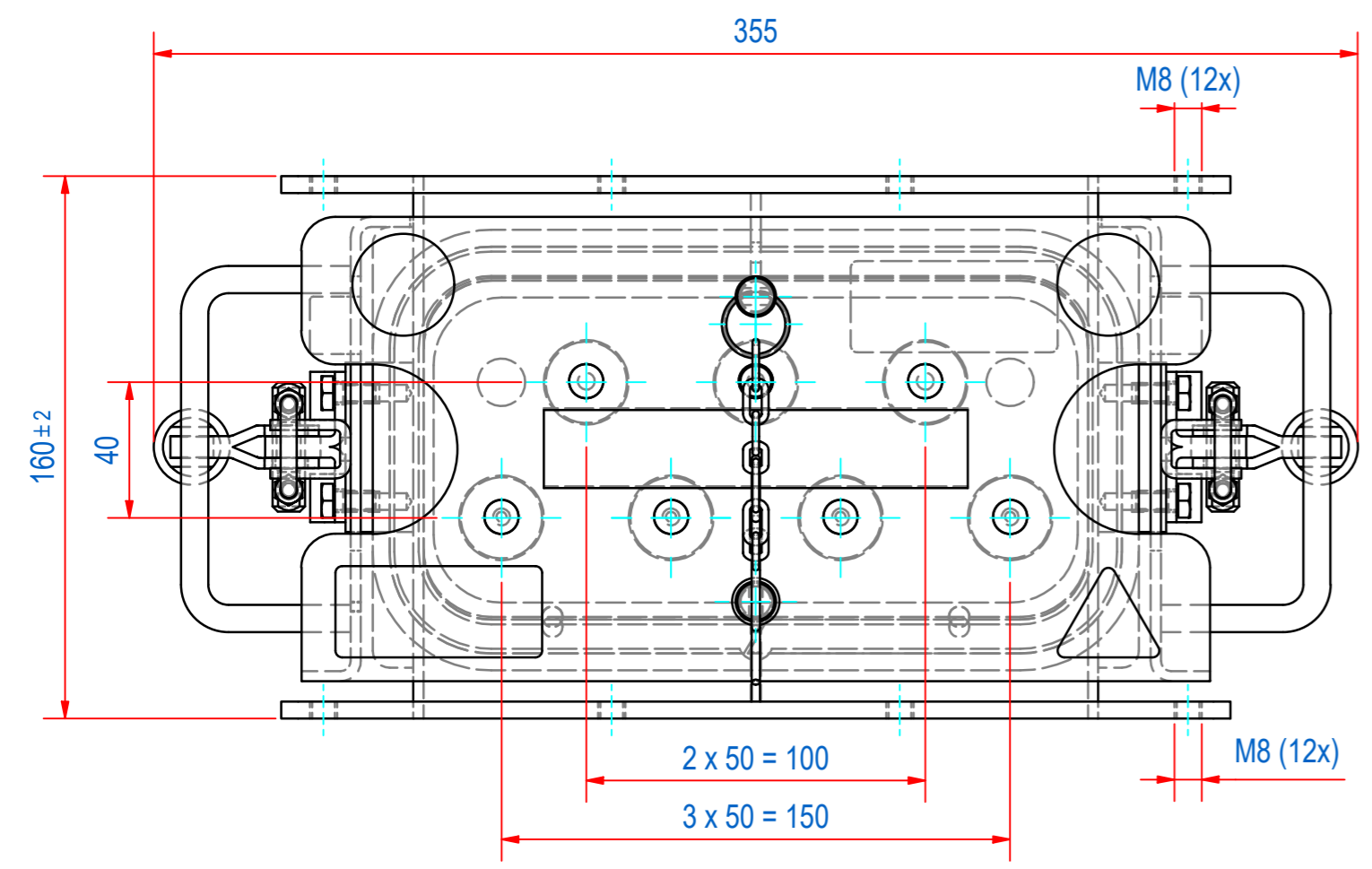
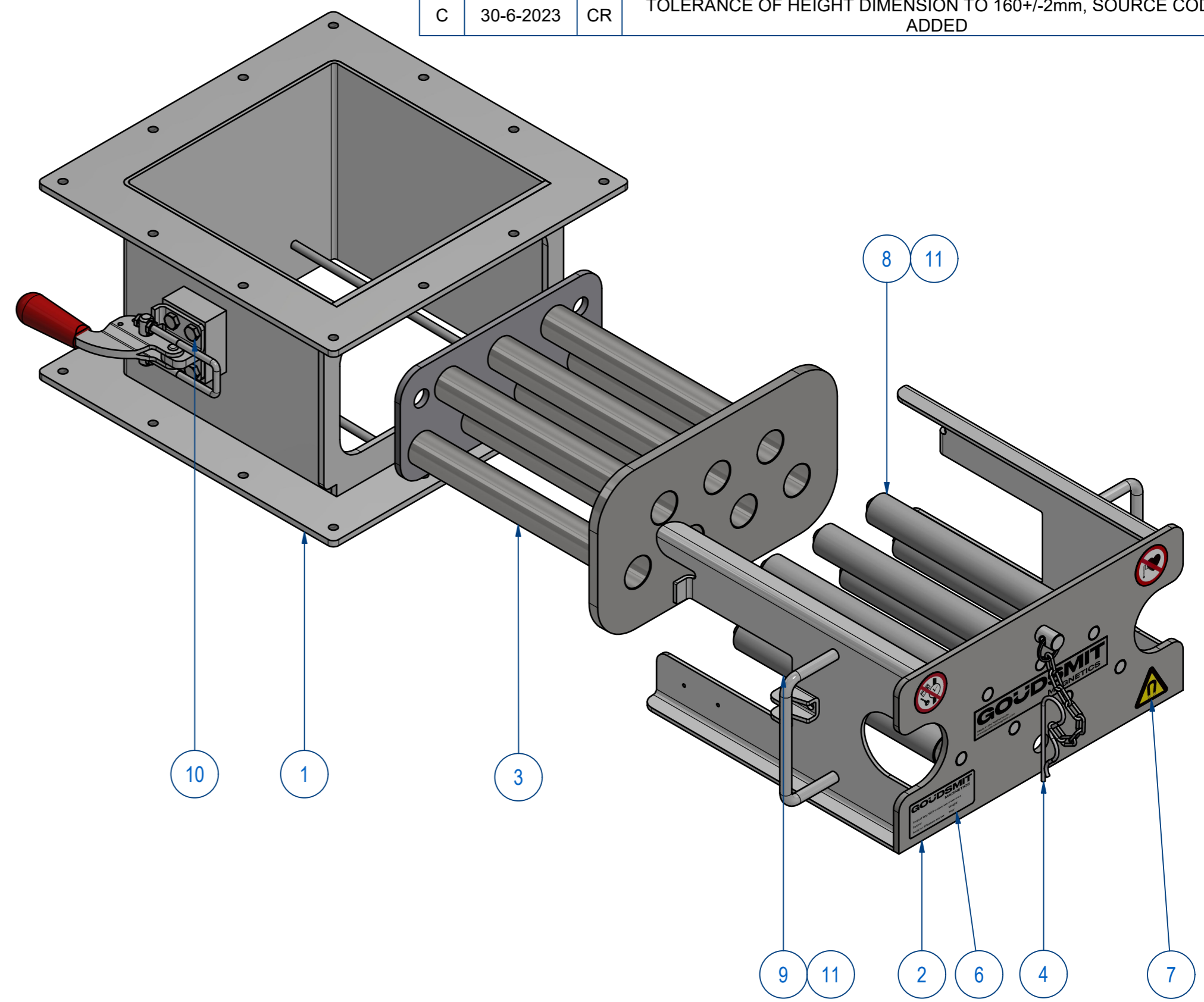
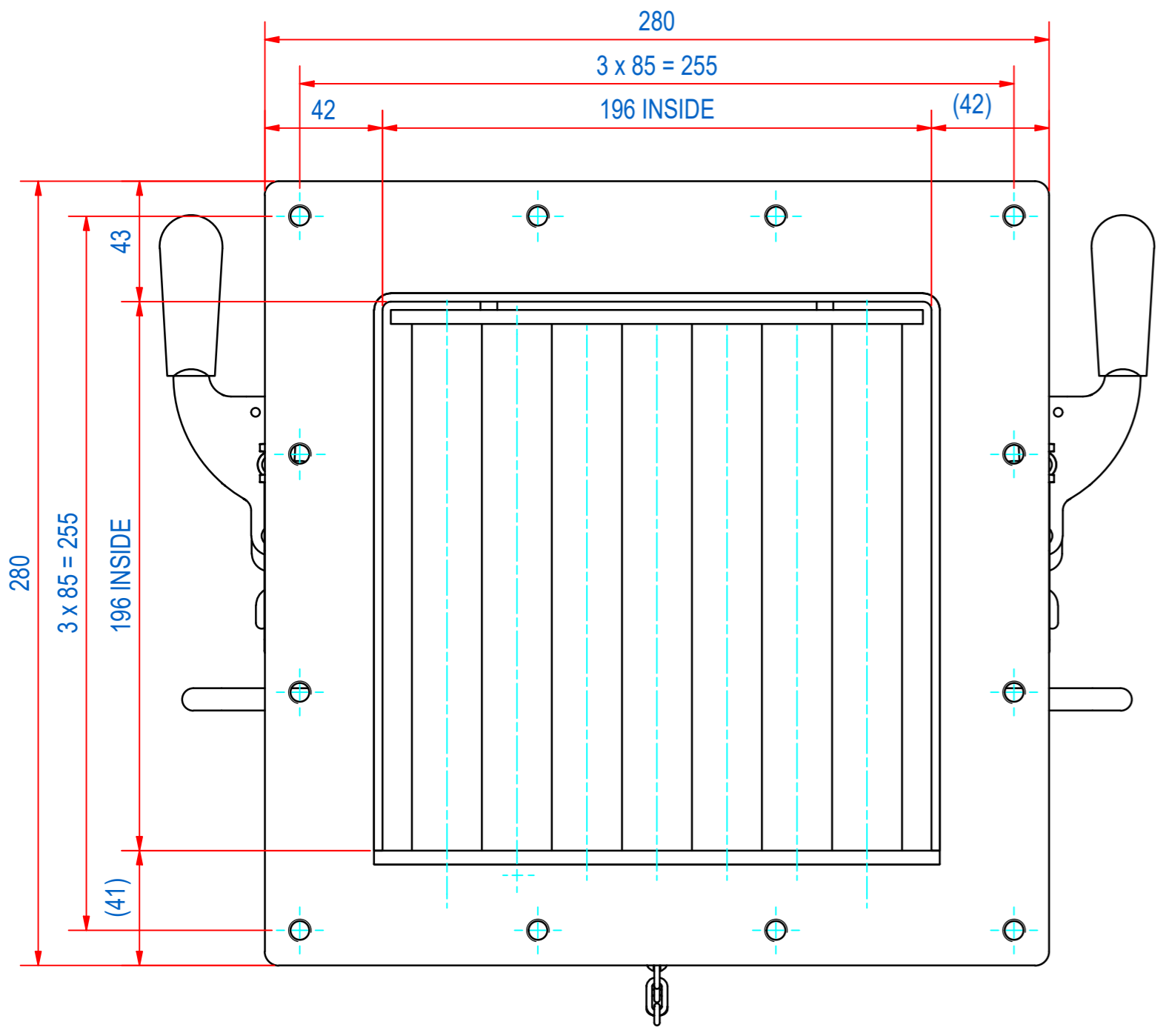


REV	DATE	BY	DESCRIPTION
A	14-6-2018	CR	TYPE PLATE AND WARNING STICKERS ADDED
B	3-7-2019	CR	EXTRACTOR CHANGED: LASER WELDING WAS BRAZING
C	30-6-2023	CR	TOLERANCE OF HEIGHT DIMENSION TO 160+/-2mm, SOURCE CODE ADDED



ITEM	QTY	PART NUMBER	DESCRIPTION	Dimensions
11	7	72.9900002	PIN, S SLOTTED 3 x 20 - A2	3 x 20
10	8	50.1306012	BOLT, HEX M6x12-A4	M6 x 12
9	4	SBAME100009-205	BAR-N-23-205-25-CPC-NH-B	
8	3	SBAME100000-205	BAR-N-23-205-25-CPC-NW-B	
7	1	E0092951	STICKERS FOR SECF	
6	2	E0086350	TYPE PLATE SECF	
5	1	E0005416	SECF-S-2020 SEAL SILI RED EC1935	
4	1	M15489	SECF-S-LOCK WITH CHAIN "SAFE"	
3	1	A110098	SECF-S-2020-EXTRACTOR 7 BARS	
2	1	A110139	SECF-2020-FRONT INSERT	
1	1	A110140	SECF-WELD ASSY HOUSE CF2020	

RAW MAT.	Quantity	Material Number	Material Description	Length (mm)	Width (mm)
⊕	Sheet:	A2	Extra info:	General tolerance: ISO 2768 - mK	
Drawn:	Weight (kg):	CR	16	Drawn according: ISO286; ISO1101; ISO2553	
Date:	3-7-2019	GOUDSMIT MAGNETICS		Status: Standard	
Spare part:	False	Source:	MC-C	Customer reference number:	
Quick search:	CF2020	© All rights reserved. Reproduction is not permitted without written permission of GOUDSMIT Magnetic Systems BV		Document number:	Doc.Rev: C
Description:	SECF-B-2020-07E-N-F5m-W-B-SR	Part number:		SECF200538	Rev: C