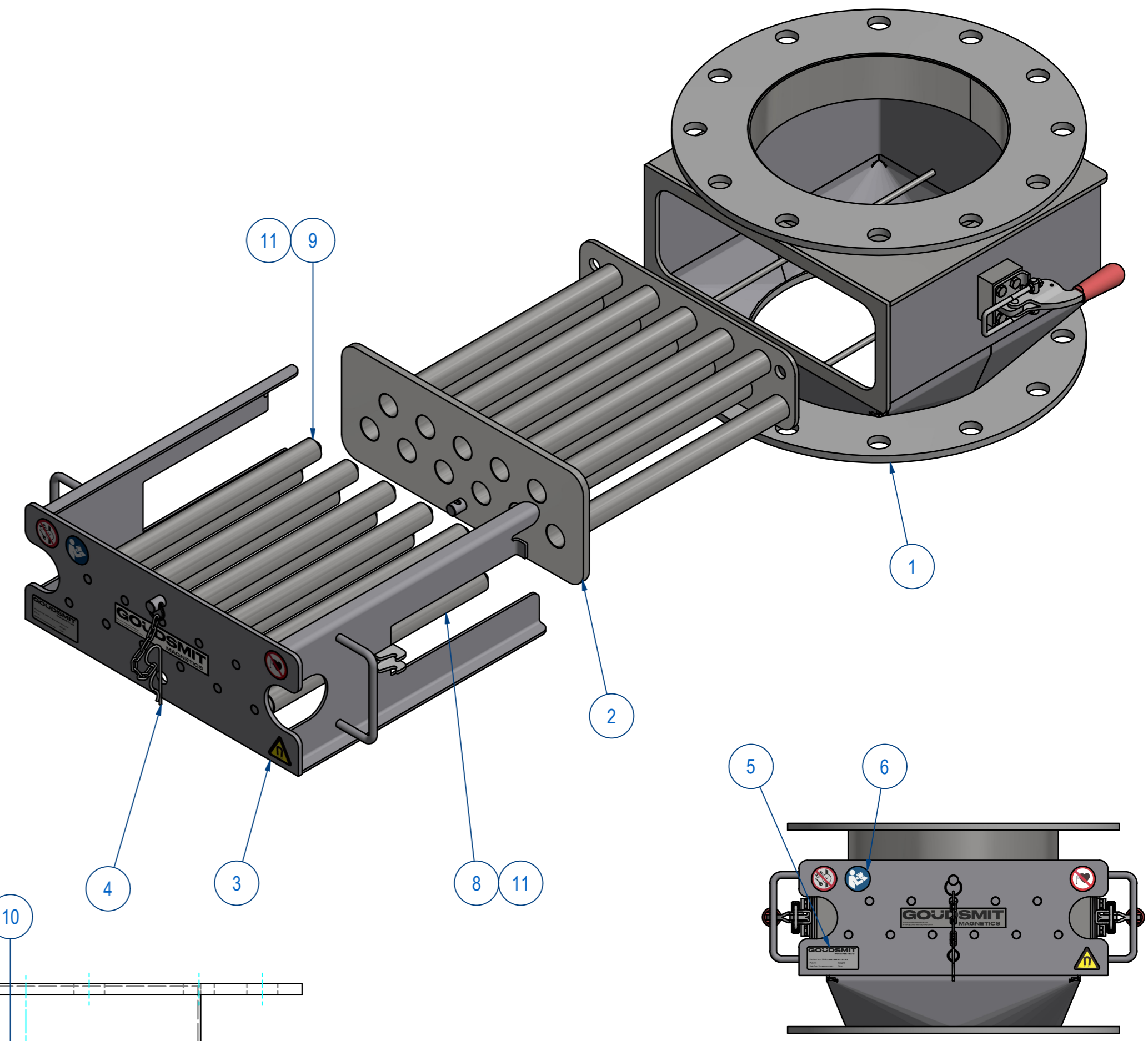
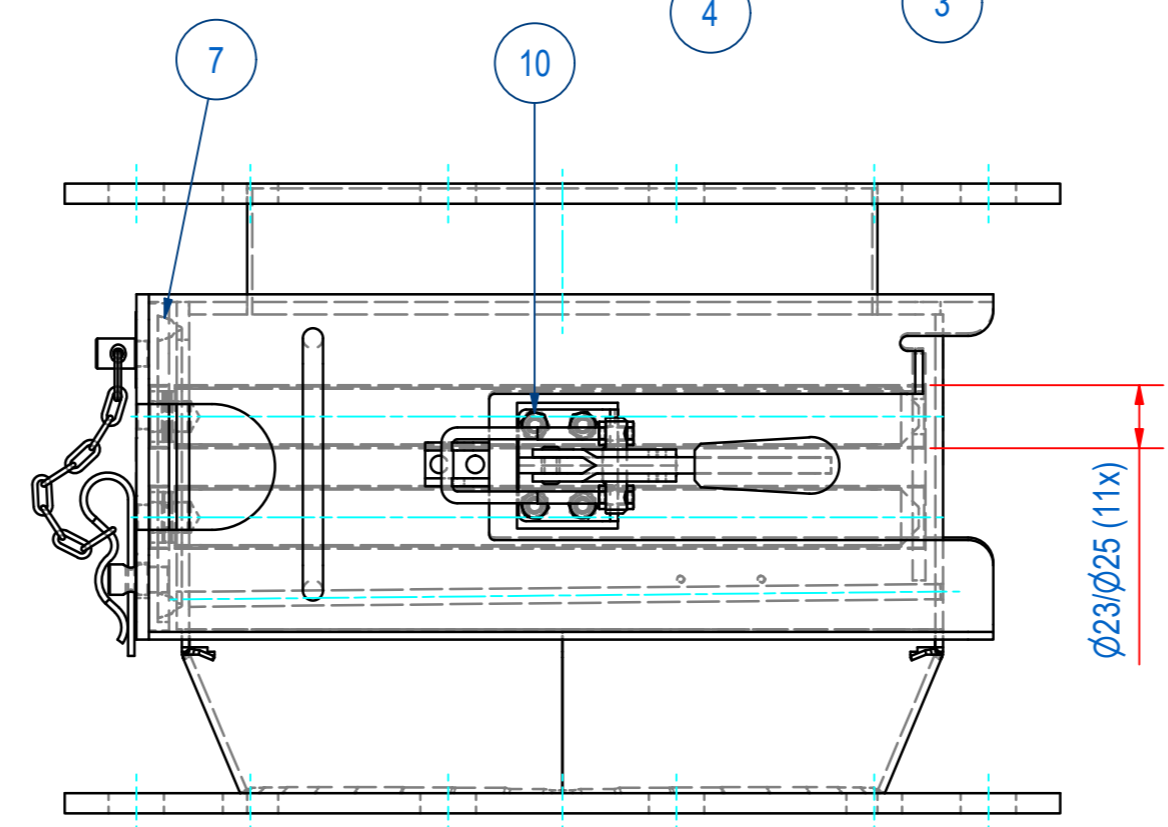
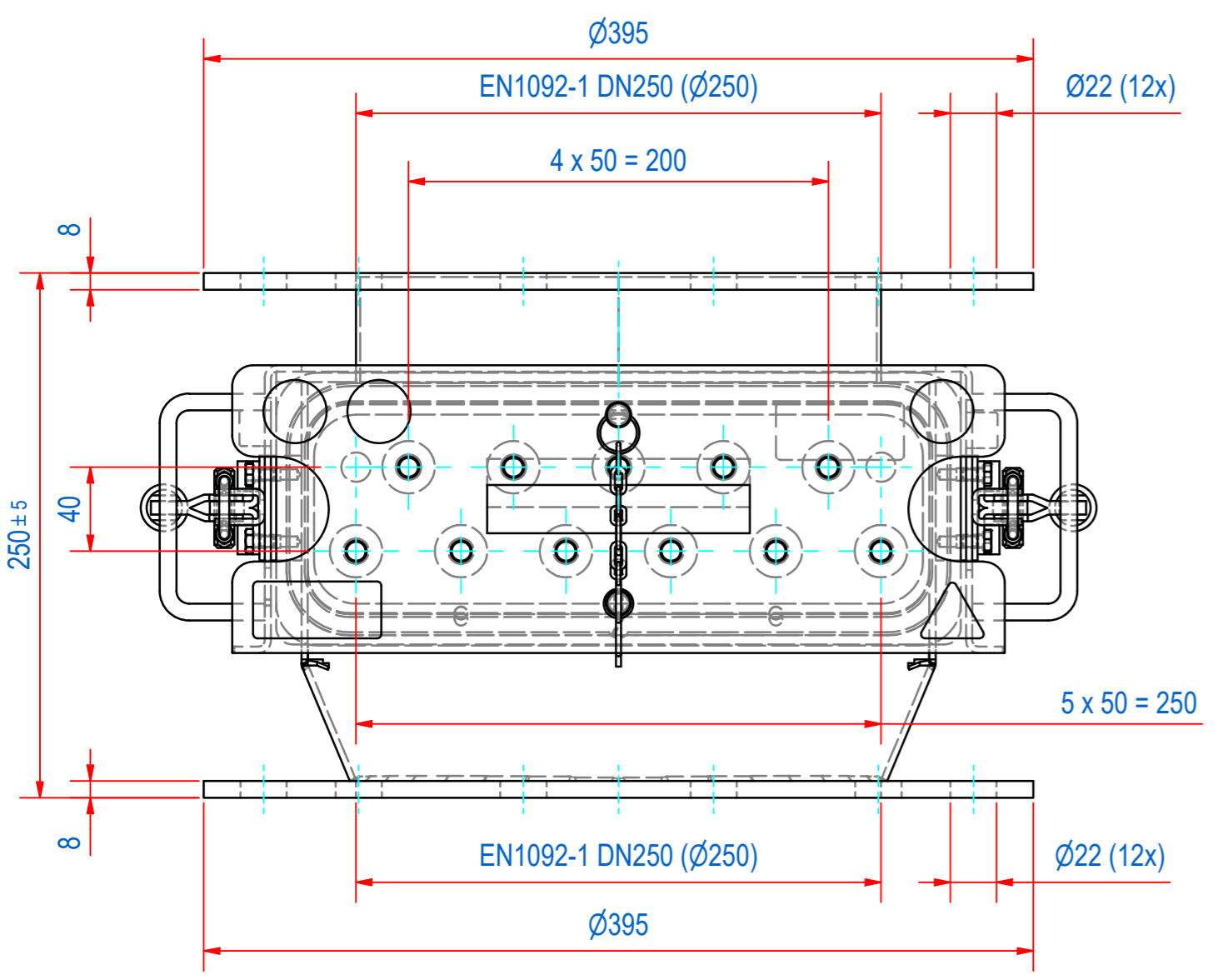
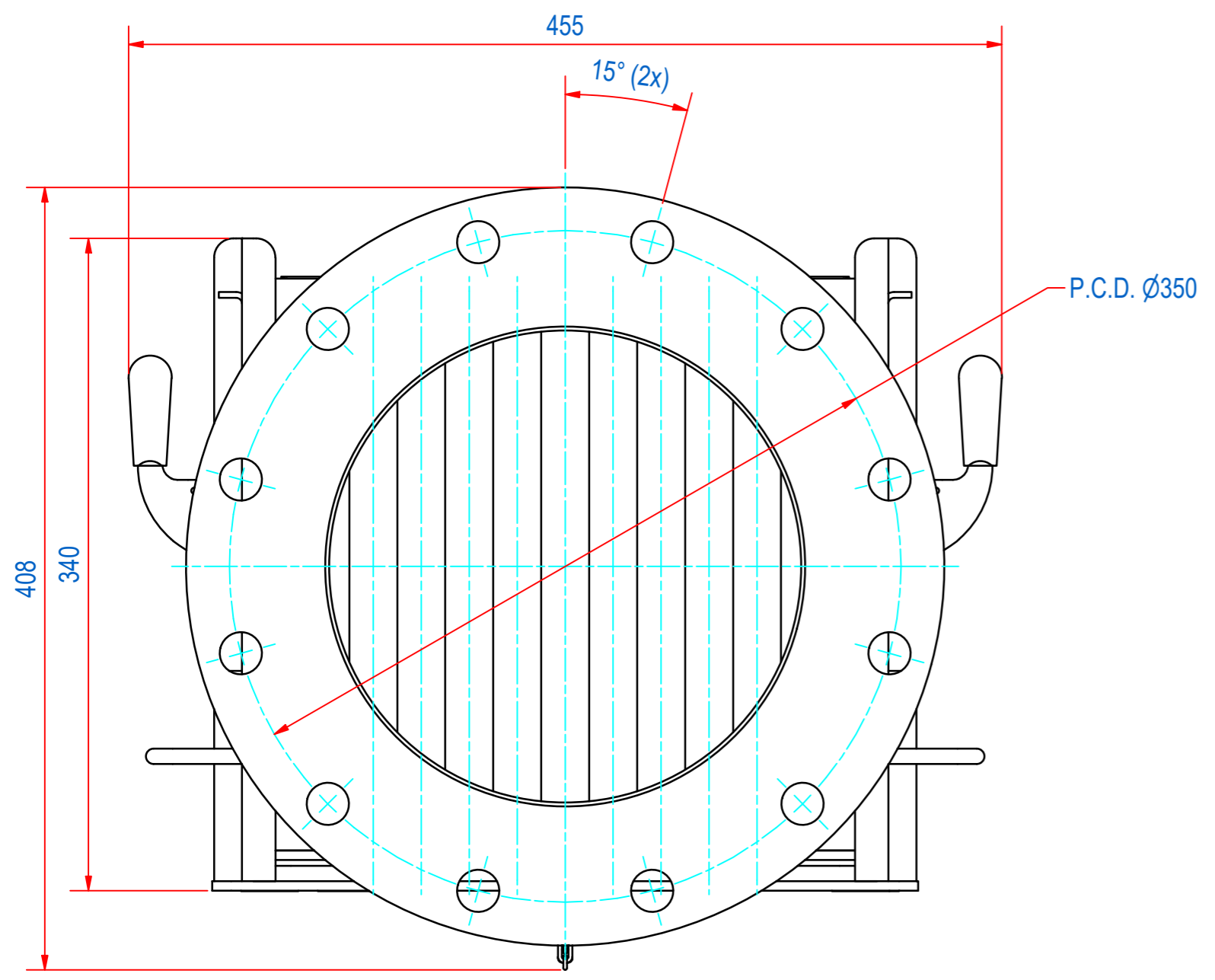


DOC.NR.	REV	DATE	BY	DESCRIPTION
SECF250638	B	2-7-2015	CR	ITEM 9 AND 10 CHANGED
SECF250638	C	13-11-2018	CR	TYPE PLATE AND WARNING STICKERS ADDED
SECF250638	D	18-7-2023	CR	STICKER ADDED; REFER TO INSTRUCTIONS



ITEM	QTY	PART NUMBER	DESCRIPTION	Dimensions
11	11	72.9900002	PIN, S SLOTTED 3 x 20 - A2	3 x 20
10	8	50.1306010	BOLT, HEX M6x10-A4	M6 x 10
9	5	SBAME100009-305	BAR-N-23-305-25-CPC-NW-B	
8	6	SBAME100000-305	BAR-N-23-305-25-CPC-NH-B	
7	1	E0022626	SECF-S-250-SEAL SILI RED EC1935	
6	1	E0093454	SECF-000 STICKERS	
5	2	E0086350	SECF-000-TYPE PLATE	
4	1	M15489	SECF-S-LOCK WITH CHAIN "SAFE"	
3	1	A250178	SECF-S-250 FRONT INSERT	
2	1	A250375	SECF-S-3030 EXTRACTOR 11B	
1	1	M15766	SECF-WELD ASSY HOUSE CF250 316L	

RAW MAT.	Quantity	Material Number	Material Description	Length (mm)	Width (mm)
⊕	1				

Sheet: A2	Extra info:	General tolerance: ISO 2768 - mK
Drawn: CR	Weight (kg): 36	Drawn according: ISO286; ISO1101; ISO2553
Date: 12-7-2019		Status: Standard
Spare part: False	Source: MC-C	Customer reference number:
Quick search: CF250NB		
Description: SECF-B-D250-11E-N-F1E-W-B-B-SR	Document number: SECF250638	Doc.Rev: D
	Part number: SECF250638	Rev: D