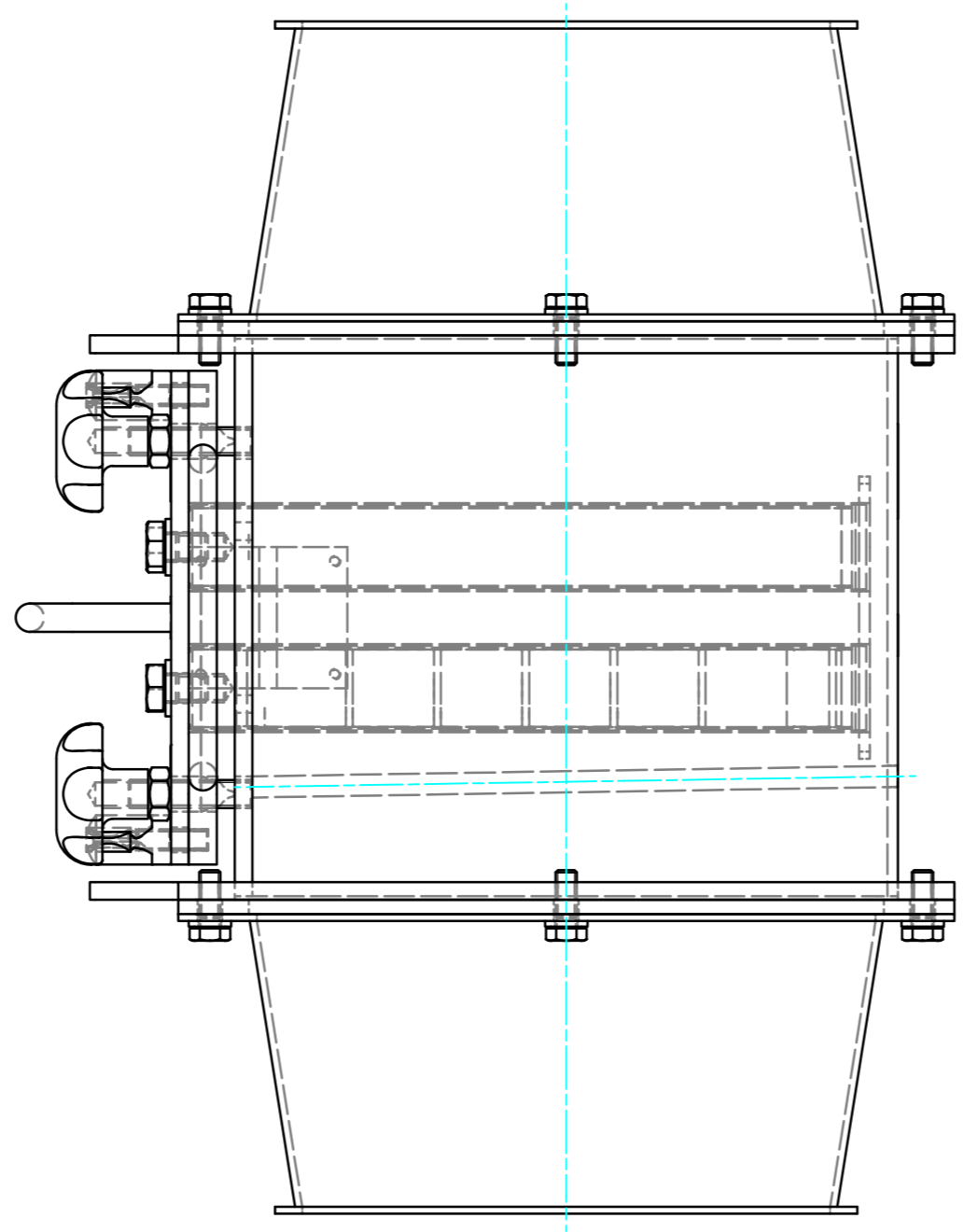
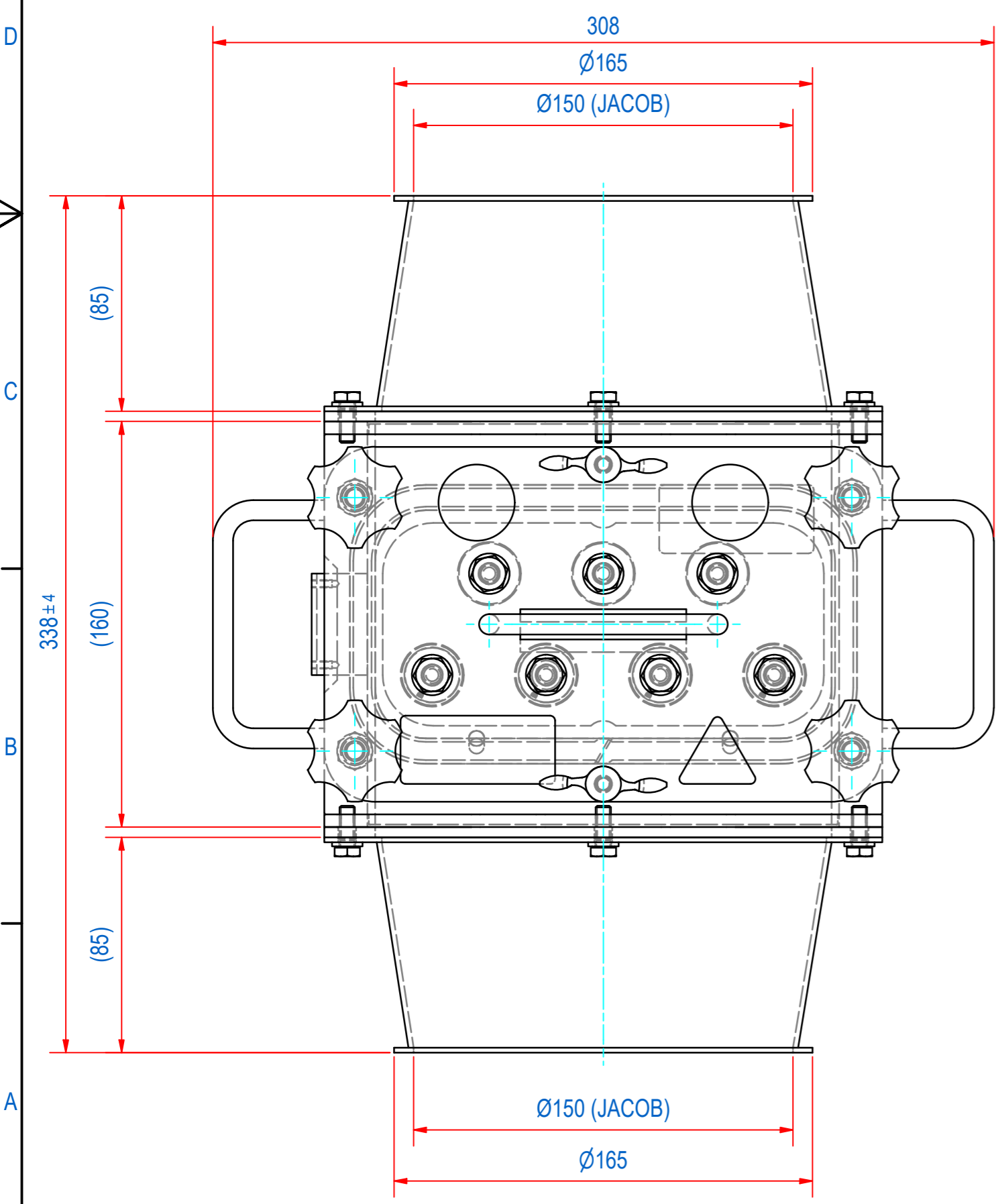
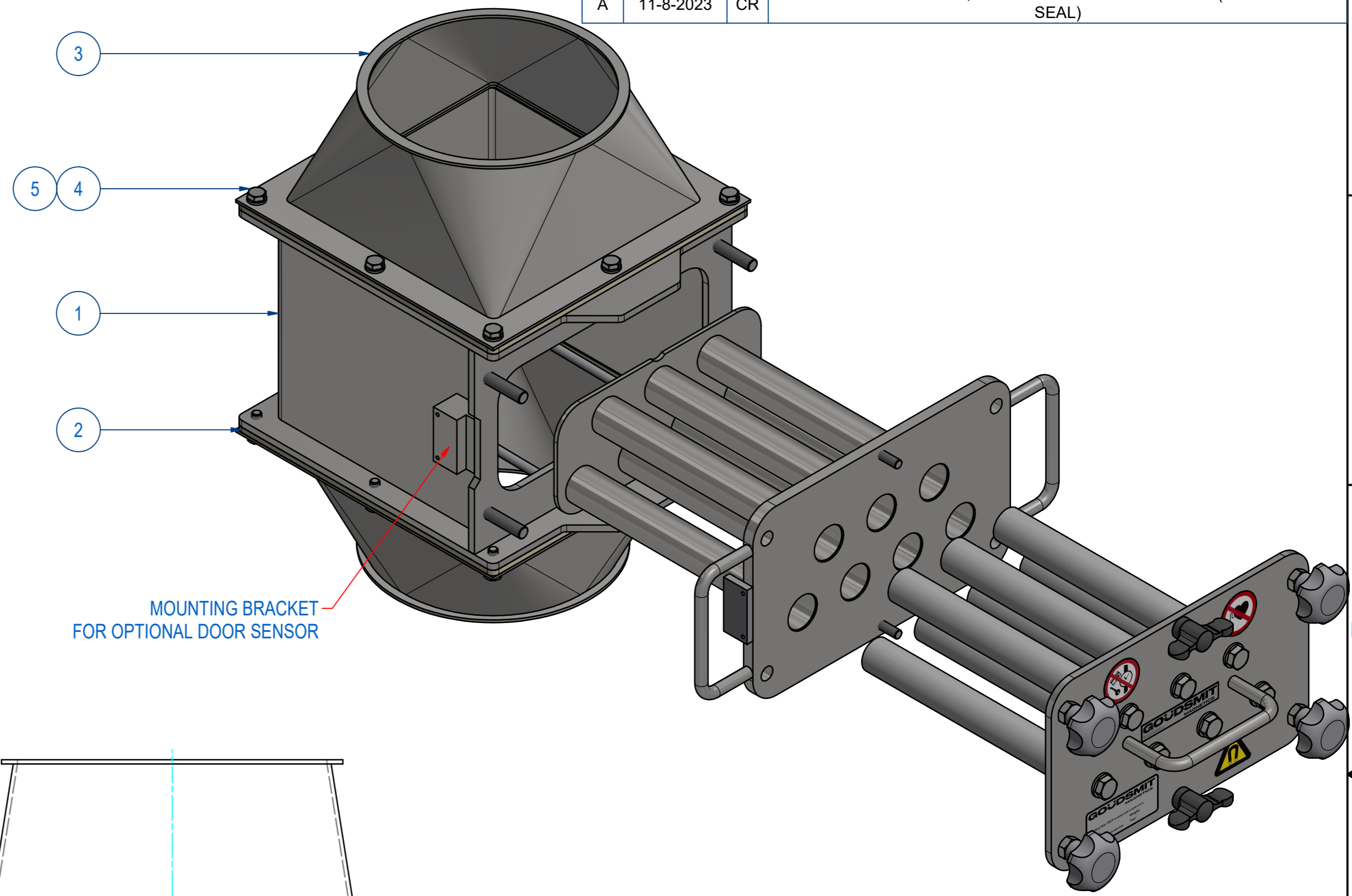
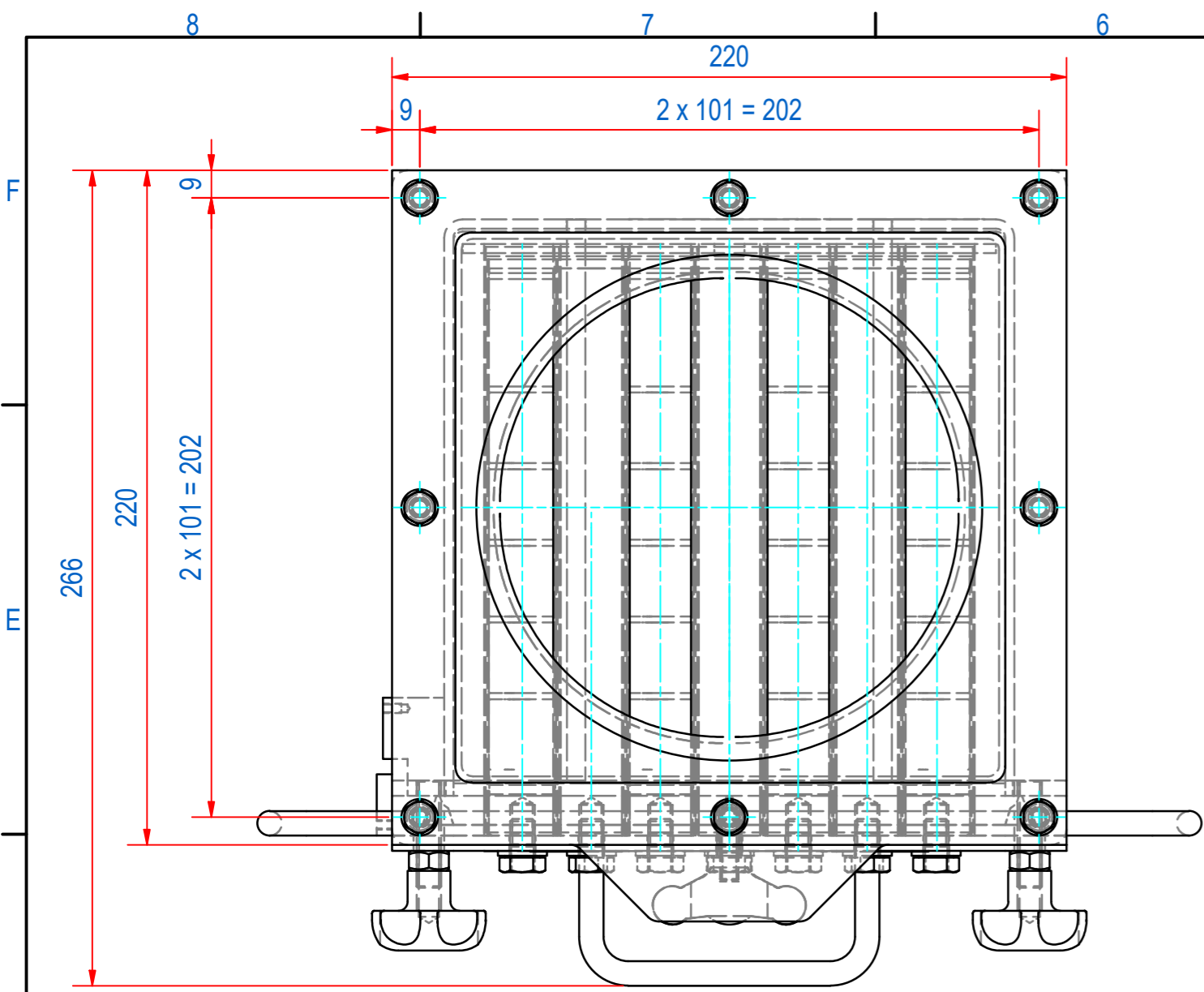


REV	DATE	BY	DESCRIPTION
-	11-9-2014	CR	NEW REVISION VAULT, NOTHING CHANGED, OLD REV WAS A
A	11-8-2023	CR	SOURCE CODE ADDED, -SR ADDED TO PRODUCT KEY (SILICON RED SEAL)



ITEM	QTY	PART NUMBER	DESCRIPTION	Dimensions
5	16	70.0300006	WASHER M6 - A4	M6
4	16	50.1306016	BOLT, HEX M6x16-A4	M6 x 16
3	2	95.1509907	JACOB RED V180-D150/H85 316L	
2	2	P250261	SECFP-S-1515-SEAL SILIC EC1935	
1	1	SECFP18030	SECF-P-1818-07E-N-F1m-W-B-B-SR	

RAW MAT.	Quantity	Material Number	Material Description	Length (mm)	Width (mm)
1	1				

Sheet: A2 Drawn: CR Date: 3-10-2012 Spare part: False Quick search: CFQ150	Extra info: Weight (kg): 15 Source: MC-C Description: SECF-P-D150-07E-N-F1m-W-B-B-SR	General tolerance: ISO 2768 - mK Drawn according: ISO286; ISO1101; ISO2553 Status: Standard Customer reference number: Document number: SECFQ15030 Doc.Rev: A Part number: SECFQ15030 Rev: A
---	--	--



© All rights reserved. Reproduction is not permitted without written permission of GOUDSMIT Magnetic Systems BV