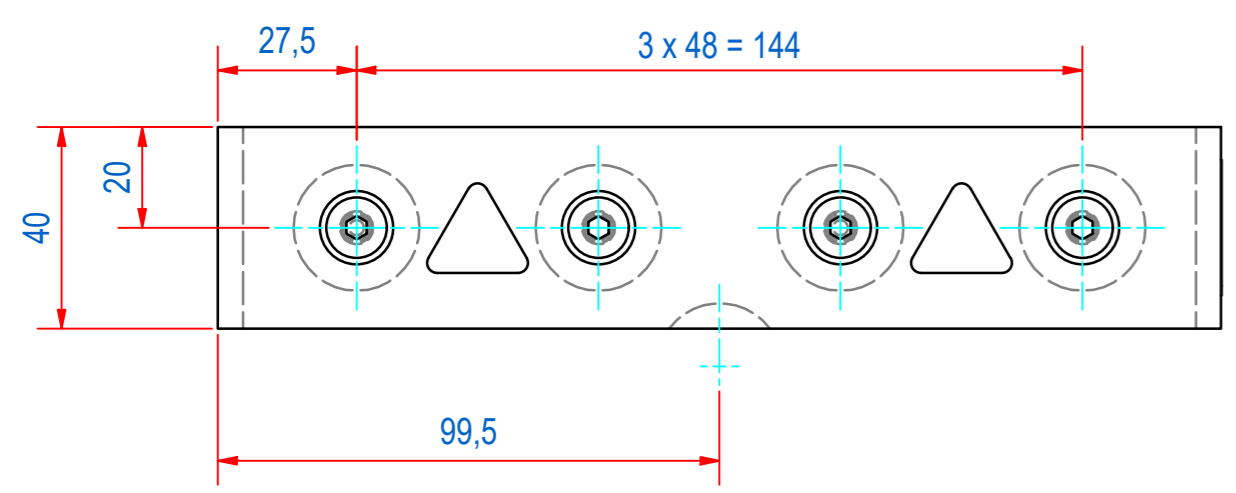
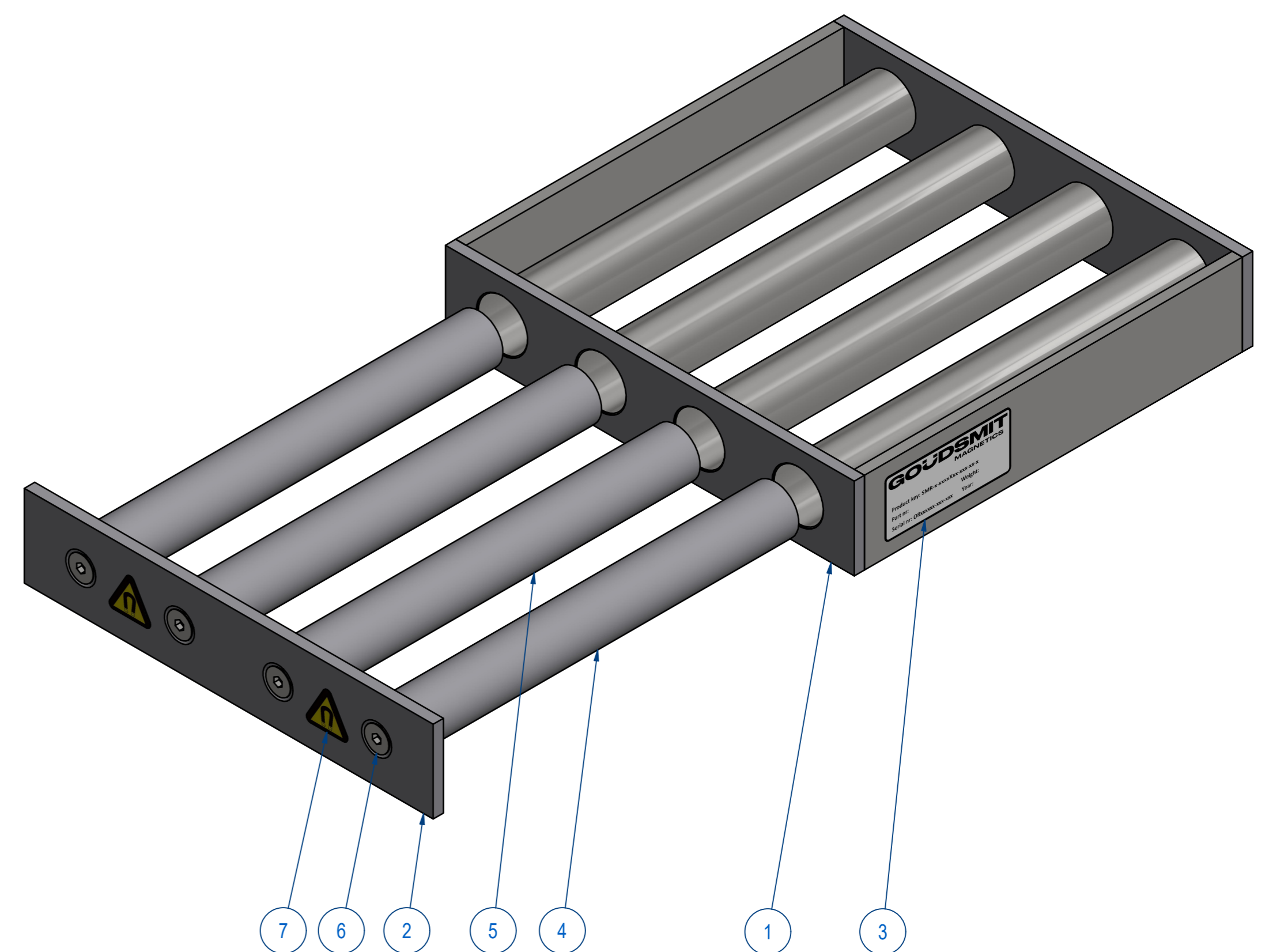
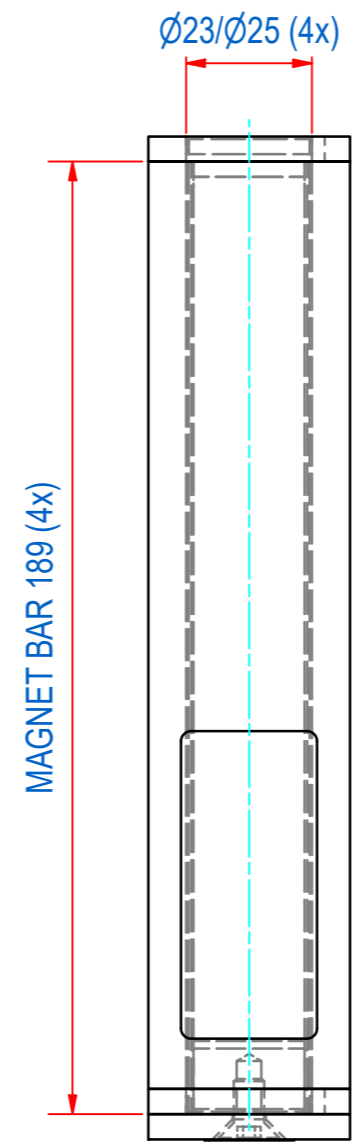
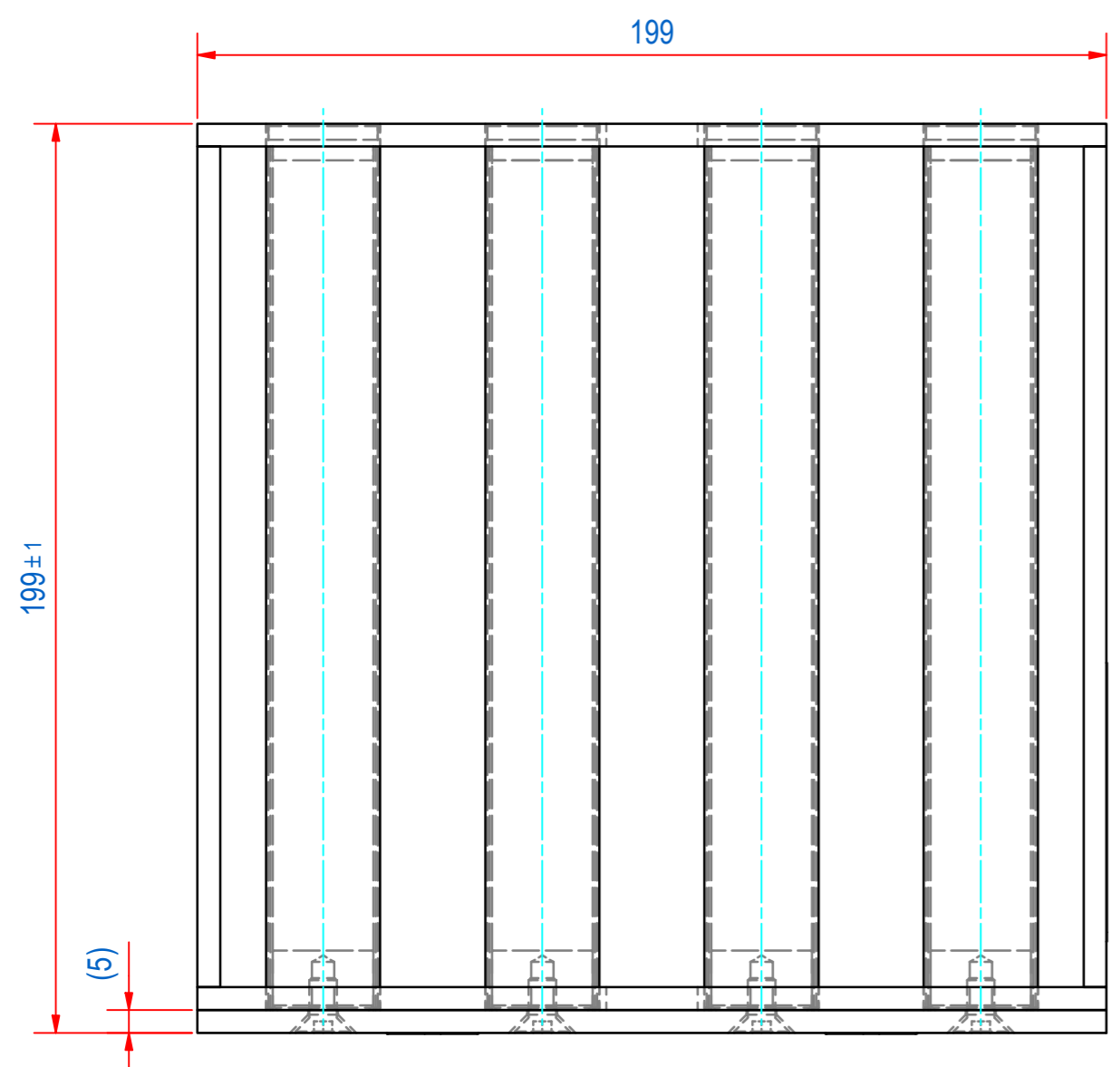


REV	DATE	BY	DESCRIPTION
-	29-7-2013	CR	NEW REVISION VAULT, NOTHING CHANGED, OLD REV WAS C
A	9-1-2019	CR	STAGGERED BARS, TYPE PLATE EN WARNING STICKERS ADDED
B	22-10-2020	CR	UNDERLYING DRAWING CHANGED



ITEM	QTY	PART NUMBER	DESCRIPTION	Dimensions
7	2	1000.20080	STICKER MAGNETIC FIELD 20mm	
6	4	52.0306012	SCREW, HEX S CS M6x12 - A4	M6x12
5	2	SBAMA100019-189	BAR-N-23-189-25-1M6-NH-B	
4	2	SBAMA100010-189	BAR-N-23-189-25-1M6-NW-B	
3	1	E0086577	TYPE PLATE SQUARE GRID SMR	
2	1	S240044	SMR-FRONT MAGNET STRIP 40x5 L199	
1	1	A240027	SMR-2020 EXTRACTOR LASER 316L	

RAW MAT.	Quantity	Material Number	Material Description	Length (mm)	Width (mm)
	1				

Sheet: A2	Extra info: MAGNETIC GRID	General tolerance: ISO 2768- mK
Drawn: CR	Weight (kg): 4,1	Drawn according: ISO286; ISO1101; ISO2553
Date: 18-9-2001		Status: Standard
Spare part: False	Source: MC-C	Customer reference number:
Quick search: MRNB2020		
Description: SMR-N-0200x200x40-04E-S6-B	Document number: SEMR202038	Doc.Rev: B
	Part number: SEMR202038	Rev: B