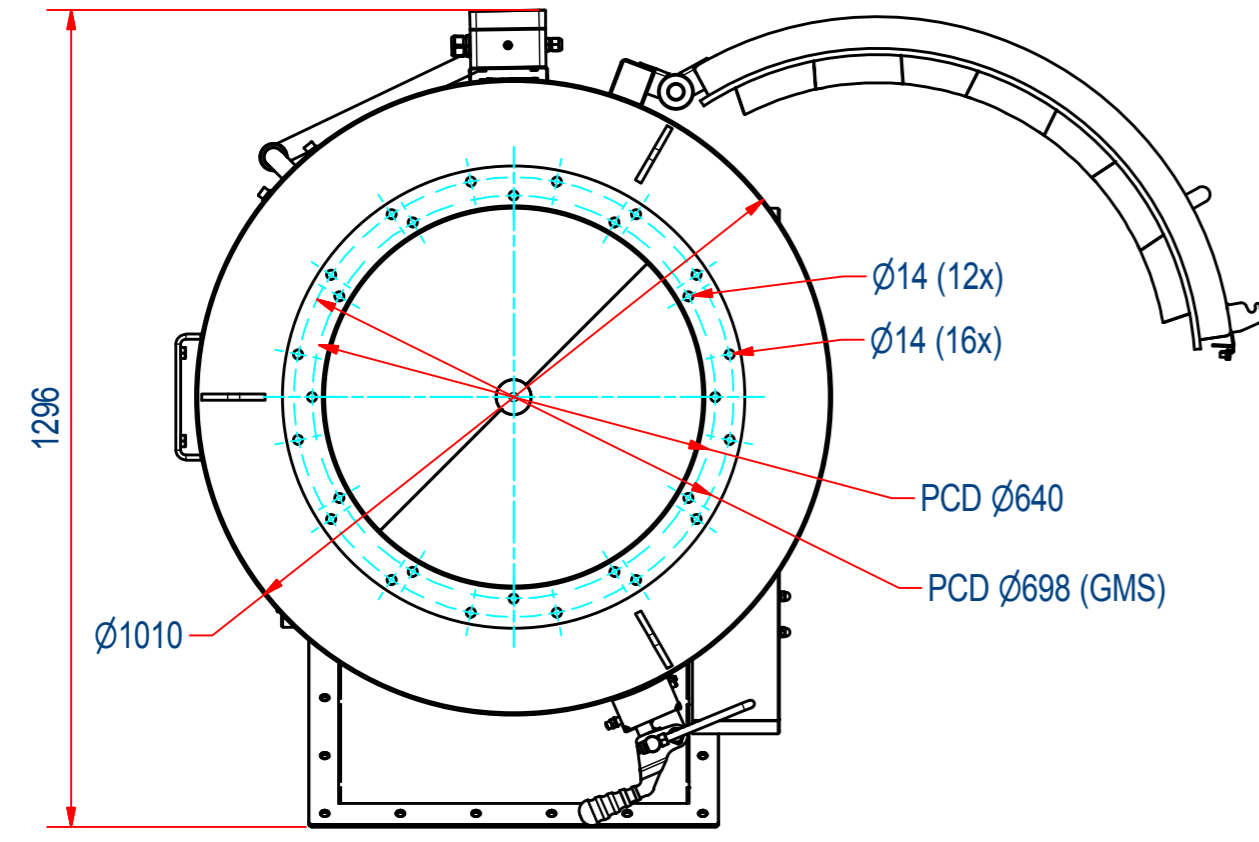
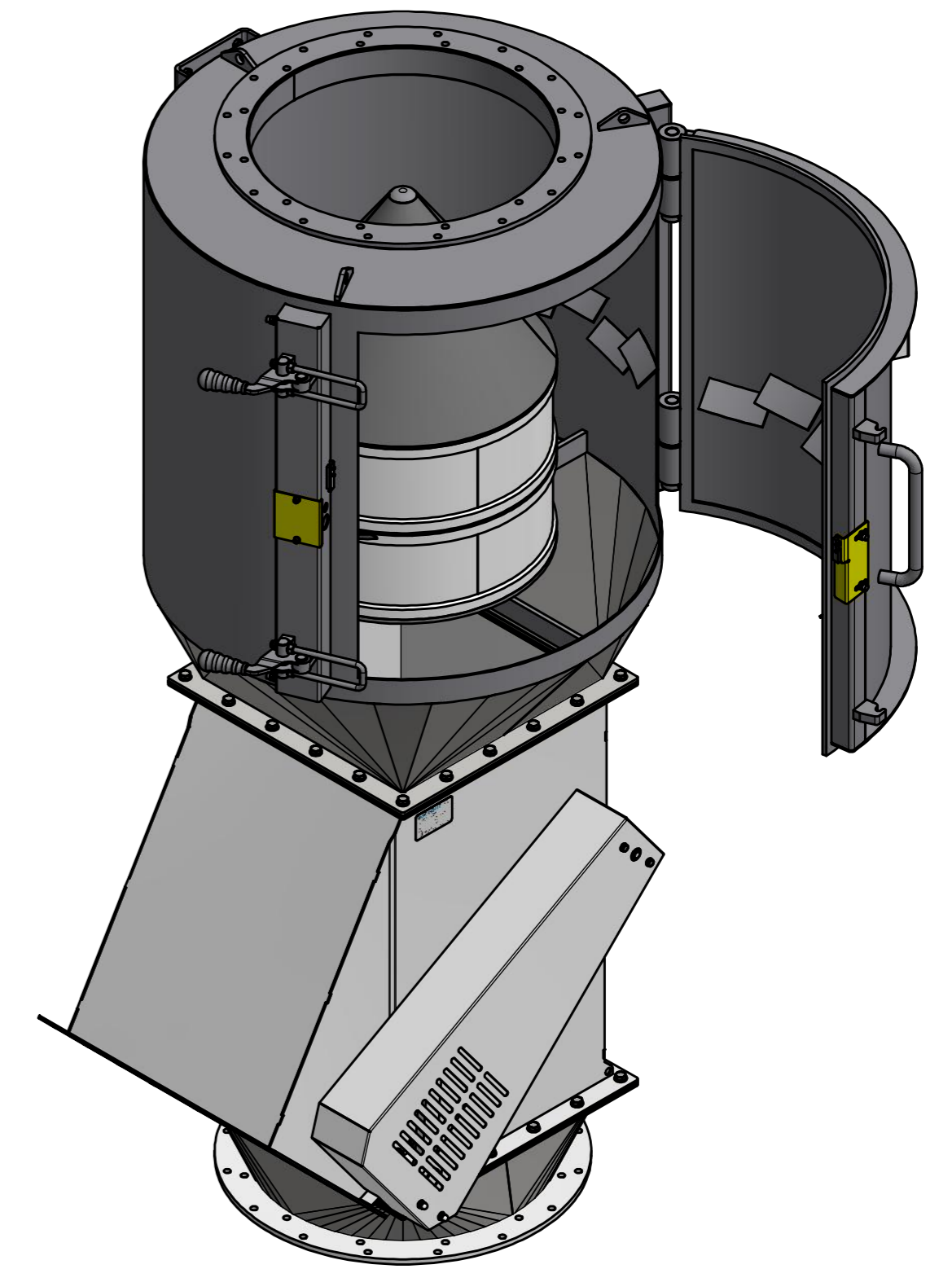
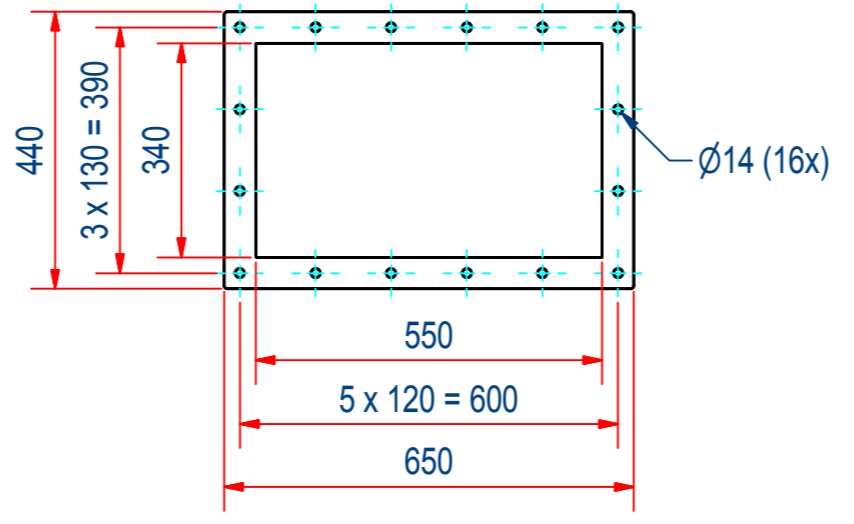


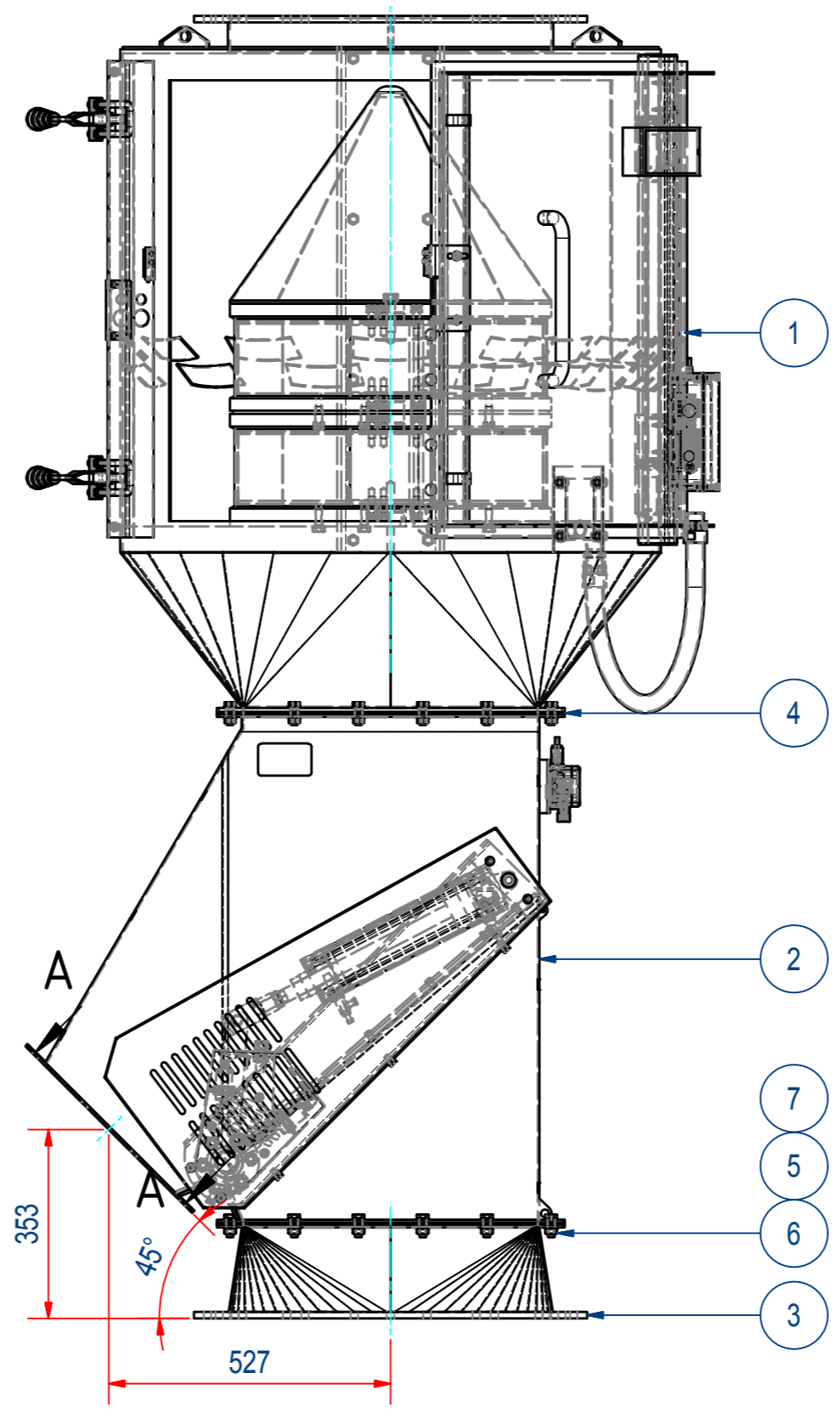
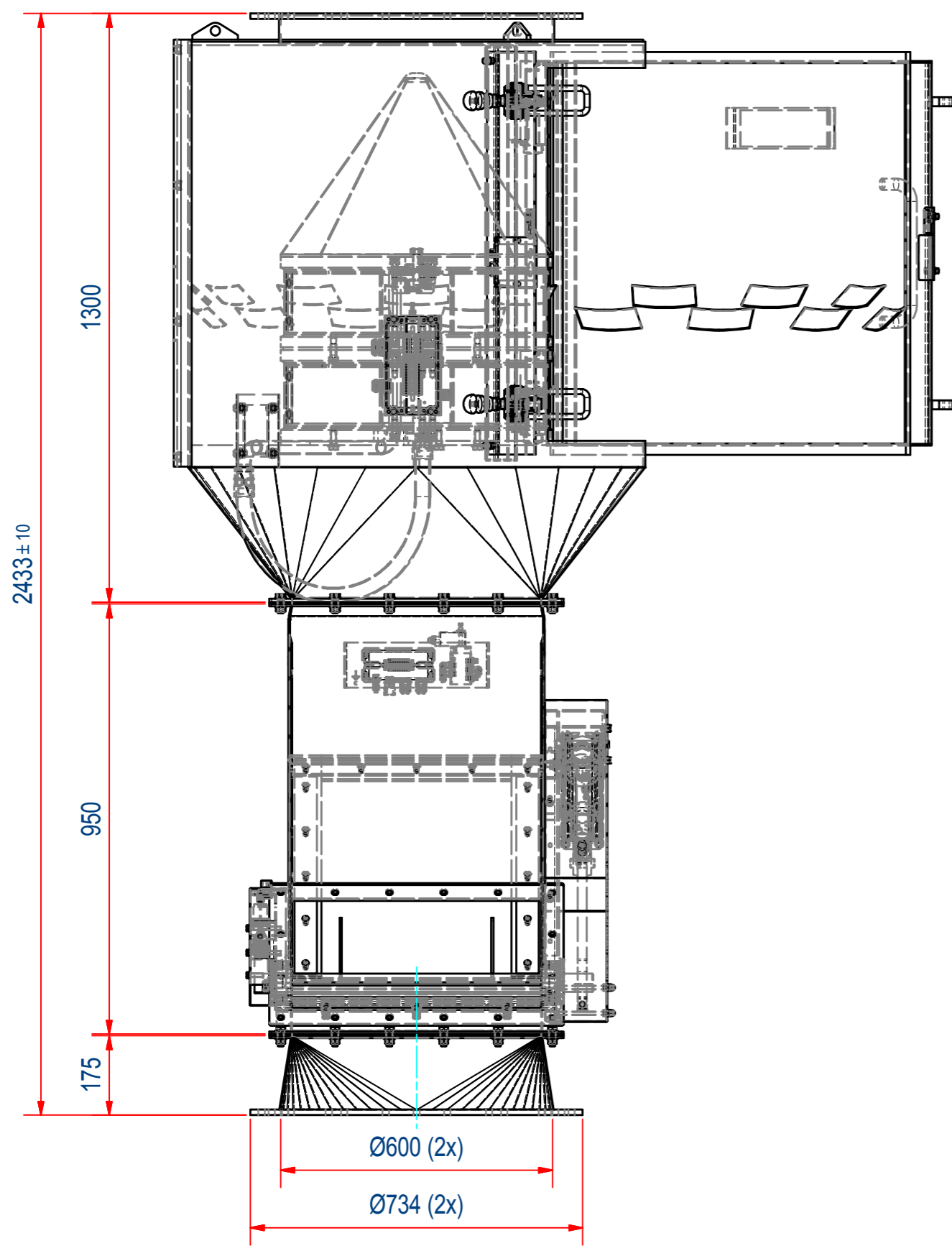
REV	DATE	BY	DESCRIPTION
-	7-1-2014	AvD	ORIGINAL DRAWING
A	1-7-2014	CR	HEIGHT CHANGED: 2433MM WAS 2503MM



A-A
FLANGE OUTLET



ATEX VERSION REFERS TO KEMA SCHEDULED DRAWING NR'S: M79009, M79010, M79011, M79012, M79014 AND M60398



ITEM	QTY	PART NUMBER	DESCRIPTION	Dimensions
7	80	70.0200012	WASHER M 12- A2	M 12
6	40	60.0200012	NUT, HEX M12 - A2	M12
5	40	50.1212035	BOLT, HEX M12x35 - A2	M12x35
4	2	SGAF555551	GASKET 650x550 MVQ SILICONE	
3	1	SERE555525	RED #550-D600 H175 DIN24154 304L	
2	1	SPKK550006	SPKK-S-550-950-C-Ex	
1	1	SPAE000067	SPA-7-B-FI-OS-ST-Ex-D-B	

RAW MAT.	QTY	MAT. NUMBER	MAT. DESCRIPTION	LENGTH (mm)	WIDTH (mm)
Sheet:	A2	Extra info:	General tolerance:	ISO 2768 - mK	
Drawn:	AVD	Weight (kg):	1133,2	Drawn according:	
Date:	7-1-2014	Goudsmit MAGNETIC SYSTEMS		ISO268; ISO1101; ISO2553	
Spare part:	False	© All rights reserved. Reproduction is not permitted without written permission of GOUDSMIT Magnetic Systems BV		Status: Standard	
Quick search:	EM7 EX	Description: SPA-7-V-FI-FO-ST-Ex-D-B		Customer reference number:	
			File number:	SPAA001067	Rev: A
			Part number:	SPAA001067	Rev: A