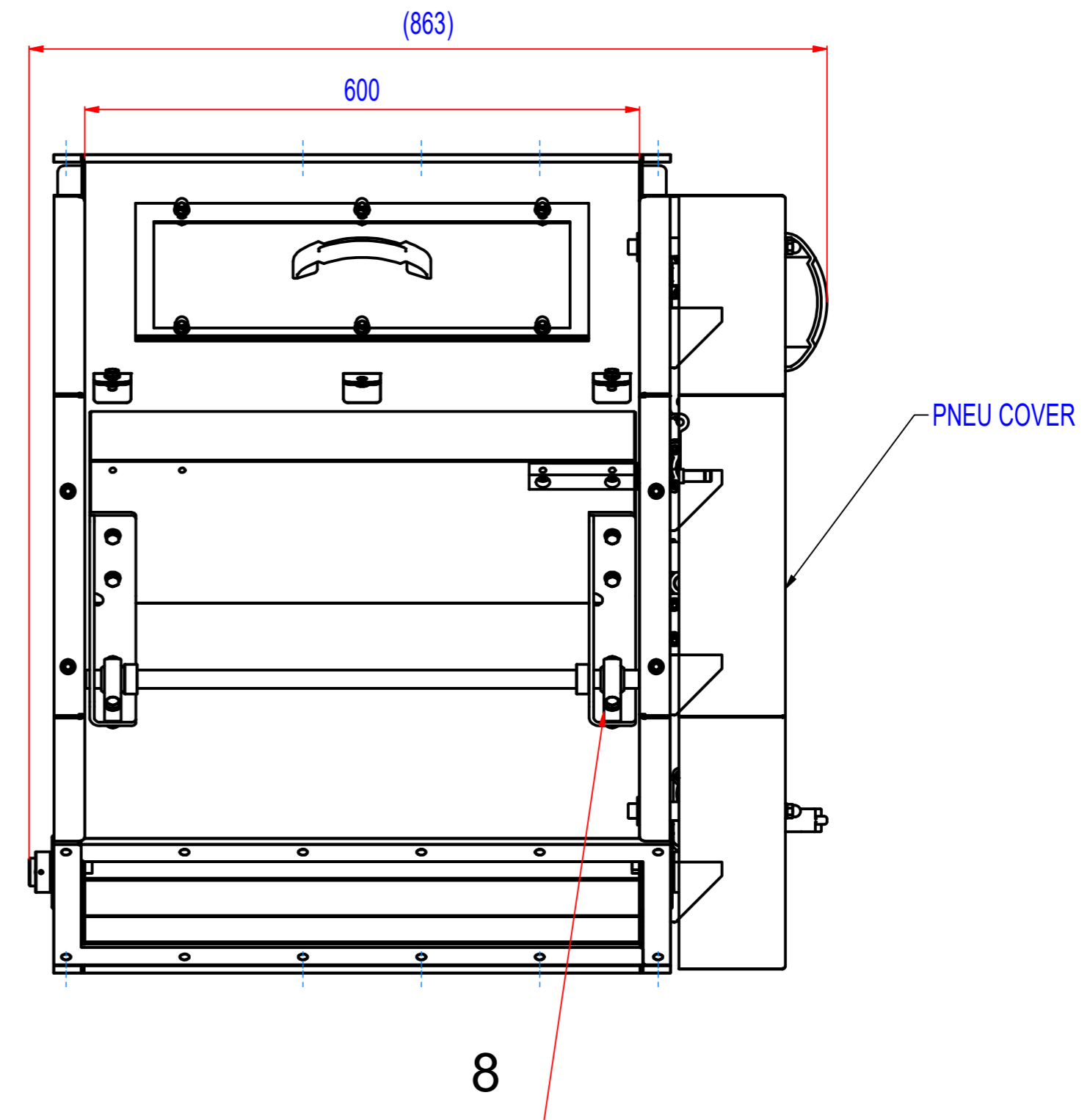
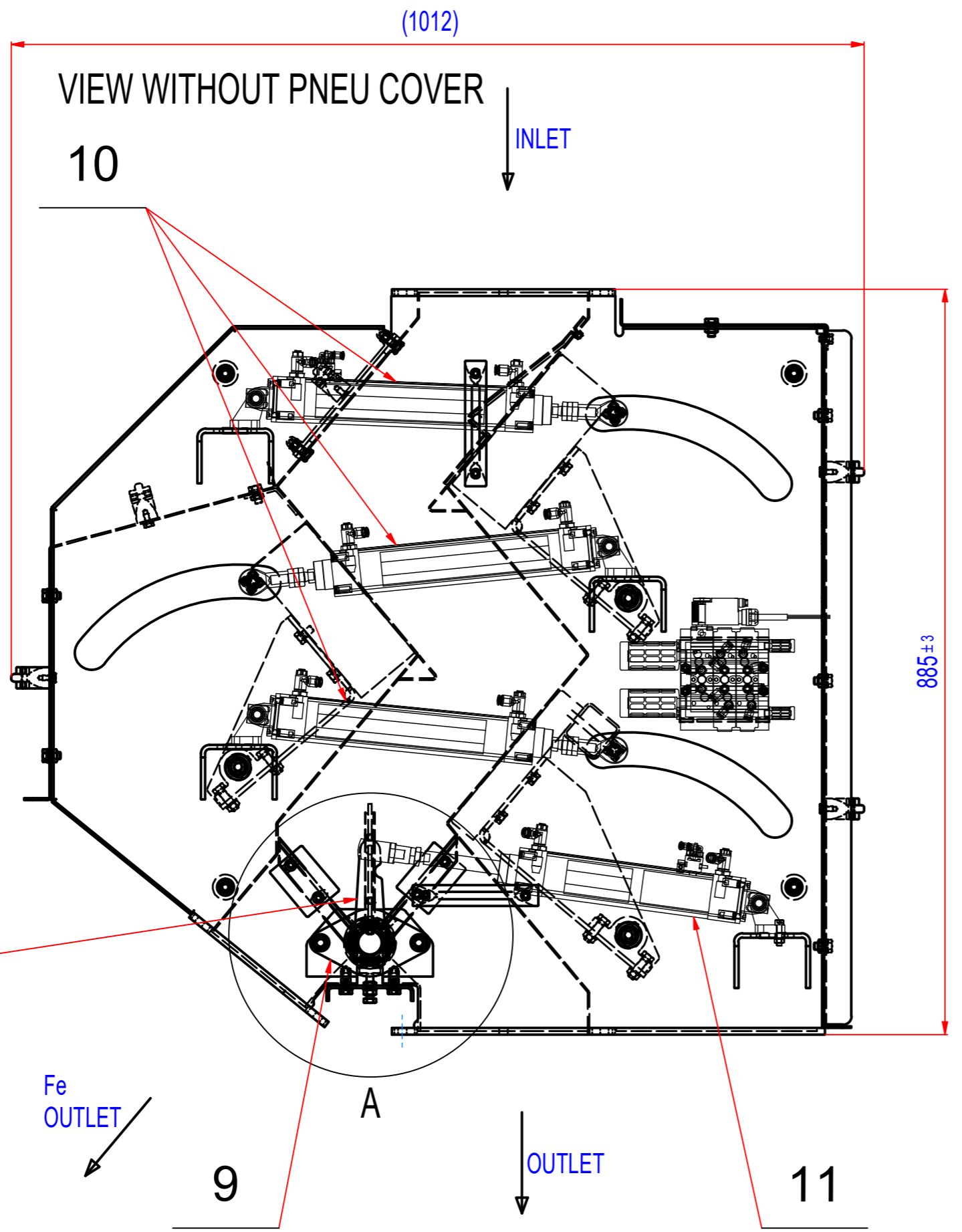
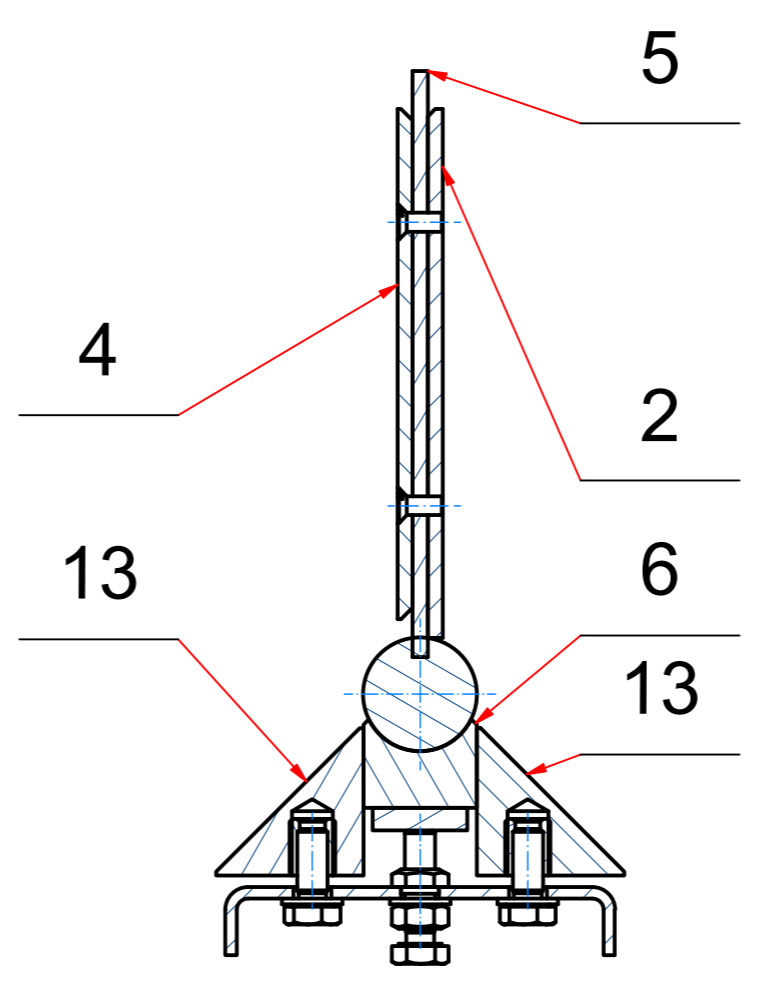
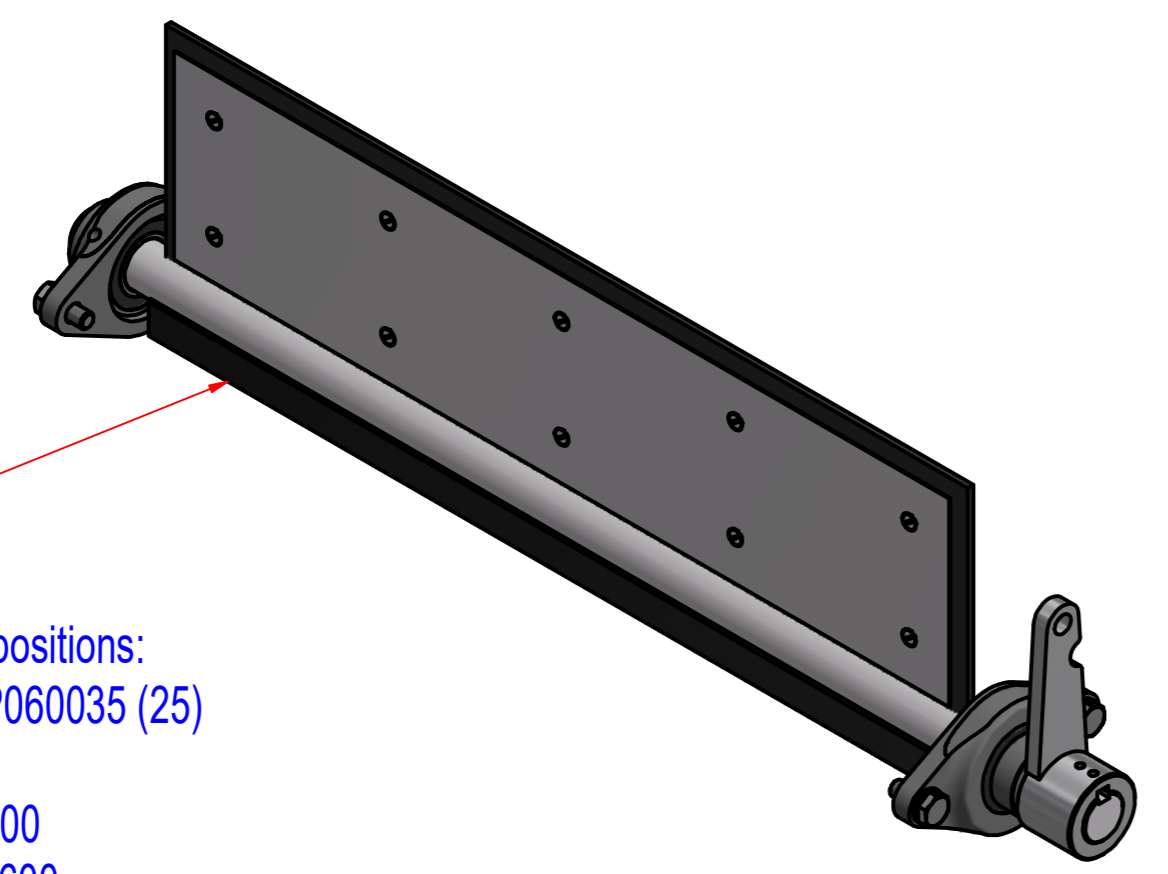


REV	DATE	BY	DESCRIPTION
-	14.11.2019	EN	Ref.: SRKP080035_SP
A	04.08.2021	EN	Divided wedge plate, pos. 13 added (also to valve assembly)
B	19.10.2021	EN	Valve control lever added to the valve assembly



A(1:2)



- Valve assembly includes positions:
- 2 - Valve weld assy SRKP060035 (25)
 - 3 - Valve control lever
 - 4 - Valve clamping plate 600
 - 5 - Valve flat rubber plate 600
 - 6 - Valve axle support 600
 - 9 - Bearings assembly PCFT 30
 - 13 - Valve side slat 600

POZ.	Č. SOUČÁSTI	POPIS	MATERIÁL	HMOT.	MN.
13	622_040201	Valve side slat 600		0,7	2
12	A664_050200	Valve assembly			1
11	83_1461995_160	Cylinder DSBC-40-160-PPSA-N3EX4		1	1
10	83_1461995_200	Cylinder DSBC-40-200-PPSA-N3EX4		1	3
9	15_4100206	Bearings assembly PCFT 30		0,9	2
8	15_9000067	Bearings assembly KSTM-20		0	6
7	996_020001	Axle for moving magnet 0600	AISI304	0,4	3
6	622_040003	Valve axle support 0600		0,5	1
5	622_040002	Valve flat rubber plate		0,3	1
4	622_040001_B	Valve clamping plate 600	AISI304	2,5	1
3	622_040400_B	Valve control lever		0,6	1
2	622_040100_B	Valve weld assy SRKP060035 (25)		6,9	1
1	A664_000100	Wedge plate for SRKP060035 (25) - divided		4,5	1

Sheet: A2 Drawn: EN Date: 19.10.2021 Predecessor: SRKP080035w Quick search:	Extra info: © All rights reserved. Reproduction is not permitted without written permission of GOUDSMIT Magnetic Systems BV	General tolerance: ISO 2768 - cL Drawn according to: ISO268; ISO1101; ISO2553 Status: Customer reference number: Product key: SEK-P-0600-3-FN-DC-Ex Part number: SRKP060035_SP Rev: B
Description: Spare parts for cascade magnet pneumatic, 3 steps, W600		