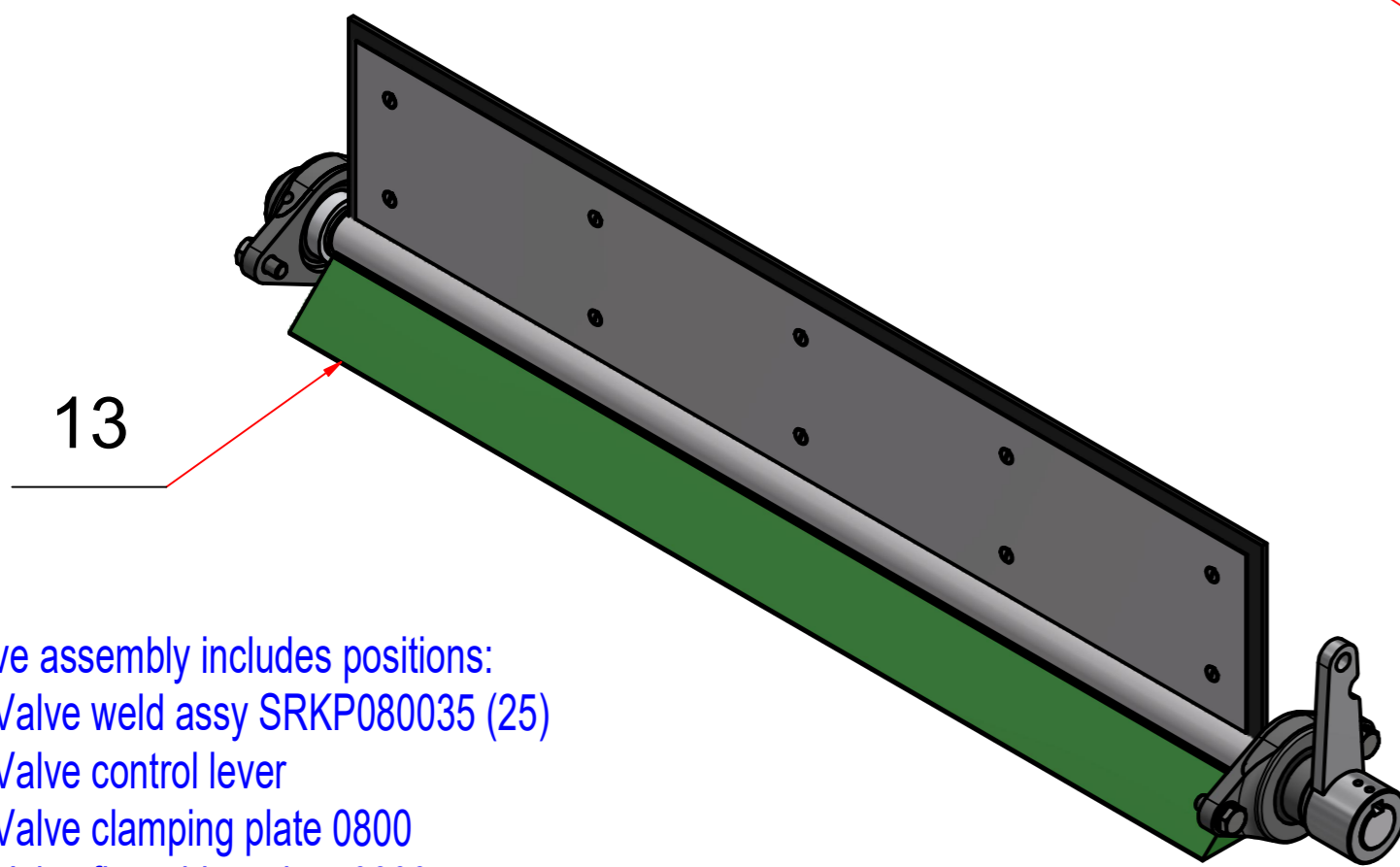
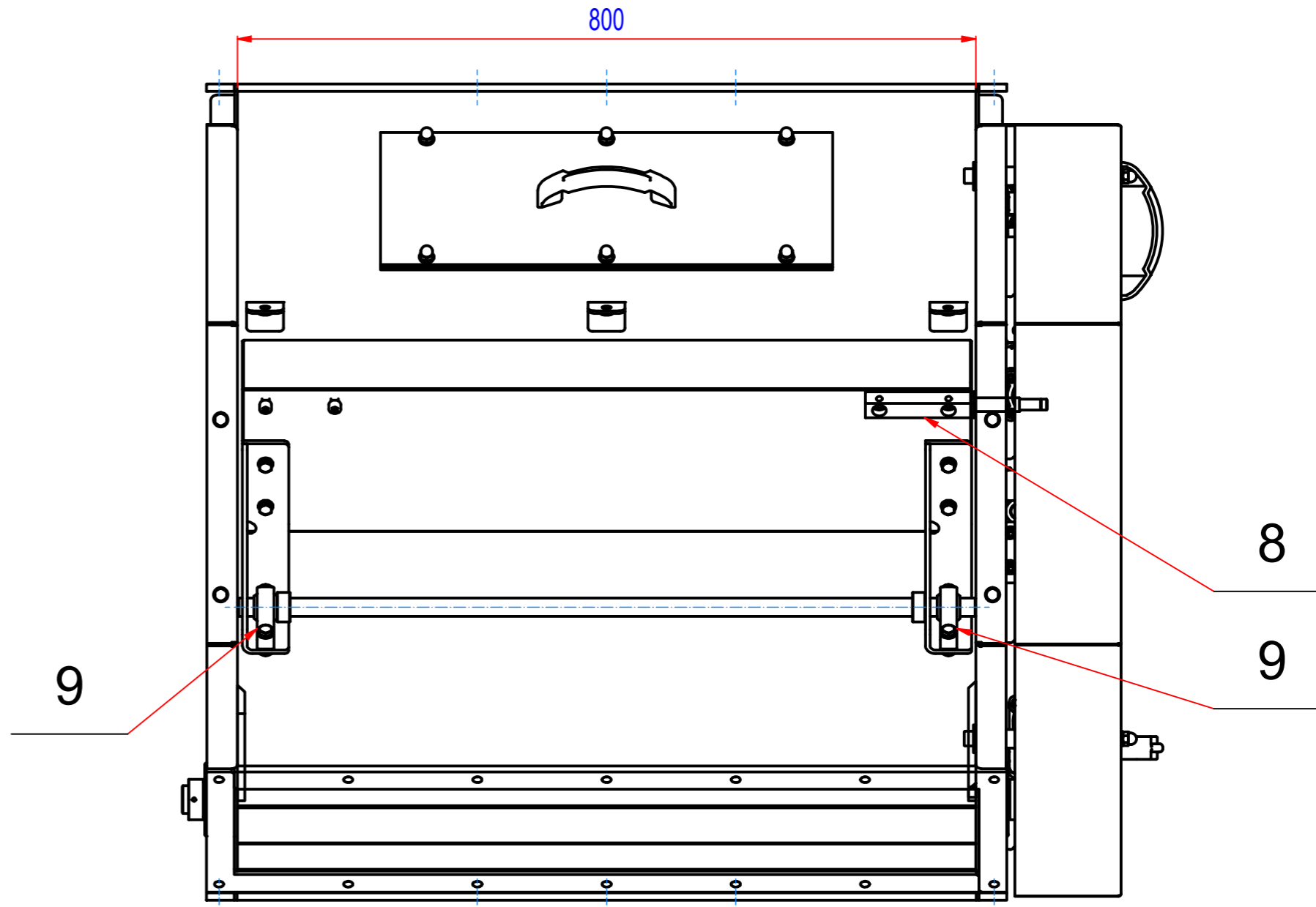
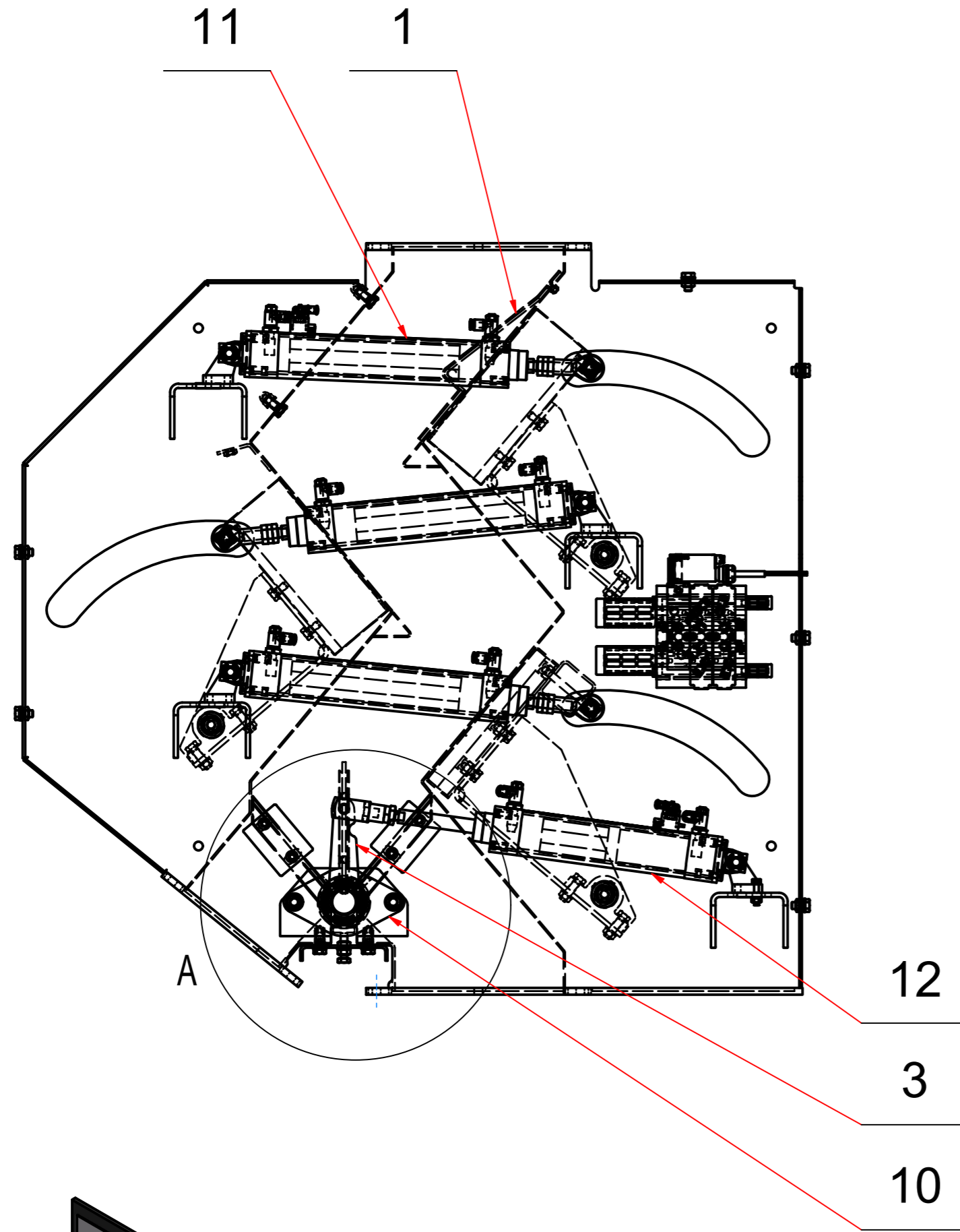
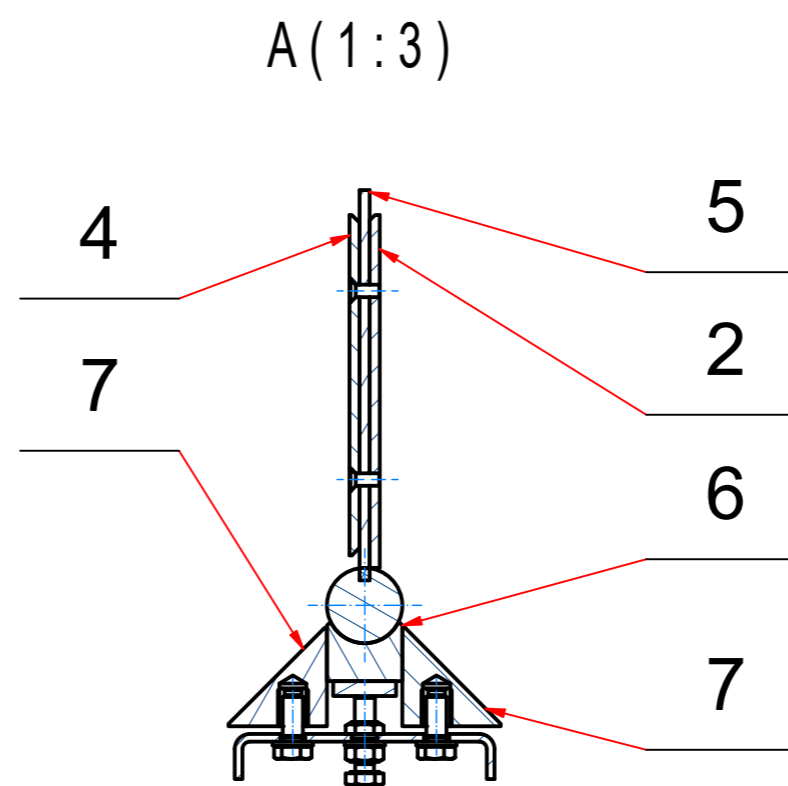


REV	DATE	BY	DESCRIPTION
-	29.10.2018	EN	NEW VALUT-REF: 461_000000_J
-	16.06.2020	EN	Valve assembly added
A	07.10.2021	EN	Divided wedge plate



- Valve assembly includes positions:
- 2 - Valve weld assy SRKP080035 (25)
 - 3 - Valve control lever
 - 4 - Valve clamping plate 0800
 - 5 - Valve flat rubber plate 0800
 - 6 - Valve axle support 0800
 - 7 - Valve side slat
 - 9 - Bearings assembly PCFT 30



POZ.	Č. SOUČÁSTI	POPIS	MATERIÁL	HMOT.	MN.
13	A128_050200	Valve assembly			1
12	83_1461995_160	Cylinder DSBC-40-160-PPSA-N3EX4		1	1
11	83_1461995_200	Cylinder DSBC-40-200-PPSA-N3EX4		1	3
10	15_4100206	Bearings assembly PCFT 30	Ocel	0,9	2
9	15_9000067	Bearings assembly KSTM-20		0	6
8	996_020001	Axle for moving magnet	AISI304	0,4	3
7	461_040301	Valve side slat	PET	1	2
6	461_040004	Valve axle support 0800	PET	0,7	1
5	461_040003	Valve flat rubber plate 0800	PUR	0,5	1
4	A128_050002	Valve clamping plate 0800	AISI304	3,3	1
3	622_040400_B	Valve control lever		0,6	1
2	A128_050100	Valve weld assy SRKP080035 (25)		8,9	1
1	A128_000100	Wedge plate for SRKP080035 (25) - divided		6	1

Sheet: A2 Drawn: EN Date: 7.10.2021 Predecessor: SRKP080035w Quick search:	Extra info: © All rights reserved. Reproduction is not permitted without written permission of GOUDSMIT Magnetic Systems BV	General tolerance: ISO 2768 - cL Drawn according: ISO268; ISO1101; ISO2553 Status: Customer reference number: Product key: SEK-P-0800-3-FN-DC-Ex Part number: SRKP080035 Rev: A
Description: Spare parts for cascade magnet pneu, 3 steps, W800		