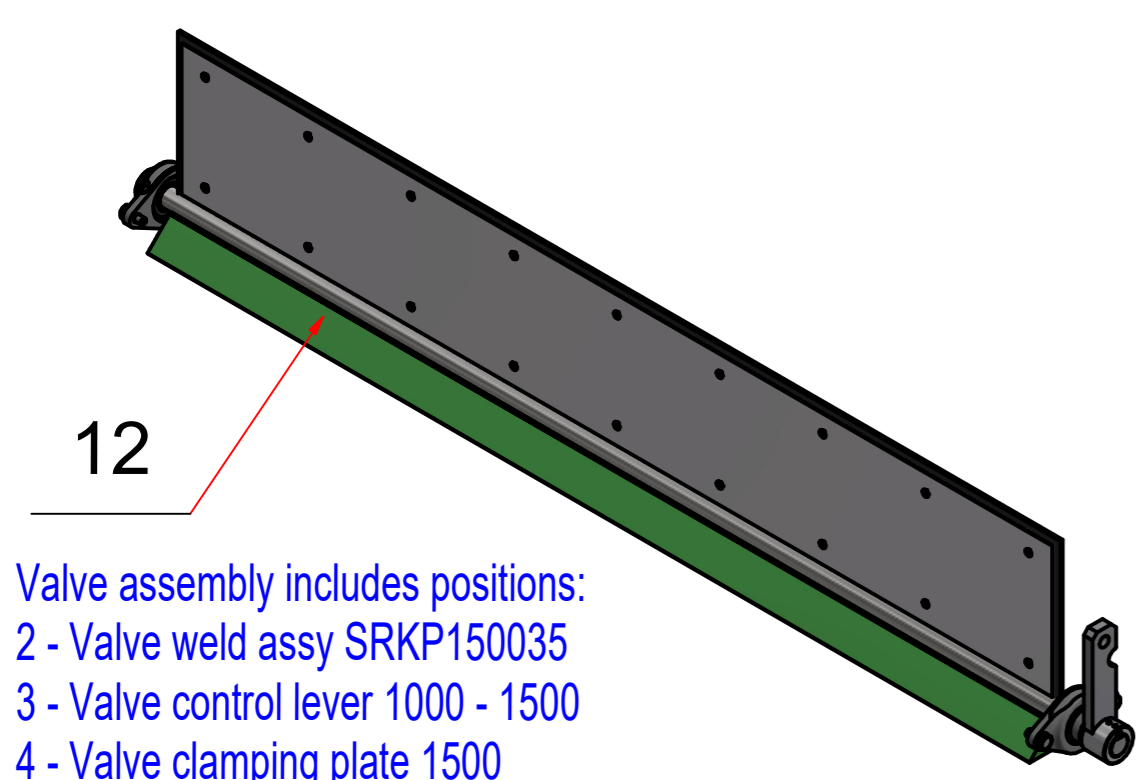
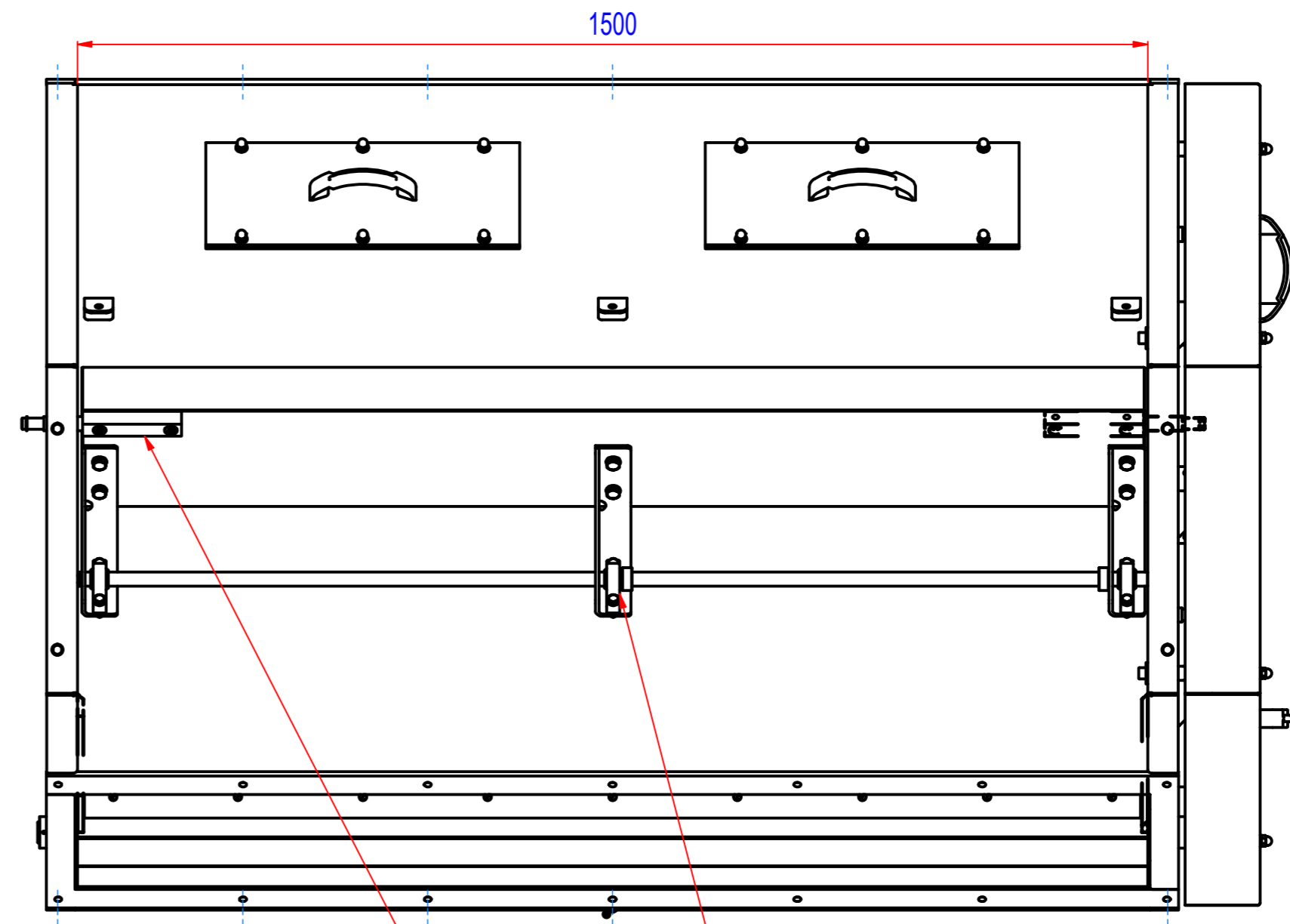
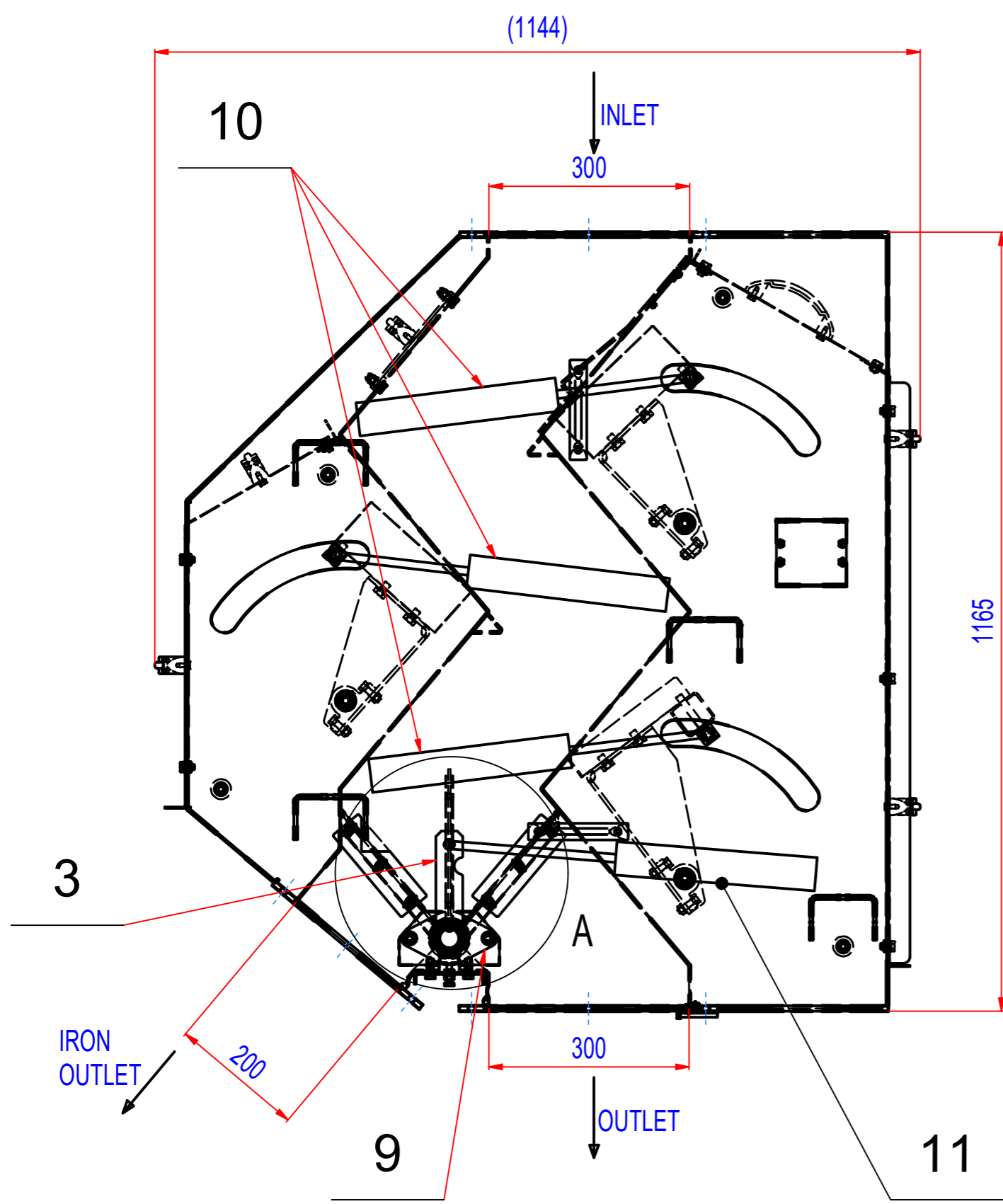
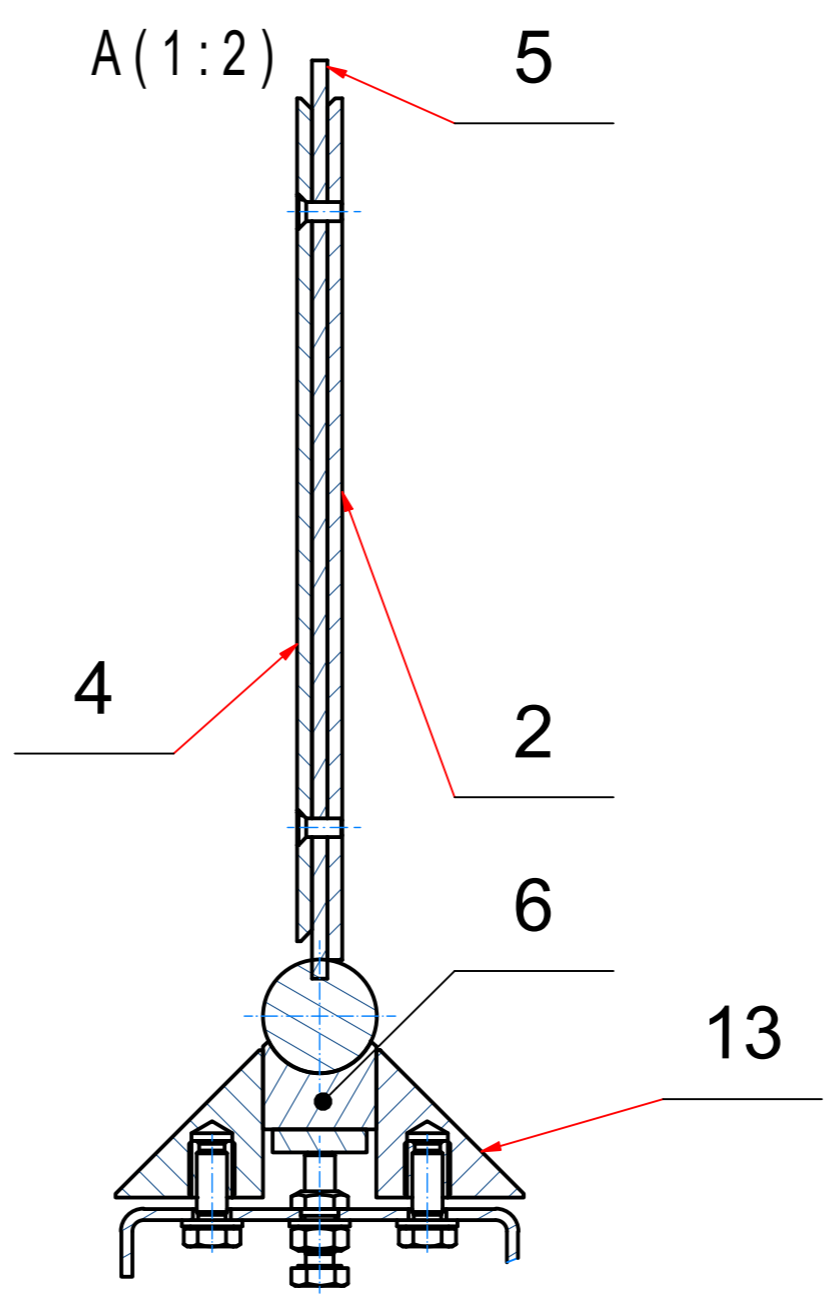


REV	DATE	BY	DESCRIPTION
-	29.09.2019	EN	NEW VALUT-REF: SRKP150035w_SP, rev. A, updated
-	13.03.2020	EN	Valve assembly added
A	16.06.2020	EN	Valve side slat added to valve assembly
B	22.09.2021	EN	Divided wear plate, valve control lever added to valve assembly, valve weld assy revised



- Valve assembly includes positions:
- 2 - Valve weld assy SRKP150035
 - 3 - Valve control lever 1000 - 1500
 - 4 - Valve clamping plate 1500
 - 5 - Valve flat rubber plate 1500
 - 6 - Valve axle support 1500
 - 9 - Bearings assembly PCFT 30
 - 13 - Valve side slat



POZ.	Č. SOUČÁSTI	POPIS	MATERIÁL	HMOT.	MN.
13	A042_050005	Valve side slat 1500		1,8	2
12	A042_050200	Valve assembly		35	1
11	1463770	Cylinder FESTO DSBC-50-200-PPSA-N3EX4		1,7	1
10	1463475	Cylinder FESTO DSBC-63-200-PPSA-N3EX4		2,2	3
9	15_4100206	Bearings assembly PCFT 30		0,9	2
8	15_9000067	Bearings assembly KSTM-20		0	9
7	D40_020001	Axle for moving magnet 1000-1500		0,8	3
6	429_040003	Valve axle support 1500		1,2	1
5	429_040002	Valve flat rubber plate 1500		1,4	1
4	429_040001_B	Valve clamping plate 1500	AISI304	10,5	1
3	A005_050300	Valve control lever 1000-1500		0,6	1
2	429_040100_B	Valve weld assy SRKP150035		19,6	1
1	A042_060100	Wedge plate for SRKP150035 (25) - divided		14,3	1

Sheet: A2	Extra info: SRKP150035w	General tolerance: ISO 2768 - cL
Drawn: EN	Weight (kg): 596,7	Drawn according: ISO268; ISO1101; ISO2553
Date: 22.9.2021		Status:
Predecessor: SRKP150035w		Customer reference number:
Quick search: XSKP1500	© All rights reserved. Reproduction is not permitted without written permission of GOUDSMIT Magnetic Systems BV	Product key: SEK-P-1500-3-FN-DC-Ex
Description: Spare parts for cascade magnet pneumatic, 3 steps, W1500	Part number: SRKP150035_SP	Rev: B